

ANTHEM CORPORATE

3715 W Anthem Way, Anthem, AZ


TRANSWESTERN
REAL ESTATE
SERVICES



Office and Medical Space Available

PLEASE CONTACT YOUR EXCLUSIVE ADVISORS FOR MORE INFORMATION

KATHLEEN MORGAN | Managing Director
602.809.1048
kathleen.morgan@transwestern.com

KEVIN SMIGIEL | Vice President
602.550.9295
kevin.smigiel@transwestern.com

VINCE FEMIANO | Managing Director
602.791.3310
vince.femiano@transwestern.com

ANDREW OLIVET | Advisor
602.370.2685
andrew.olivet@transwestern.com

Anthem Corporate

3715 W Anthem Way, Anthem, AZ 85086



\$32.00

Full Service With Base
Year Operating Expenses



64,473 SF

Building Size



3%

Annual Increases



4.40:1,000/SF

Parking Ratio



2008

Year Built



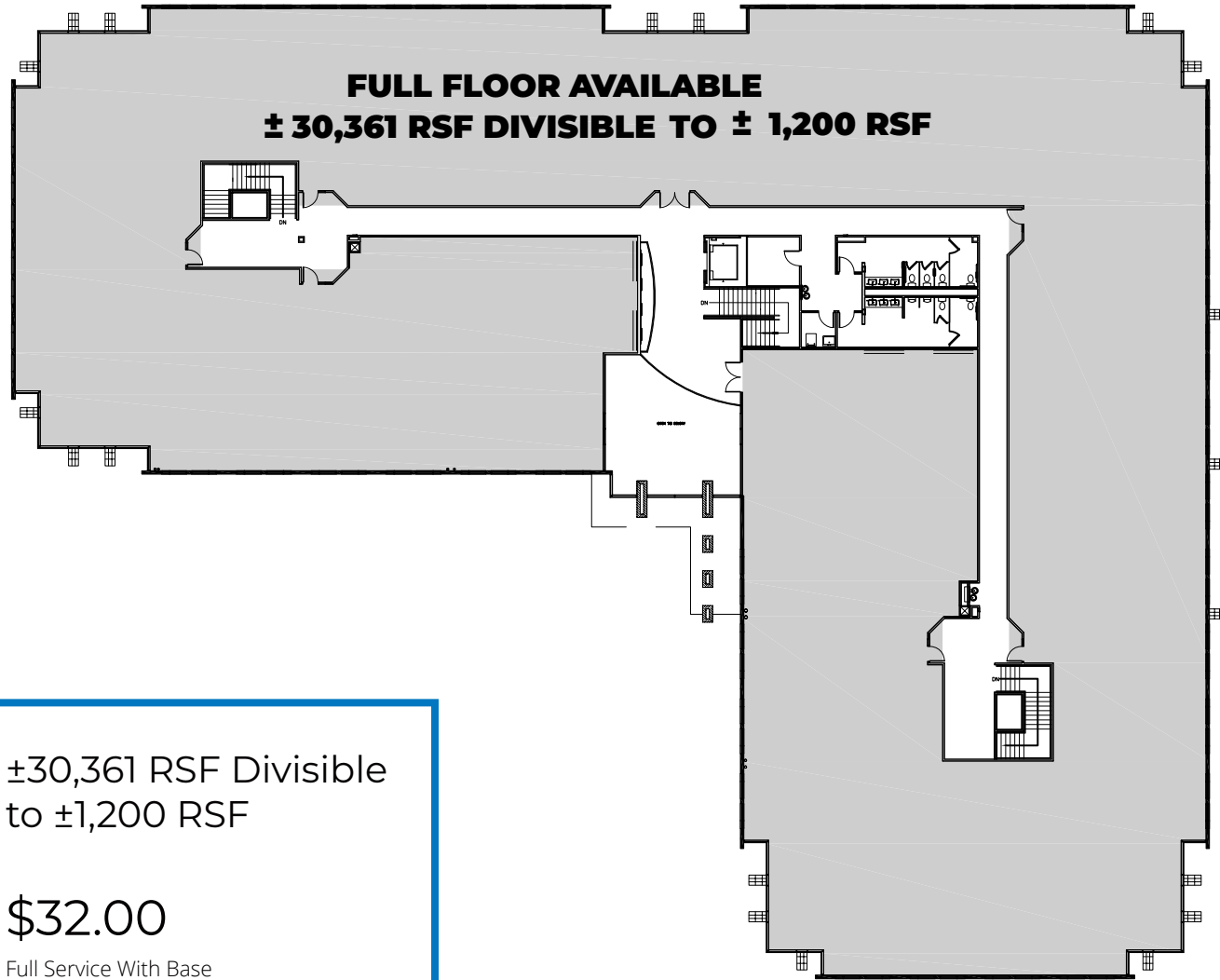
TI'S

Available

2ND FLOOR ±30,361 RSF DIVISIBLE TO 1,200 RSF

Availability

2nd Floor
Plate
Full Floor
User



±30,361 RSF Divisible
to ±1,200 RSF



\$32.00

Full Service With Base
Year Operating Expenses

PLEASE CONTACT YOUR EXCLUSIVE ADVISORS FOR MORE INFORMATION



KATHLEEN MORGAN
602.809.1048
kathleen.morgan@transwestern.com

KEVIN SMIGIEL
602.550.9295
kevin.smigiel@transwestern.com

VINCE FEMIANO
602.791.3310
vince.femiano@transwestern.com

ANDREW OLIVET
602.370.2685
andrew.olivet@transwestern.com

Location



PLEASE CONTACT YOUR EXCLUSIVE ADVISORS FOR MORE INFORMATION

KATHLEEN MORGAN | Managing Director
602.809.1048
kathleen.morgan@transwestern.com

KEVIN SMIGIEL | Vice President
602.550.9295
kevin.smigiel@transwestern.com

VINCE FEMIANO | Managing Director
602.791.3310
vince.femiano@transwestern.com

ANDREW OLIVET | Advisor
602.370.2685
andrew.olivet@transwestern.com