

OFFICE SPACE FOR LEASE

9127 JAMAICA STREET
ENGLEWOOD, COLORADO 80112



PROPERTY FEATURES

AVAILABLE SF	Suite 100	±25,200 SF
	Suite 250	±8,332 SF
	Suite 300	±11,696 SF
	TOTAL	±45,228 SF

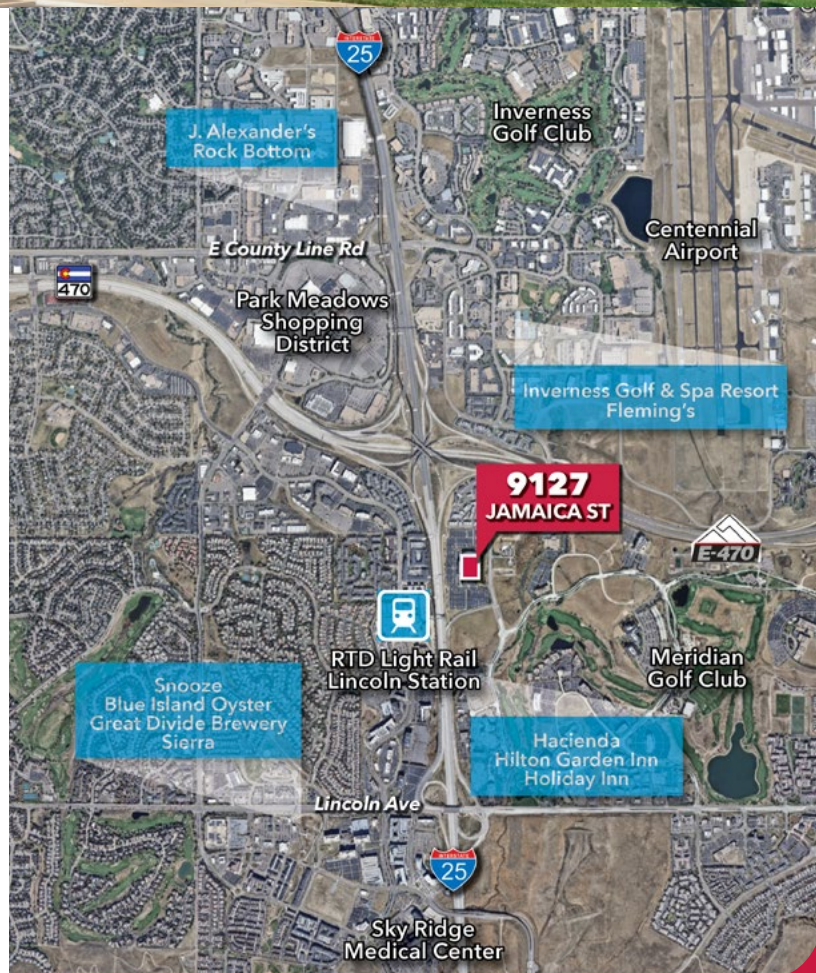
COMMENTS

- Walking distance to Lincoln Station Light Rail
- Close proximity to Park Meadows Mall, Meridian and Inverness Golf Clubs, & Centennial Regional Airport
- Located at the confluence of I-25 and E-470
- 4 : 1,000 Surface parking
- 10' Ceilings throughout
- Large efficient floor plate
- LEED Silver: Energy Star Building
- Electrical and HVAC capacity to support today's tenant demand
- State-of-the-art telephone and data connectivity

LEASE RATE \$26.00/SF Full Service Gross

JR BITZER

Lee & Associates
303.501.8778
jrbitzer@lee-associates.com

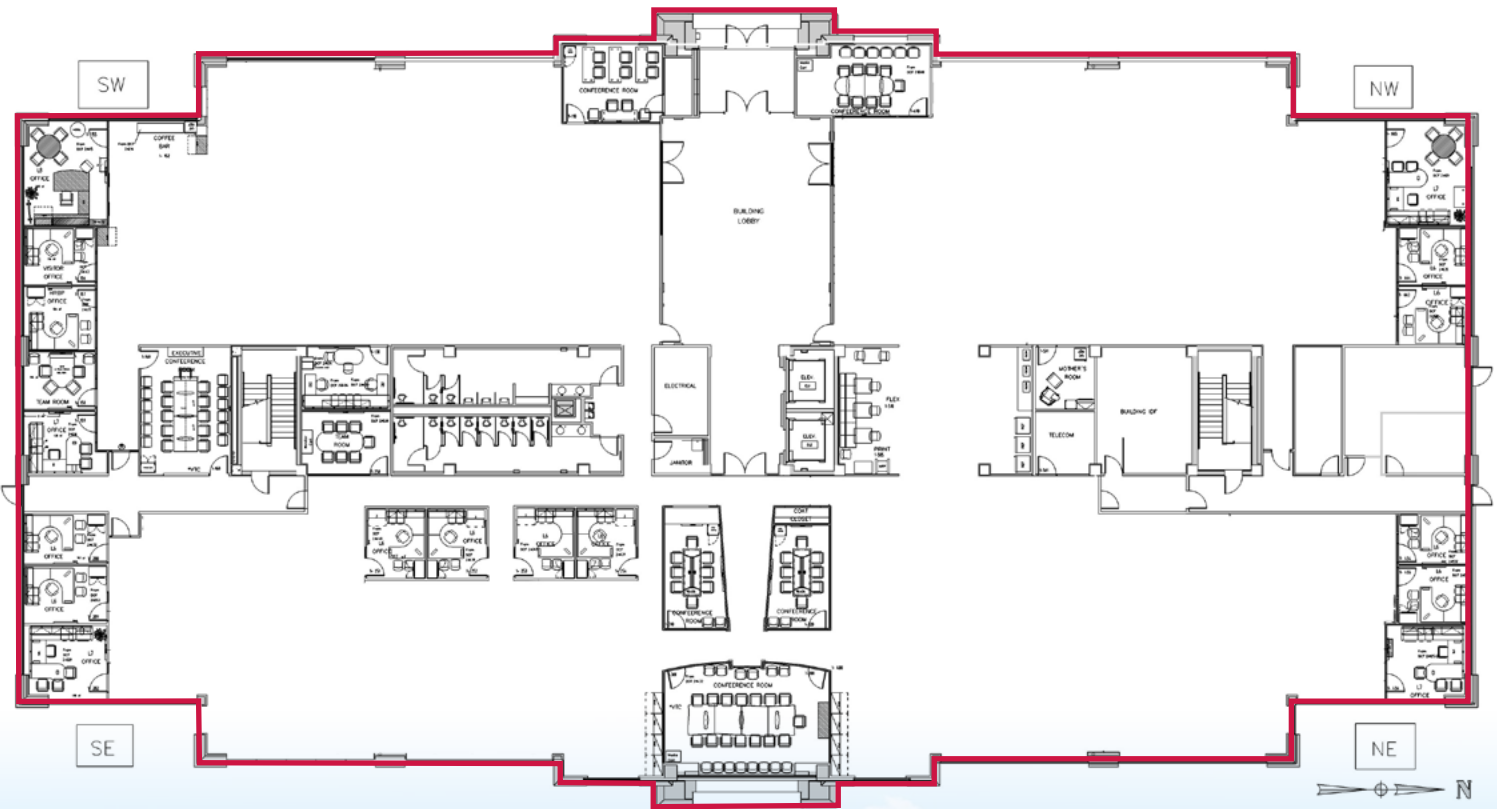


OFFICE SPACE FOR LEASE

9127 JAMAICA STREET
ENGLEWOOD, COLORADO 80112



FIRST FLOOR: 25,200 SF AVAILABLE



**Hypothetical layouts*



JR BITZER

Lee & Associates

303.501.8778

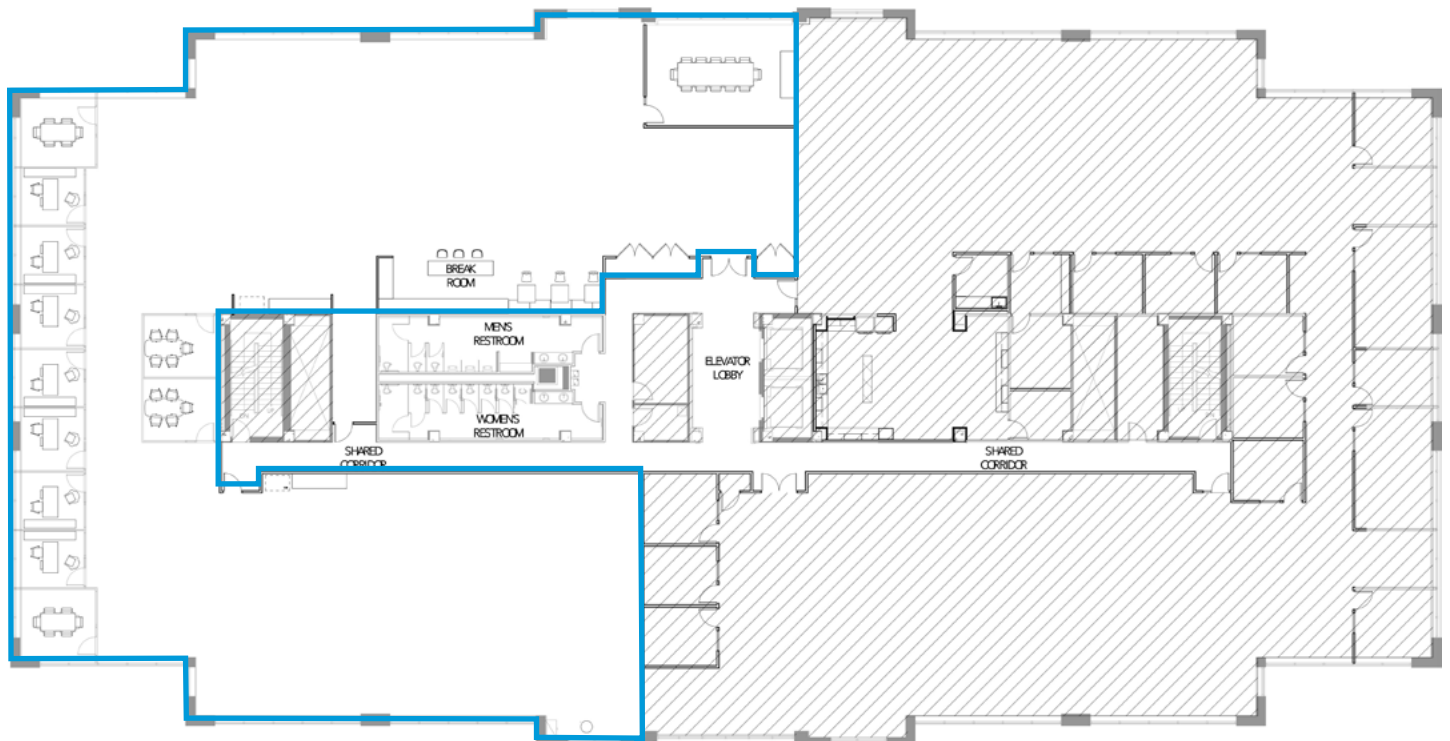
jrbitzer@lee-associates.com

All information furnished regarding property for sale, rental or financing is from sources deemed reliable, but no warranty or representation is made to the accuracy thereof and same is submitted to errors, omissions, change of price, rental or other conditions prior to sale, lease or financing or withdrawal without notice. No liability of any kind is to be imposed on the broker herein.

2ND FLOOR: 8,332 SF AVAILABLE



THIRD FLOOR: 11,696 SF AVAILABLE



OFFICE SPACE FOR LEASE

9127 JAMAICA STREET ENGLEWOOD, COLORADO 80112

LEE & ASSOCIATES
COMMERCIAL REAL ESTATE SERVICES



JR BITZER

Lee & Associates

303.501.8778

jrbitzer@lee-associates.com

2000 S Colorado Boulevard
Tower II, Suite 380
Denver, CO 80222
303.296.8500
lee-associates.com/denver