

LAND FOR SALE

604 LOVETT AVE. CLEVELAND, TX 77327

±0.84 Acres



Mainik Avenue

W. Southline Street



PROPERTY DEMOGRAPHICS

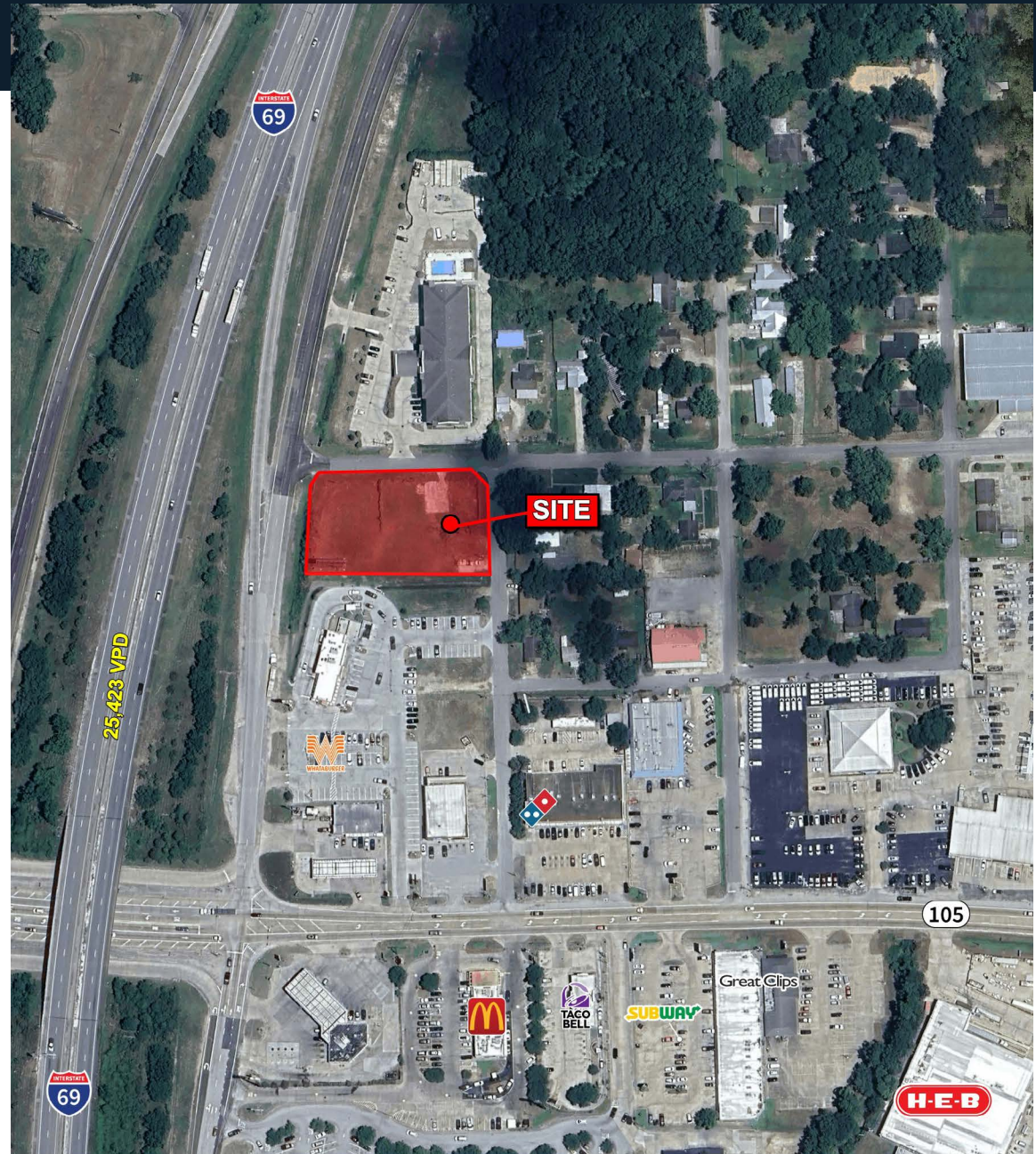
±0.84 Acres

604 Lovett Ave. Cleveland, TX 77327

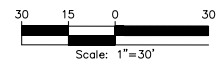
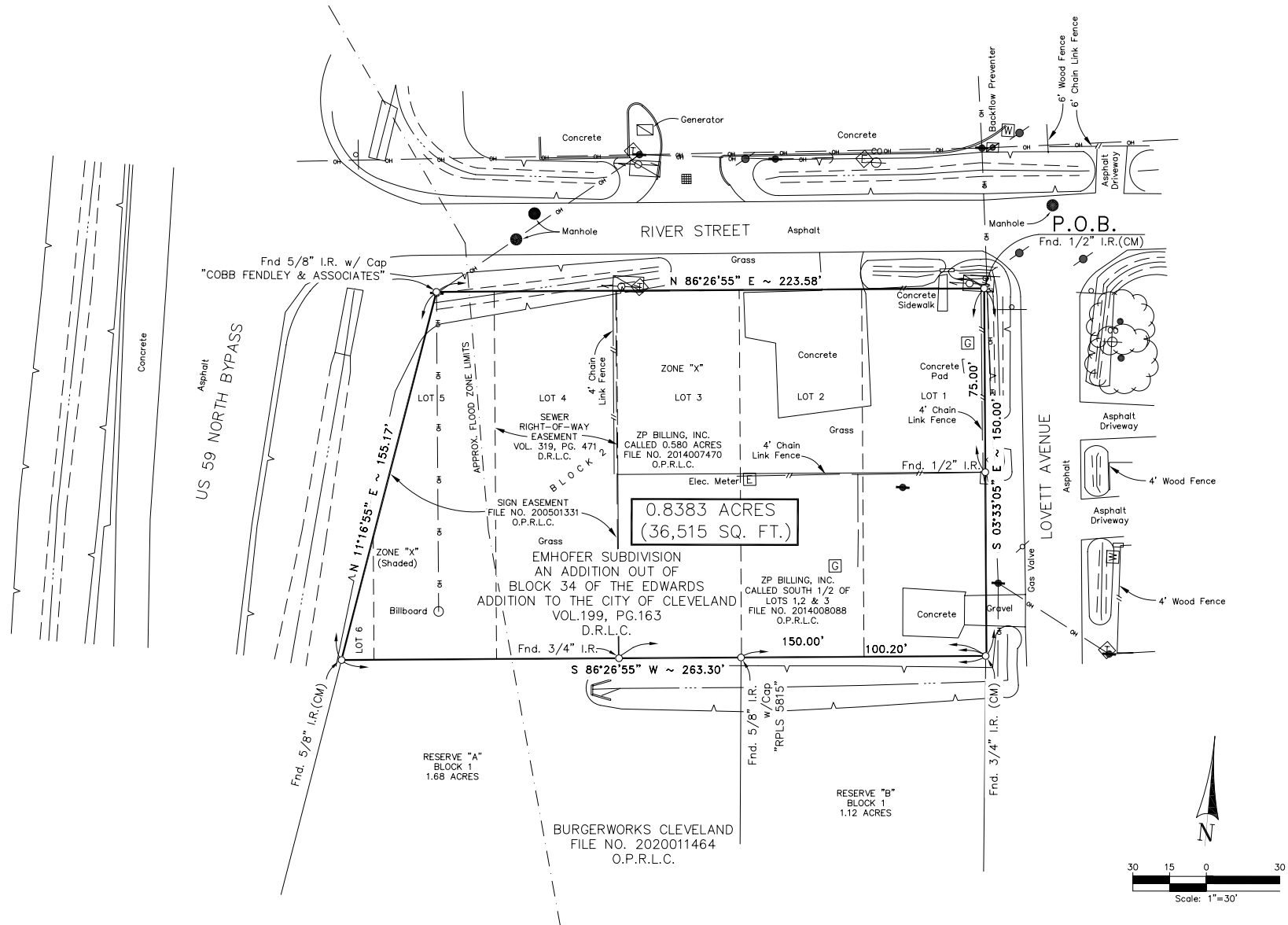
	1 MILE	3 MILES	5 MILES
2025 TOTAL POPULATION	1,891	11,211	19,462
2025 MEDIAN AGE	37.9	36.3	36.0
2025 AVERAGE HOUSEHOLD INCOME	\$108,807	\$79,387	\$80,437
2025 AVERAGE HOME VALUE	\$258,814	\$189,530	\$222,804



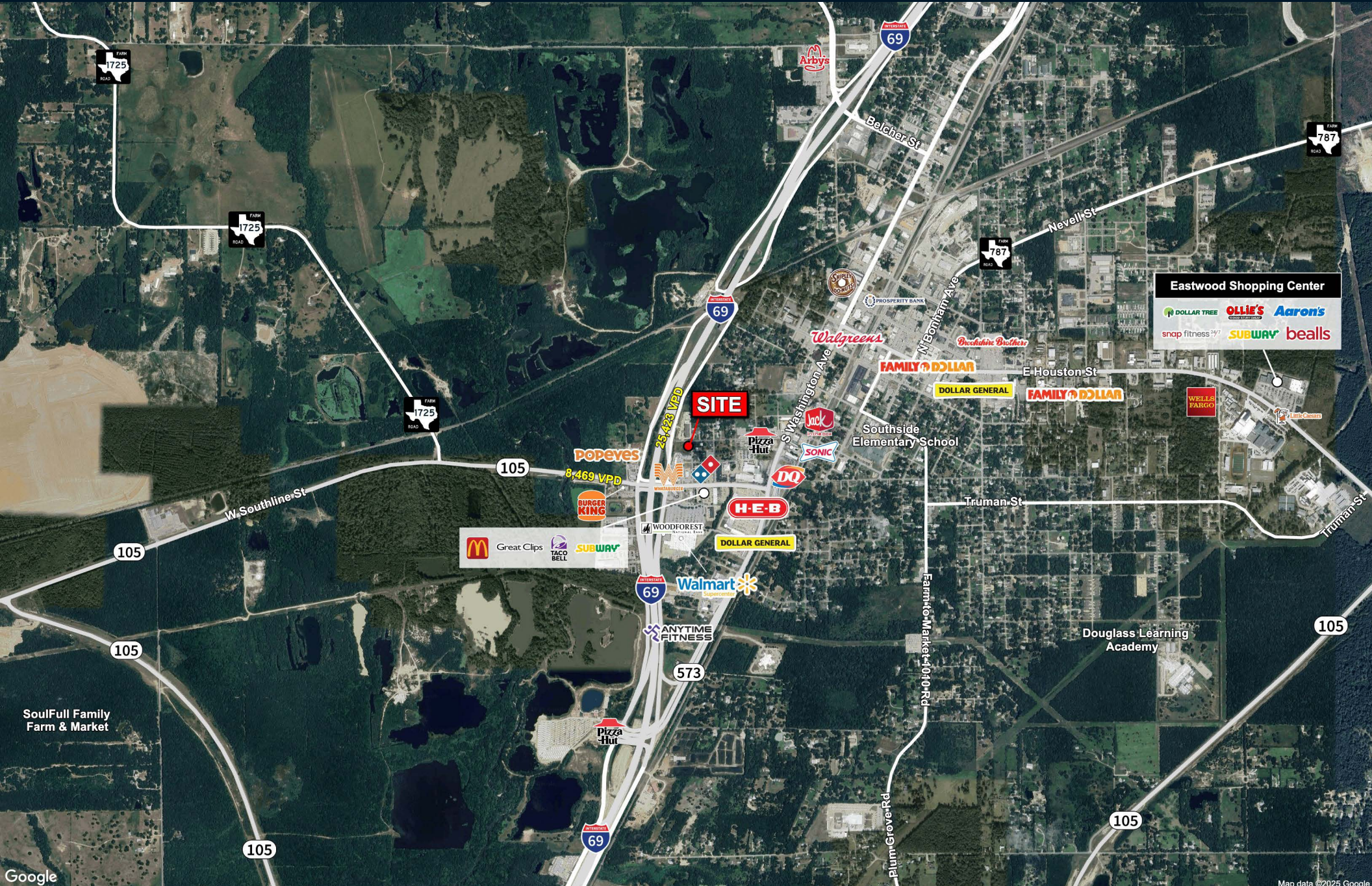
Call broker for pricing



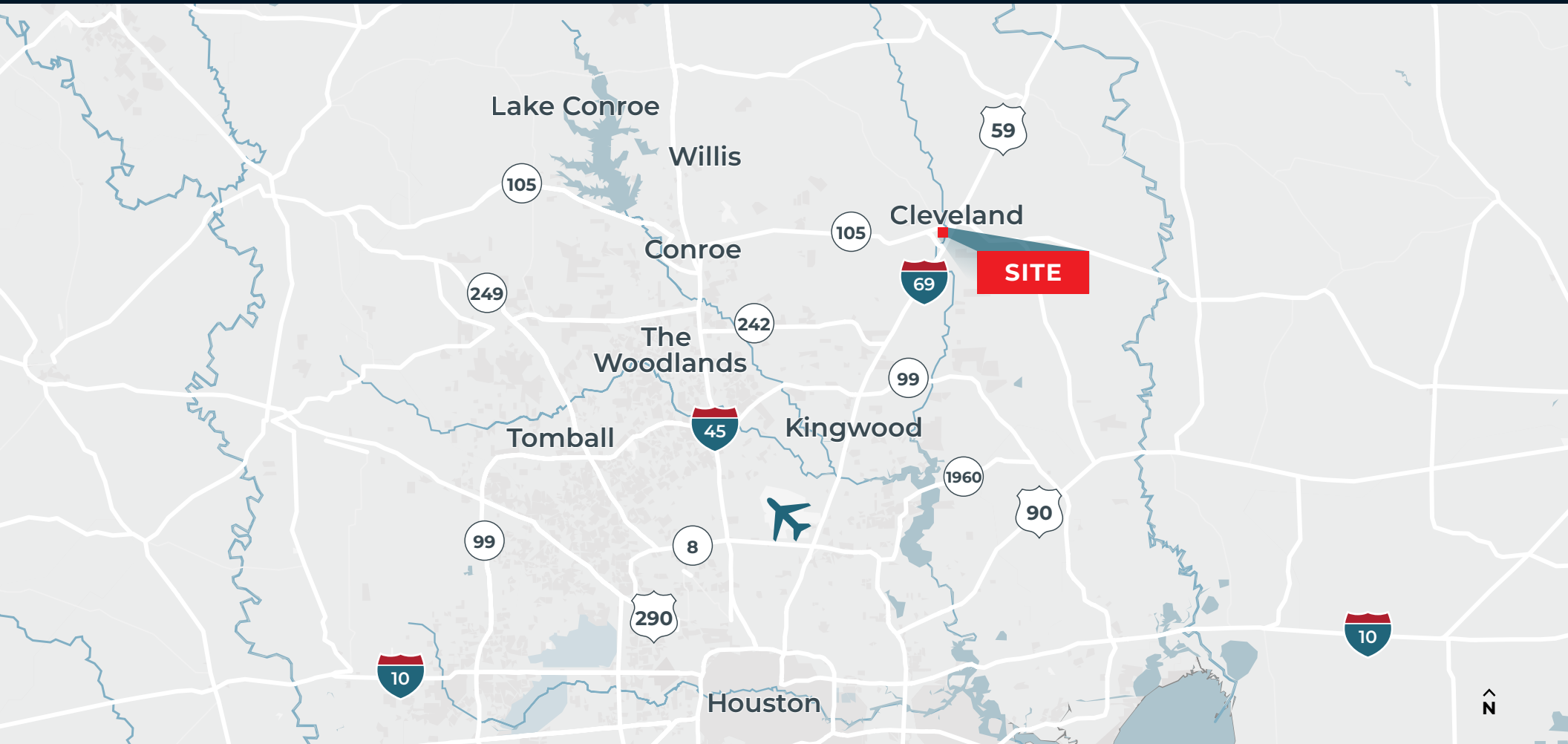
SURVEY



TRADE OVERVIEW AERIAL



CONTACT US



MARK RAINES

Executive Vice President - Managing Director

+1 713 888 4037

mark.raines@jll.com



Although information has been obtained from sources deemed reliable, JLL does not make any guarantees, warranties or representations, express or implied, as to the completeness or accuracy as to the information contained herein. Any projections, opinions, assumptions or estimates used are for example only. There may be differences between projected and actual results, and those differences may be material. JLL does not accept any liability for any loss or damage suffered by any party resulting from reliance on this information. If the recipient of this information has signed a confidentiality agreement with JLL regarding this matter, this information is subject to the terms of that agreement. ©2025 Jones Lang LaSalle Brokerage, Inc. All rights reserved.