

28 MARCY AVENUE

Between Hope Street & Metropolitan Avenue



2nd Floor - Rear View



WILLIAMSBURG OFFICE SPACE

500 SF UP TO 1,450 SF

Available Space

2nd Floor: 500-1,450 sf

Possession

Immediate

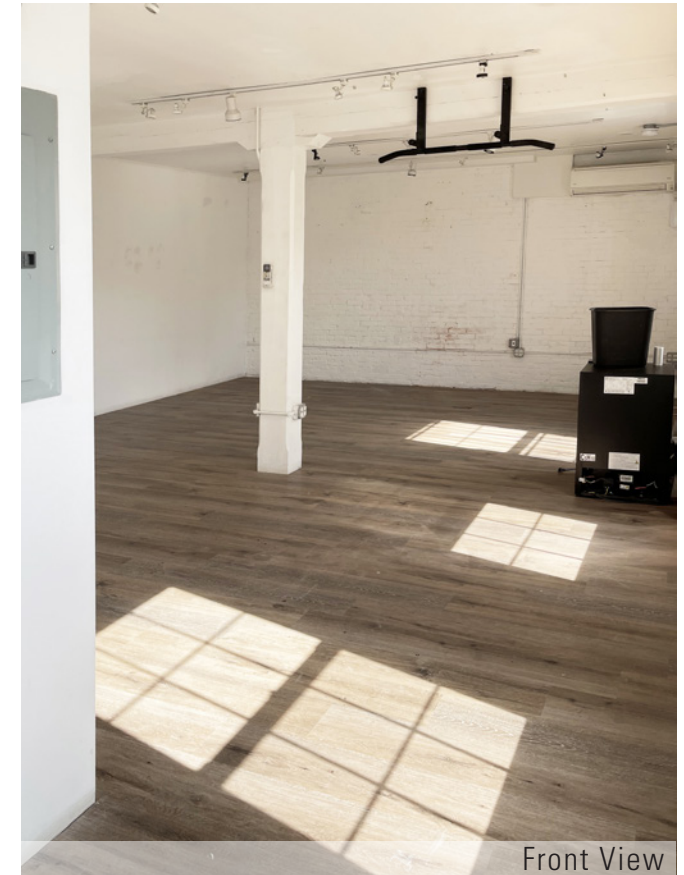
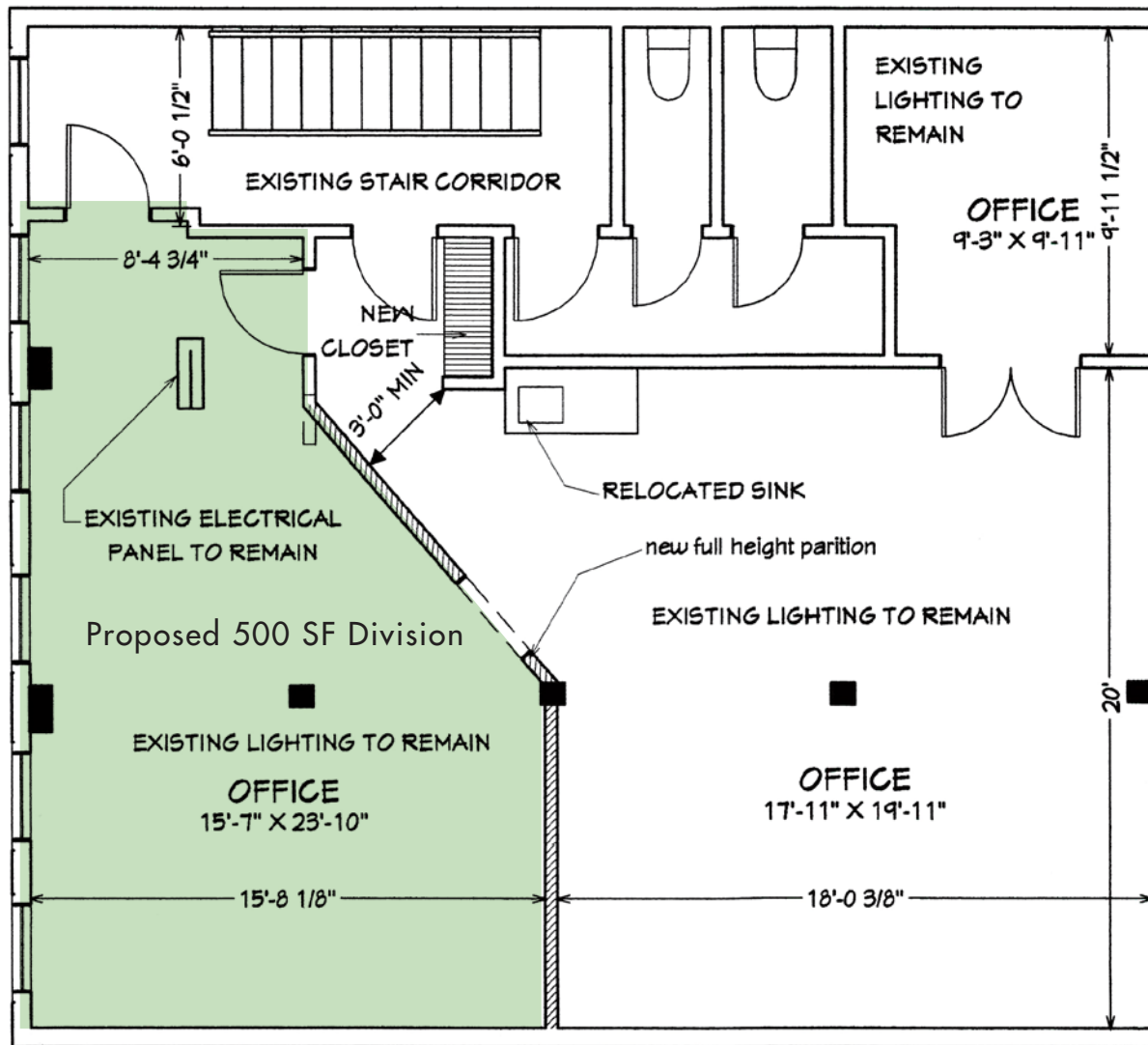
Rent: Upon request

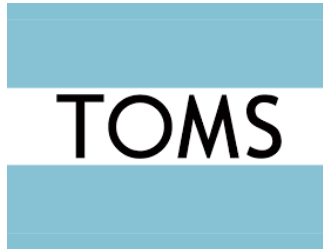
Comments

- Walk-up building in burgeoning neighborhood with rapidly growing population
- Centrally located between the Metropolitan Avenue/Lorimer Street **L** **G** station; and vicinity of **J** **M** **Z** subways
- Neighbors include: Whole Foods, Apple, Sweetgreen, Emmy Squared, Knotting Factory to name a few



2nd Floor - Plan





14-Story, 200,000 SF mixed-use development under construction
188-key Hotel plus 5-unit Residential condo units / Retail and Restaurant



St. Anselm



Supreme

by CHLOE.

sweetgreen®

EMMY SQUARED



For further information and/or inspection contact exclusive broker:

Ben Waller

Partner

212.400.9515

bwaller@absre.com

Brazos Ebner

Associate

212.400.6088

brazos@absre.com

ABS Partners Real Estate • 200 Park Avenue South, 10th Floor, New York, NY 10003 • 212.400.6060 • www.absre.com