



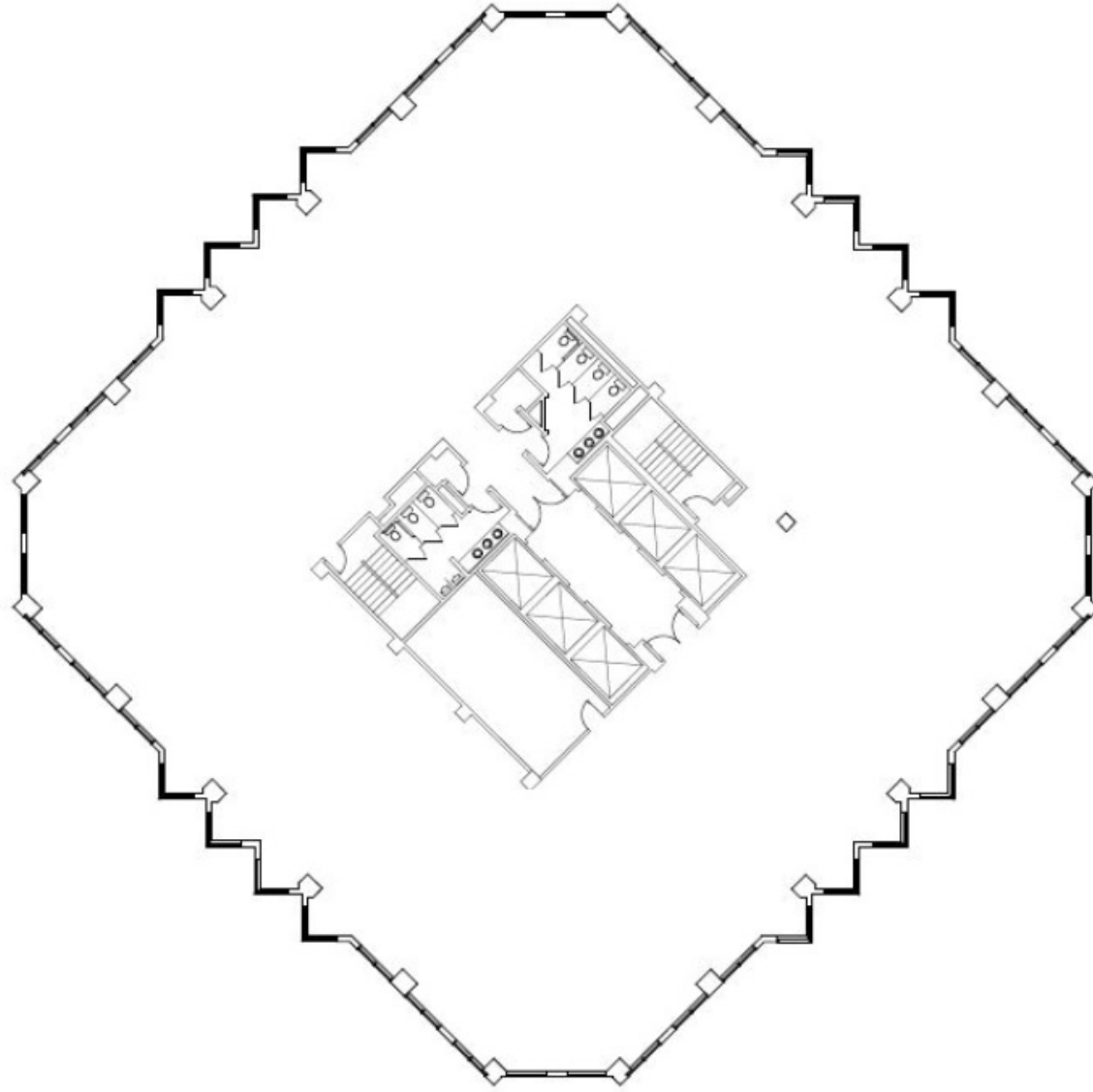
**3800**

Howard Hughes Parkway

## Suite 1600

±16,038 RSF

±14,000 USF



**CUSHMAN &  
WAKEFIELD**

Charles W. Van Geel  
Director  
+1 702 581 1963  
Charles.VanGeel@cushwake.com  
LIC. #0044616

**HUGHES  
CENTER**