

BELMONT SHORE / 2ND STREET

INDIVIDUAL OFFICE FOR SUBLEASE

5305
E 2ND STREET
LONG BEACH | CA



NEWMARK

STEVE KOLSKY
Executive Vice President
t 310-201-2061
steve.kolsky@nmrk.com
CA RE License #00997737

CLAUDIA LARA
t 562-439-3050
claudia@kolskyrealty.com

5305

E 2ND STREET

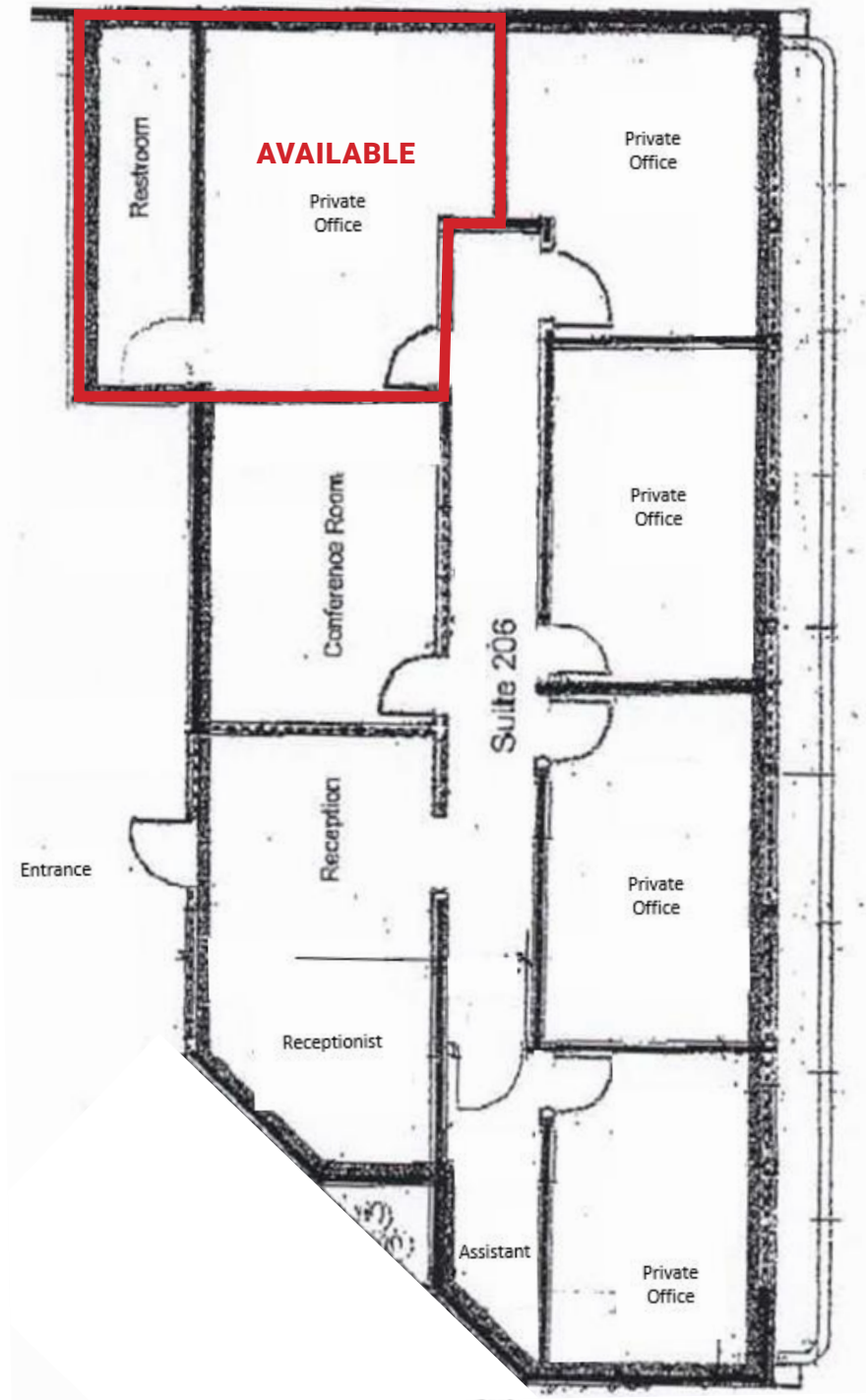
LONG BEACH | CA

SPACE HIGHLIGHTS:

- Large Private Office for Sublease.
- \$700/mo. (Utilities included).
- Located in the center of Second Street in Belmont Shore.
- Walking distance to 250 boutiques, specialty shops, eateries and the water.



FLOOR PLAN



NEIGHBORING AMENITIES

5305 E. 2nd Street



WafD Bank

roe

@Sushi

FOODOLOGIE

le macaron
french pastries

CANDIFIED
SHOP-CREATE-CELEBRATE

SOUTH-NICK'S
paninis • kitch • bar

GEORGE'S GREEK CAFE

goodies



TILLYS
CLOTHING • SHOES • ACCESSORIES

Natura Bows
SUBWAY

THE WINE BEACH
DOMENICO'S RESTAURANT
SUSHI FIRE
RILEY'S ON 2ND

BREAKFAST REPUBLIC
CALIFORNIA

CINNAHOLIC
Gourmet Cinnamon Rolls

Limpah Cleaners

ALCOVE

E 2ND STREET (33,500 VPD)

5305

E 2ND STREET

Individual Office for Sublease

Contacts

STEVE KOLSKY

Executive Vice President

t 310-201-2061

steve.kolsky@nmrk.com

CA RE License #00997737

CLAUDIA LARA

t 562-439-3050

claudia@kolskyrealty.com

Corporate License #01355491

The information contained herein has been obtained from sources deemed reliable but has not been verified and no guarantee, warranty or representation, either express or implied, is made with respect to such information. Terms of sale or lease and availability are subject to change or withdrawal without notice.

NEWMARK