



DATE: 2/14/2023



THIS DOCUMENT, THE IDEAS AND DESIGNS INCORPORATED HEREIN, AS AN INSTRUMENT OF PROFESSIONAL SERVICE, IS THE PROPERTY OF LORING DESIGN GROUP AND IS NOT TO BE USED, IN WHOLE OR IN PART, FOR ANY OTHER PROJECT WITHOUT THE WRITTEN AUTHORIZATION OF LORING DESIGN GROUP, INC.

LORING DESIGN GROUP
 109 ANDERSON STREET SE, SUITE 105
 MARIETTA, GA 30060
 PH: 678.290.9200
 EMAIL: INFO@LORINGDGC.COM

HOSCHTON EXCHANGE
 5994 HWY 124 W, SUITE 100 & 105
 HOSCHTON, GA 30548

DRAWN BY: SM
 CHECKED BY: JWT
 PROJECT: TR2304
 REVISION:
 REVISION:

EXTERIOR ELEVATIONS

DRAWING NUMBER
A4

GWINNETT COUNTY ARCHITECTURAL DESIGN STANDARDS
 1025 SF TOTAL FACADE
 307 SF ALLOWED TO BE EIFS, FIBER CEMENT, ETC
 307 SF ACTUAL COVERAGE



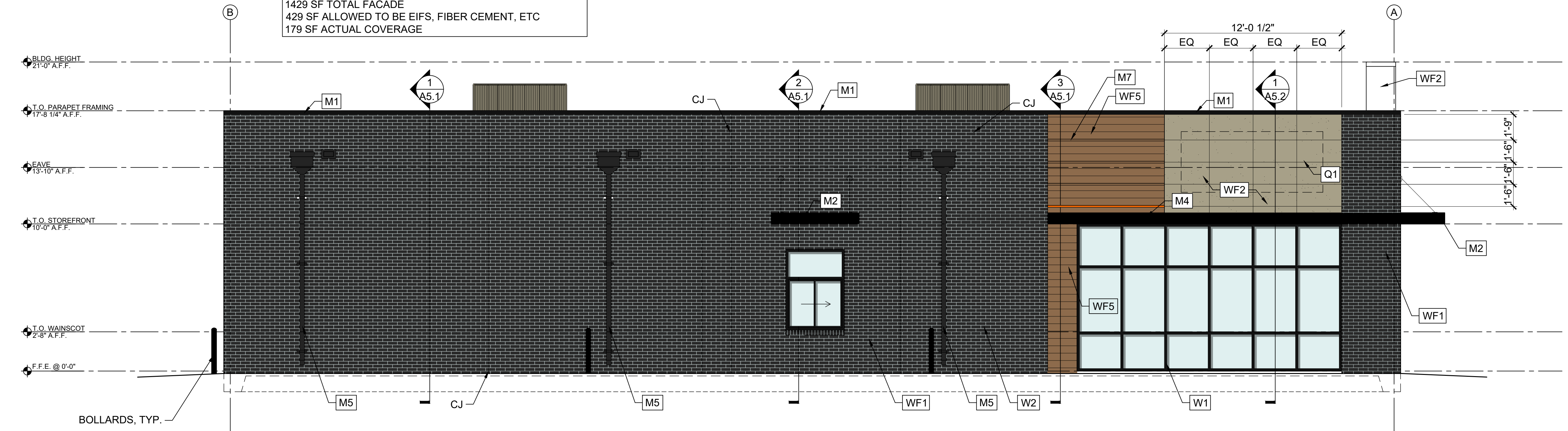
1 EXTERIOR ELEVATION (FRONT)
 SCALE: 1/4" = 1'-0"

NOTE:
 CJ = CONTROL JOINT (MASONRY OR EIFS).
 MAX. HORIZONTAL SPACING: 25'-0"

ELEVATION FINISH SCHEDULE

ITEM		MANUFACTURER	MODEL	COLOR	COMMENTS
WF1	BRICK, RUNNING BOND	CHEROKEE	-	VELOUR BLACK	
WF2	EIFS (COLOR 1)	STO	STOTHERM CI	STO 31137 (OR EQUIV)	
WF3	EIFS (COLOR 2)	STO	STOTHERM CI	STO 31137	
WF4	BRICK, SOLDIER COURSE	CHEROKEE	CHEROKEE	VELOUR DARK GRAY	
WF5	FIBER CEMENT PLANK SIDING	JAMES HARDIE	SELECT CEDARMILL	TIMBER BARK	6" EXPOSURE
WF6	BRICK, RUNNING BOND	CHEROKEE	-	VELOUR DARK GRAY	
M1	CONT. ALUM COPING, TYP.	PACTITE	TAPERED COPING*	ANODIZED BLACK	
M2	CANOPY (DUNKIN)	BY OTHERS	PER TENANT	BLACK	
M3	CANOPY (RESTAURANT)	BY OTHERS	PER TENANT	TBD	
M4	ALUM. ORNAMENTAL BAND	BY OTHERS	PER TENANT	BLACK	
M5	ALUM. CONDUCTOR HEAD AND DOWNSPOUT	TBD		DARK GRAY	
M6	ALUM. BENT METAL FASCIA ELEMENT	PER TENANT	PER TENANT	PER TENANT	
M7	ALUM. ACCENT STRIP	PER TENANT	PER TENANT	PER TENANT	
M8	ALUM. RTU SCREEN	CITYSCAPES	ENVISOR 52 (VERT.)	CYPRESS MOSS OR EQUIV	
W1	STOREFRONT WINDOW	YKK	45 YES FI	ANODIZED BLACK	
W2	DRIVE THRU WINDOW	READY ACCESS	275 LOW PROFILE	ANODIZED BLACK	
Q1	EXTERIOR SIGNAGE	BY OTHERS	BY OTHERS		
Q2	CANOPY LIGHTS	BY OTHERS	BY OTHERS	BY OTHERS	

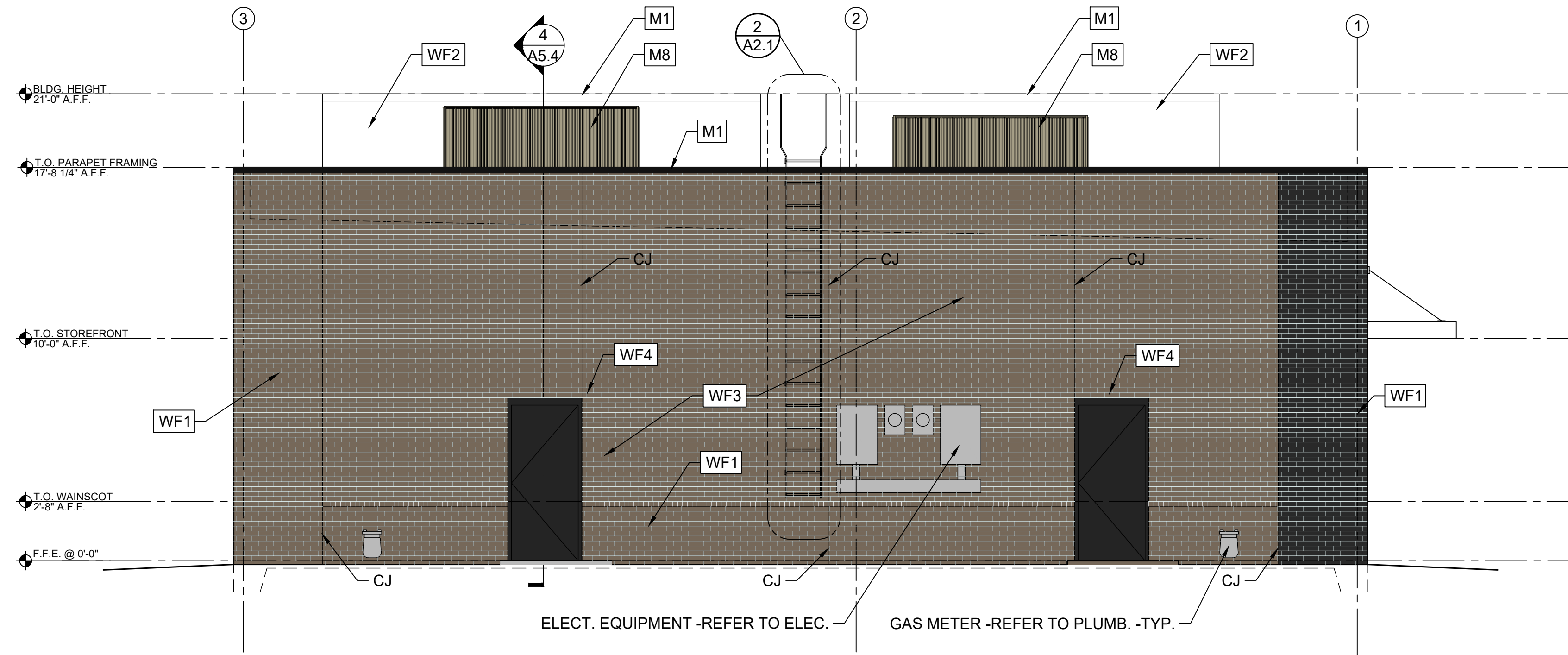
GWINNETT COUNTY ARCHITECTURAL DESIGN STANDARDS
 1429 SF TOTAL FACADE
 429 SF ALLOWED TO BE EIFS, FIBER CEMENT, ETC
 179 SF ACTUAL COVERAGE



2 EXTERIOR ELEVATION
 SCALE: 1/4" = 1'-0"

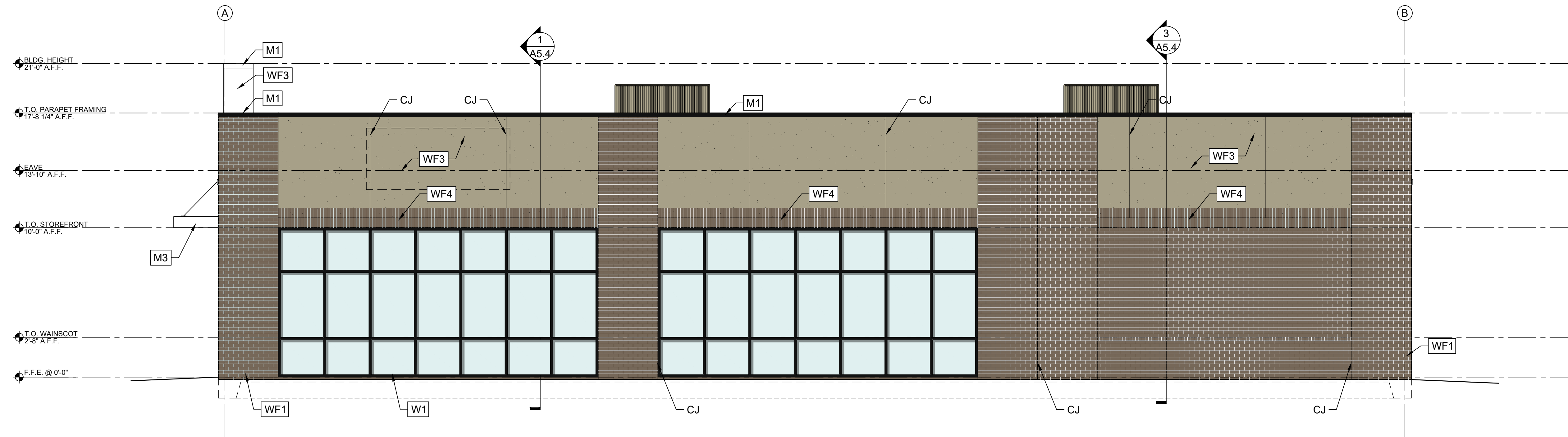
GWINNETT COUNTY ARCHITECTURAL DESIGN STANDARDS
 910 SF TOTAL FACADE
 273 SF ALLOWED TO BE EIFS, FIBER CEMENT, ETC
 50 SF ACTUAL COVERAGE

ELEVATION FINISH SCHEDULE					
ITEM		MANUFACTURER	MODEL	COLOR	COMMENTS
WF1	BRICK, RUNNING BOND	CHEROKEE	-	VELOUR BLACK	
WF2	EIFS (COLOR 1)	STO	STOTHERM CI	STO 31137 (OR EQUIV)	
WF3	EIFS (COLOR 2)	STO	STOTHERM CI	STO 31137	
WF4	BRICK, SOLDIER COURSE	CHEROKEE	CHEROKEE	VELOUR DARK GRAY	
WF5	FIBER CEMENT PLANK SIDING	JAMES HARDIE	SELECT CEDARMILL	TIMBER BARK	6" EXPOSURE
WF6	BRICK, RUNNING BOND	CHEROKEE	-	VELOUR DARK GRAY	
M1	CONT. ALUM COPING, TYP.	PACTITE	TAPERED COPING*	ANODIZED BLACK	
M2	CANOPY (DUNKIN)	BY OTHERS	PER TENANT	BLACK	
M3	CANOPY (RESTAURANT)	BY OTHERS	PER TENANT	TBD	
M4	ALUM. ORNAMENTAL BAND	BY OTHERS	PER TENANT	BLACK	
M5	ALUM. CONDUCTOR HEAD AND DOWNSPOUT	TBD		DARK GRAY	
M6	ALUM. BENT METAL FASCIA ELEMENT	PER TENANT	PER TENANT	PER TENANT	
M7	ALUM. ACCENT STRIP	PER TENANT	PER TENANT	PER TENANT	
M8	ALUM. RTU SCREEN	CITYSCAPES	ENVISOR 52 (VERT.)	CYPRESS MOSS OR EQUIV	
W1	STOREFRONT WINDOW	YKK	45 YES FI	ANODIZED BLACK	
W2	DRIVE THRU WINDOW	READY ACCESS	275 LOW PROFILE	ANODIZED BLACK	
Q1	EXTERIOR SIGNAGE	BY OTHERS	BY OTHERS		
Q2	CANOPY LIGHTS	BY OTHERS	BY OTHERS	BY OTHERS	



1 EXTERIOR ELEVATION (REAR)
 A4.1 SCALE: 1/4" = 1'-0"

NOTE:
 CJ = CONTROL JOINT (MASONRY OR EIFS).
 MAX. HORIZONTAL SPACING: 25'-0"



2 EXTERIOR ELEVATION (RESTAURANT)
 A4.1 SCALE: 1/4" = 1'-0"

GWINNETT COUNTY ARCHITECTURAL DESIGN STANDARDS
 1429 SF TOTAL FACADE
 429 SF ALLOWED TO BE EIFS, FIBER CEMENT, ETC
 392 SF ACTUAL COVERAGE



DATE: 2/14/2023
LDG
 LORING DESIGN GROUP

THIS DOCUMENT, THE IDEAS AND DESIGNS INCORPORATED HEREIN, AS AN INSTRUMENT OF PROFESSIONAL SERVICE, IS THE PROPERTY OF LORING DESIGN GROUP AND IS NOT TO BE USED, IN WHOLE OR IN PART, FOR ANY OTHER PROJECT WITHOUT THE WRITTEN AUTHORIZATION OF LORING DESIGN GROUP, INC.

LORING DESIGN GROUP
 109 ANDERSON STREET SE, SUITE 105
 MARIETTA, GA 30060
 PH: 678.290.9200
 EMAIL: INFO@LORINGDGD.COM

HOSCHTON EXCHANGE
 5994 HWY 124 W, SUITE 100 & 105
 HOSCHTON, GA 30548

DRAWN BY: SM
 CHECKED BY: JWT
 PROJECT: TR2304
 REVISION:
 REVISION:

EXTERIOR ELEVATIONS

DRAWING NUMBER
A4.1