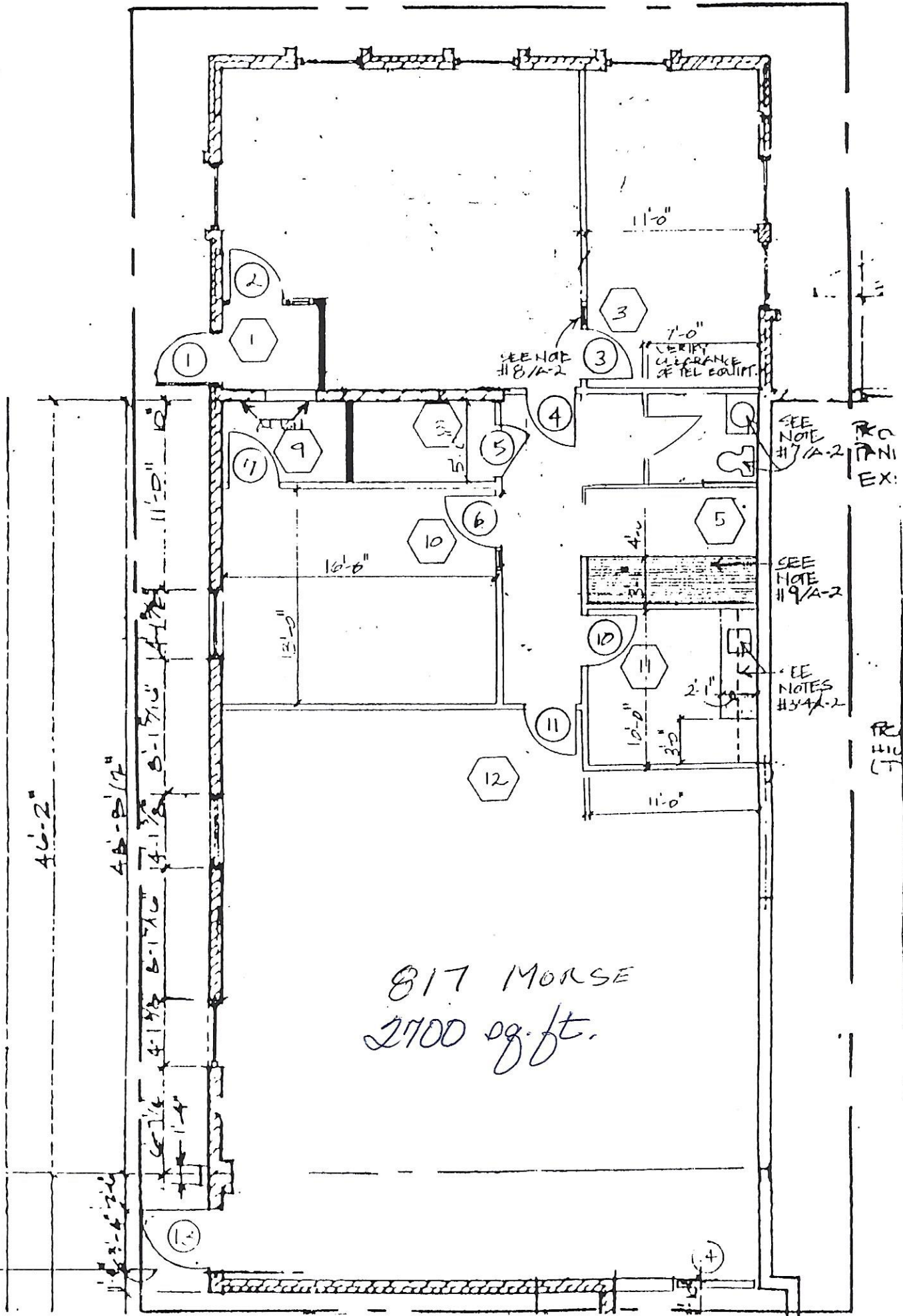


1/8"



46'-2"

48'-8 1/2"

11'-0"

13'-0"

14'-1 3/8"

14'-1 3/8"

14'-1 3/8"

16'-0"

13'-0"

10'-0"

10'-0"

3'-0"

10'-0"

11'-0"

10'-0"

3'-0"

2'-1"

10'-0"

11'-0"

11'-0"

1'-0"

4'-0"

4'-0"

3'-0"

2'-1"

10'-0"

11'-0"

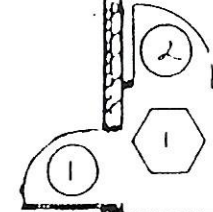
11'-0"

11'-0"

11'-0"

11'-0"

11'-0"



SEE NOTE #8/A-2

1'-0" VERIFY CLEARANCE OF TEL. EQUIPT.

SEE NOTE #7/A-2

SEE NOTE #9/A-2

SEE NOTES #3/A-2

R.O. PANI EX.

FR. HIC (T)

817 MORSE
2700 sq. ft.