



OFFICE-RETAIL SPACES **FOR LEASE**

1512 SOUTHWOOD AVENUE, SUITES B & C | CHARLOTTE

Versatile office or retail spaces available in a newly renovated building in the heart of Charlotte's vibrant South End, ideal for a wide range of business uses.

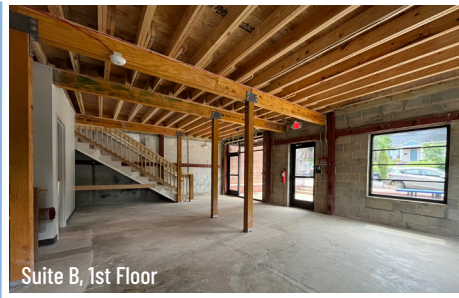
KEVIN MITCHELL
c 704 317 9245
kmitchell@mecacommercial.com

ZACH DANIEL, CCIM
c 704 560 1192
zdaniel@mecacommercial.com





Suite B, 2nd Floor



Suite B, 1st Floor



Suite C



AI Rendering of Unit B, 2nd Floor, Not To Scale



PROPERTY INFORMATION

SPACE 1 - SUITE B

SF*

2,084± Total SF

- 623 SF on first floor
- 1,461 SF on second floor

FEATURES

- Open floor plan
- Street-facing front-door access
- Large entrance
- Two bathrooms in common area
- Bright South-East orientation for optimized natural light

SPACE 2 - SUITE C

SF*

918 SF

FEATURES

- Open floor plan
- Private bathroom

AVAILABILITY: Immediately

ZONING: TOD-NC (HDO) (Neighborhood Center)

LEASE RATE: Contact Broker for details

FLOOR PLAN



The first floor of Suite B can accommodate larger or smaller surface up to double the one currently displayed.

mecacommercial.com

© 2025 Metro Realty, LLC. All rights reserved. Metro Realty, LLC fully supports the principles of the Fair Housing Act and the Equal Opportunity Act.
*The land acreage and/or building square footage was obtained from the County's Geographical Information System or other electronic resources. For exact square footage and/or acreage, we recommend that prior to purchase, a prospective Buyer/Tenant obtain a boundary survey or have the building measured professionally.

KEVIN MITCHELL
c 704 317 9245
kmitchell@mecacommercial.com



ZACH DANIEL, CCIM
c 704 560 1192
zdaniel@mecacommercial.com

