

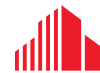


**FOR SALE | INDUSTRIAL FLEX**

**OFFICE / WAREHOUSE CONDO**

**1220 EXECUTIVE BLVD, SUITES 113 & 114**

Chesapeake, VA, 23320



**CUSHMAN &  
WAKEFIELD**

**THALHIMER**

# SPECIFICATIONS



## PROPERTY FEATURES

**Approximate SF:** ±2,200 SF office/ warehouse

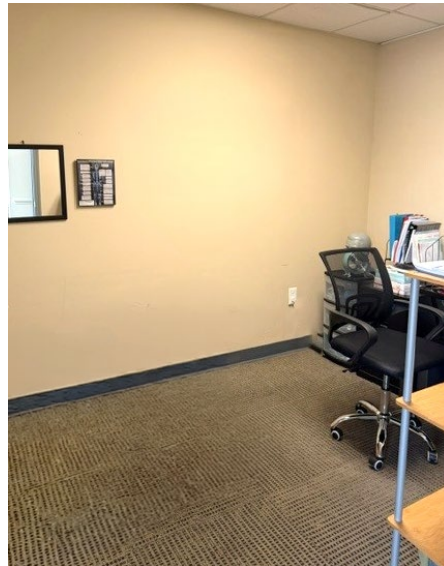
- 1,100 SF - includes reception area, plus four (4) offices, bathroom, and kitchenette
- 1,100 SF - warehouse area includes two (2) gas heaters, two (2) 12' x 14' grade-level overhead doors, two (2) 200 service amp panels, 18' ceiling height

## Miscellaneous:

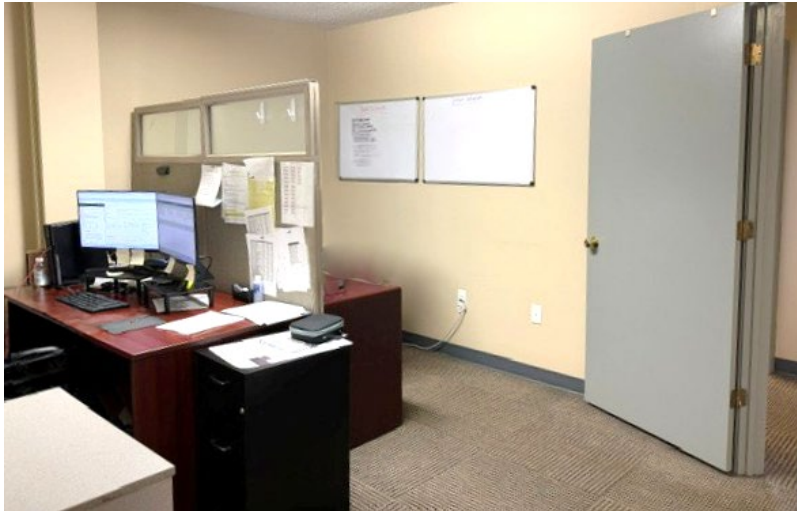
- Condominium recently renovated with new roof
- New exterior painting
- Newly paved and striped parking lot

**Asking Price:** \$396,000 "as-is"

**Condo Fee:** \$330.78 per month  
(water, sewer, trash, exterior lighting, parking lot maintenance, landscaping, and building insurance)



# PROPERTY PHOTOS



# LOCATION MAP



VISTA HELIX mosaic  
403 TOTAL LUXURY RESIDENCES

BARNES & NOBLE HOBBY LOBBY BEST BUY WELLS FARGO  
target Total Wine & MORE Cane's PETSMART OfficeMax W  
Harris Teeter Neighborhood Food & Pharmacy OLD NAVY  
GREENBRIER MARKET CENTER

DOLLAR TREE HQ SUMMIT POINTE  
iHeartMEDIA INC. MASSEY HIND BREWING COMPANY  
Chesapeake VIRGINIA ECONOMIC DEVELOPMENT LUCE  
ARIZONA COLLEGE of Nursing XGOLF  
TULL FINANCIAL GROUP FIRST WATCH THE DAYTIME CAFE

ALDI SENTARA HEALTHCARE FOOD LION

1226 EXECUTIVE BLVD.

86,511 POPULATION 3-Miles	\$83,446 MEDIAN HHI 3-Miles	\$374,043 MEDIAN HOME VALUE 3-Miles	39.2 MEDIAN AGE 3-Miles

## CONTACT

**JANET WHITBECK**  
Senior Vice President  
757 213 4147  
janet.whitbeck@thalhimer.com

The Town Center of Virginia Beach  
222 Central Park Avenue, Suite 1500  
Virginia Beach, VA 23462  
thalhimer.com



Independently Owned and Operated / A Member of the Cushman & Wakefield Alliance

Cushman & Wakefield | Thalhimer © 2026. No warranty or representation, express or implied, is made to the accuracy or completeness of the information contained herein, and same is submitted subject to errors, omissions, change of price, rental or other conditions, withdrawal without notice, and to any special listing conditions imposed by the property owner(s). As applicable, we make no representation as to the condition of the property (or properties) in question.