

# 10 ACRES + RV HOOKUP MAINTENANCE FACILITY

5805 FM 1788, Midland, TX 79706

INDUSTRIAL FOR LEASE



**TUCKER SCHNEEMANN**

432.661.4880

[tucker@nrgrealtgroup.com](mailto:tucker@nrgrealtgroup.com)

**BRIAN STEFFENILLA**

214.998.8675

[brian@nrgrealtgroup.com](mailto:brian@nrgrealtgroup.com)

**NRG REALTY GROUP**

[NRGREALTYGROUP.COM](http://NRGREALTYGROUP.COM)



# 10 ACRES + RV HOOKUP MAINTENANCE FACILITY

EXECUTIVE SUMMARY

5805 FM 1788, MIDLAND, TX 79706



## OFFERING SUMMARY

Lease Rate:	Contact Broker
Building Size:	10,000 SF
Lot Size:	10.04 Acres
Year Built:	2012
Zoning:	None, County

## PROPERTY OVERVIEW

Positioned on a spacious 10.04 Acre lot, the property features a 10,000 SF industrial service facility. The office space spans 2,500 SF including 11 private offices, a kitchenette/break room, conference/training area, and restrooms. 7,500 SF of warehouse space features (2) 16' overhead doors forming 1 drive-in bay and (3) 14' overhead doors offering efficient equipment loading. Additional workspace is provided by a 50'x30' concrete slab on the side of the shop and a covered area on the front of the building. There is extensive outside storage capacity across the fully fenced lot. The lot also includes a contained space for fuel or chemical storage and 2 full RV hook-ups to service workforce housing. Serviced by Single Phase power, water well, and septic system. The concrete slab can be converted into a wash-bay. Contact Tucker Schneemann or Brian Steffenilla for more details on this opportunity.

## LOCATION OVERVIEW

From Interstate 20 in Midland, Tx take the exit for FM 1788 and travel south for approximately 1.5 miles. The property offers 500' of frontage directly on FM 1788 with high visibility and direct highway access.

**TUCKER SCHNEEMANN**

432.661.4880  
tucker@nrgrealtgroup.com

**BRIAN STEFFENILLA**

214.998.8675  
brian@nrgrealtgroup.com



# 10 ACRES + RV HOOKUP MAINTENANCE FACILITY

5805 FM 1788, MIDLAND, TX 79706

PROPERTY HIGHLIGHTS



## PROPERTY HIGHLIGHTS

- 10,000 SF on 10.04 Acres
- Automatic Gate Entry
- 11 Total Offices
- (2) 16'x14' Overhead Doors forming 1 Drive-Through Bay
- (3) 14'x12' Overhead Doors to Warehouse
- Covered Parking
- Fuel/Chemical Island
- (2) RV Hookups
- 240v/Single Phase - 200 amps Power
- Water Well, Septic System
- Wash-Bay Can be Added for Additional Cost



**TUCKER SCHNEEMANN**

432.661.4880

tucker@nrgrealtygroup.com

**BRIAN STEFFENILLA**

214.998.8675

brian@nrgrealtygroup.com



# 10 ACRES + RV HOOKUP MAINTENANCE FACILITY

5805 FM 1788, MIDLAND, TX 79706

ADDITIONAL PHOTOS



**TUCKER SCHNEEMANN**

432.661.4880  
tucker@nrgrealtygroup.com

**BRIAN STEFFENILLA**

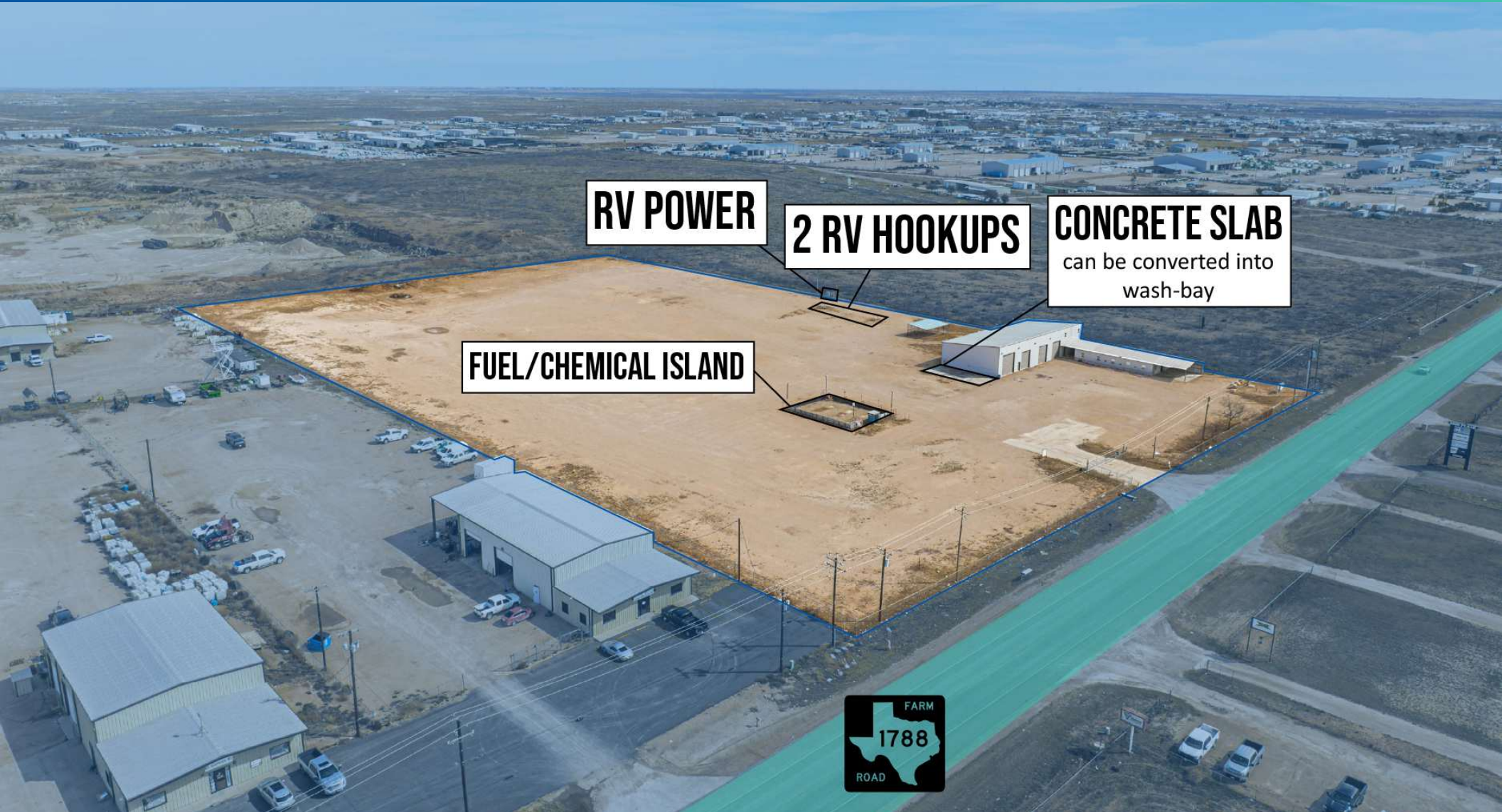
214.998.8675  
brian@nrgrealtygroup.com



# 10 ACRES + RV HOOKUP MAINTENANCE FACILITY

5805 FM 1788, MIDLAND, TX 79706

SITE FEATURES LABELED



**TUCKER SCHNEEMANN**

432.661.4880  
tucker@nrgrealtygroup.com

**BRIAN STEFFENILLA**

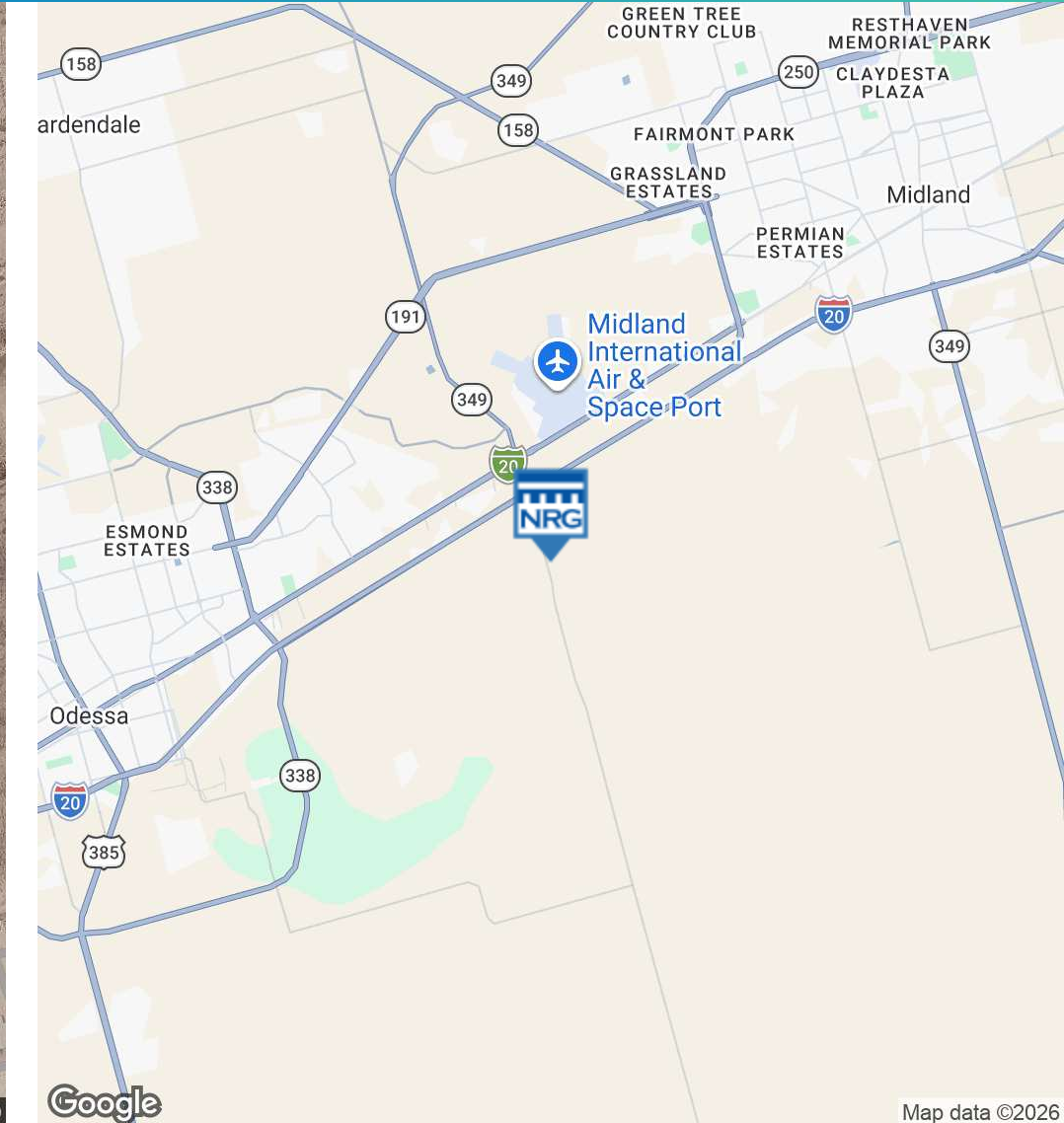
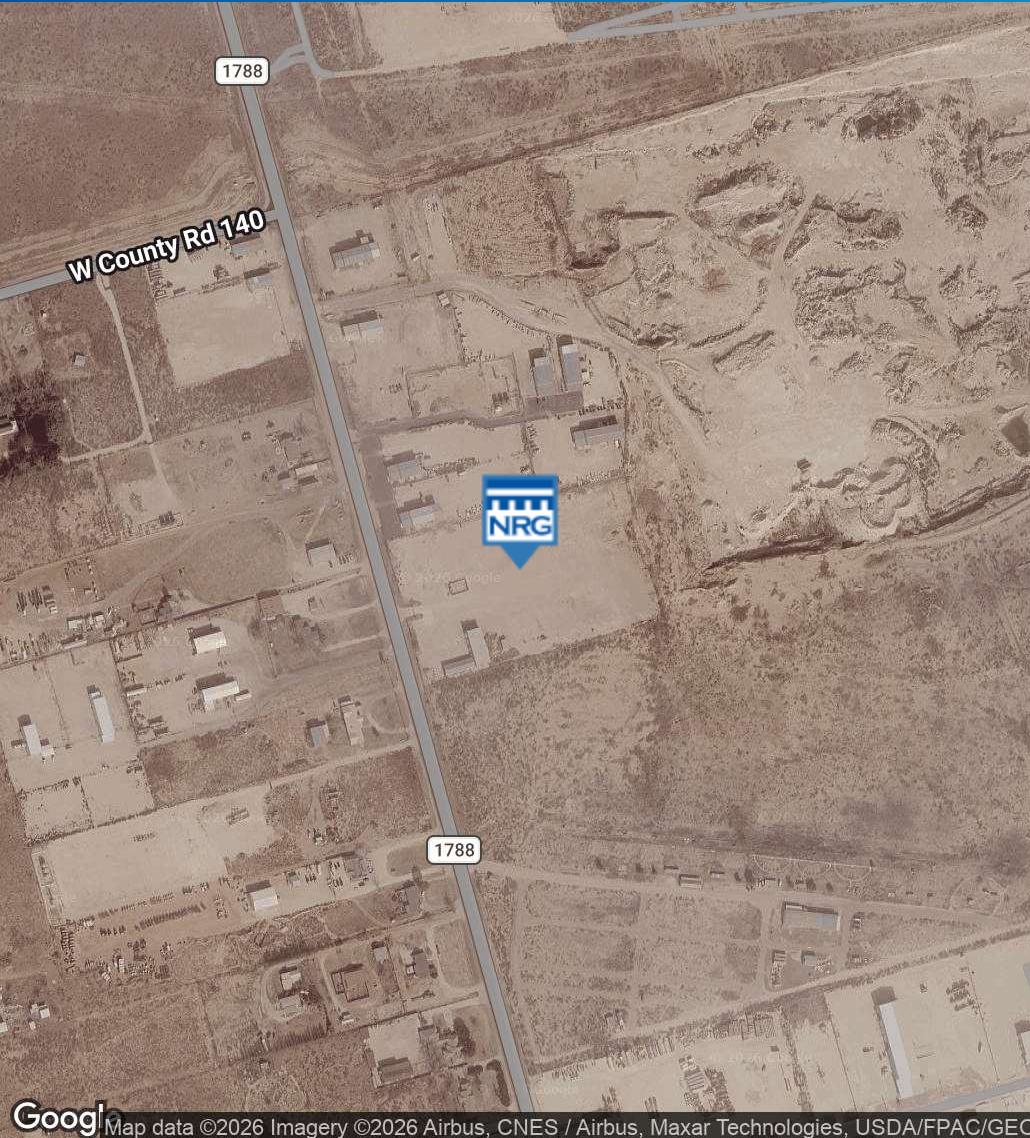
214.998.8675  
brian@nrgrealtygroup.com



# 10 ACRES + RV HOOKUP MAINTENANCE FACILITY

5805 FM 1788, MIDLAND, TX 79706

LOCATION MAP



**TUCKER SCHNEEMANN**

432.661.4880  
tucker@nrgrealtgroup.com

**BRIAN STEFFENILLA**

214.998.8675  
brian@nrgrealtgroup.com







**5805 FM 1788, MIDLAND, TX 79706**

**CONTACT BROKERS:**

**TUCKER SCHNEEMANN**

432.661.4880  
tucker@nrgrealtygroup.com

**BRIAN STEFFENILLA**

214.998.8675  
brian@nrgrealtygroup.com

**NRG REALTY GROUP**

**DALLAS OFFICE**

6191 State Hwy 161, Suite 430, Irving, TX  
214.432.7930

**MIDLAND OFFICE**

1611 W Illinois Ave, Midland, TX 79701  
432.363.4777

All information furnished regarding property for sale, rental or financing is from sources believed to be reliable, but no warranty or representation is made to the accuracy thereof and same is submitted to errors, omissions, change of price, rental or other conditions prior to sale, lease or financing or withdrawal without notice. The information contained herein is not a substitute for a thorough due diligence investigation. No liability of any kind based on the information is to be imposed on the broker herein.