

RETAIL CONDOMINIUM FOR SALE

# 358 West 23rd Street

CHELSEA  
NEW YORK, NY

NEWMARK



358 WEST 23RD STREET

# Property Details

## Location

West 23rd Street between 8th and 9th Avenues

## Approximate Size

Ground Floor 2,000 SF  
Lower Level 1,500 SF  
Total 3,500 SF

## For sale

Inquire for pricing

## Possession

Immediate

## Site Status

Tequila Chito's Restaurant

## Neighbors

Westside Tavern, Dallas BBQ, SVA Theatre, Gristides, Garber Hardware, Henry & the Lions, The Mermaid Inn, CVS and the High Line Park

## Comments

Commercial condominium for sale

RE Taxes: \$60,000

Common charges: \$14,883

Fully built turn-key restaurant with new black iron stack to roof

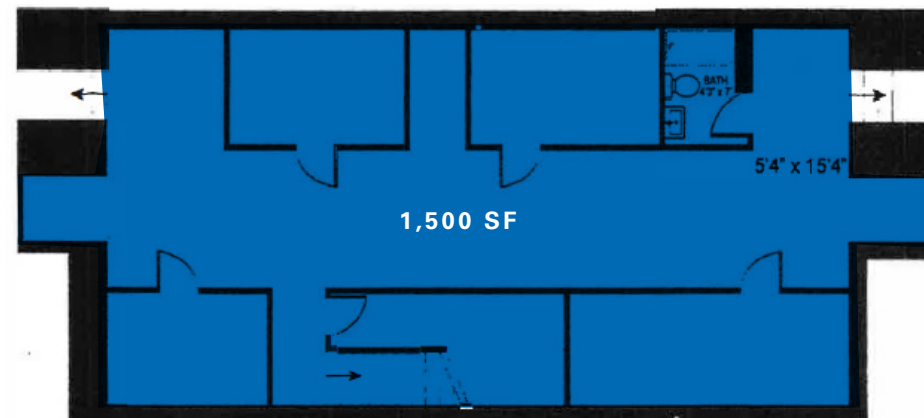
All equipment included

New gas lines throughout the premises

Ground Floor



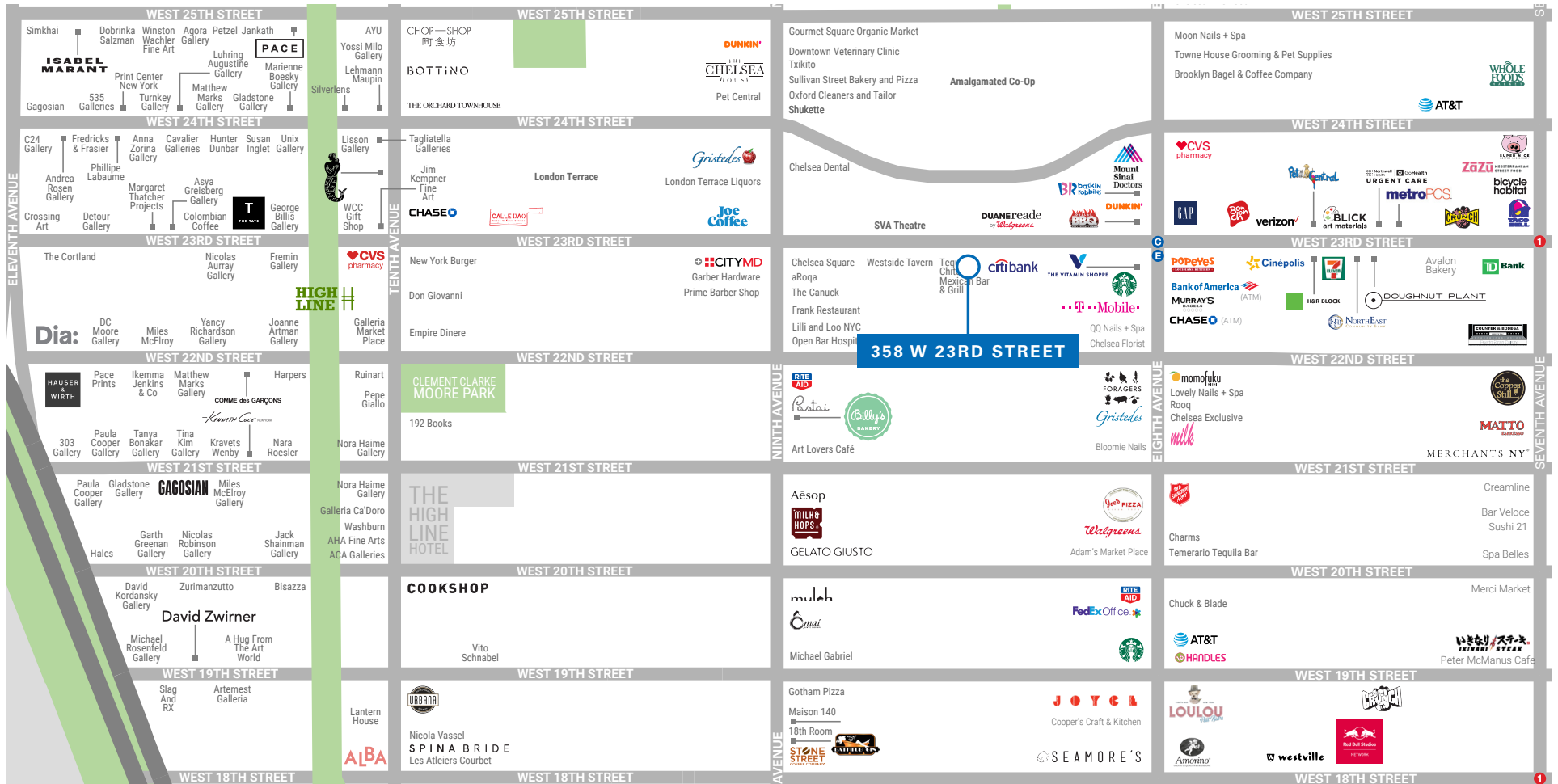
Lower Level



# Interior Photos



# 358 WEST 23RD STREET



## CONTACT

**Craig Slosberg**  
 t 212-372-2398  
 Craig.Slosberg@nmrk.com

**Ravi Idnani**  
 t 212-916-2938  
 Ravi.Idnani@nmrk.com

[nmrk.com](http://nmrk.com)

©2025 NEWMARK Licensed in New York as Newmark Retail, Real Estate Broker  
 The information contained herein has been obtained from sources deemed reliable but has not been verified and no guarantee, warranty or representation, either express or implied, is made with respect to such information. Terms of sale or lease and availability are subject to change or withdrawal without notice.