

PLYMOUTH PONDS VI

MN
MPLS

17200 Medina Rd
Plymouth, MN



FOR LEASE

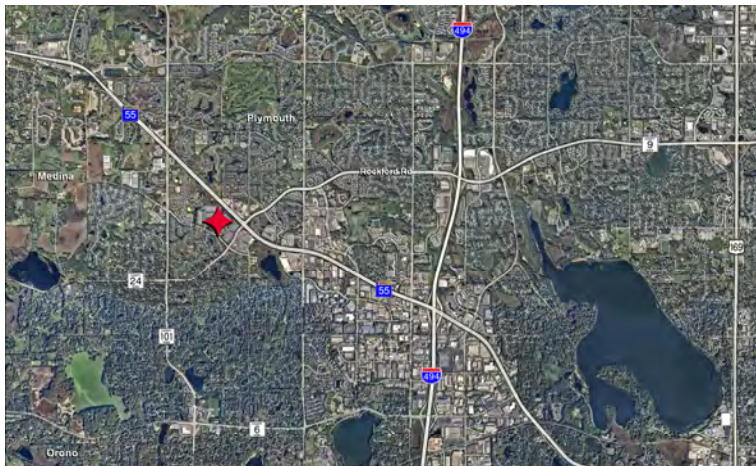
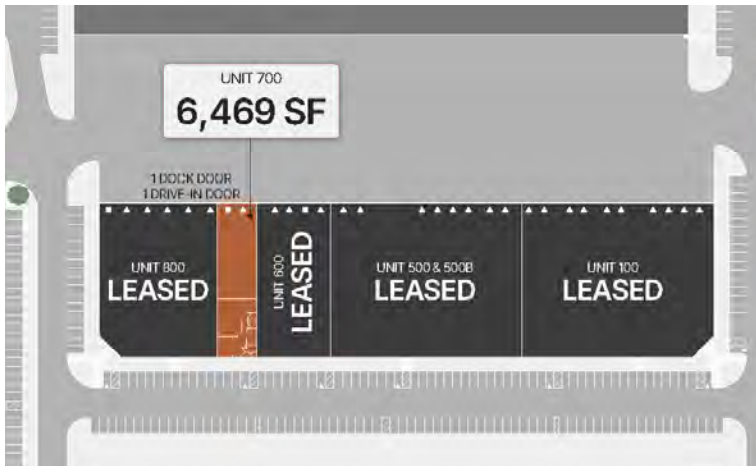
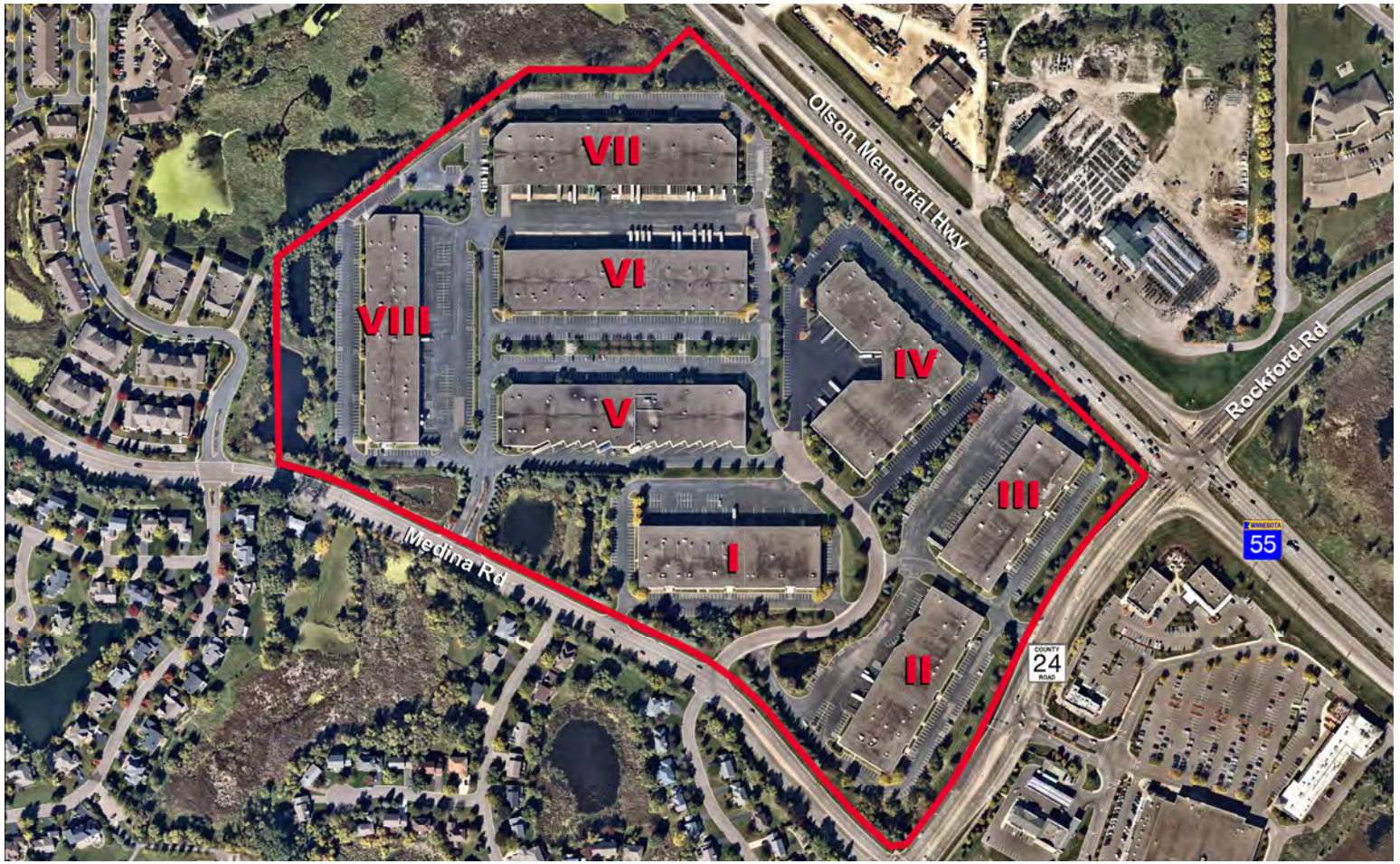
UNIT 700

6,469 SF



LEASED BY





PROPERTY HIGHLIGHTS

- Convenient location near Plymouth City Center and retail
- Quick access to Highways 55 & I-494
- Park-like setting
- Master planned Business Park consisting of eight 24' clear height buildings totaling more than 700,000 SF

Building Size 101,906 SF

Available Unit 700: 6,469 SF

Year Built 2000

Clear Height 24'

Lease Rate Negotiable

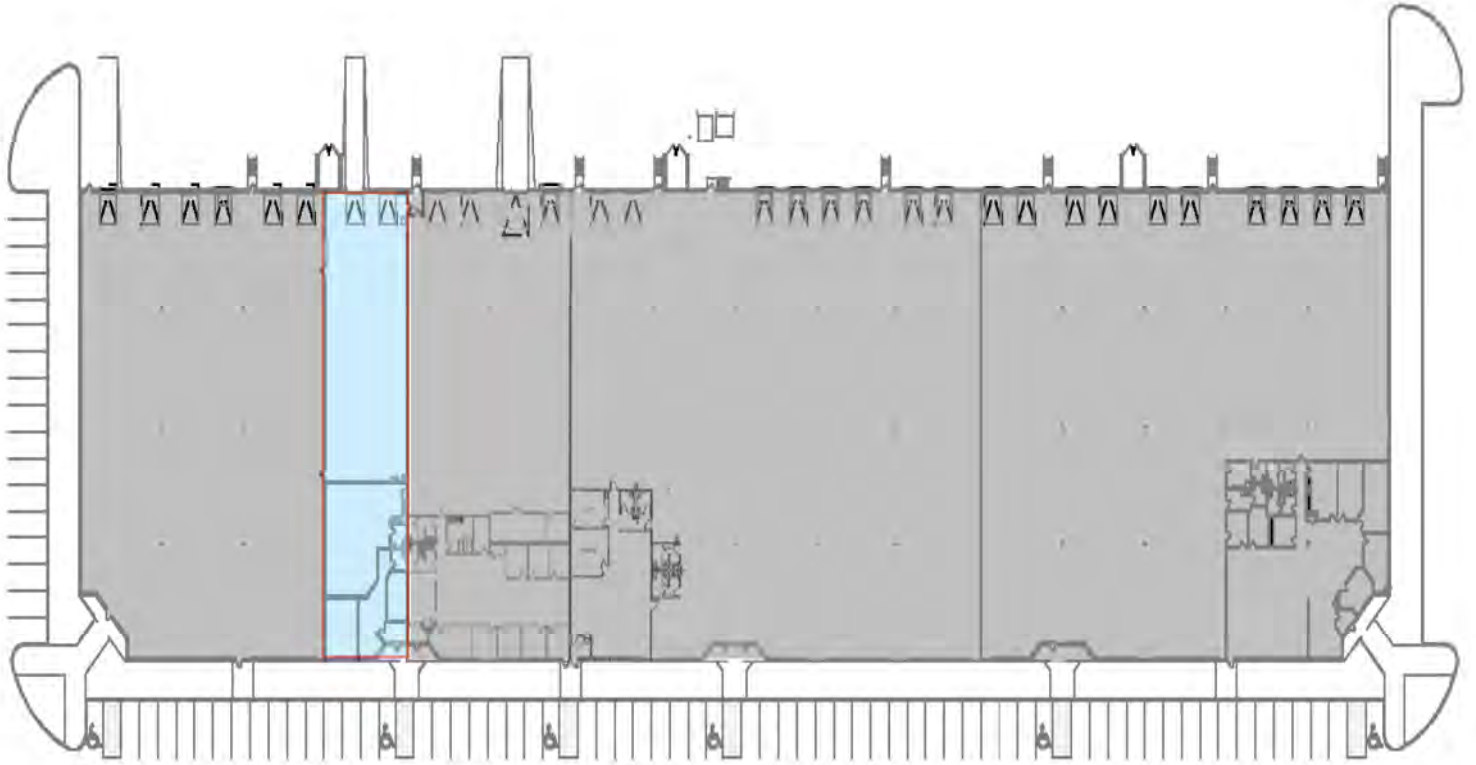
2026 Tax & CAM \$4.87 PSF



→ Unit 700

→ 1,211 SF Office
5,258 SF Warehouse
 6,469 SF Total

→ 1 Dock Door
 1 Drive-In Door



→ Unit 700

→ 1,211 SF Office
5,258 SF Warehouse
 6,469 SF Total

→ 1 Dock Door
 1 Drive-In Door

CONTACT INFORMATION

17200 Medina Rd
Plymouth, MN

Jason Meyer

Executive Director
952 994 8918

jason.j.meyer@cushwake.com

Brent Masica

Executive Managing Director
952 893 8231

brent.masica@cushwake.com

Judd Fenlon

Brokerage Services
612 231 9606

Judd.Fenlon@cushwake.com

This is not an offer or acceptance of an offer to lease space. A lease will only be offered or made in a written agreement signed by landlord. No representation or warranty of any kind is made by landlord unless set forth in a written definitive lease executed by the landlord.



LEASED BY

