

OFFICE & MEDICAL FOR LEASE

9685 VIA EXCELENCIA
SAN DIEGO, CA 92126



Voit

REAL ESTATE SERVICES

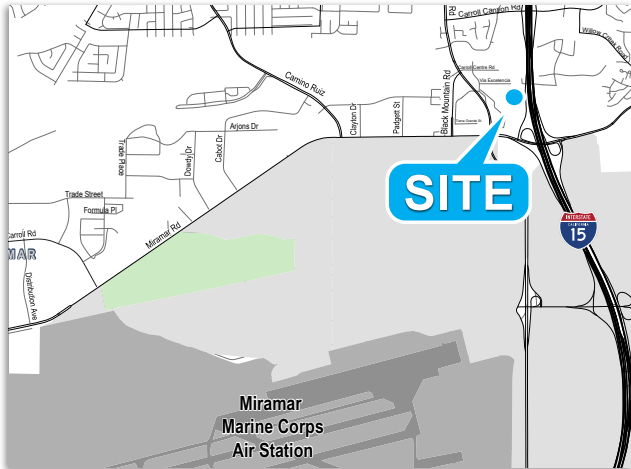
BRANDON KEITH | Senior Vice President | 858.458.3326 | bkeith@voitco.com | Lic. #01177792

CHRIS DURBIN | Associate | 858.458.3339 | cdurbin@voitco.com | Lic. #02227661

FOR LEASE

9685 VIA EXCELENCIA SAN DIEGO, CA 92126

Voit
REAL ESTATE SERVICES



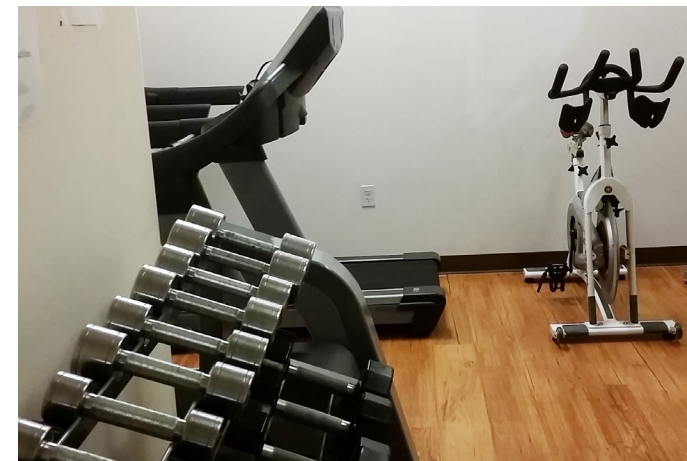
PROPERTY FEATURES

- » Class A Quality Office Building
- » High Quality Finishes in Each Suite
- » Gym, Lockers, and Showers
- » Covered Parking
- » Easy Access to I-15 and Miramar Road



AVAILABILITY

SUITE	SIZE	PRICE PSF	COMMENTS
108	±2,020 RSF	\$2.25 + U	General Office with Lobby/Reception, Conference Room, Open Office Area, and 3 Private Offices. Available in 30 Days.
208	5,395 RSF	\$2.25 + U	Reception, Conference Room, Server Room, Copy Room, Kitchen, 11 Private Offices, 6 Built-In Cubes/ Open Area, and Storage.

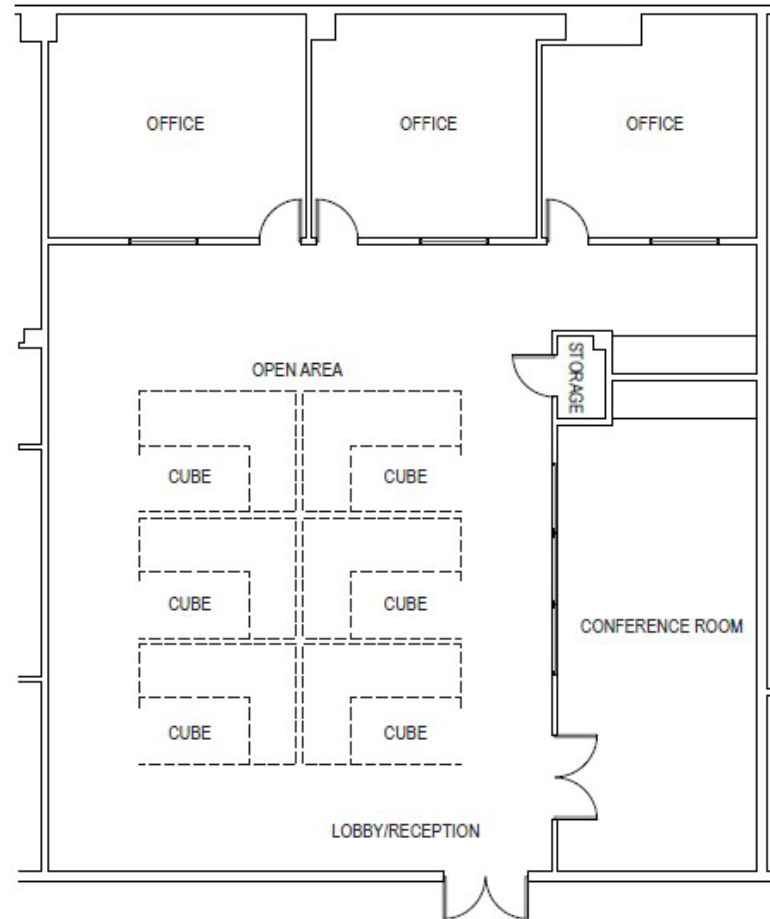


Voit
REAL ESTATE SERVICES

FOR LEASE

9685 VIA EXCELENCIA SAN DIEGO, CA 92126

FLOOR PLAN



SUITE 108: ±2,020 RSF

General Office with Lobby/Reception, Conference Room, Open Office Area, and 3 Private Offices.

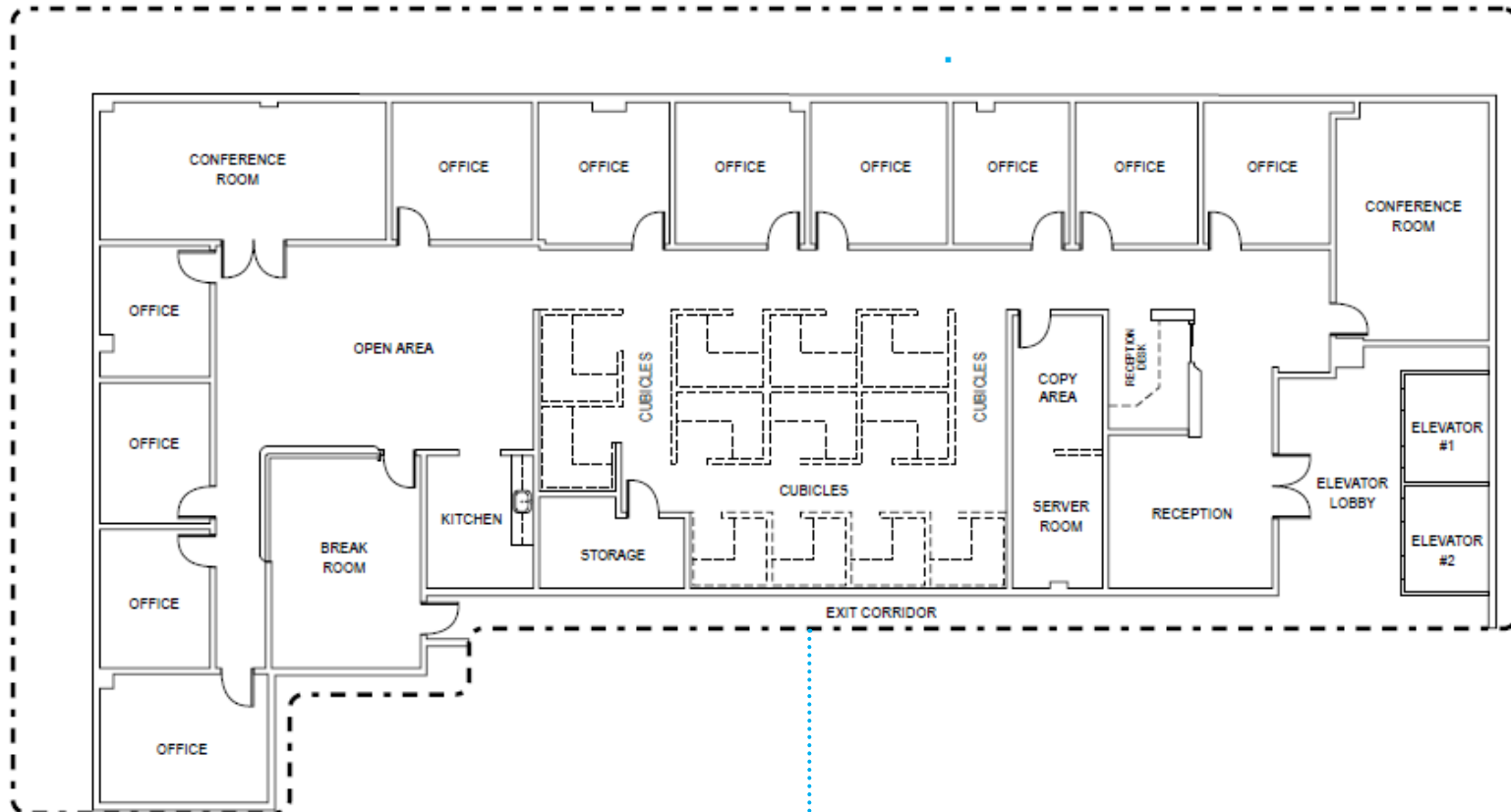
Available in 30 Days.

FOR LEASE

9685 VIA EXCELENCIA

SAN DIEGO, CA 92126

FLOOR PLAN



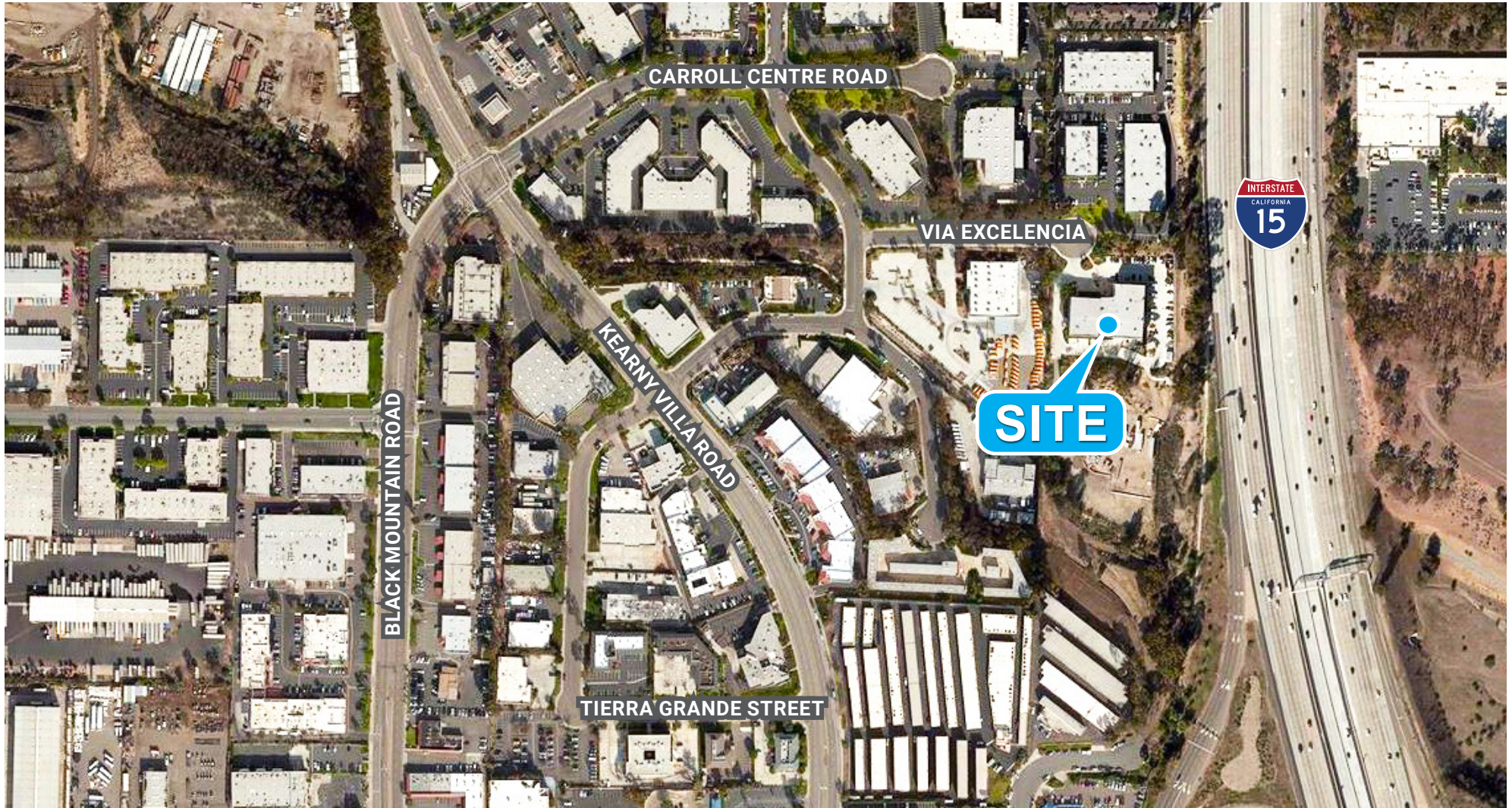
SUITE 208: ±5,395 RSF

Reception, Conference Room, Server Room, Copy Room, Kitchen, 11 Private Offices, 6 Built-In Cubes/ Open Area, and Storage.

FOR LEASE

9685 VIA EXCELENCIA

SAN DIEGO, CA 92126



BRANDON KEITH | Senior Vice President | 858.458.3326 | bkeith@voitco.com | Lic. #01177792

CHRIS DURBIN | Associate | 858.458.3339 | cdurbin@voitco.com | Lic. #02227661

4180 La Jolla Village Drive, Suite 100, La Jolla, CA 92037 • 858.453.0505 • 858.408.3976 Fax • Lic.#01991785 • www.voitco.com

Licensed as Real Estate Broker and Salespersons by the DRE. ©2026 Voit Real Estate Services, Inc. All Rights Reserved. The information contained herein has been obtained from sources we deem reliable. While we have no reason to doubt its accuracy, we do not guarantee it.

Voit

REAL ESTATE SERVICES