

FLEX INDUSTRIAL BUILDING

1690 Scenic Avenue, Costa Mesa, CA 92626



EXISTING PLAN:

- ±34,885 SF Free Standing Flex Industrial Building on ±1.53 Acre lot
- ±19,000 SF Office Build-out
- Clear Height: 14'-24'
- 2 Ground Level Doors/1 Dock High Door
- 800 Amps, 277/480 Volt Power (verify)
- Parking Spaces: 105 (3:1000)
- Large Fenced Yard
- Excellent Proximity to the San Diego (405) Freeway Access
- Located in "Measure X" Approved Cannabis Zone

CONCEPTUAL PLAN:

- ±27,385 SF Free Standing Flex Industrial Building on ±1.53 Acre lot
- ±12,500 SF Office Build-out
- Clear Height: 14'-24'
- 2 Ground Level Doors/1 Dock High Door
- 800 Amps, 277/480 Volt Power (verify)
- Parking Spaces: 105 (3:1000)
- Large Fenced Yard
- Excellent Proximity to the San Diego (405) Freeway Access
- Located in "Measure X" Approved Cannabis Zone

DANTE BORRUSO

Vice President, Partner
 909.775.4475
 Lic. #02086368
 dborruso@voitco.com



CHRISTIAN EMERSON

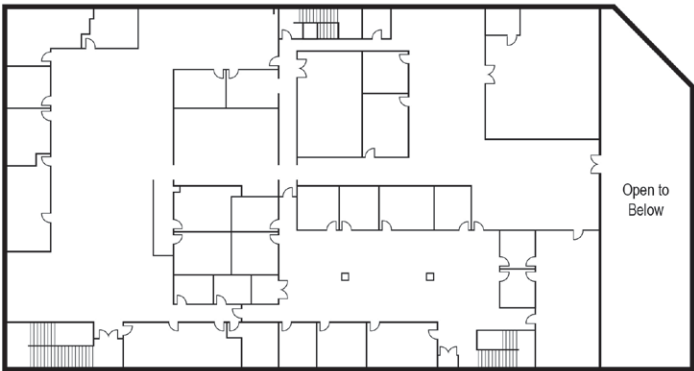
Commercial Team Lead
 916.517.0235
 Lic. #02104669
 christian@ogroup.com



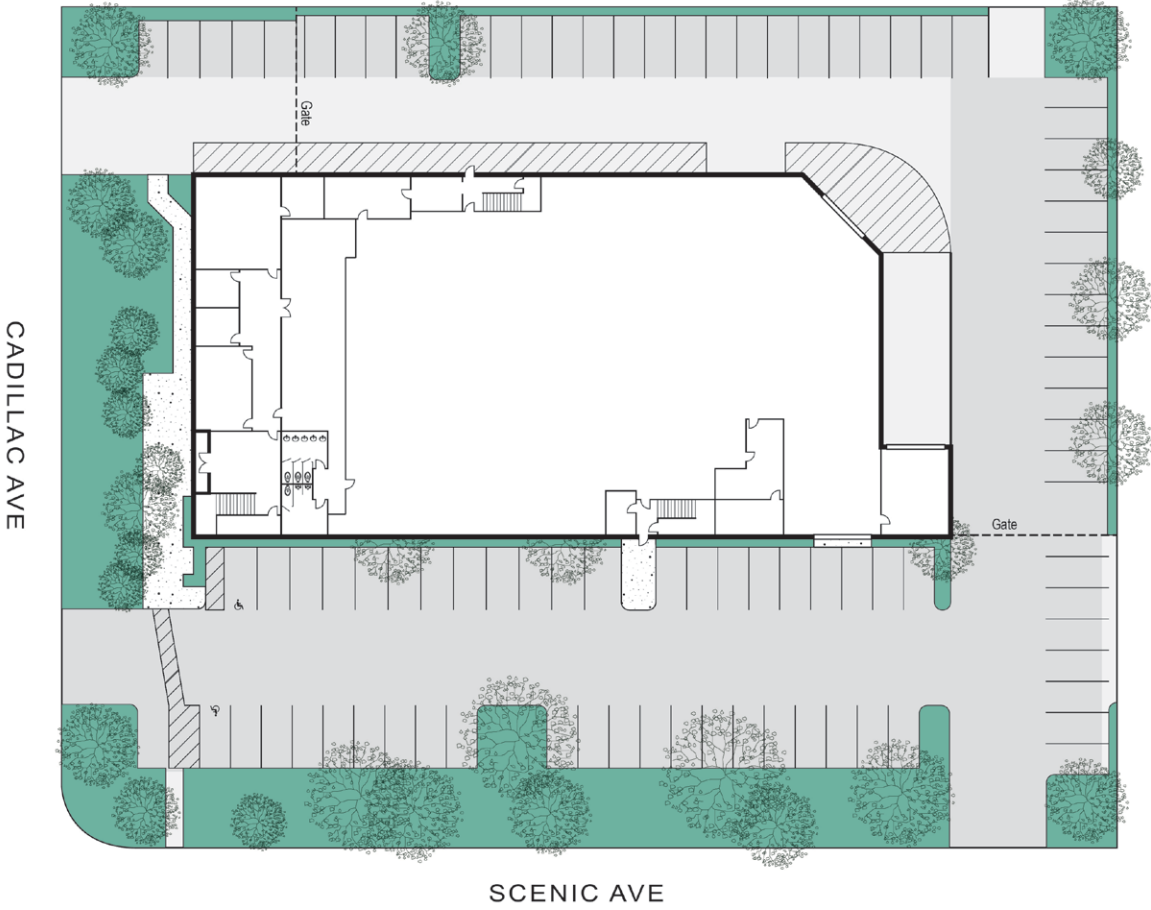
FLEX INDUSTRIAL BUILDING

1690 Scenic Avenue, Costa Mesa, CA 92626

EXISTING SITE PLAN



Second Floor



DANTE BORRUSO
Vice President, Partner
909.775.4475
Lic. #02086368
dborruso@voitco.com



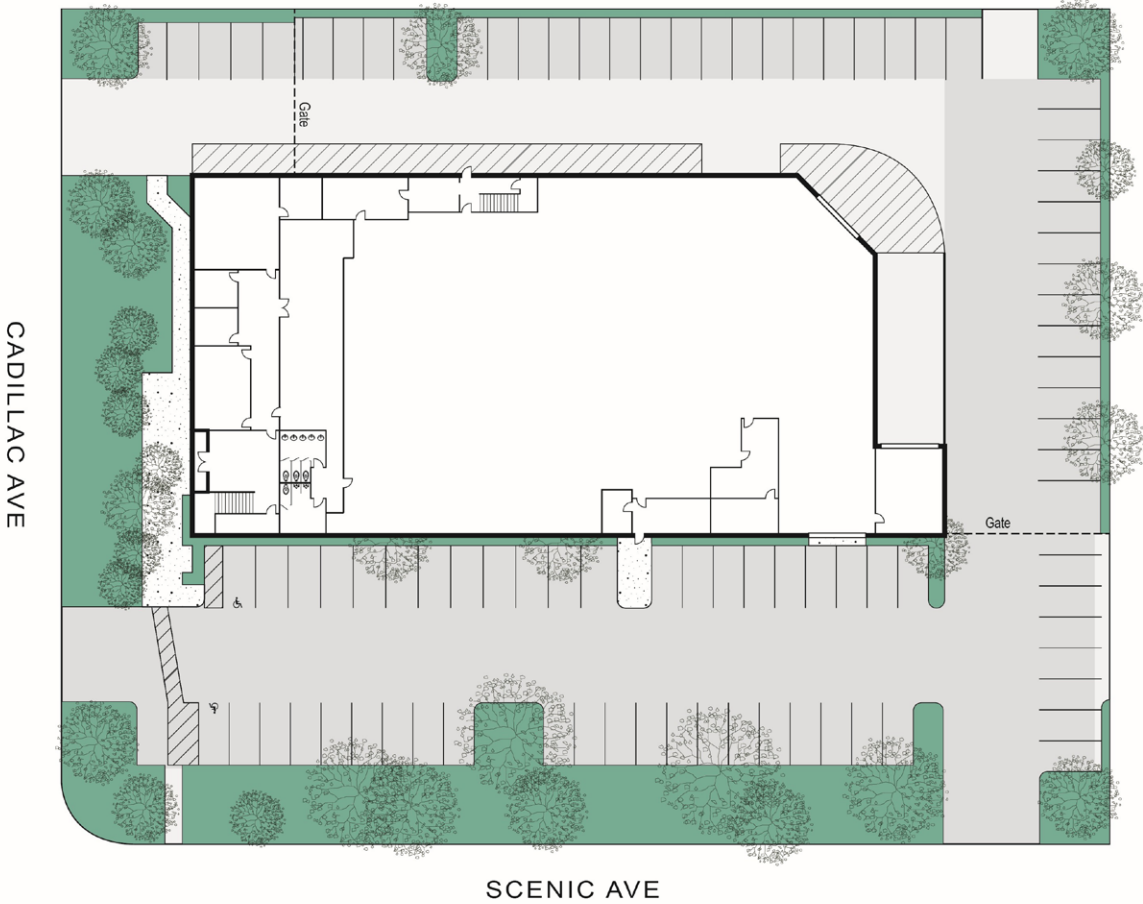
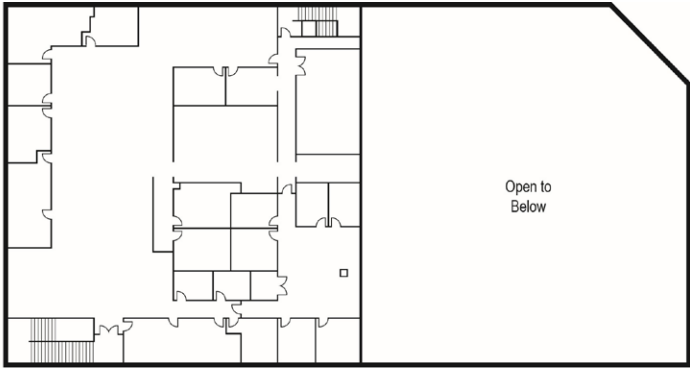
CHRISTIAN EMERSON
Commercial Team Lead
916.517.0235
Lic. #02104669
christian@ogroup.com



FLEX INDUSTRIAL BUILDING

1690 Scenic Avenue, Costa Mesa, CA 92626

CONCEPTUAL SITE PLAN



DANTE BORRUSO
Vice President, Partner
909.775.4475
Lic. #02086368
dborruso@voitco.com



CHRISTIAN EMERSON
Commercial Team Lead
916.517.0235
Lic. #02104669
christian@ogroup.com



FLEX INDUSTRIAL BUILDING

1690 Scenic Avenue, Costa Mesa, CA 92626

PROPERTY PHOTOS



DANTE BORRUSO
Vice President, Partner
909.775.4475
Lic. #02086368
dborruso@voitco.com



CHRISTIAN EMERSON
Commercial Team Lead
916.517.0235
Lic. #02104669
christian@ogroup.com



FLEX INDUSTRIAL BUILDING

1690 Scenic Avenue, Costa Mesa, CA 92626

PROPERTY PHOTOS



DANTE BORRUSO
Vice President, Partner
909.775.4475
Lic. #02086368
dborruso@voitco.com



CHRISTIAN EMERSON
Commercial Team Lead
916.517.0235
Lic. #02104669
christian@ogroup.com

