



Howard O'Hare Business Center

200 HOWARD AVENUE - SUITE 296
DES PLAINES, IL 60018

SPACE AVAILABLE

2,636 SF

WAREHOUSE / OFFICE SIZE

636 SF / 2,000 SF

OPEX

\$7.30 Total, 2025 Budget

NET LEASE RATE

Subject to Offer

PROPERTY HIGHLIGHTS

- Multi-tenant, single story complex
- Available onsite trailer/truck parking
- Abundant surface parking
- One (1) Drive-In Door
- 13 mins. to Rosemont Entertainment District
- 8 mins. to O'Hare terminal
- 14 mins. to South Cargo Entrance
- 4 mins. to I-90

For more information, please contact:

Thomas Gath

Managing Director

t +1-(773)-957-1415

thomas.gath@nmrk.com

8750 W Bryn Mawr Ave Suite 350
Chicago, IL 60631



NEWMARK

Licensed in Illinois as Newmark Midwest Region, LLC

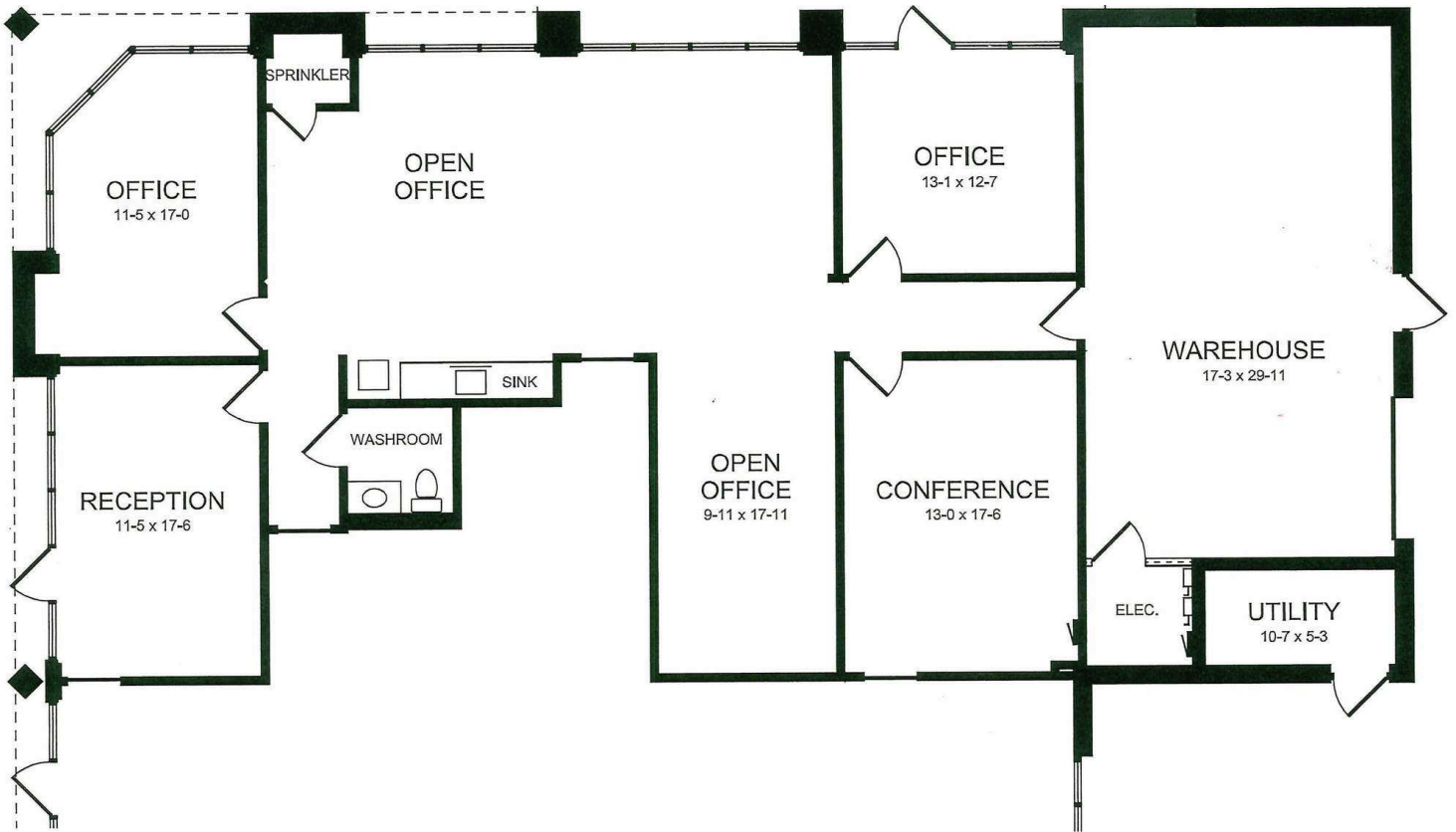
The information contained herein has been obtained from sources deemed reliable but has not been verified and no guarantee, warranty or representation, either express or implied, is made with respect to such information. Terms of sale or lease and availability are subject to change or withdrawal without notice.

HOWARD O'HARE BUSINESS CENTER / 200 HOWARD AVENUE - SUITE 296, DES PLAINES, IL 60018



8750 W Bryn Mawr Ave Suite 350
Chicago, IL 60631

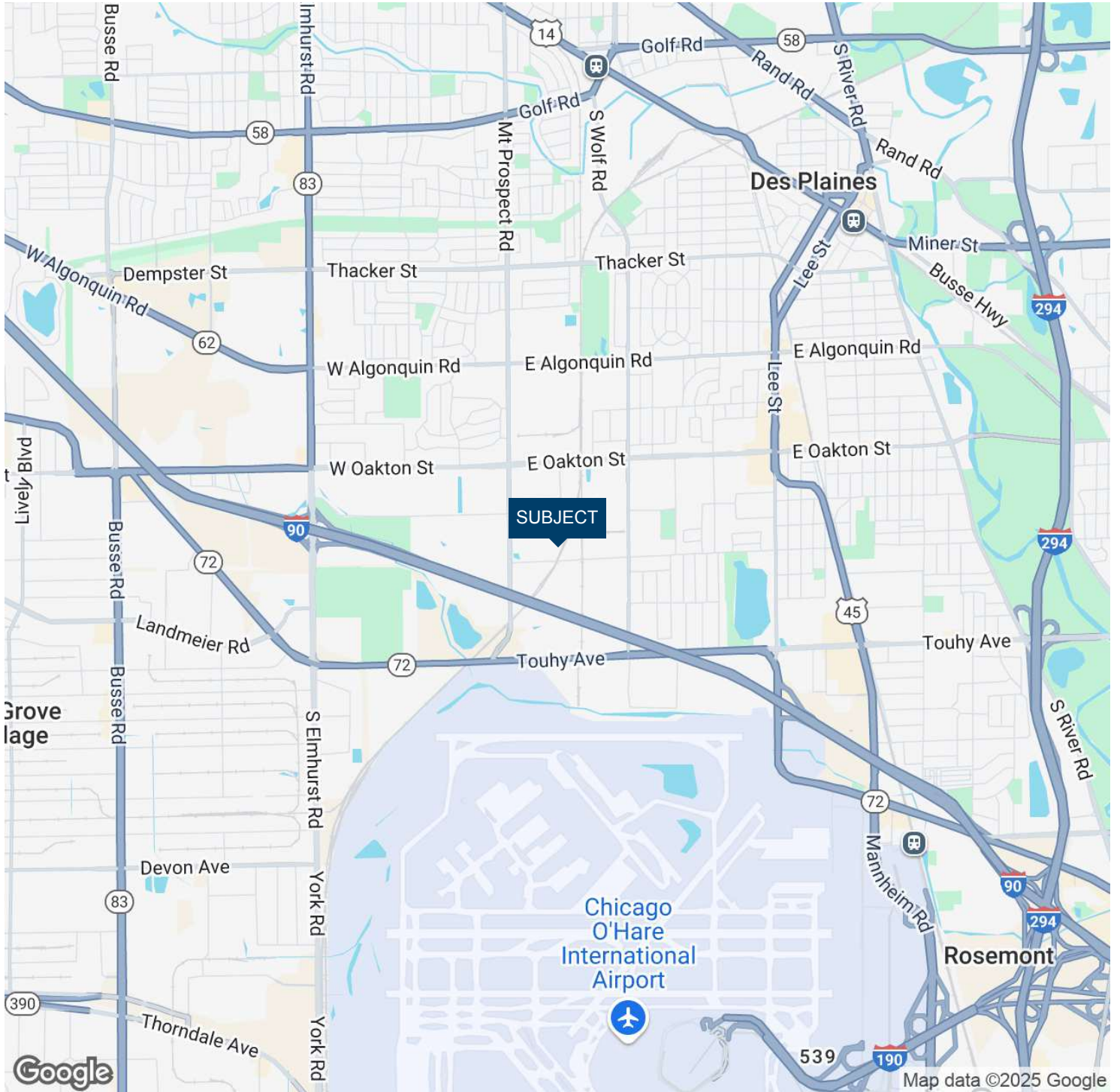




8750 W Bryn Mawr Ave Suite 350
Chicago, IL 60631



HOWARD O'HARE BUSINESS CENTER / 200 HOWARD AVENUE - SUITE 296, DES PLAINES, IL 60018



8750 W Bryn Mawr Ave Suite 350
Chicago, IL 60631



NEWMARK