

1420 E. TEN MILE ROAD  
UNIT #250  
HAZEL PARK, MICHIGAN  
INDUSTRIAL FOR LEASE  
97,840 Square Feet Available



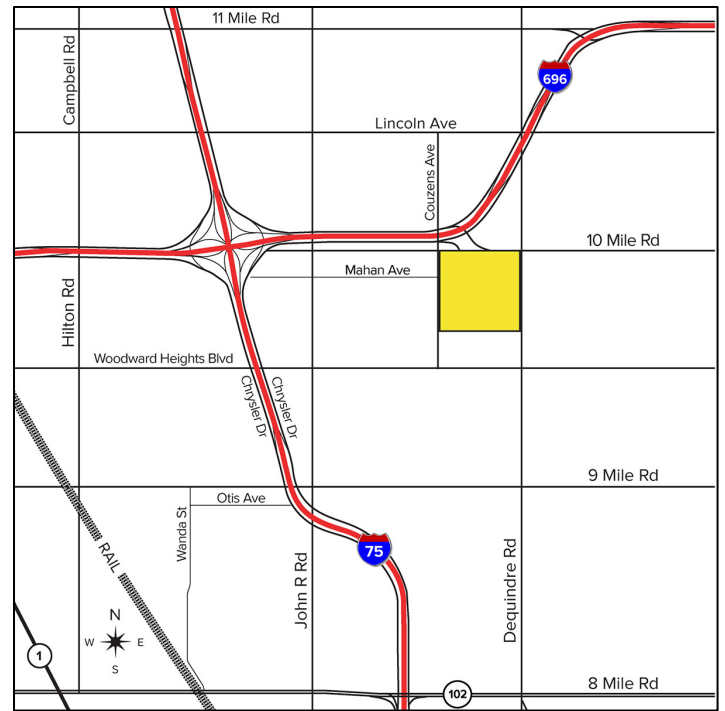
**SIGNATURE  
ASSOCIATES**  
KNOW SIGNATURE | KNOW RESULTS

## TRI-COUNTY COMMERCE CENTER



### PROPERTY FEATURES

- 97,840 square feet available
- 6,047 square feet office
- 32' clear height
- (1) 13' x 14' grade level door, (16) truckwells
- 400 amps, 480/277 volts power
- LED lighting
- 80 car parking
- Great access to I-696 & I-75
- Bays: 52' x 50' & 52' x 60'
- (10) docks are equipped
- Additional trailer parking available
- Lease Rate: \$8.95/sq. ft. NNN



For more information, please contact:

**GREG HUDAS**  
(248) 799 3162  
ghudas@signatureassociates.com

**JOE HAMWAY**  
(248) 948 0113  
jhamway@signatureassociates.com

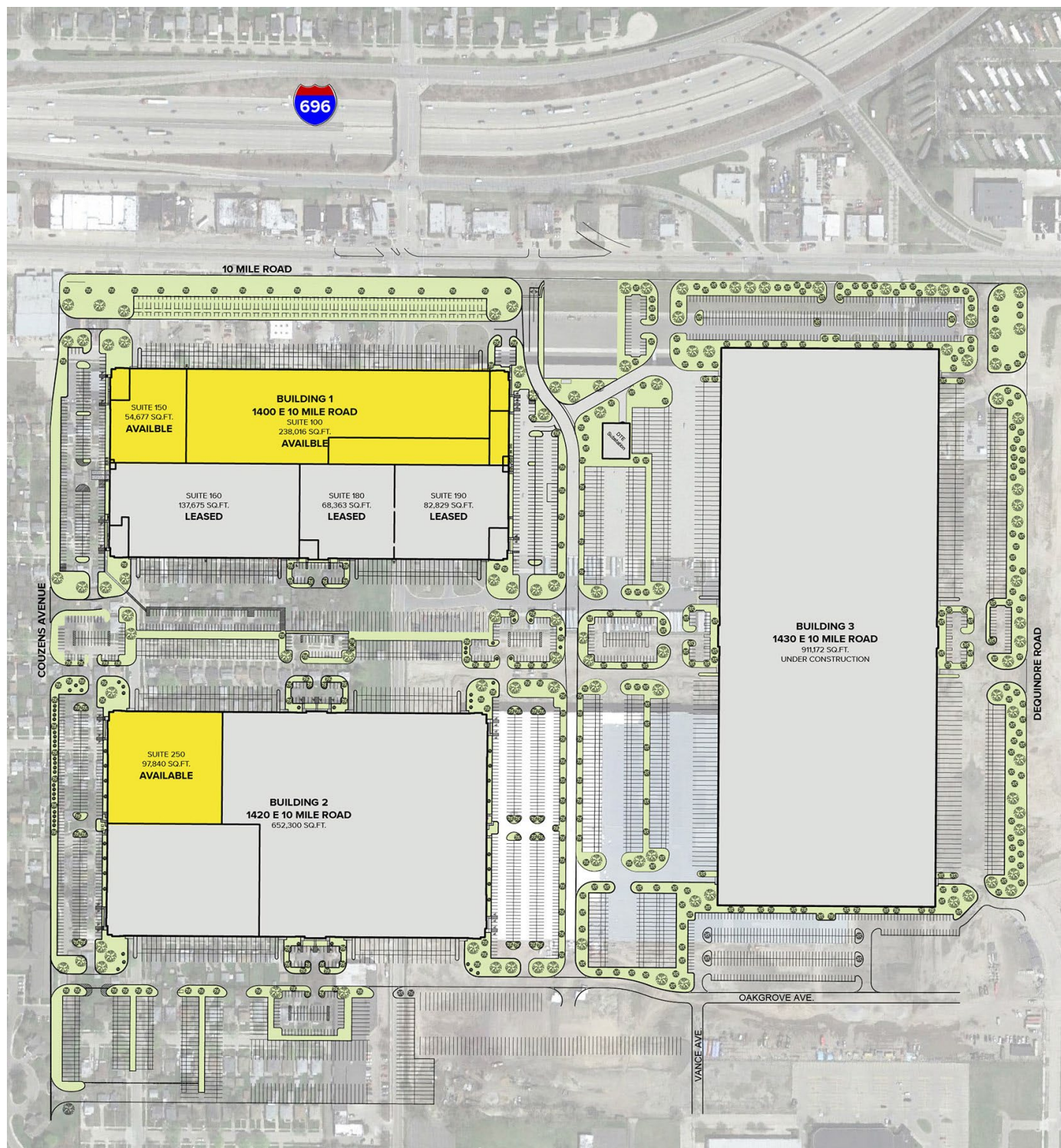
**SIGNATURE ASSOCIATES**  
One Towne Square, Suite 1200  
Southfield, MI 48076  
www.signatureassociates.com

# 1420 E. Ten Mile Road – Hazel Park, Michigan

## Industrial For Lease

97,840  
Square Feet  
AVAILABLE

### Site Plan



For more information, please contact:

**GREG HUDAS**  
(248) 799 3162  
ghudas@signatureassociates.com

**JOE HAMWAY**  
(248) 948 0113  
jhamway@signatureassociates.com

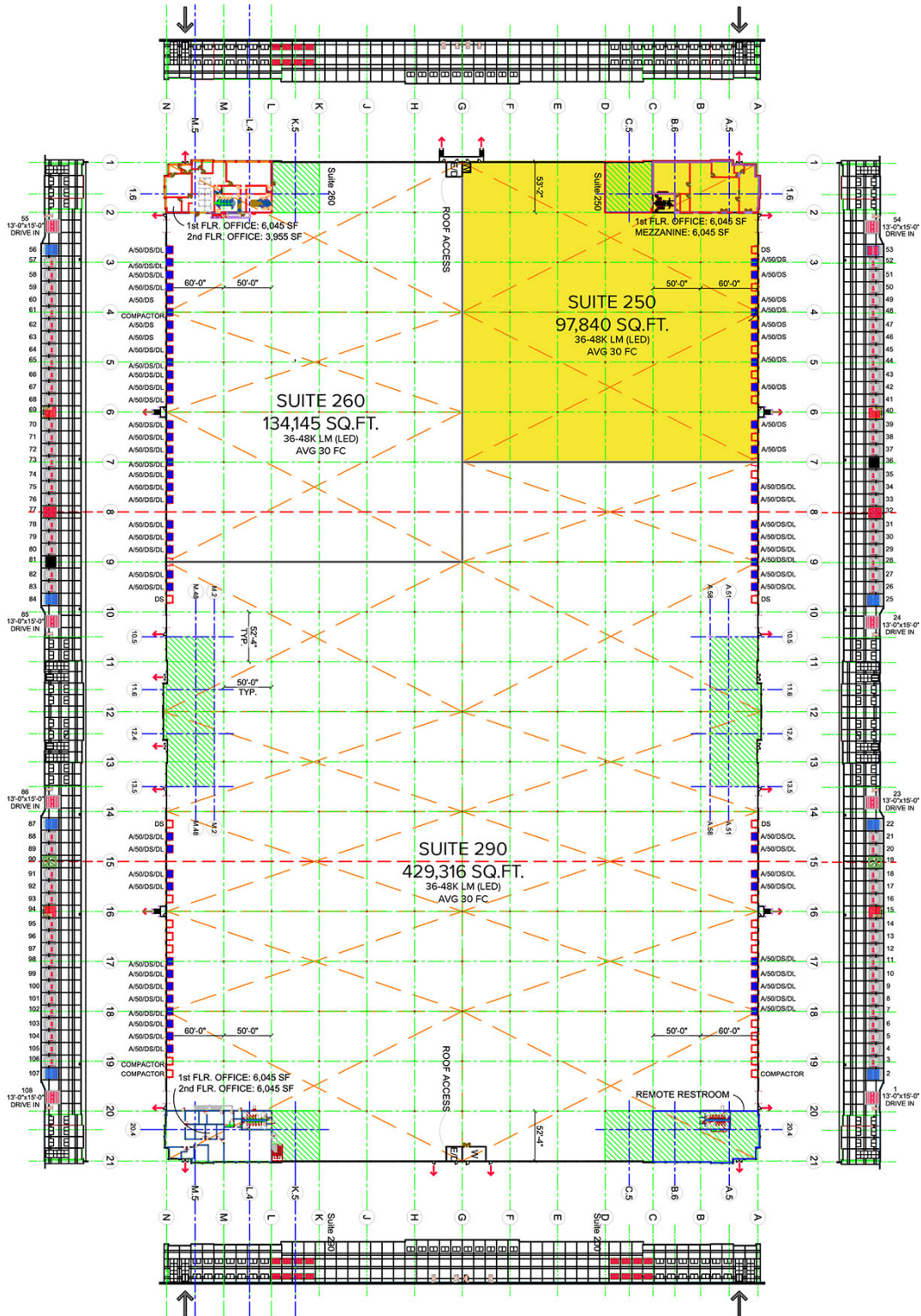
**SIGNATURE ASSOCIATES**  
One Towne Square, Suite 1200  
Southfield, MI 48076  
www.signatureassociates.com

# 1420 E. Ten Mile Road – Hazel Park, Michigan

## Industrial For Lease

97,840  
Square Feet  
AVAILABLE

### Floor Plan



For more information, please contact:

**GREG HUDAS**  
(248) 799 3162

ghudas@signatureassociates.com

**JOE HAMWAY**  
(248) 948 0113

jhamway@signatureassociates.com

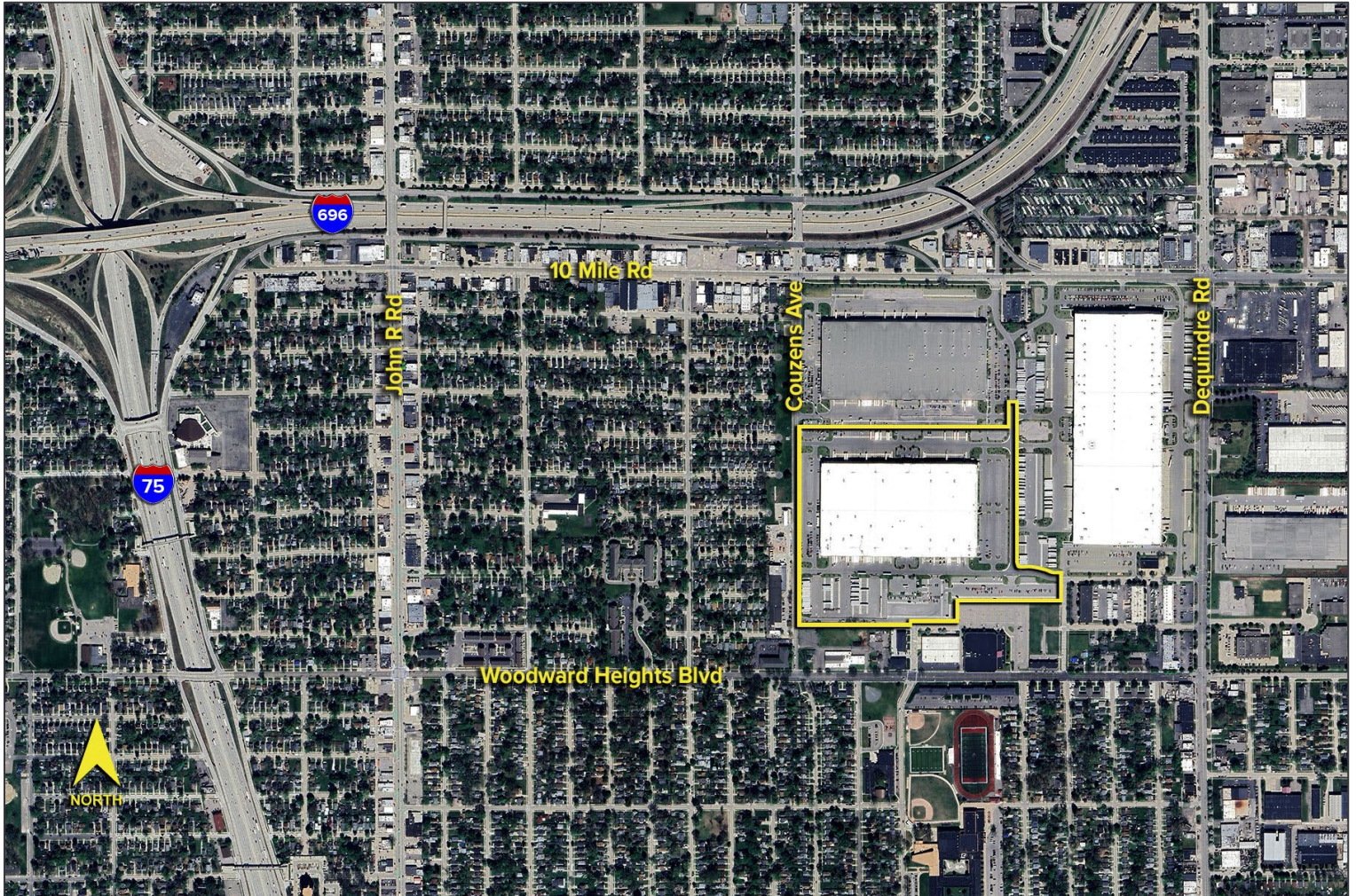
**SIGNATURE ASSOCIATES**  
One Towne Square, Suite 1200  
Southfield, MI 48076  
www.signatureassociates.com

# 1420 E. Ten Mile Road – Hazel Park, Michigan

Industrial For Lease

97,840  
Square Feet  
AVAILABLE

Aerial



For more information, please contact:

**GREG HUDAS**  
(248) 799 3162  
ghudas@signatureassociates.com

**JOE HAMWAY**  
(248) 948 0113  
jhamway@signatureassociates.com

**SIGNATURE ASSOCIATES**  
One Towne Square, Suite 1200  
Southfield, MI 48076  
www.signatureassociates.com