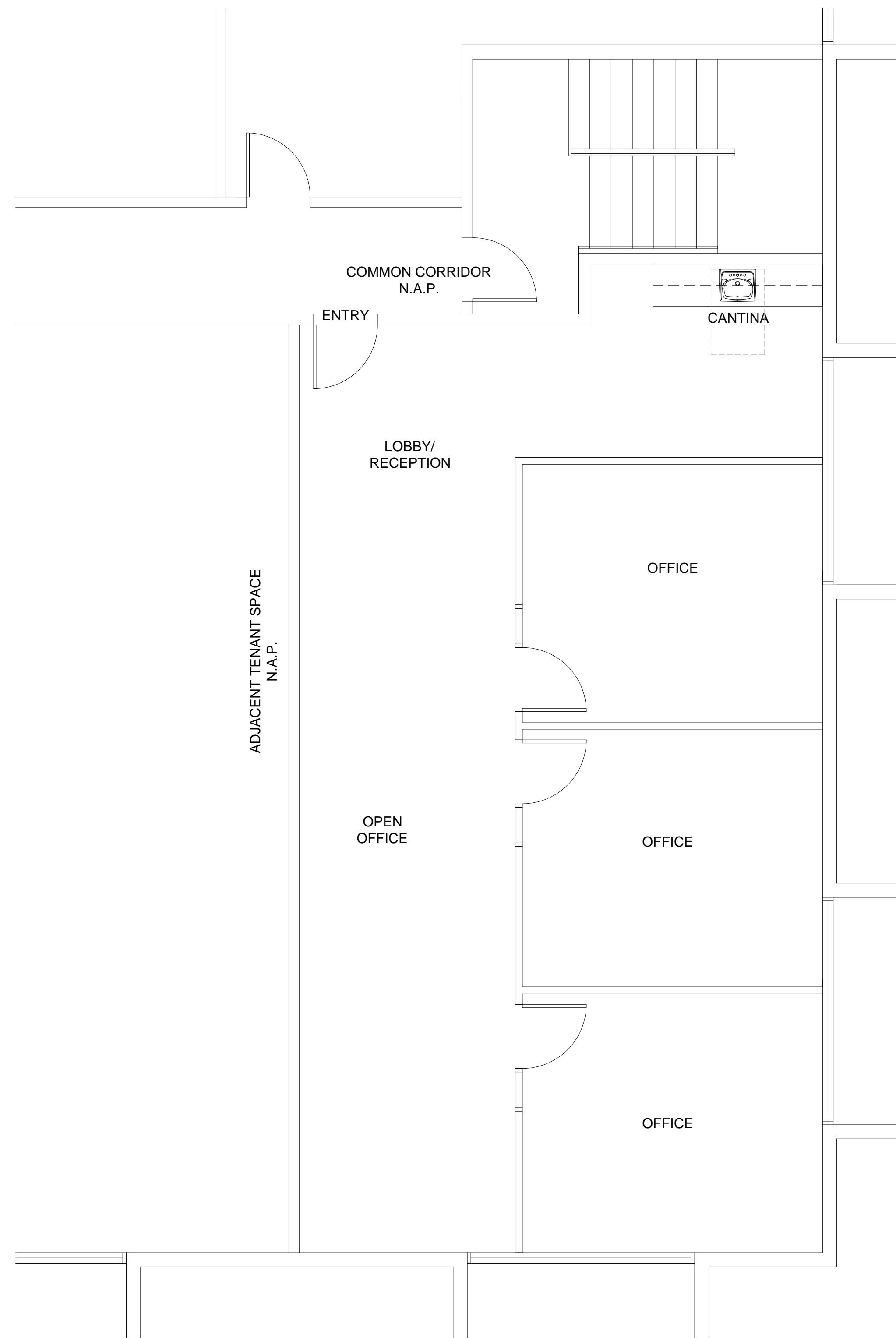


NOTICE

THESE MODIFIED OR OTHER DRAWINGS HAVE BEEN PREPARED, IN WHOLE OR IN PART, ON THE BASIS OF INFORMATION COMPILED AND FURNISHED BY OTHERS UNDER AGREEMENT WITH THE OWNER OF THE PROJECT. e3 ARCHITECTURE IS NOT RESPONSIBLE FOR ANY ERRORS OR OMISSIONS WHICH HAVE BEEN INCORPORATED INTO THIS DOCUMENT AS A RESULT. CAREFUL EXAMINATION OF ACTUAL CONSTRUCTION SHOULD BE UNDERTAKEN PRIOR TO EXCAVATION, CUTTING, MODIFICATION, OR CONNECTION OF SUBSEQUENT CONSTRUCTION.



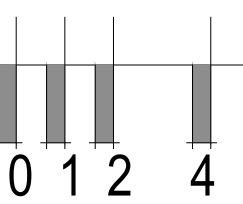
6363 PECOS, SUITE #212

SUITE 212

(LOAD FACTOR: 1.1589)

RSF: +/- 1,297

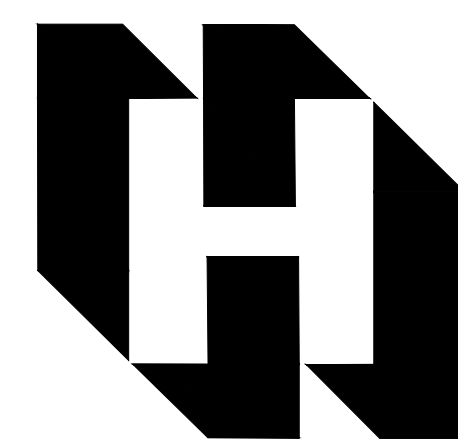
north



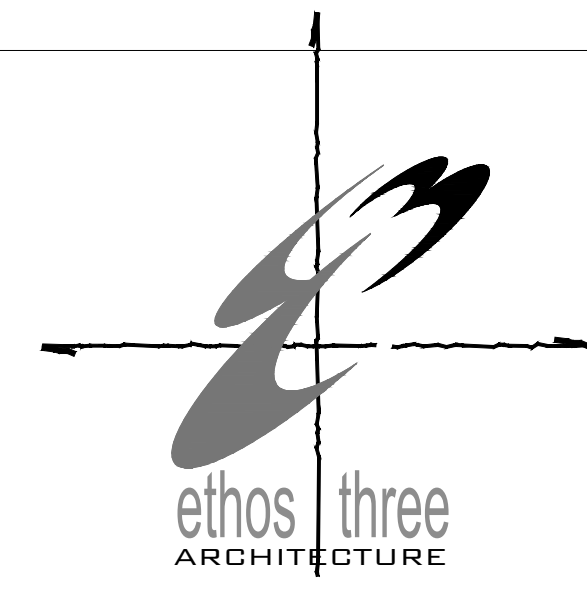
JOB NUMBER - 2016358

6363 Pecos Drive
Las Vegas, NV 89120

A DEVELOPMENT BY:



HARSCH
INVESTMENT PROPERTIES LLC



SPACE:
212