



**BOOSALIS**  
PROPERTIES

REAL ESTATE INVESTMENT AND MANAGEMENT

## FOR SALE – 5.23 ACRES 0 & 207 SUMMIT DRIVE, FRONT ROYAL, VA 22630



### PROPERTY SUMMARY

FOR SALE – Comprised of two parcels, this 5.23 acre property sits directly on John Marshall Hwy. (15,000 ADT) with approximately 225' of main road frontage. Master planned to allow for **moderate-density** suburban development, including **townhomes**, as well as a limited number of **commercial** and **industrial** uses.

### OFFERING SUMMARY

<b>ACRES:</b>	5.23	<b>SUBMARKET:</b>	Warren County
<b>ZONING:</b>	Master Planned for Moderate Density	<b>PRICE:</b>	\$1,200,000
<b>MARKET:</b>	Washington DC	<b>PARCEL ID:</b>	20A162 21 (2.17 ac) 20A162 18A (3.06 ac)

### LOCATION OVERVIEW

This is a rare find along a major artery to Front Royal, VA. Thousands of commuters travel between Warren County, Rappahannock County and Paige County each day.

Within proximity to I-66 and just minutes away from an abundance of local retailers, restaurants, schools and Warren Memorial Hospital and the northern entrance to Skyline Drive.

The town of Front Royal has an updated comprehensive plan to include 2-4 stories of hotels, multifamily residential and mixed-use commercial.

## FOR MORE INFORMATION

**MELANIE NOBRIGA**  
Senior Operations Manager & Agent  
melanie@boosalisproperties.com  
703.494.7691 (o) | 808.937.9417 (c)

**THOMAS VELTSISTAS**  
Commercial Agent  
thomas@boosalisproperties.com  
703.494.7691 (o) | 703.628.8978 (c)

**GEORGE BOOSALIS**  
President/Principal Broker  
george@boosalisproperties.com  
703.494.7691 (o)

**BOOSALIS PROPERTIES** | 13562 Richmond Highway, Suite 100 | Woodbridge, VA 22191 | [www.BoosalisProperties.com](http://www.BoosalisProperties.com)

This information has been obtained through sources deemed reliable, but accuracy cannot be guaranteed.



**BOOSALIS**  
PROPERTIES

REAL ESTATE INVESTMENT AND MANAGEMENT

**FOR SALE – 5.23 ACRES**  
**0 & 207 SUMMIT DRIVE, FRONT ROYAL, VA 22630**

**PROPERTY OVERVIEW**



## FOR MORE INFORMATION

**MELANIE NOBRIGA**  
Senior Operations Manager & Agent  
melanie@boosalisproperties.com  
703.494.7691 (o) | 808.937.9417 (c)

**THOMAS VELTSISTAS**  
Commercial Agent  
thomas@boosalisproperties.com  
703.494.7691 (o) | 703.628.8978 (c)

**GEORGE BOOSALIS**  
President/Principal Broker  
george@boosalisproperties.com  
703.494.7691 (o)

**BOOSALIS PROPERTIES** | 13562 Richmond Highway, Suite 100 | Woodbridge, VA 22191 | [www.BoosalisProperties.com](http://www.BoosalisProperties.com)

This information has been obtained through sources deemed reliable, but accuracy cannot be guaranteed.



**BOOSALIS**  
PROPERTIES

REAL ESTATE INVESTMENT AND MANAGEMENT

**FOR SALE – 5.23 ACRES**  
**0 & 207 SUMMIT DRIVE, FRONT ROYAL, VA 22630**

**PICTURES**



**FOR MORE INFORMATION**

**MELANIE NOBRIGA**  
Senior Operations Manager & Agent  
melanie@boosalisproperties.com  
703.494.7691 (o) | 808.937.9417 (c)

**THOMAS VELTSISTAS**  
Commercial Agent  
thomas@boosalisproperties.com  
703.494.7691 (o) | 703.628.8978 (c)

**GEORGE BOOSALIS**  
President/Principal Broker  
george@boosalisproperties.com  
703.494.7691 (o)

**BOOSALIS PROPERTIES** | 13562 Richmond Highway, Suite 100 | Woodbridge, VA 22191 | [www.BoosalisProperties.com](http://www.BoosalisProperties.com)

This information has been obtained through sources deemed reliable, but accuracy cannot be guaranteed.



**BOOSALIS**  
PROPERTIES

REAL ESTATE INVESTMENT AND MANAGEMENT

**FOR SALE – 5.23 ACRES**  
**0 & 207 SUMMIT DRIVE, FRONT ROYAL, VA 22630**

**PROPERTY OVERVIEW**



**FOR MORE INFORMATION**

**MELANIE NOBRIGA**  
Senior Operations Manager & Agent  
melanie@boosalisproperties.com  
703.494.7691 (o) | 808.937.9417 (c)

**THOMAS VELTSISTAS**  
Commercial Agent  
thomas@boosalisproperties.com  
703.494.7691 (o) | 703.628.8978 (c)

**GEORGE BOOSALIS**  
President/Principal Broker  
george@boosalisproperties.com  
703.494.7691 (o)

**BOOSALIS PROPERTIES** | 13562 Richmond Highway, Suite 100 | Woodbridge, VA 22191 | [www.BoosalisProperties.com](http://www.BoosalisProperties.com)

This information has been obtained through sources deemed reliable, but accuracy cannot be guaranteed.



**BOOSALIS**  
PROPERTIES

REAL ESTATE INVESTMENT AND MANAGEMENT

**FOR SALE - 5.23 ACRES**  
**0 & 207 SUMMIT DRIVE, FRONT ROYAL, VA 22630**

**AERIAL**



**FOR MORE INFORMATION**

**MELANIE NOBRIGA**  
Senior Operations Manager & Agent  
melanie@boosalisproperties.com  
703.494.7691 (o) | 808.937.9417 (c)

**THOMAS VELTSISTAS**  
Commercial Agent  
thomas@boosalisproperties.com  
703.494.7691 (o) | 703.628.8978 (c)

**GEORGE BOOSALIS**  
President/Principal Broker  
george@boosalisproperties.com  
703.494.7691 (o)

**BOOSALIS PROPERTIES** | 13562 Richmond Highway, Suite 100 | Woodbridge, VA 22191 | [www.BoosalisProperties.com](http://www.BoosalisProperties.com)

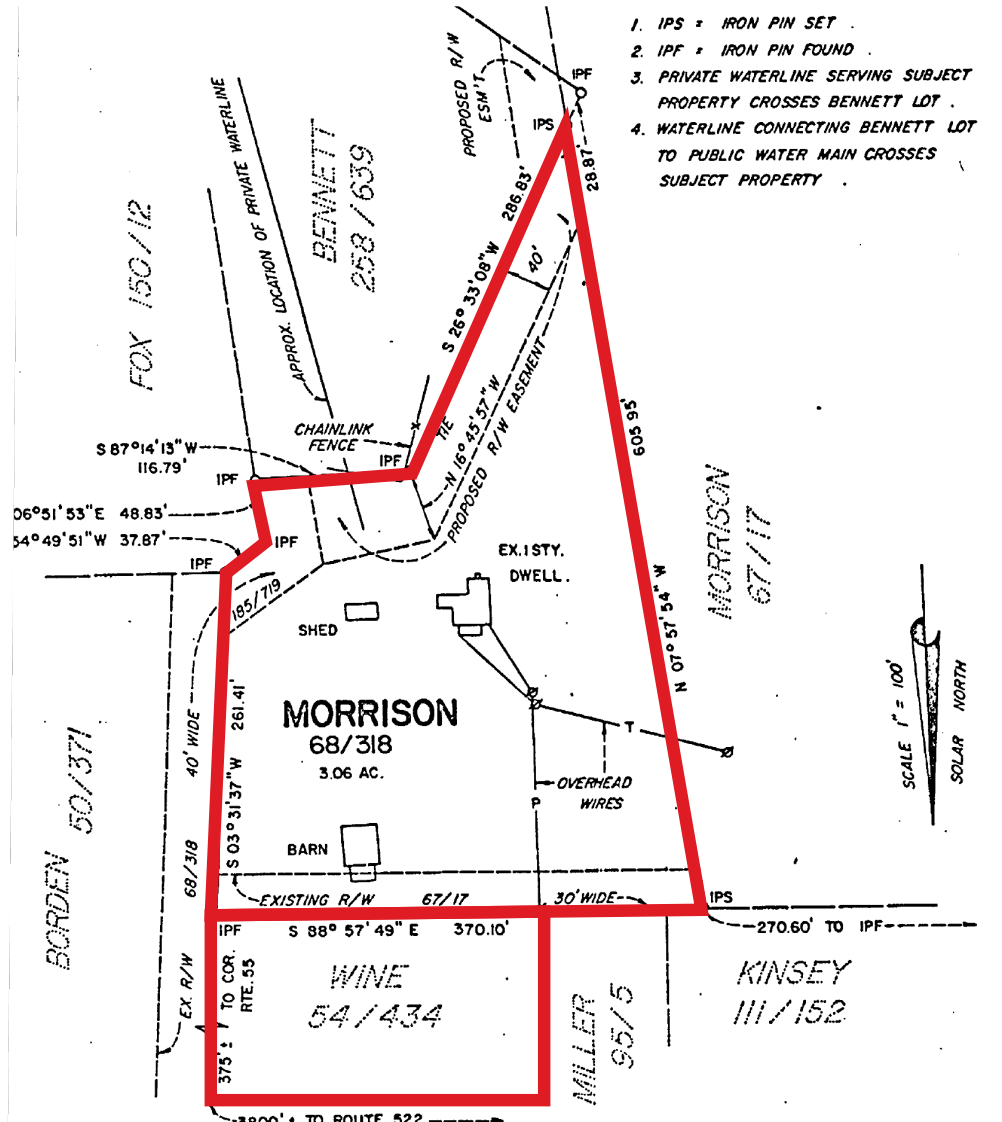
This information has been obtained through sources deemed reliable, but accuracy cannot be guaranteed.



**BOOSALIS**  
PROPERTIES

REAL ESTATE INVESTMENT AND MANAGEMENT

**FOR SALE - 5.23 ACRES**  
**0 & 207 SUMMIT DRIVE, FRONT ROYAL, VA 22630**



**FOR MORE INFORMATION**

**MELANIE NOBRIGA**  
Senior Operations Manager & Agent  
melanie@boosalisproperties.com  
703.494.7691 (o) | 808.937.9417 (c)

**THOMAS VELTSISTAS**  
Commercial Agent  
thomas@boosalisproperties.com  
703.494.7691 (o) | 703.628.8978 (c)

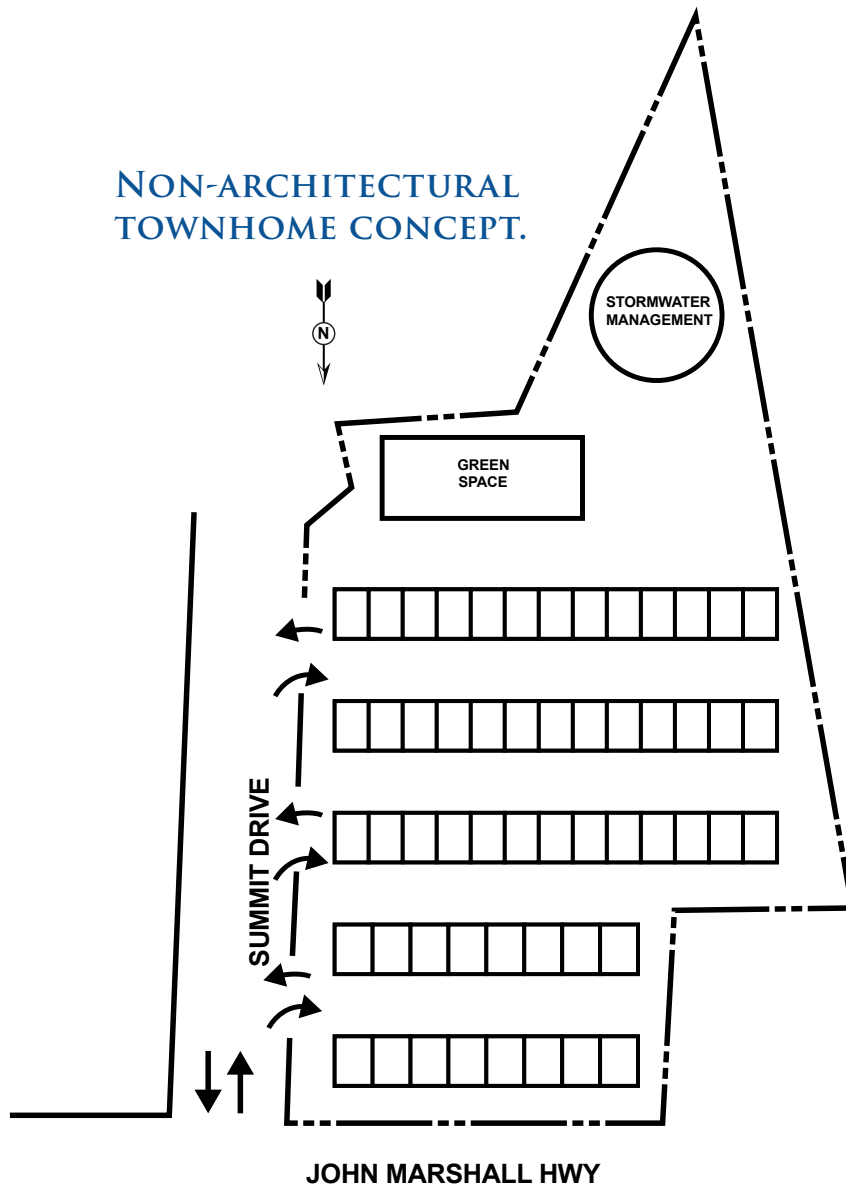
**GEORGE BOOSALIS**  
President/Principal Broker  
george@boosalisproperties.com  
703.494.7691 (o)



**BOOSALIS**  
PROPERTIES

REAL ESTATE INVESTMENT AND MANAGEMENT

**FOR SALE – 5.23 ACRES**  
**0 & 207 SUMMIT DRIVE, FRONT ROYAL, VA 22630**



**FOR MORE INFORMATION**

**MELANIE NOBRIGA**  
Senior Operations Manager & Agent  
melanie@boosalisproperties.com  
703.494.7691 (o) | 808.937.9417 (c)

**THOMAS VELTSISTAS**  
Commercial Agent  
thomas@boosalisproperties.com  
703.494.7691 (o) | 703.628.8978 (c)

**GEORGE BOOSALIS**  
President/Principal Broker  
george@boosalisproperties.com  
703.494.7691 (o)

**BOOSALIS PROPERTIES** | 13562 Richmond Highway, Suite 100 | Woodbridge, VA 22191 | [www.BoosalisProperties.com](http://www.BoosalisProperties.com)

This information has been obtained through sources deemed reliable, but accuracy cannot be guaranteed.

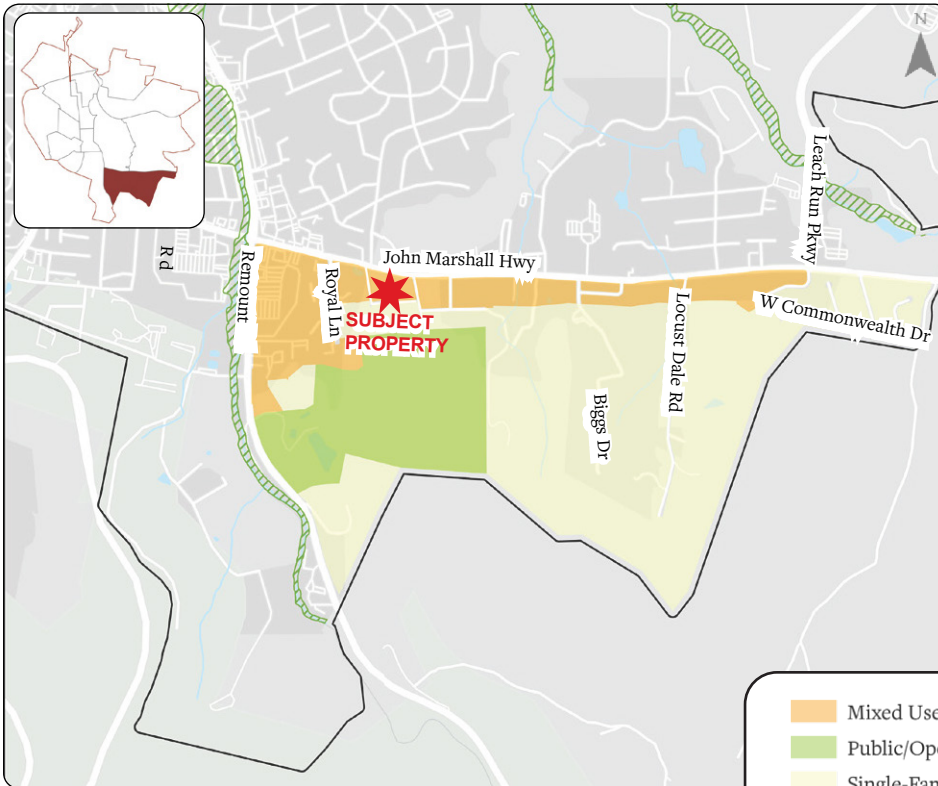


# BOOSALIS PROPERTIES

REAL ESTATE INVESTMENT AND MANAGEMENT

## FOR SALE – 5.23 ACRES 0 & 207 SUMMIT DRIVE, FRONT ROYAL, VA 22630

### FRONT ROYAL COMPREHENSIVE PLAN



#### AREA DESCRIPTION

- The South East Planning Area consists of 543.8 acres.
- The planning area boundary begins in the east at the Town/county boundary near Heritage Subdivision and the intersection with Leach Run Parkway.
- The southern boundary follows the Town/County boundary line until reaching Remount Road (Route 522) at the western extent of the planning area.
- The northern boundary is John Marshall Highway.

#### OPPORTUNITIES

- Major arterial streets.
- Views of woodland hillsides.
- Contains a concentrated commercial development focused around the intersection of John Marshall Highway and Remount Road.

Mixed Use Commercial	Floodway Conservation Overlay
Public/Open Space	Front Royal Boundary
Single-Family Residential	

#### ACTION STRATEGIES

- Increase new commercial development along Remount Road, south of Gateway Plaza.
- Where possible, seek to connect existing local streets.
- Support redevelopment and new development of multi-family development.
- Consider the feasibility of extending public water and sewer services to lots currently located on private streets.
- Enhance wayfinding and directional signage.
- Allow mixed-use development in commercial areas, such as residential units on the upper level of buildings. Encourage redevelopment of commercial areas.
- Add a crosswalk/pedestrian infrastructure at the intersection of East Criser Road and Remount Drive.
- Pursue bicycle and pedestrian infrastructure, as well as additional transit service, to ease car congestion on John Marshall Highway. Collaborate with VDOT on roadway modifications for the corridor, as appropriate.

## FOR MORE INFORMATION

**MELANIE NOBRIGA**  
Senior Operations Manager & Agent  
melanie@boosalisproperties.com  
703.494.7691 (o) | 808.937.9417 (c)

**THOMAS VELTSISTAS**  
Commercial Agent  
thomas@boosalisproperties.com  
703.494.7691 (o) | 703.628.8978 (c)

**GEORGE BOOSALIS**  
President/Principal Broker  
george@boosalisproperties.com  
703.494.7691 (o)

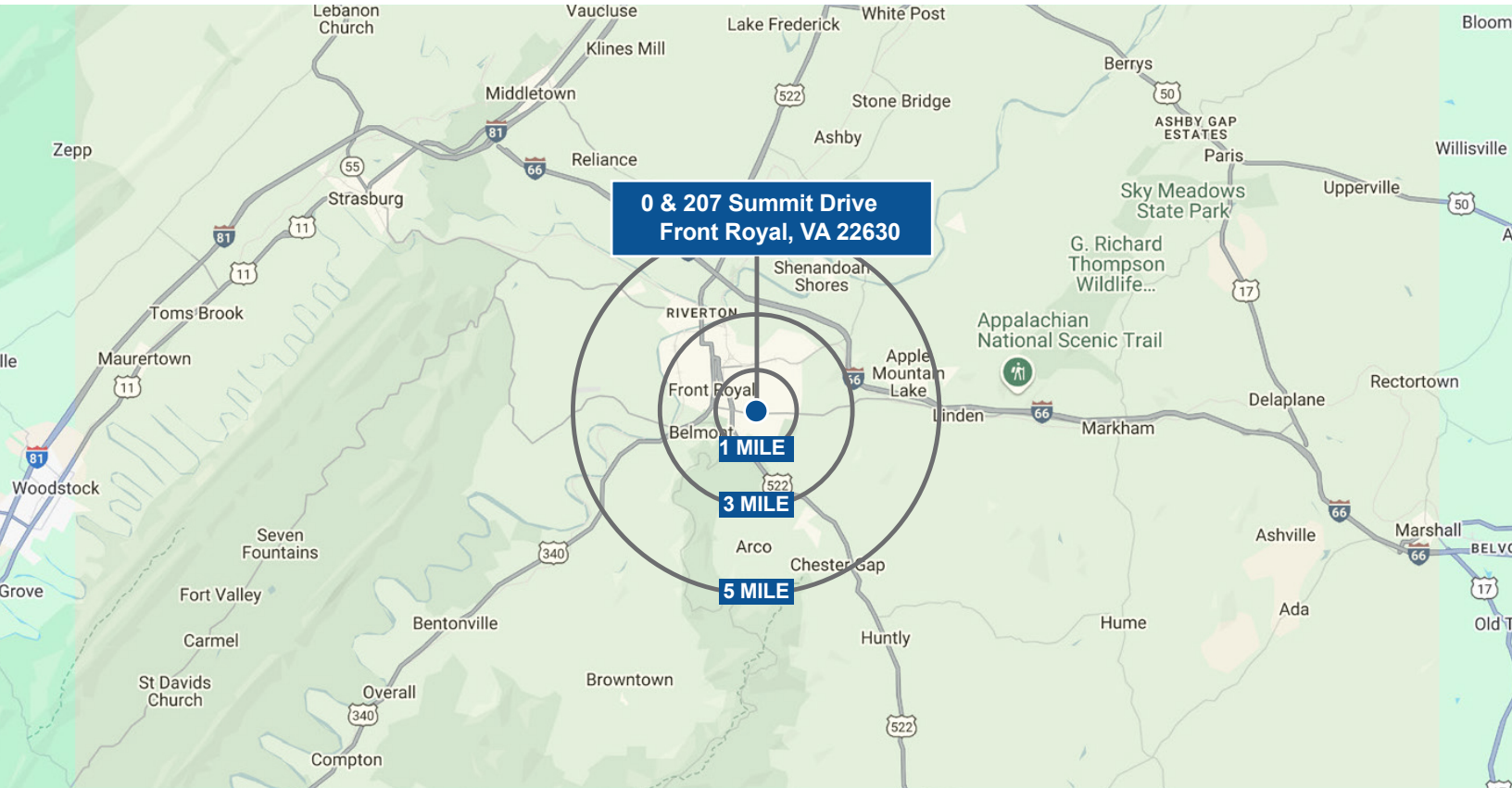


# BOOSALIS PROPERTIES

REAL ESTATE INVESTMENT AND MANAGEMENT

## FOR SALE – 5.23 ACRES 0 & 207 SUMMIT DRIVE, FRONT ROYAL, VA 22630

### DEMOGRAPHICS



POPULATION	1 MILE	3 MILES	5 MILES
Population	6,110	16,313	27,757
Households	2,491	6,389	10,542
Average HH Income	\$85,258	\$88,304	\$93,366
Median Home Value	\$259,050	\$268,983	\$286,175

## FOR MORE INFORMATION

**MELANIE NOBRIGA**  
Senior Operations Manager & Agent  
melanie@boosalisproperties.com  
703.494.7691 (o) | 808.937.9417 (c)

**THOMAS VELTSISTAS**  
Commercial Agent  
thomas@boosalisproperties.com  
703.494.7691 (o) | 703.628.8978 (c)

**GEORGE BOOSALIS**  
President/Principal Broker  
george@boosalisproperties.com  
703.494.7691 (o)