

TEUTOPOLIS INDUSTRIAL CENTER

KO-LINKS LLC

515 W Main Street
Teutopolis, IL 62467
For Sale or For Lease

UPLAND
REAL ESTATE GROUP, INC.

\$1,000,000 PRICE REDUCTION

50 South 6th Street
Suite 1418
Minneapolis, MN
612.332.6600
www.upland.com

JOSH HUEMPFNER
612.465.8522
JOSH@UPLAND.COM

KIRBY PIERI
612.465.8523
KIRBY@UPLAND.COM

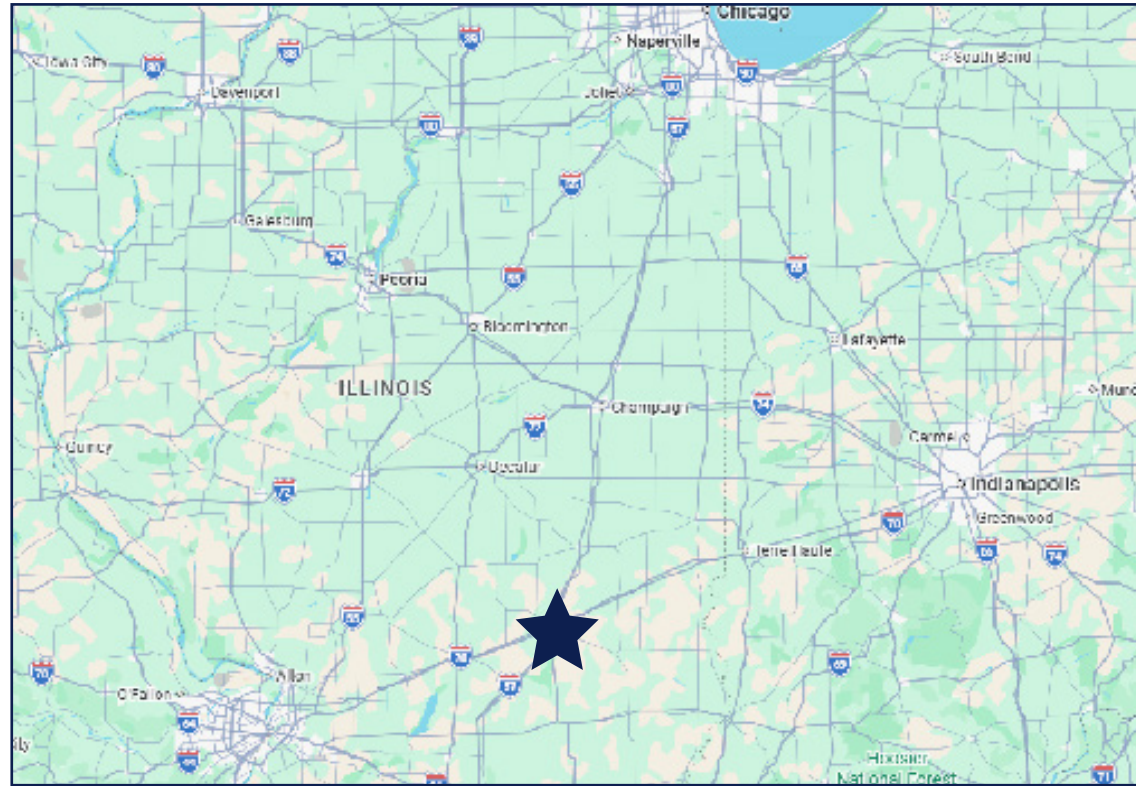
ROB KOST, CCIM
612.465.8530
ROB@UPLAND.COM

*Look Upland. Where Properties
& People Unite!*

IL Designated
Broker & Project Broker of Record

KO-LINKS LLC

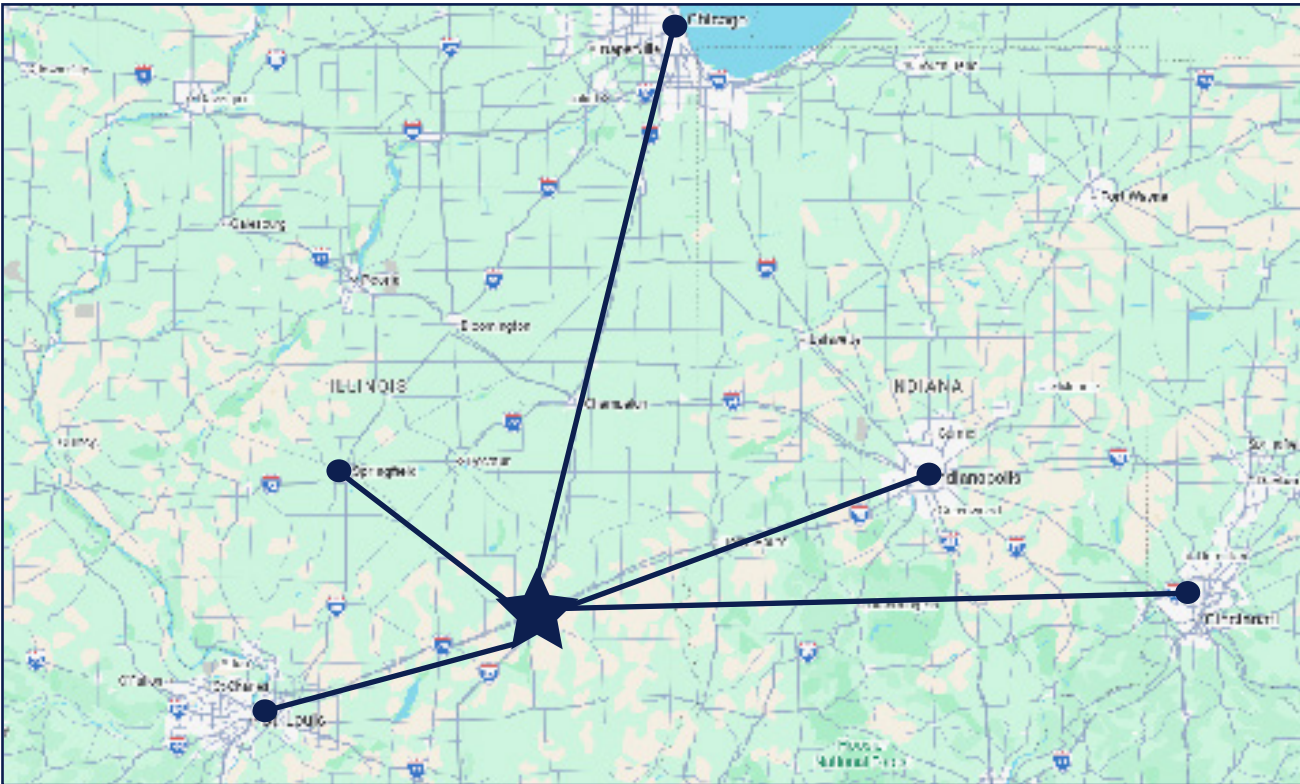
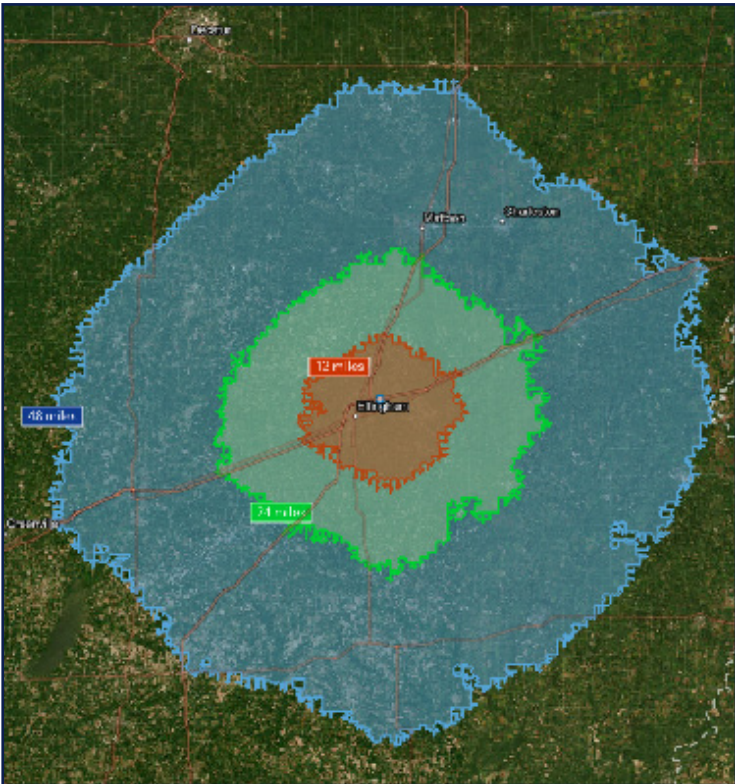
ADDRESS	515 W Main Street
CITY, STATE	Teutopolis, IL 62467
SPACE AVAILABLE	90,000 SF
LOT SIZE	7.69 AC
SALE PRICE	\$2,900,000
LEASE RATE	\$3.75 PSF NNN
YEAR BUILT	1966
COUNTY	Effingham
ZONING	TM - Teutopolis Industrial



HIGHLIGHTS

- Large scale industrial facility available for sale or lease
- Designed for manufacturing, processing, or bulk storage operations
- Efficient site size supporting truck access and yard use
- Ideal for equipment-driven or production focused users
- Average household income of \$124,658 in a 3-mile radius

2025 DEMOGRAPHICS	1-MILE RADIUS	3-MILE RADIUS	5-MILE RADIUS
POPULATION	1,662	4,975	16,357
MEDIAN AGE	37.1	39.0	39.7
MEDIAN HH INCOME	\$95,259	\$96,357	\$73,018
AVERAGE HH INCOME	\$121,377	\$124,658	\$95,677



Distances

Springfield, IL	85 Miles
St. Louis, MO	100 Miles
Indianapolis, IN	130 Miles
Chicago, IL	210 Miles
Louisville, KY	195 Miles

2025 DEMOGRAPHICS	12-MILE DRIVE TIME	24-MILE DRIVE TIME	48-MILE DRIVE TIME
POPULATION	26,634	55,819	223,678
MEDIAN HH INCOME	\$77,707	\$74,607	\$66,586
AVERAGE HH INCOME	\$100,345	\$92,588	\$84,569
MEDIAN AGE	40.7	42.0	41.9
MEDIAN HOME VALUE	\$233,576	\$188,455	\$156,556

1) Village of Teutopolis Incentives

a) The Village manages two primary Tax Increment Financing (TIF) districts. TIF funds are used to offset the costs of private development that benefits the community.

1. TIF Districts: * West Main Street TIF District

* Central TIF District

2. Eligible Costs: Companies can apply for reimbursement for “redevelopment project costs,” which often include:

* Land acquisition and site preparation.

* Rehabilitation or renovation of existing buildings.

* Infrastructure improvements (sewers, water lines, roads).

* Professional fees (legal, engineering, and architectural).

3. Application Process: Private developers must submit an application to the Village Board for approval before the project begins.

2) Effingham County Incentives

a) The location is in the TIF district, but not currently in the Effingham County Enterprise Zone. The zone can be expanded, usually project driven.

NOTE: You cannot “double-dip” by using both Property Tax Abatements and TIF on the same parcel of land. Usually, if a property is in a TIF district, the TIF benefits take precedence over the Enterprise Zone property tax abatement.

b) Effingham Regional Growth Alliance (ERGA): This entity provides access to a Revolving Loan Fund for fixed assets or working capital and can help coordinate customized workforce training through Lake Land College.

3) State of Illinois Incentives

a) The Illinois Department of Commerce and Economic Opportunity (DCEO) offers several “spotlight” programs for companies relocating to the state.

1. High-Impact Tax Credits

* EDGE Program (Economic Development for a Growing Economy): Provides annual corporate income tax credits equal to a percentage of the state income tax withheld from the salaries of new employees. This is the state’s primary tool for competing with other states for relocation projects.

* Advancing Innovative Manufacturing (AIM) Tax Credit: A newer 2026-focused credit offering up to 7% credit on capital investments (minimum \$10M) for companies modernizing or automating manufacturing processes.

b) Workforce & Infrastructure

* Illinois Works/Apprenticeship Credits: Tax credits of up to \$3,500 per apprentice for companies that invest in qualified training programs.

* Prime Sites Capital Grant: Large-scale grants for companies making significant capital investments that commit to major job creation.

ILLINOIS RAILROAD MAP

2021

ILLINOIS DEPARTMENT OF TRANSPORTATION
OFFICE OF PLANNING AND PROGRAMMING

IN COOPERATION WITH
ILLINOIS COMMERCE COMMISSION

Illinois Department of Transportation

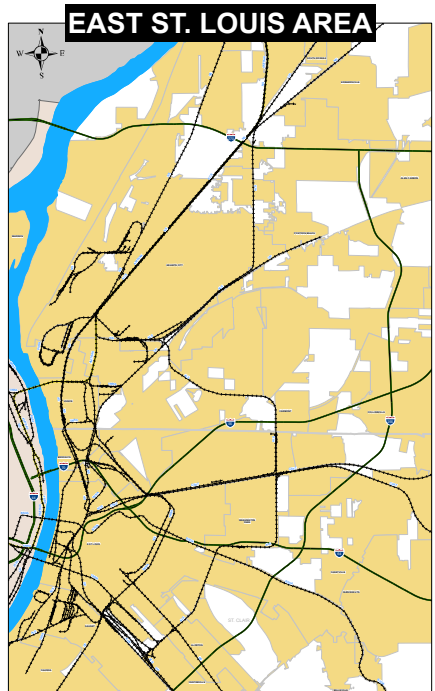
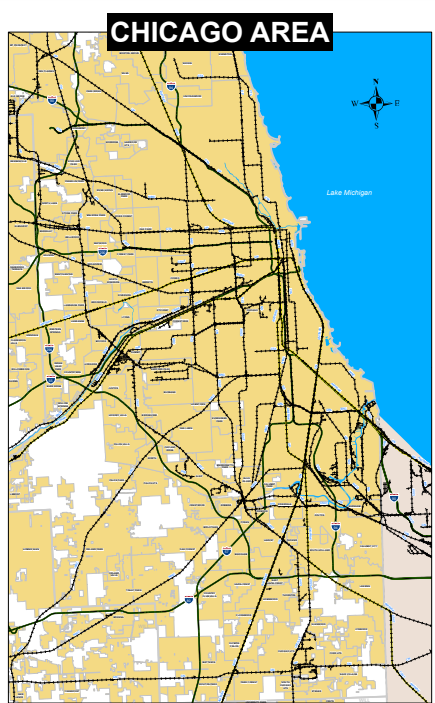
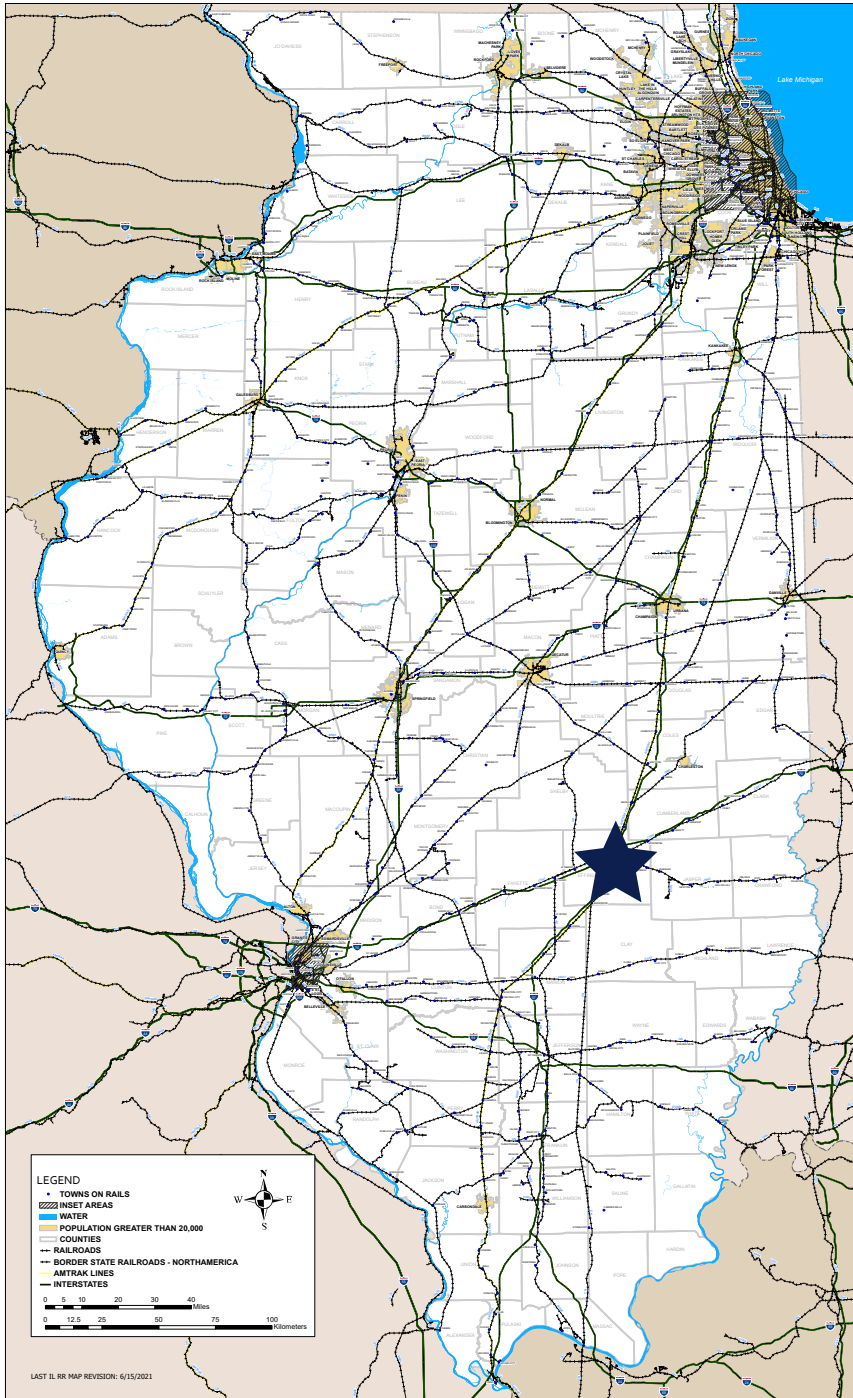
Mapping & Information Systems

DATA SOURCE:
ILLINOIS DEPARTMENT OF TRANSPORTATION
LATEST DEVELOPMENT OF TRAIN
MILES AND STATIONS FROM
BNSF NATIONAL ETAL (2017) (BNSF/NA/ETAL/2017)

RAILROADS

CODE	RAILROAD NAME
001	Illinois and Southern Railway
002	Illinois Central Railroad
003	Illinois Central North Branch Railroad
004	Illinois Central Western Railroad
005	Illinois Central Eastern Railroad
006	Illinois Central Southern Railroad
007	Illinois Central Chicago & North Branch Railroad
008	Illinois Central Chicago & Eastern Railroad
009	Illinois Central Chicago & Western Railroad
010	Illinois Central Chicago & Southern Railroad
011	Illinois Central Chicago & North Branch Railroad
012	Illinois Central Chicago & Eastern Railroad
013	Illinois Central Chicago & Western Railroad
014	Illinois Central Chicago & Southern Railroad
015	Illinois Central Chicago & North Branch Railroad
016	Illinois Central Chicago & Eastern Railroad
017	Illinois Central Chicago & Western Railroad
018	Illinois Central Chicago & Southern Railroad
019	Illinois Central Chicago & North Branch Railroad
020	Illinois Central Chicago & Eastern Railroad
021	Illinois Central Chicago & Western Railroad
022	Illinois Central Chicago & Southern Railroad
023	Illinois Central Chicago & North Branch Railroad
024	Illinois Central Chicago & Eastern Railroad
025	Illinois Central Chicago & Western Railroad
026	Illinois Central Chicago & Southern Railroad
027	Illinois Central Chicago & North Branch Railroad
028	Illinois Central Chicago & Eastern Railroad
029	Illinois Central Chicago & Western Railroad
030	Illinois Central Chicago & Southern Railroad
031	Illinois Central Chicago & North Branch Railroad
032	Illinois Central Chicago & Eastern Railroad
033	Illinois Central Chicago & Western Railroad
034	Illinois Central Chicago & Southern Railroad
035	Illinois Central Chicago & North Branch Railroad
036	Illinois Central Chicago & Eastern Railroad
037	Illinois Central Chicago & Western Railroad
038	Illinois Central Chicago & Southern Railroad
039	Illinois Central Chicago & North Branch Railroad
040	Illinois Central Chicago & Eastern Railroad
041	Illinois Central Chicago & Western Railroad
042	Illinois Central Chicago & Southern Railroad
043	Illinois Central Chicago & North Branch Railroad
044	Illinois Central Chicago & Eastern Railroad
045	Illinois Central Chicago & Western Railroad
046	Illinois Central Chicago & Southern Railroad
047	Illinois Central Chicago & North Branch Railroad
048	Illinois Central Chicago & Eastern Railroad
049	Illinois Central Chicago & Western Railroad
050	Illinois Central Chicago & Southern Railroad
051	Illinois Central Chicago & North Branch Railroad
052	Illinois Central Chicago & Eastern Railroad
053	Illinois Central Chicago & Western Railroad
054	Illinois Central Chicago & Southern Railroad
055	Illinois Central Chicago & North Branch Railroad
056	Illinois Central Chicago & Eastern Railroad
057	Illinois Central Chicago & Western Railroad
058	Illinois Central Chicago & Southern Railroad
059	Illinois Central Chicago & North Branch Railroad
060	Illinois Central Chicago & Eastern Railroad
061	Illinois Central Chicago & Western Railroad
062	Illinois Central Chicago & Southern Railroad
063	Illinois Central Chicago & North Branch Railroad
064	Illinois Central Chicago & Eastern Railroad
065	Illinois Central Chicago & Western Railroad
066	Illinois Central Chicago & Southern Railroad
067	Illinois Central Chicago & North Branch Railroad
068	Illinois Central Chicago & Eastern Railroad
069	Illinois Central Chicago & Western Railroad
070	Illinois Central Chicago & Southern Railroad
071	Illinois Central Chicago & North Branch Railroad
072	Illinois Central Chicago & Eastern Railroad
073	Illinois Central Chicago & Western Railroad
074	Illinois Central Chicago & Southern Railroad
075	Illinois Central Chicago & North Branch Railroad
076	Illinois Central Chicago & Eastern Railroad
077	Illinois Central Chicago & Western Railroad
078	Illinois Central Chicago & Southern Railroad
079	Illinois Central Chicago & North Branch Railroad
080	Illinois Central Chicago & Eastern Railroad
081	Illinois Central Chicago & Western Railroad
082	Illinois Central Chicago & Southern Railroad
083	Illinois Central Chicago & North Branch Railroad
084	Illinois Central Chicago & Eastern Railroad
085	Illinois Central Chicago & Western Railroad
086	Illinois Central Chicago & Southern Railroad
087	Illinois Central Chicago & North Branch Railroad
088	Illinois Central Chicago & Eastern Railroad
089	Illinois Central Chicago & Western Railroad
090	Illinois Central Chicago & Southern Railroad
091	Illinois Central Chicago & North Branch Railroad
092	Illinois Central Chicago & Eastern Railroad
093	Illinois Central Chicago & Western Railroad
094	Illinois Central Chicago & Southern Railroad
095	Illinois Central Chicago & North Branch Railroad
096	Illinois Central Chicago & Eastern Railroad
097	Illinois Central Chicago & Western Railroad
098	Illinois Central Chicago & Southern Railroad
099	Illinois Central Chicago & North Branch Railroad
100	Illinois Central Chicago & Eastern Railroad

Illinois Amtrak Routes

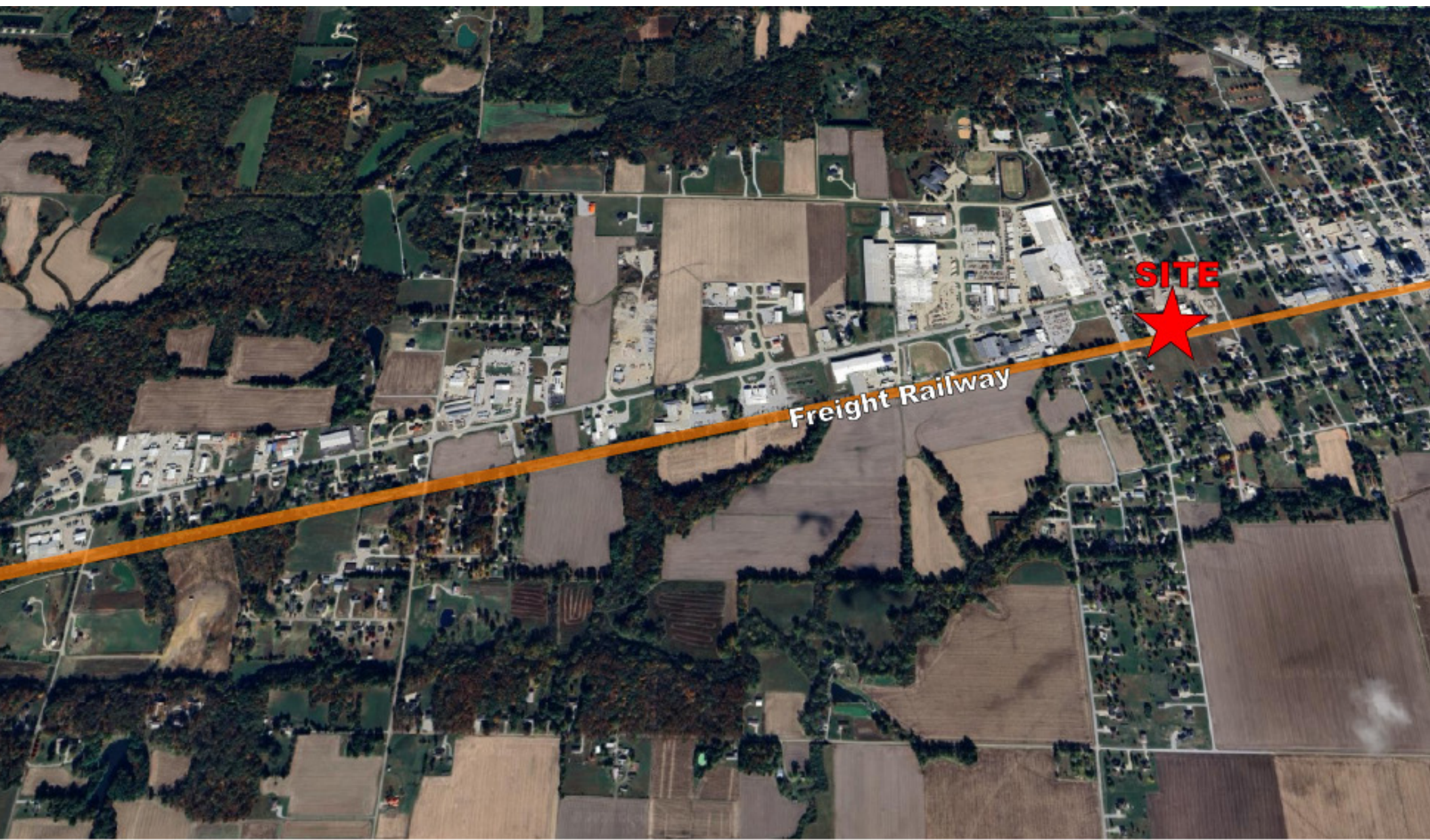


LEGEND

- TOWNS ON RAILS
- INSET AREAS
- WATER
- POPULATION GREATER THAN 20,000
- COUNTIES
- RAILROADS
- BORDER STATE RAILROADS - NORTHAMERICA
- AMTRAK LINES
- INTERSTATES

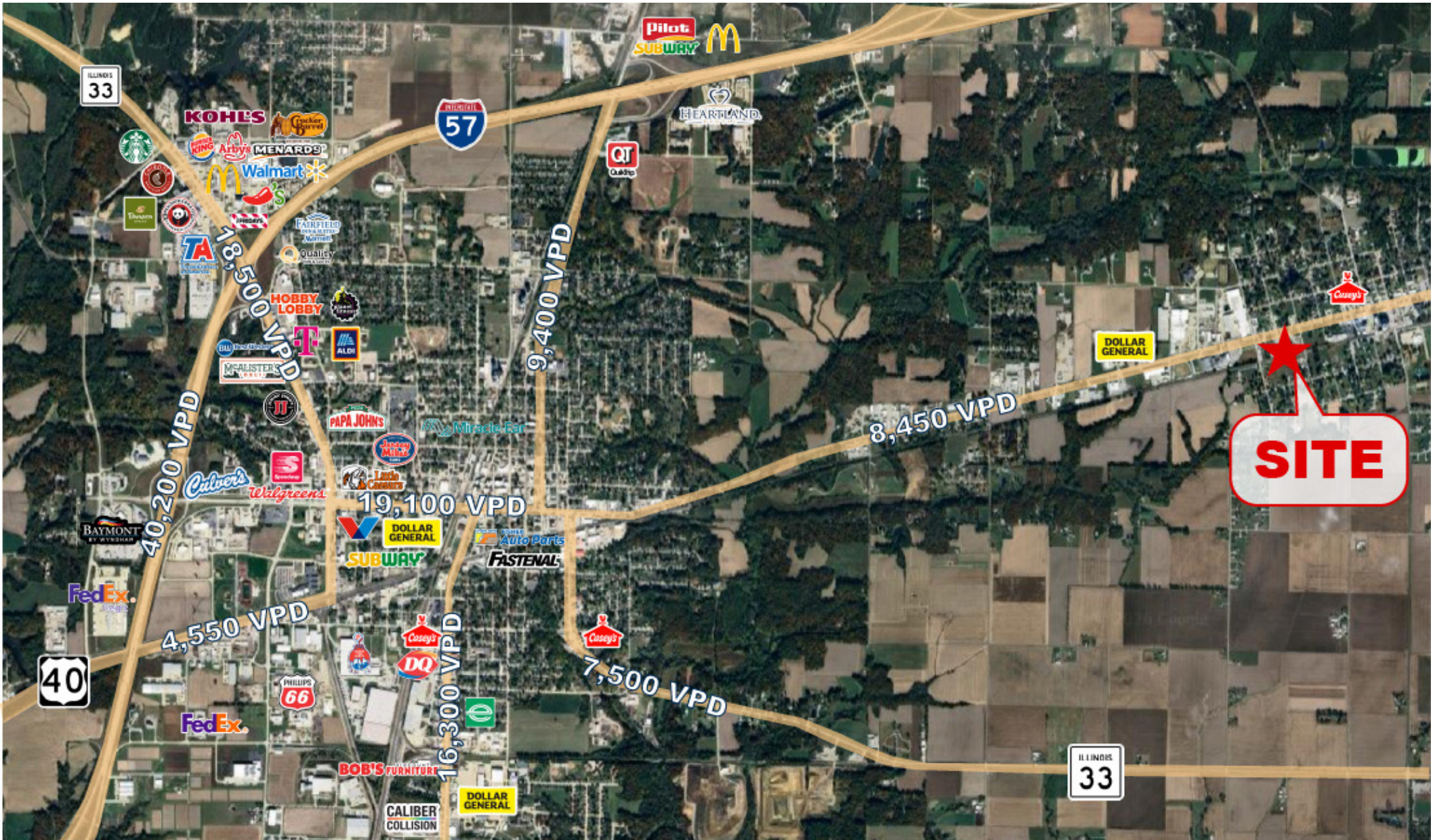
0 5 10 20 30 40 Miles
0 12.5 25 50 75 100 Kilometers

LAST IL RR MAP REVISION: 6/15/2021





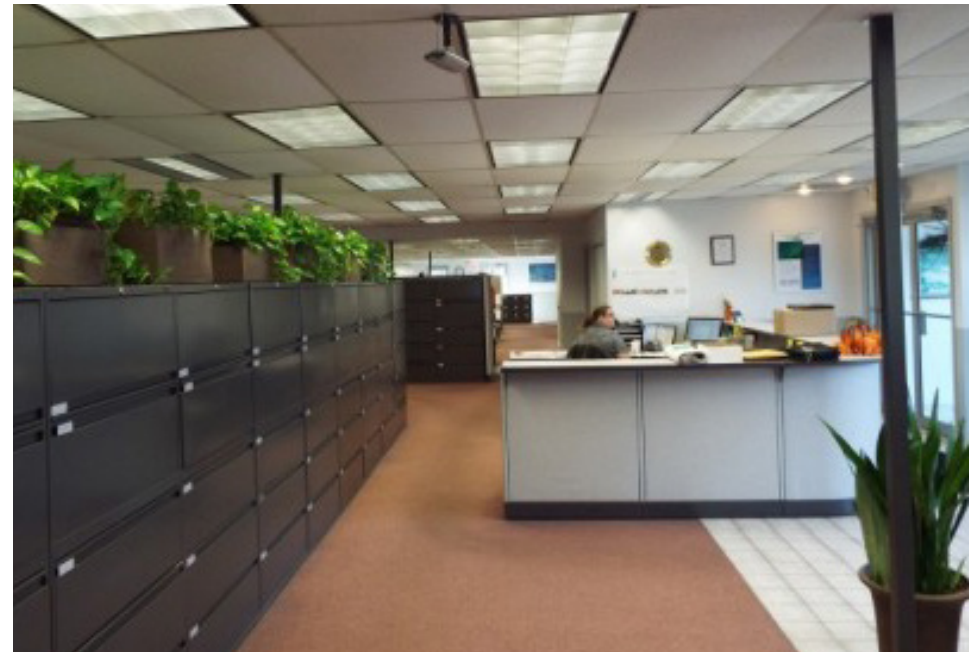
Freight Railway













KO-LINKS LLC

UPLAND

REAL ESTATE GROUP, INC.

50 South 6th Street
Suite 1418
Minneapolis, MN
612.332.6600

JOSH HUEMPFNER
612.465.8522
JOSH@UPLAND.COM

KIRBY PIERI
612.465.8523
KIRBY@UPLAND.COM

ROB KOST, CCIM
612.465.8530
ROB@UPLAND.COM

KO-LINKS LLC

THIS INFORMATION HAS BEEN SECURED FROM SOURCES WE BELIEVE TO BE RELIABLE, BUT WE MAKE NO REPRESENTATIONS OR WARRANTIES, EXPRESSED OR IMPLIED, AS TO THE ACCURACY OF THE INFORMATION. REFERENCES TO SQUARE FOOTAGE OR AGE ARE APPROXIMATE. UPLAND HAS NOT REVIEWED OR VERIFIED THIS INFORMATION. BUYER MUST VERIFY THE INFORMATION AND BEARS ALL RISK FOR ANY INACCURACIES.