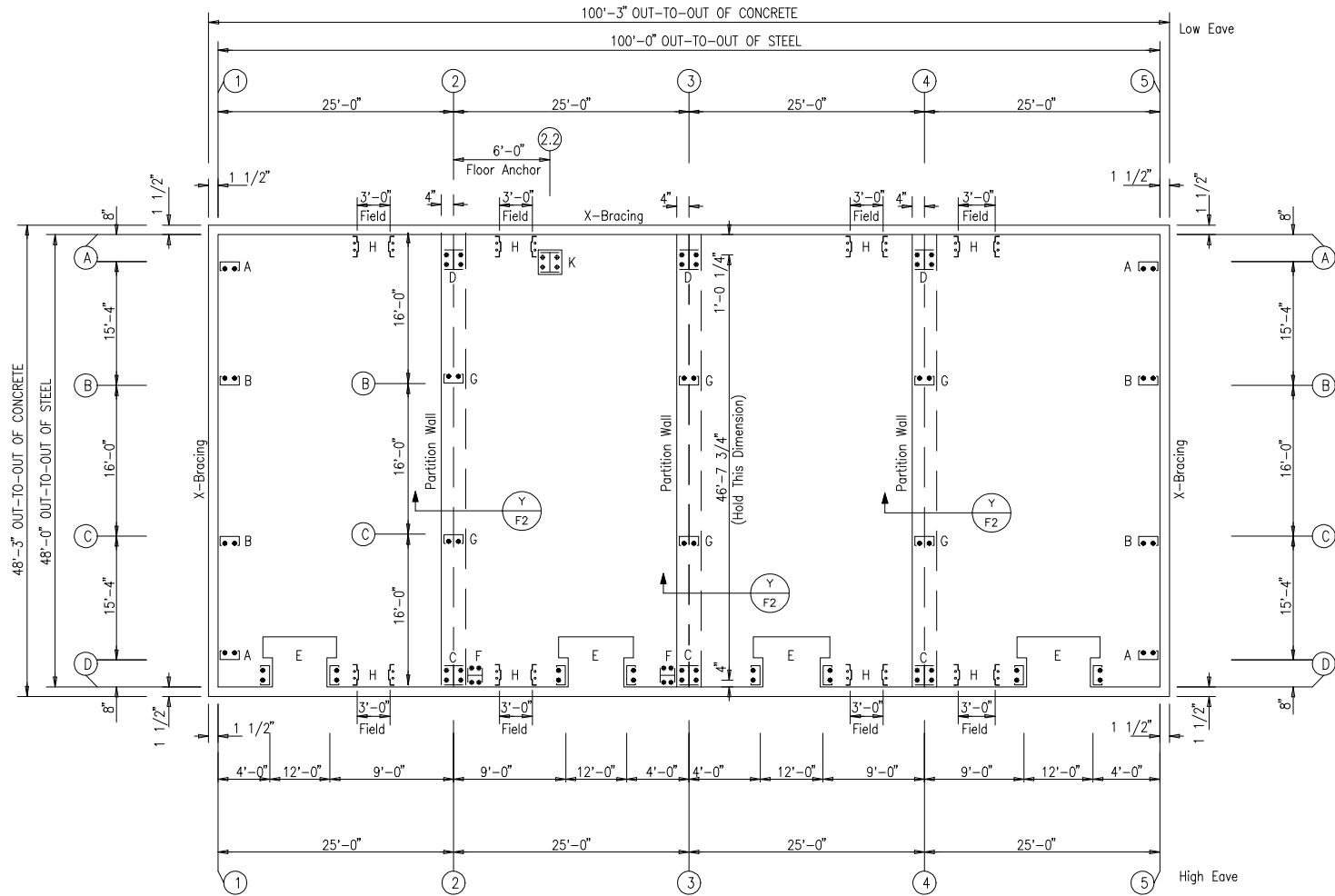


- Dia= 1/2"
- Dia= 5/8"
- ⊕ Dia= 3/4"
- ⊗ Dia= 1"



ANCHOR BOLT PLAN  
NOTE: All Base Plates @ Finished Floor (U.N.)

Date 7/22/25



The Engineer whose seal and signature appear on these documents represents Whirlwind Steel Buildings, Inc., and is not the Engineer of Record for the overall project. The Engineer's responsibility is limited to material designed and manufactured by Whirlwind Steel Buildings, Inc., and excludes part such as doors, windows, foundation design, and erection of the building.

FOR APPROVAL: These drawings, being for approval, are by definition not final and are for conceptual representation only. Their purpose is to confirm the proper interpretation of the project documents. Only drawings issued "For Erector Installation" can be considered complete.

FOR CONSTRUCTION (PENDING): These drawings, being for permit, are by definition not final. Only drawings issued "For Erector Installation" can be considered complete.

FOR ERECTOR INSTALLATION: Final drawings for construction.



ISSUE	DATE	DESCRIPTION	BY	CHK	SHEET DESCRIPTION	TITLE SHEET
0	07.15.25	FOR ERECTOR INSTALLATION	PND	PNC	ANCHOR BOLT PLAN	48'-0" x 100'-0" x 16'-0" X 18'-0"
1	07.21.25	REV. FOR ERECTOR INSTALLATION	PND	PNC		

CUSTOMER: KOLB HWY  
PROJECT REFERENCE: KOLB HWY  
JOB SITE LOCATION: RATHORUM, ID 83858  
LOCALITY COUNTY: KODIEN

OWN: PND  
CHK: PNC  
DATE: 07.21.25  
ENGR: ABO  
JOB NO: 14452-37737  
DWG NO: F1  
ISSUE: 1

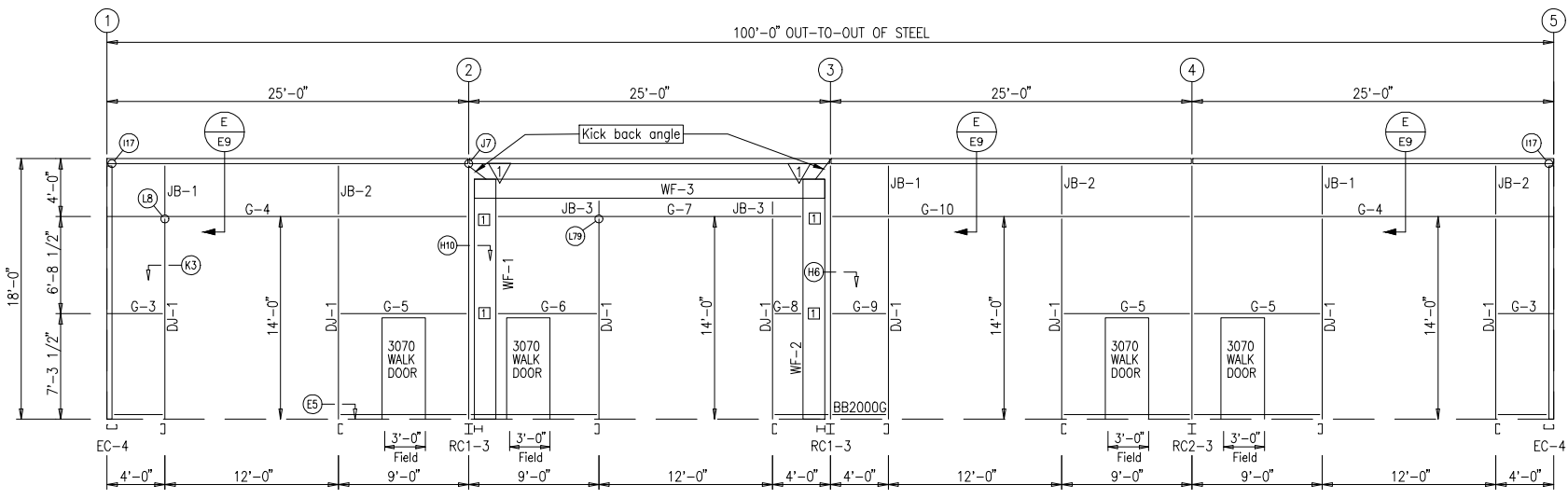
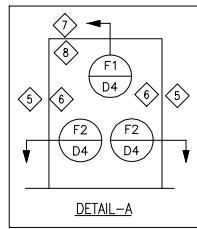
BOLT TABLE				
FRAME LINE D				
LOCATION	QUAN	TYPE	DIA	LENGTH
WF-1 - WF-3	6	A325	1 1/4"	3"
WF-2 - WF-3	6	A325	1 1/4"	3"
WF-1 - RC1-3	8	A325	5/8"	1 3/4"
WF-2 - RC1-3	8	A325	5/8"	1 3/4"

TRIM TABLE - THIS WALL ONLY		
FRAME LINE - D		
ID	PART	LENGTH
1	BT-101	10'-3"
2	SF-654	20'-3"
3	FL-22	7'-6"
4	HT-101	3'-8"
5	MT-116B	14'-4"
6	FL-22	14'-4"
7	MT-116B	12'-4"
8	HT-101	12'-4"

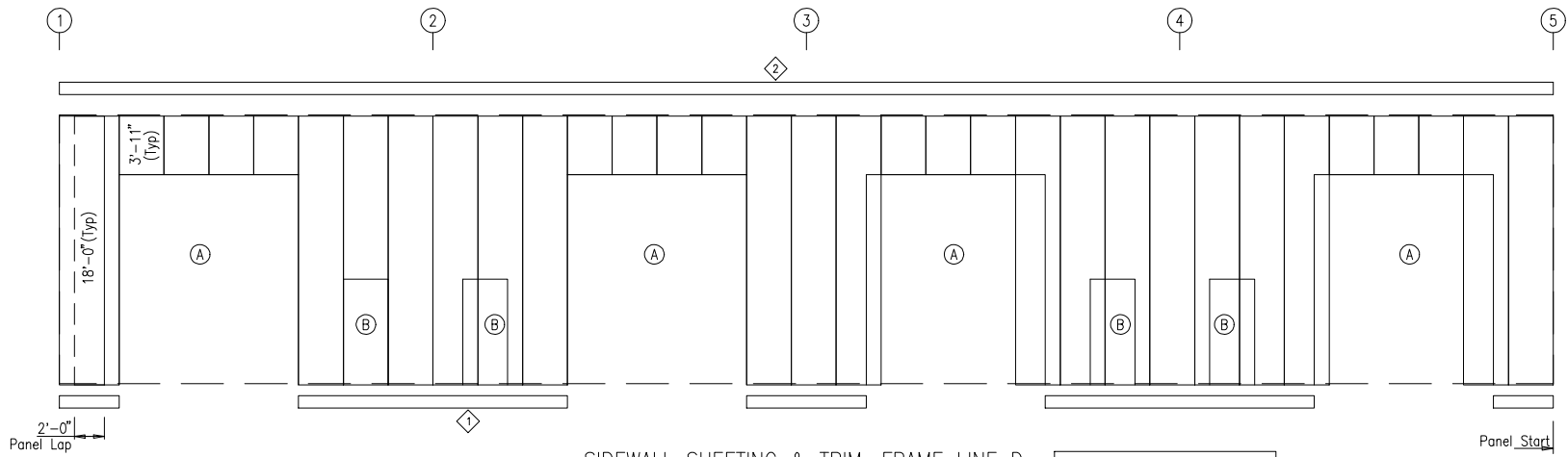
MEMBER TABLE	
FRAME LINE D	
MARK	PART
WF-1	W18651
WF-2	W18651
WF-3	W16651
DJ-1	8M35C14
G-3	8X25Z16
G-4	8X35C12
G-5	8X25Z16
G-6	8X25Z16
G-7	8X35C12
G-8	8X25Z16
G-9	8X25Z16
G-10	8X35C12
JB-1	8M35C14
JB-2	8M35C14
JB-3	8M35C14

CONNECTION PLATES	
FRAME LINE D	
ID	MARK/PART
1	Z-1

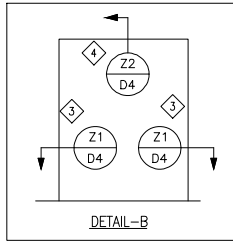
KICK BACK ANGLE	
FRAME LINE D	
ID	MARK
1	KBA-1



SIDEWALL FRAMING: FRAME LINE D



SIDEWALL SHEETING & TRIM: FRAME LINE D  
PANELS: 26 Ga. Super Span X - SMP Sahara Tan



- GENERAL SHEETING & TRIM NOTES**
- Refer to erection drawings for rake angle locations.
  - Roof member screws are at 12" o.c. Eave end lap and peak screws are as shown.
  - Wall member screws are at 6" o.c. at the base member and 12" o.c. at all remaining members.
  - Roof stitch screws are located at each member with two between members (20" max. spacing).
  - Wall stitch screws are located at each member with one between members (20" max. spacing).
  - Skylight stitch screws are at 6" o.c.
  - Start endwall panels at centerline of bldg, unless noted.
  - Gutter, rake, & eave trim lap 2". All other trims lap 1".
  - Field cut or lap panels as required to fit.
  - Field cut panels for all openings.
  - Pop rivet gutter counterflashing to wall panel on 3"-0" centers and caulk all laps.
  - Gutter support strap spacing: Super Span 3"-0, Super Seam 4"-0, Weather Lok-16 2"-8".
  - Corner and/or peak boxes are not furnished with special rake or gutter profiles. Field mixer as req'd.
  - Downspout straps are located 6" from base and all every girt location.
  - Hot-rolled or built-up members must be pre-drilled before attaching members screws.
  - Metal shavings must be swept from the roof each day to avoid surface rusting.
  - Windows and louvers must be installed before sheathing the walls.
  - For clarity, tape sealant, closures, etc. may not be shown. Refer to the standing seam erection manual or standard pull out for screw-down type roof for additional installation instructions.

- GENERAL FRAMING NOTES**
- Angles are marked by their length in feet and inches.
  - Field cut or lap angles as required to fit.
  - Flange braces are marked by their length in decimal inches.
  - Outside flange of girt turns down unless noted.
  - Endwall girts and eave struts do not lap.
  - Field cut and self-top girts at walk doors.
  - Field slot girts for brace rods or cables.
  - Field locate windows and walk doors.
  - Field weld all splices at 14 gauge valley gutters.
  - Field bolt AK400 base clip to endwall columns:  
(2) 5/8" x 1-1/2" A325 bolts if (1) AK400 req'd  
(2) 5/8" x 1-3/4" A325 bolts if (2) AK400 req'd
  - Locate top of roof framed openings flush with the pan of the roof panel.
  - Some field drilling at framed openings may be required. Field drill 9/16" diameter holes.
  - For clarity, tape sealant, closures, etc. may not be shown. Refer to the standing seam erection manual or standard pull out for screw-down type roof for additional installation instructions.
  - Sub-jams for overhead doors, if required, is not furnished by Metal Building Provider

FOR APPROVAL: These drawings, being for approval, are by definition not final and are for conceptual representation only. Their purpose is to confirm the proper interpretation of the project documents. Only drawings issued "For Erector Installation" can be considered complete.

FOR CONSTRUCTION PERMIT: These drawings, being for permit, are by definition not final. Only drawings issued "For Erector Installation" can be considered complete.

FOR ERECTOR INSTALLATION: Four drawings for construction.



ISSUE	DATE	DESCRIPTION	BY	CHK	SHEET DESCRIPTION:	BUILDING SIZE:
P1	07.15.25	FOR CONSTRUCTION PERMIT	PND	PNC	SIDEWALL FRAMING & SHEETING ELEVATION	46'-0" x 100'-0" x 16'-0" x 18'-0"
P2	07.21.25	REV. FOR CONSTRUCTION PERMIT	PND	PNC	CUSTOMER:	CUSTOMER LOCATION:

The Engineer whose seal and signature appear on these documents represents Whitfield Steel Buildings, Inc., and is not the Engineer of Record for the overall project. The Engineer's responsibility is limited to material designed and manufactured by Whitfield Steel Buildings, Inc. and excludes part such as doors, windows, foundation design, and erection of the building.

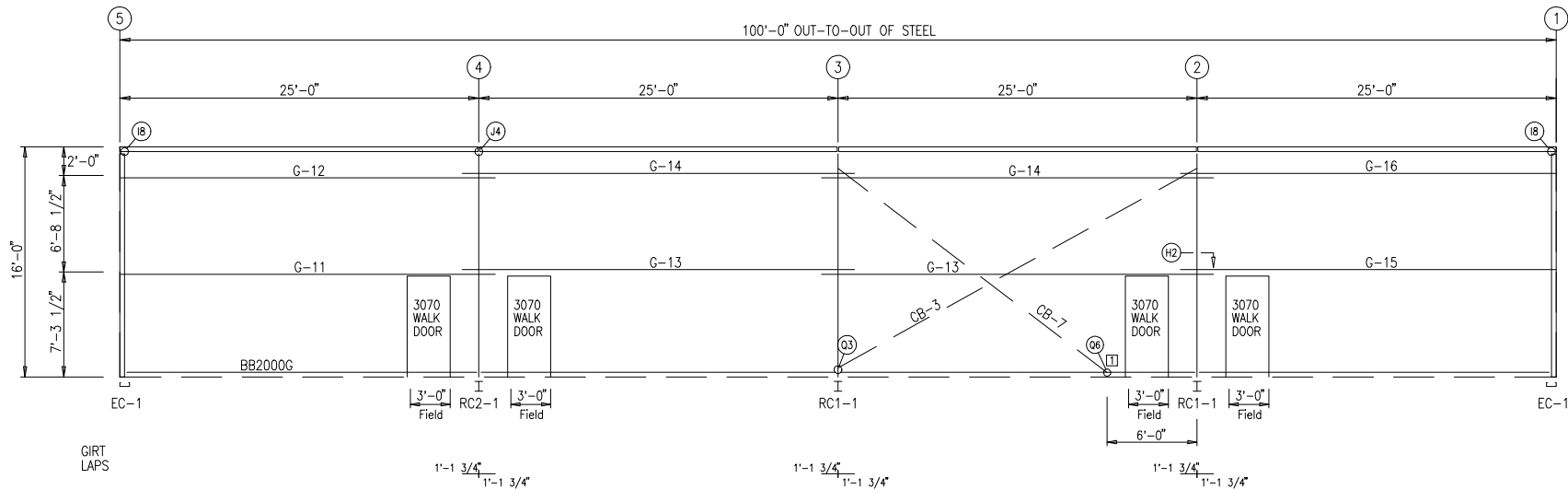
Date: 7/22/25

PROFESSIONAL ENGINEER  
LICENSED

P-21572  
David R. Wall, Jr.  
STATE OF IDAHO  
DAVID RAY WALL JR.

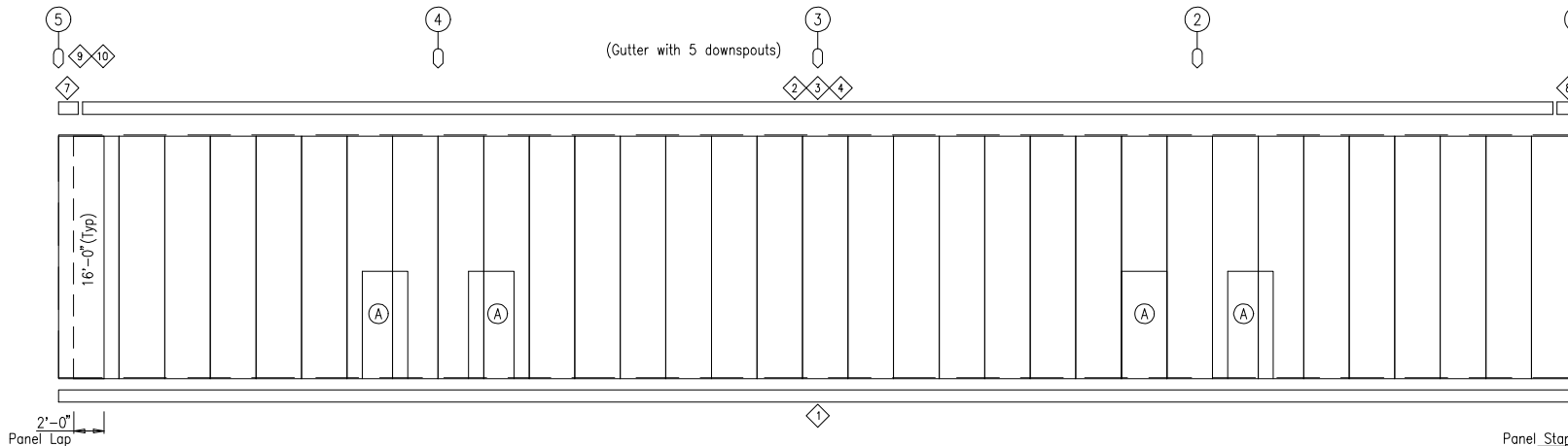
PROJECT LOCATION: RATHORUM, ID 83858  
JOB NO: 14452-37737  
ISSUE: P2

DOWNSPOUT LOCATIONS



SIDEWALL FRAMING: FRAME LINE A

(Gutter with 5 downspouts)



SIDEWALL SHEETING & TRIM: FRAME LINE A

PANELS: 26 Ga. Super Span X - Sahara Tan

GENERAL SHEETING & TRIM NOTES

1. Refer to erection drawings for rake angle locations.
2. Roof member screws are at 12' o.c. Eave end lap and peak screws are as shown.
3. Wall member screws are at 6' o.c. at the base member and 12' o.c. at all remaining members.
4. Roof stitch screws are located at each member with two between members (20' max. spacing).
5. Wall stitch screws are located at each member with one between members (20' max. spacing).
6. Skylight stitch screws are at 6' o.c.
7. Start endwall panels at centerline of bldg. unless noted.
8. Gutter, rake, & eave trim lap 2". All other trims lap 1".
9. Field cut or lap panels as required to fit.
10. Field cut panels for all openings.
11. Pop rivet gutter counterflashing to wall panel on 3'-0" centers and caulk all laps.
12. Gutter support strap spacing: Super Span 3'-0", Super Seam 4'-0", Weather Lok-16 2'-8".
13. Corner and/or peak boxes are not furnished with special rake or gutter profiles. Field miter as req'd.
14. Downspout straps are located 6" from base and at every girt location.
15. Hot-rolled or built-up members must be pre-drilled before attaching members screws.
16. Metal showings must be swept from the roof each day to avoid surface rusting.
17. Windros and louvers must be installed before sheathing the walls.
18. For clarity, tape sealant, closures, etc. may not be shown. Refer to the standing seam erection manual or standard pull out for screw-down type roof for additional installation instructions.

GENERAL FRAMING NOTES

1. Angles are marked by their length in feet and inches.
2. Field cut or lap angles as required to fit.
3. Flange braces are marked by their length in decimal inches.
4. Outside flange of girt turns down unless noted.
5. Endwall girts and eave struts do not lap.
6. Field cut and self-top girts at walk doors.
7. Field slot girts for brace rods or cables.
8. Field locate windows and walk doors.
9. Field weld all splices at 14 gauge valley gutters.
10. Field bolt AK400 base clip to endwall columns:
  - (1) 5/8" x 1-1/2" A325 bolts if (1) AK400 req'd
  - (2) 5/8" x 1-3/4" A325 bolts if (2) AK400 req'd
11. Locate top of roof framed openings flush with the pan of the roof panel.
12. Some field drilling at framed openings may be required. Field drill 9/16" diameter holes.
13. For clarity, tape sealant, closures, etc. may not be shown. Refer to the standing seam erection manual or standard pull out for screw-down type roof for additional installation instructions.
14. Sub-jambas for overhead doors, if required, is not furnished by Metal Building Provider

FOR APPROVAL: These drawings, being for approval, are by definition not final and are for conceptual representation only. Their purpose is to confirm the proper interpretation of the project documents. Only drawings issued "For Erector Installation" can be considered complete.

FOR CONSTRUCTION PERMIT: These drawings, being for permit, are by definition not final. Only drawings issued "For Erector Installation" can be considered complete.

FOR ERECTOR INSTALLATION: Final drawings for construction.



ISSUE	DATE	DESCRIPTION	BY	CHK
P1	07.15.25	FOR CONSTRUCTION PERMIT	PND	PNC
P2	07.21.25	REV. FOR CONSTRUCTION PERMIT	PND	PNC

SHEET DESCRIPTION:		REQD. SIZE:	
SIDEWALL FRAME & SHEETING ELEVATION		48'-0" x 100'-0" x 16'-0" x 18'-0"	
CUSTOMER:		CUSTOMER LOCATION:	
KOLB HWY		RATHURUM, ID 83808	
PROJECT REFERENCE:		JOB NO.:	
KOLB HWY		KOOTENAI	
JOB NO.:		JOB COUNTY:	
RATHURUM, ID 83808		KOOTENAI	
DRW:	CHK:	DATE:	ENG:
PND	PNC	07.21.25	ABO
JOB NO.:		JOB NO.:	
14452-3737		E6	
ISSUE:		ISSUE:	
P2		P2	

TRIM TABLE - THIS WALL ONLY  
FRAME LINE - A

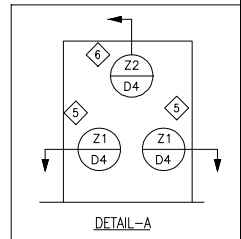
ID	PART	LENGTH
1	BT-101	10'-3"
2	ET-801	20'-3"
3	SF-633	20'-3"
4	GS-10	
5	FL-22	7'-6"
6	HT-101	3'-8"
7	SF-633LC1	
8	SF-633RC1	
9	DS-501	15'-8"
10	DS-106	

MEMBER TABLE  
FRAME LINE A

MARK	PART
G-11	8X25Z14
G-12	8X25Z16
G-13	8X25Z14
G-14	8X25Z16
G-15	8X25Z14
G-16	8X25Z16
CB-3	1.00_ROD
CB-7	1.00_ROD

CONNECTION PLATES  
FRAME LINE A

ID	MARK/PART
1	AK525



Date 7/22/25



The Engineer whose seal and signature appear on these documents represents Whirlwind Steel Buildings, Inc., and is not the Engineer of Record for the overall project. The Engineer's responsibility is limited to material designed and manufactured by Whirlwind Steel Buildings, Inc., and excludes part such as doors, windows, foundation design, and erection of the building.