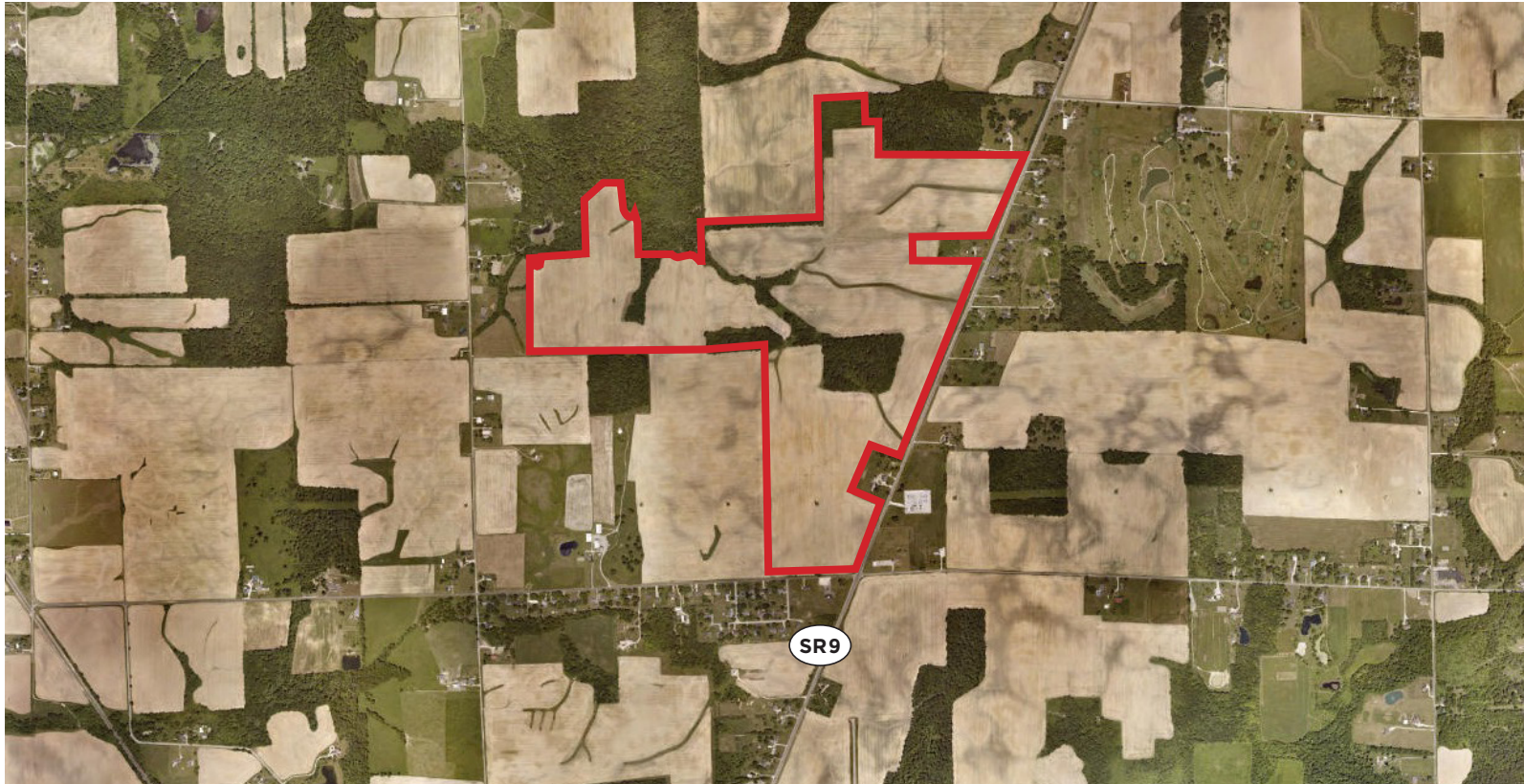


FOR SALE
±278.23 acres
N SR 9 | Marion, IN 46952



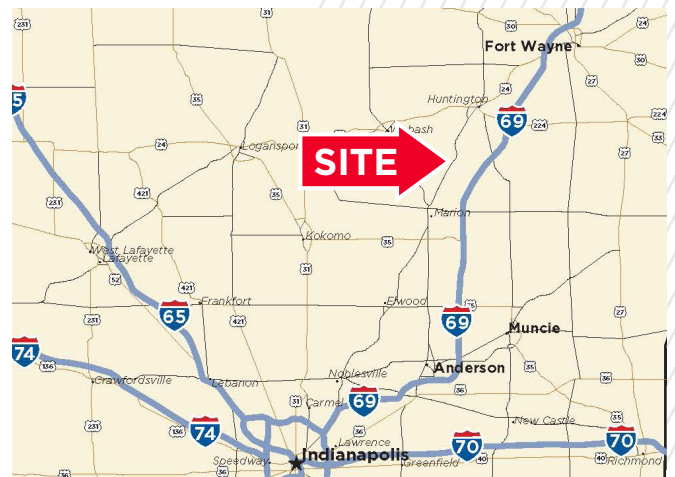
PROPERTY HIGHLIGHTS

±278.23 acres

Unincorporated Grant County, Indiana

High capacity substation adjacent to site

Additional heavy power sites available



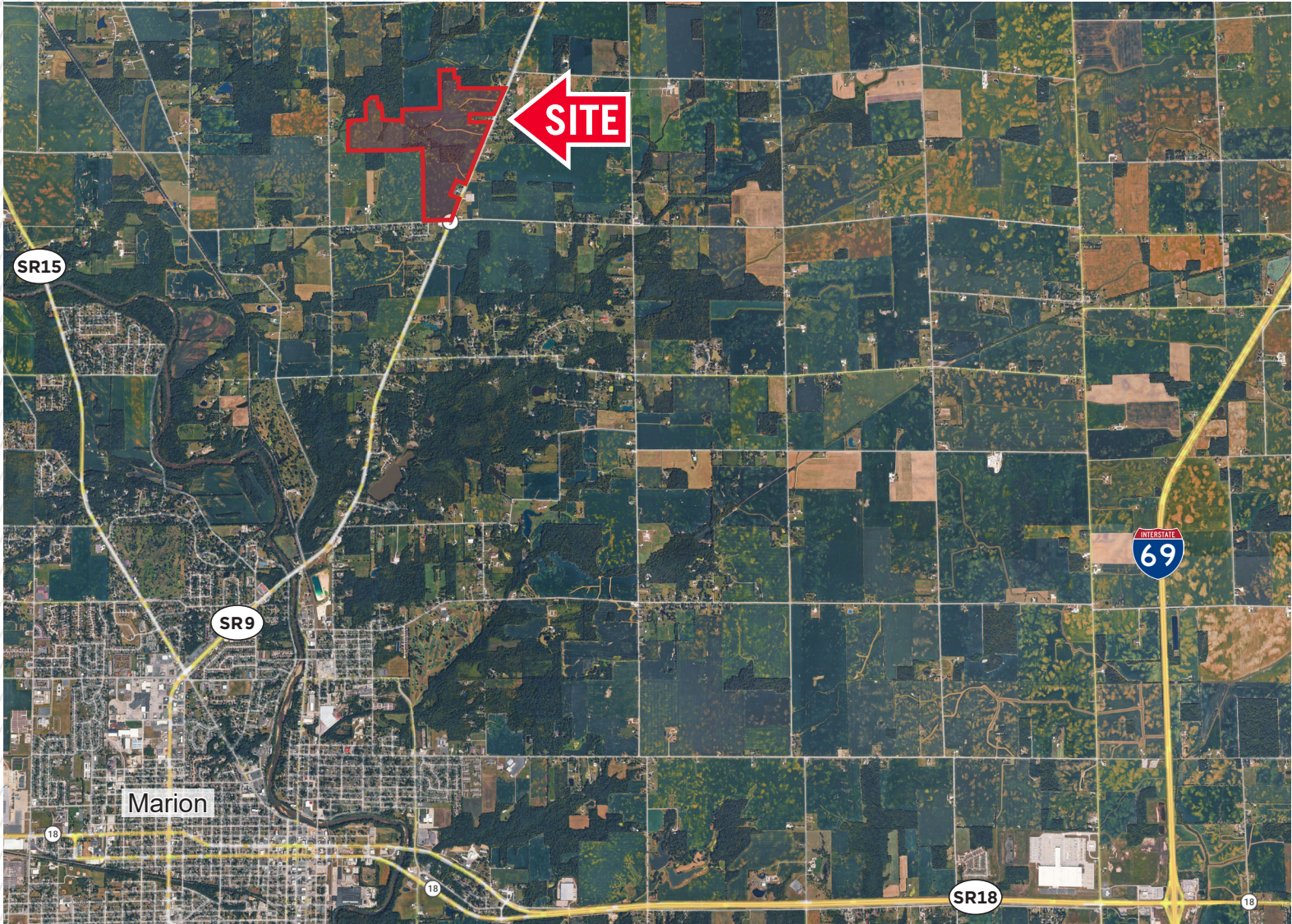
Contact

BO LEFFEL
Vice Chair
+1 317 639 0441
bo.leffel@cushwake.com

BOB DEMAREE
Associate
+1 317 306 9823
bob.demaree@cushwake.com

One American Square
Suite 1800
Indianapolis, IN 46282
+1 317 639 0515

FOR SALE
±278.23 acres
N SR 9 | Marion, IN 46952



Demographics

	1 Mile	3 Mile	5 Mile
Population	308	2,949	19,580
AVG. HH Income	\$158,609	\$128,598	\$79,911
Daytime Population	78	1,512	15,523

Contact

BO LEFFEL
Vice Chair
+1 317 639 0441
bo.leffel@cushwake.com

BOB DEMAREE
Associate
+1 317 306 9823
bob.demaree@cushwake.com

One American Square
Suite 1800
Indianapolis, IN 46282
+1 317 639 0515

©2026 Cushman & Wakefield. All rights reserved. The information contained in this communication is strictly confidential. This information has been obtained from sources believed to be reliable but has not been verified. No warranty or representation, express or implied, is made as to the condition of the property (or properties) referenced herein or as to the accuracy or completeness of the information contained herein, and same is submitted subject to errors, omissions, change of price, rental or other conditions, withdrawal without notice, and to any special listing conditions imposed by the property owner(s). Any projections, opinions or estimates are subject to uncertainty and do not signify current or future property performance.