

FOR LEASE

- Free surface parking for visitors
- Reserved tenant parking
- Extended operating hours;
7AM-7PM M-F, 7AM-6PM SAT
- Renovated common areas
- Locally owned and managed
- Short walk to metro
- Daycare on site
- Operable windows
- **5th Floor features separate
24-hour HVAC system and
24/7 back-up power**

BCC Professional Center **4401 East-West Highway** **Bethesda, Maryland 20814**



<u>Suite</u>	<u>Size</u>	<u>Contiguous</u>
401	1,615 R.S.F.	} 5,524 R.S.F.
403	3,612 R.S.F.	
404	1,092 R.S.F.	
405	820 R.S.F.	
503	1,758 R.S.F.	



***For more details or to arrange a tour
please contact:***

301.961.9696

William K. Montrose
Ext. 203

wmontrose@amrcommercial.com

Sam Farnum
Ext. 216

sfarnum@amrcommercial.com

Although all information furnished is from sources we deem reliable, such information has not been verified and no express representation is made, nor is any to be implied, as to the accuracy thereof, and it is submitted subject to errors, omissions, changes of price/rental or other conditions prior to sale or lease, and subject to withdrawal without notice.



ALEXANDER, MONTROSE, RITTENBERG
Commercial Real Estate Brokerage
Est. 1994

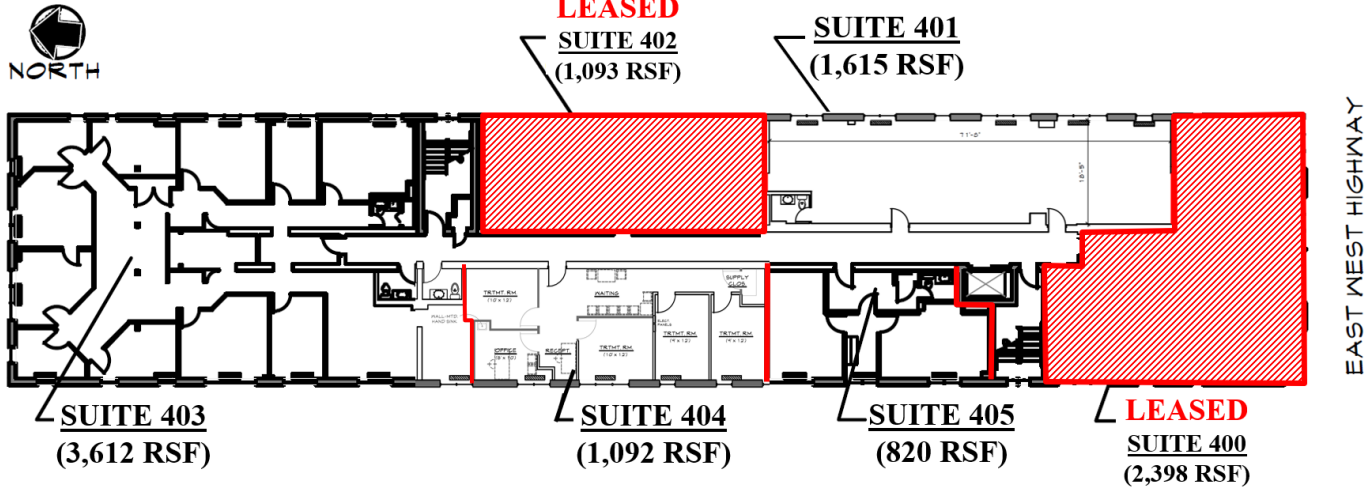
Celebrating
32
Years
1994-2026



Energy Star Certified

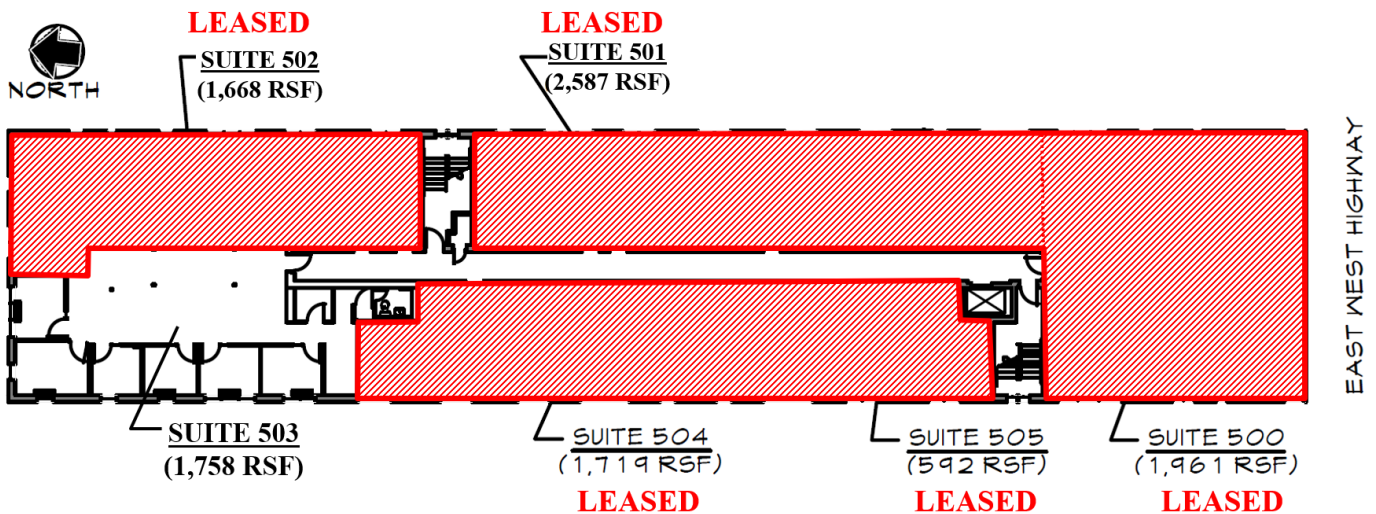
4th Floor

820 – 5,524 RSF Available



5th Floor

1,758 RSF Available



NOT TO SCALE | MEASUREMENTS APPROXIMATE

Although all information furnished is from sources we deem reliable, such information has not been verified and no express representation is made, nor is any to be implied, as to the accuracy thereof, and it is submitted subject to errors, omissions, changes of price/rental or other conditions prior to sale or lease, and subject to withdrawal without notice.