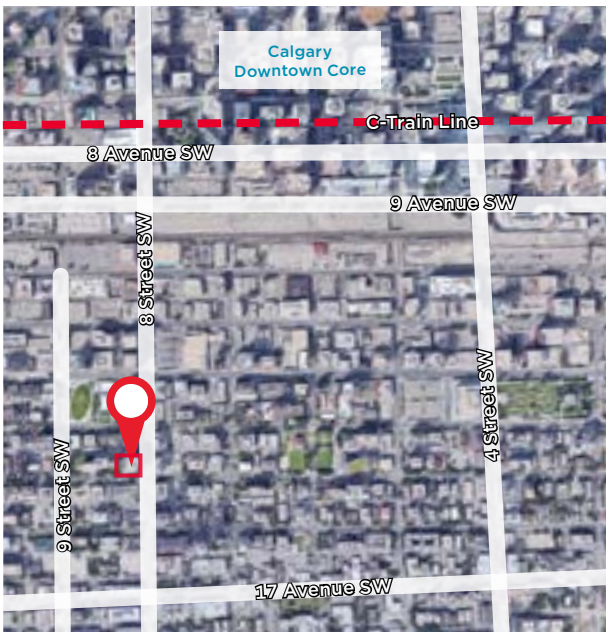


Property Details

Location	Southwest
Total Building Size	101,333 SF
Building Class	B
Year Built	1981

Sublease Particulars

Area Available	Floor 7 - 9,988 SF Floor 10 - 2,322 SF
Rental Rate	Market Sublease Rates
OP Costs	TBV
Parking Ratio	TBV
Parking Stalls	TBV
Parking Costs	TBV
Possession	Immediate
Term	April 29, 2019
Sublandlord	Investors Group



FULL FLOOR AVAILABLE

A. David Walsh

Associate Vice President
 Office Leasing
 403 261 1137
 david.walsh@ca.cushmanwakefield.com

Cushman & Wakefield ULC

Bow Valley Square IV
 250 - 6th Ave SW, Suite 2400
 Calgary, AB T2P 3H7
 cushmanwakefield.com



Property Highlights

- Fully furnished
- Full floor option available
- Located 5 blocks south of Calgary's downtown core and 2 blocks north of 17th Avenue
- Walking distance to LRT
- Kawa Espresso coffee bar and Edges Salon & Spa located on the main floor
- Numerous amenities in the area including: restaurants, shopping and fitness facilities
- Underground parking and storage
- Excellent views
- Office intensive layout



A. David Walsh

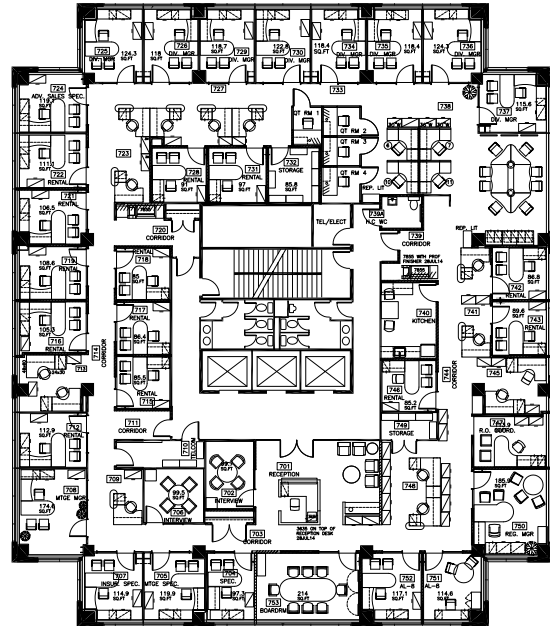
Associate Vice President
Office Leasing
403 261 1137
david.walsh@ca.cushwake.com

Cushman & Wakefield ULC

Bow Valley Square IV
250 - 6th Ave SW, Suite 2400
Calgary, AB T2P 3H7
cushmanwakefield.com

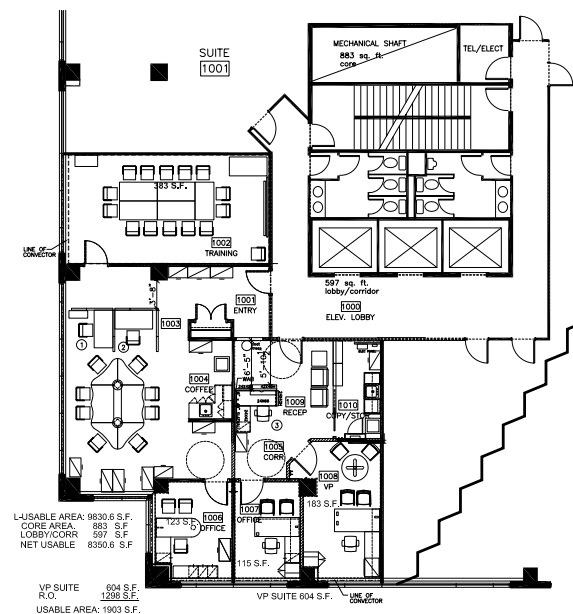
7th Floor Plan Information

- Reception & waiting room
- Kitchen
- 1 large boardroom
- 2 meeting rooms
- 30 offices
- 22 workstations
- 1 large open work space
- 1 storage room
- 1 storage closet



10th Floor Plan Information

- Reception
- Copy room / storage
- 2 kitchenettes
- 1 executive office
- 2 offices
- 1 large 14 person boardroom
- 6 workstations



A. David Walsh
 Associate Vice President
 Office Leasing
 403 261 1137
 david.walsh@ca.cushwake.com

Cushman & Wakefield ULC
 Bow Valley Square IV
 250 - 6th Ave SW, Suite 2400
 Calgary, AB T2P 3H7
 cushmanwakefield.com