

**32,000 SF AVAILABLE FOR LEASE**

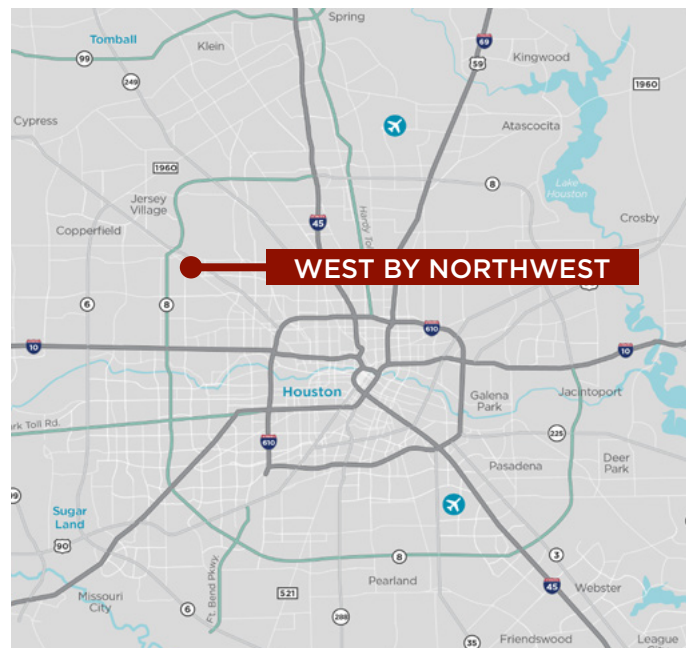
# **WEST BY NORTHWEST**

5910 WEST BY NORTHWEST BLVD  
HOUSTON, TX 77040

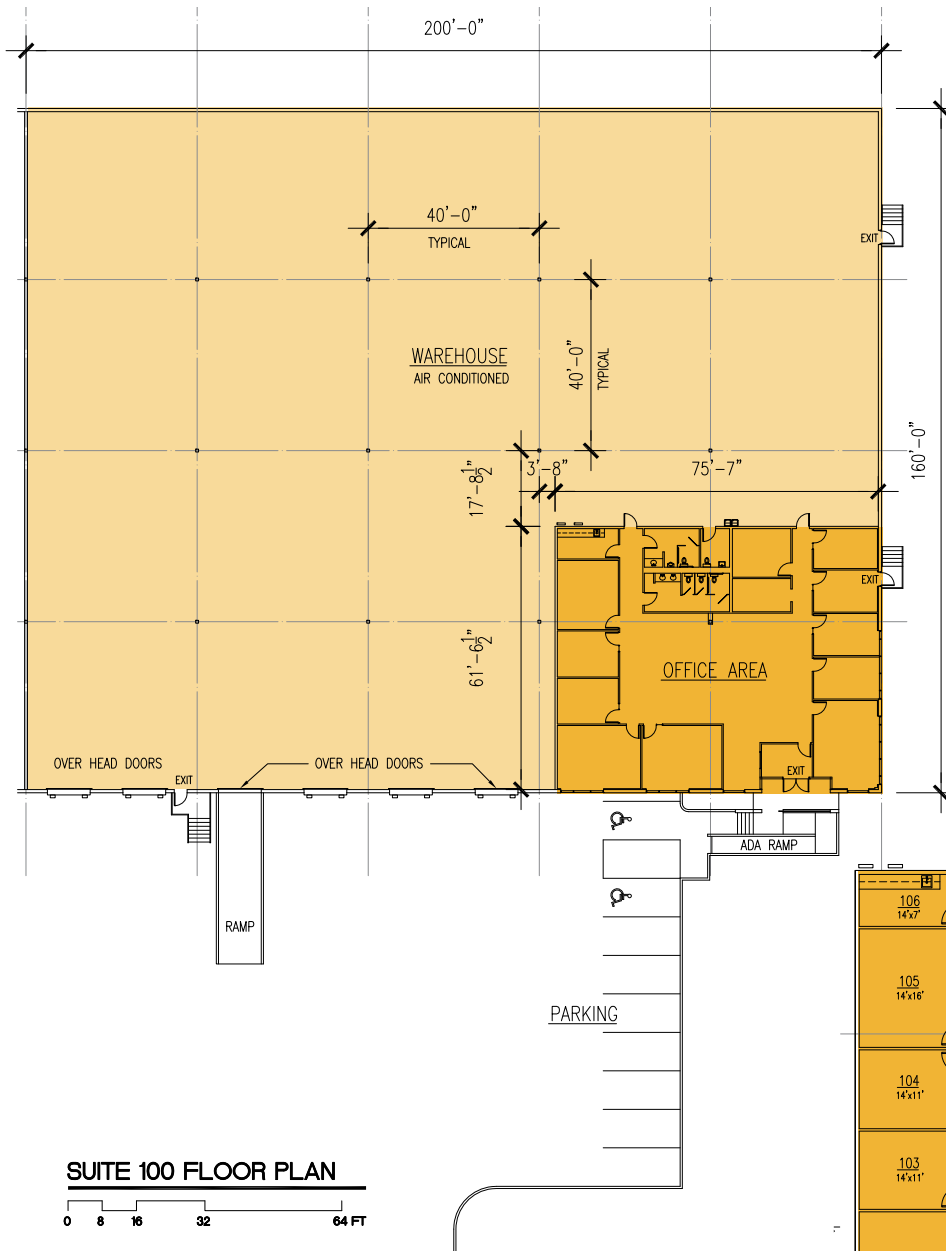


## **PROPERTY HIGHLIGHTS**

- 32,000 SF Available
- 4,700 SF Office
- 27,300 SF Warehouse
- (5) Dock High Loading Doors
- (1) Drive-In Ramp
- 24' Clear Height
- Climate Controlled Warehouse
- ESFR Sprinkler System
- End-Cap with Frontage on Hempstead Hwy
- Direct Access to Beltway 8 and Highway 290
- Strategic Northwest Houston Location
- Power: 800 Amps 480 Volts 3-Phase
- Available July 1, 2026

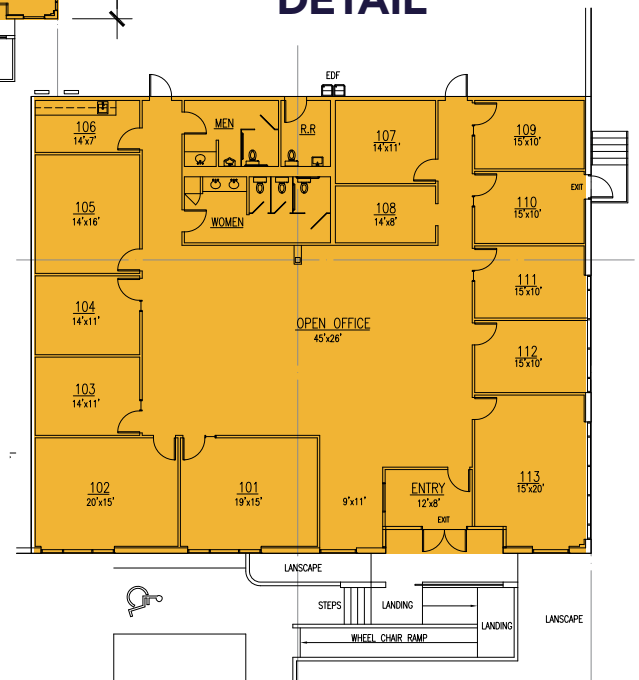


# FLOOR PLAN



**OFFICE: 4,700 SF**  
**WAREHOUSE: 27,300 SF**  
**TOTAL: 32,000 SF**

## OFFICE DETAIL



## FOR MORE INFORMATION CONTACT

**JOHN KRUSE**  
*Managing Director*  
 Direct: +1 281 688 9234  
 Mobile: +1 713 304 4919  
 john.kruse@cushwake.com

**KELLY LANDWERMEYER**  
*Managing Director*  
 Direct: +1 281 688 6143  
 Mobile: +1 713 249 4295  
 Kelly.Landwermeier@cushwake.com

