

EAST BELT BUSINESS PARK

 TRANSWESTERN

1485 EAST SAM HOUSTON PARKWAY SOUTH | SUITES 100 & 140 | PASADENA, TX 77503

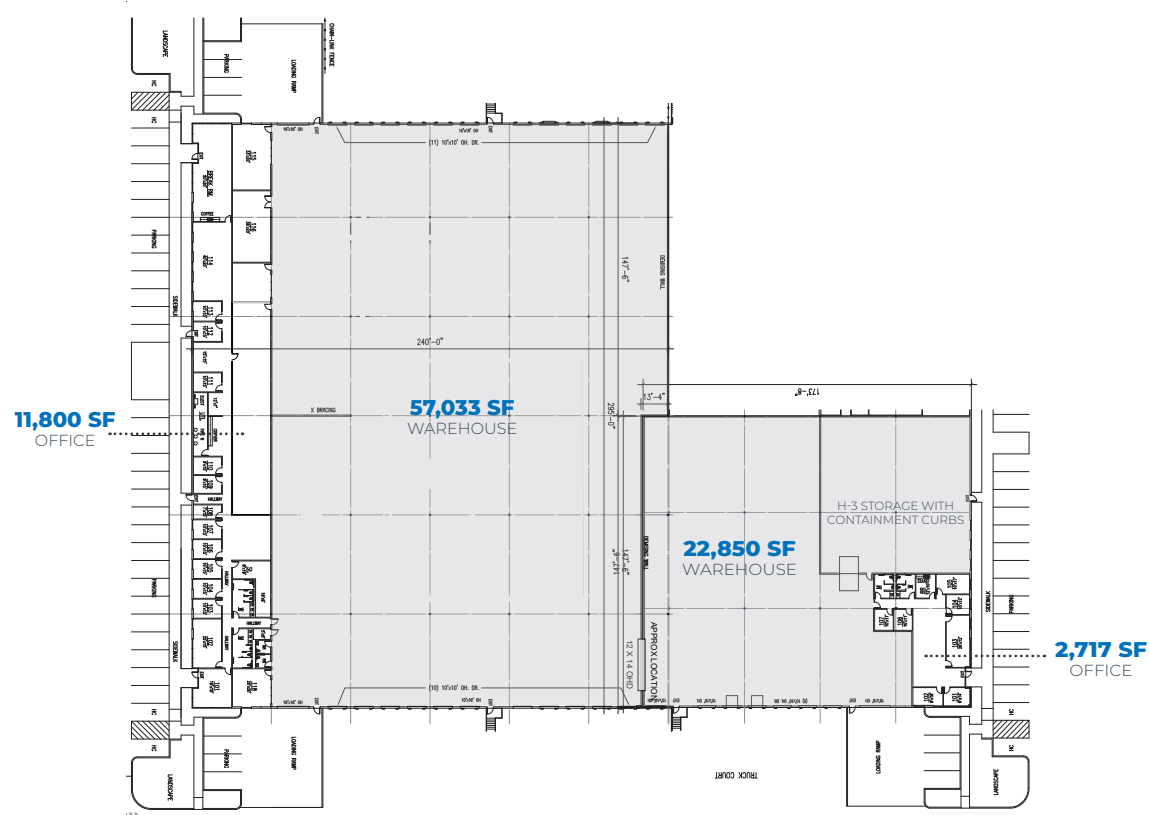


FOR LEASE | 94,400 SF Office/Warehouse Space Near the Port of Houston

EAST BELT BUSINESS PARK

1485 EAST SAM HOUSTON PARKWAY SOUTH | SUITES 100 & 140 | PASADENA, TX 77503

FLOOR PLAN



PROPERTY FEATURES

- 94,400 SF Total
- 14,517 SF Office
- 79,883 SF Warehouse
- 6,241 SF (79' x 79') H-3 Storage Area with Containment Curbs
- Cross Dock & Front Load Configuration
- (27) 10' x 10' Dock High Loading Doors
- (3) 10' x 16' Dock High Loading Door
- (3) 16' x 16' Ramp Door
- (6) Pit Levelers
- (2) Edge-of-Dock Levelers
- LED Warehouse Lights
- 24' Clear Height
- ESFR Sprinkler System
- Fenced Area in Truck Court (Can Be Utilized for Outside Storage)
- Proximity to Barbours Cut and Bayport Container Terminals

T TRANSWESTERN
LEASING CONTACTS

CRAIG BEAN
713.490.3784
CRAIG.BEAN@TRANSWESTERN.COM

BRIAN GAMMILL
713.270.3321
BRIAN.GAMMILL@TRANSWESTERN.COM

DARRYL NOON
713.270.3325
DARRYL.NOON@TRANSWESTERN.COM

EAST BELT BUSINESS PARK

1485 EAST SAM HOUSTON PARKWAY SOUTH | SUITES 100 & 140 | PASADENA, TX 77503

AERIAL MAP



T TRANSWESTERN
LEASING CONTACTS

CRAIG BEAN
713.490.3784
CRAIG.BEAN@TRANSWESTERN.COM

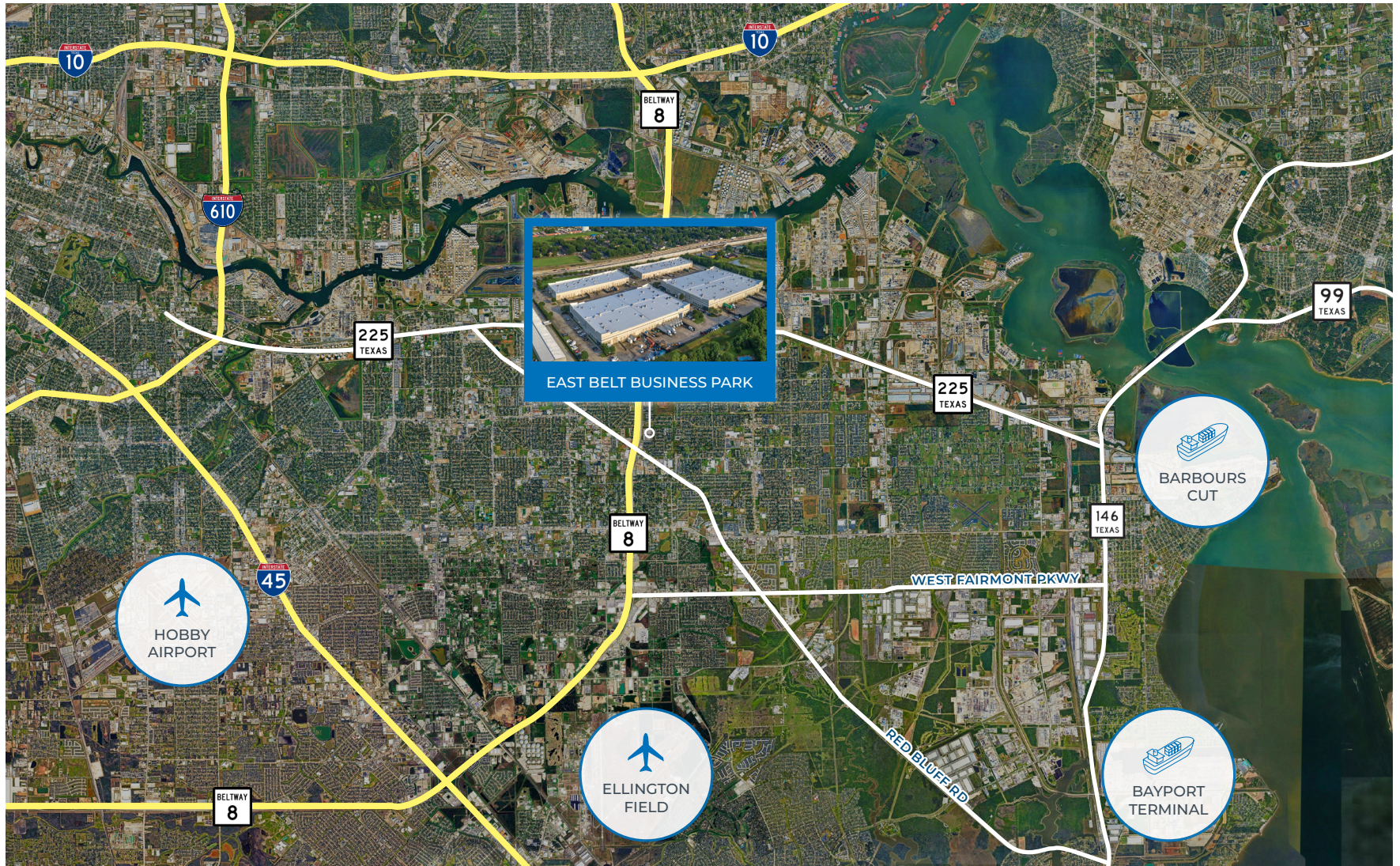
BRIAN GAMMILL
713.270.3321
BRIAN.GAMMILL@TRANSWESTERN.COM

DARRYL NOON
713.270.3325
DARRYL.NOON@TRANSWESTERN.COM

EAST BELT BUSINESS PARK

1485 EAST SAM HOUSTON PARKWAY SOUTH | SUITES 100 & 140 | PASADENA, TX 77503

LOCATION



TW TRANSWESTERN
LEASING CONTACTS

CRAIG BEAN
713.490.3784
CRAIG.BEAN@TRANSWESTERN.COM

BRIAN GAMMILL
713.270.3321
BRIAN.GAMMILL@TRANSWESTERN.COM

DARRYL NOON
713.270.3325
DARRYL.NOON@TRANSWESTERN.COM

The information provided herein was obtained from sources believed reliable; however, Transwestern makes no guarantees, warranties or representations as to the completeness or accuracy thereof. The presentation of this property is submitted subject to errors, omissions, change of price or conditions, prior sale or lease, or withdrawal without notice. Copyright © 2025 Transwestern.