

1641 10TH STREET
PORT HURON, MICHIGAN

MEDICAL FOR SALE OR LEASE
4,000 Square Feet Available



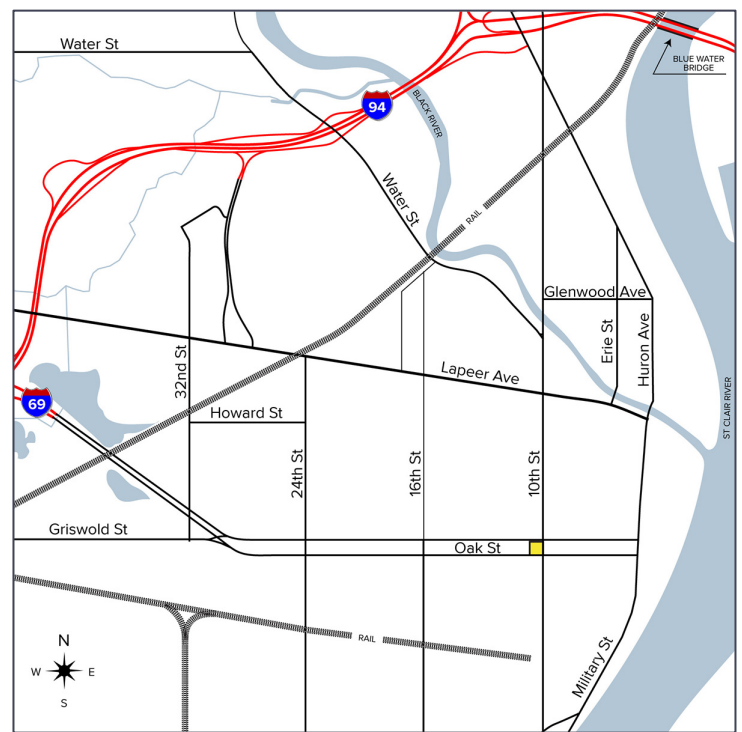
**SIGNATURE
ASSOCIATES**
KNOW SIGNATURE | KNOW RESULTS

FREESTANDING MEDICAL BUILDING



PROPERTY FEATURES

- 4,000 square feet available
- Highly visible, freestanding medical building
- Adjacent to Walgreens
- (12) exam rooms, lab, and x-ray room
- Efficient layout and patient flow
- Lease Rate: \$12.00/sq. ft. NNN
- Sale Price: \$599,000 (\$149.75/sq. ft.)



For more information, please contact:

JEFFREY TREPECK
(248) 359 0626
jtrepeck@signatureassociates.com

SIGNATURE ASSOCIATES
One Towne Square, Suite 1200
Southfield, MI 48076
www.signatureassociates.com

1641 10th Street – Port Huron, Michigan

Medical For Sale or Lease

4,000
Square Feet
AVAILABLE

Interior Photos



For more information, please contact:

JEFFREY TREPECK
(248) 359 0626
jtrepeck@signatureassociates.com

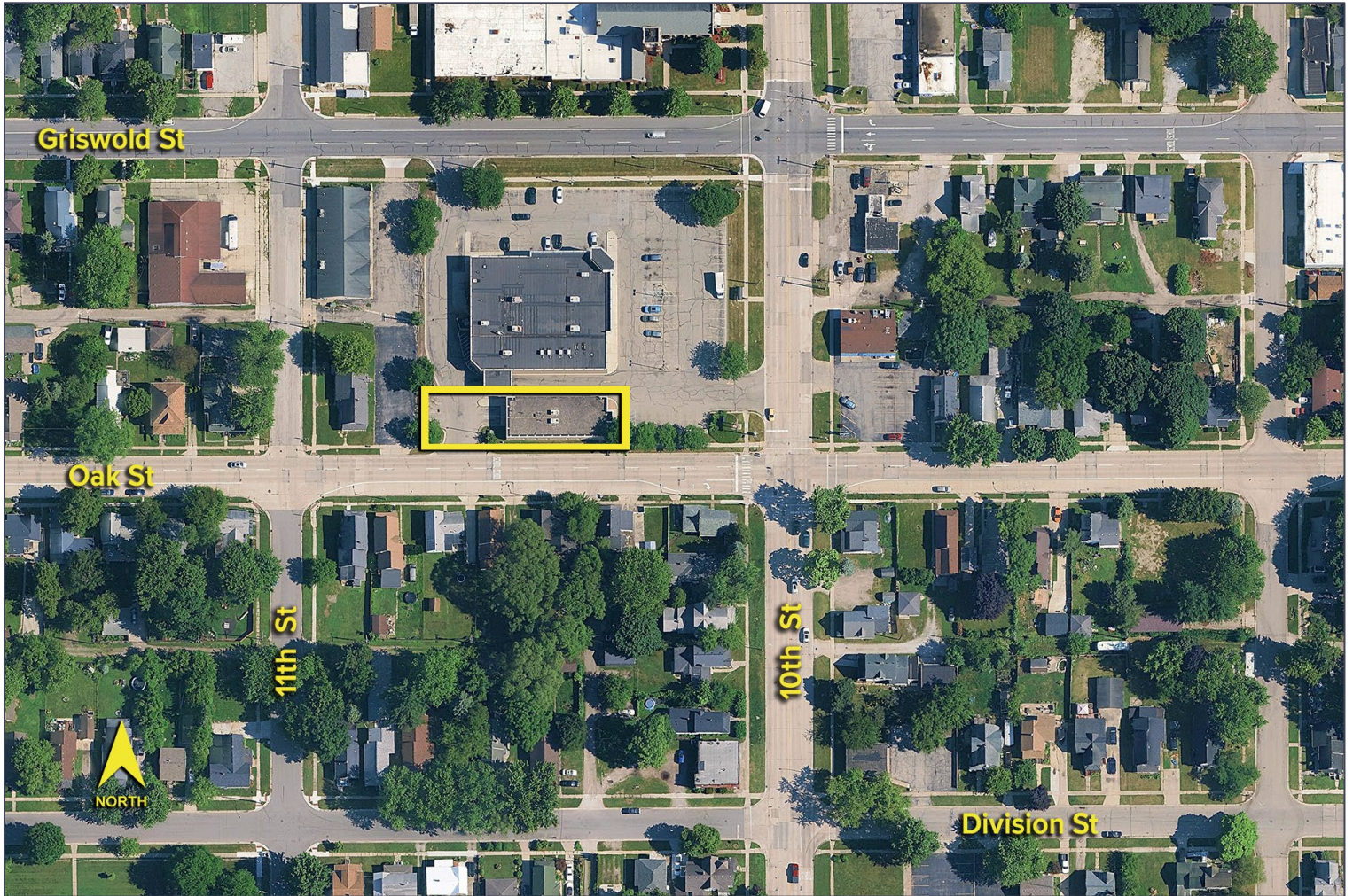
SIGNATURE ASSOCIATES
One Towne Square, Suite 1200
Southfield, MI 48076
www.signatureassociates.com

1641 10th Street – Port Huron, Michigan

Medical For Sale or Lease

4,000
Square Feet
AVAILABLE

Aerial



For more information, please contact:

JEFFREY TREPECK
(248) 359 0626
jtrepeck@signatureassociates.com

SIGNATURE ASSOCIATES
One Towne Square, Suite 1200
Southfield, MI 48076
www.signatureassociates.com