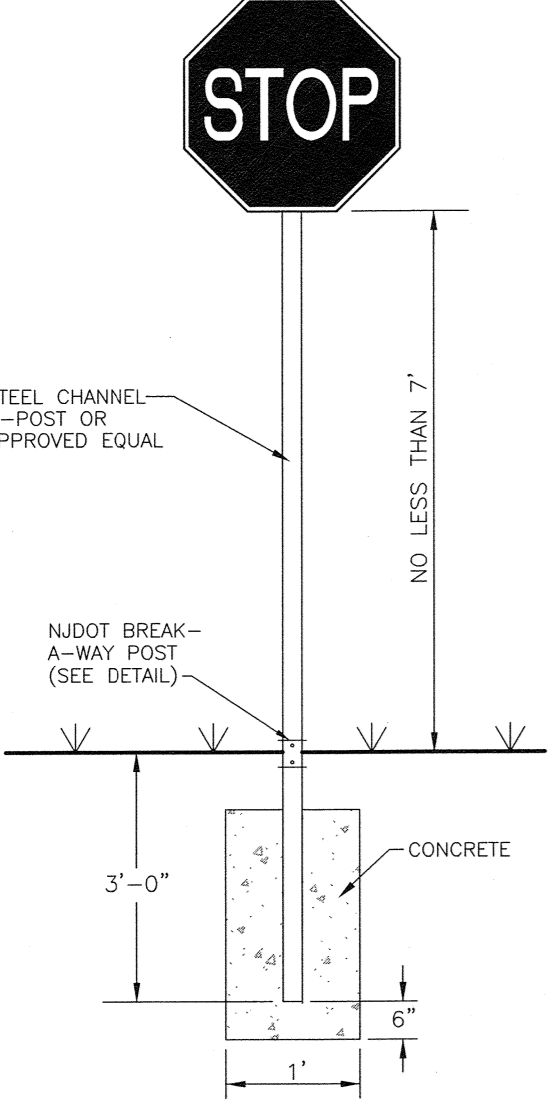


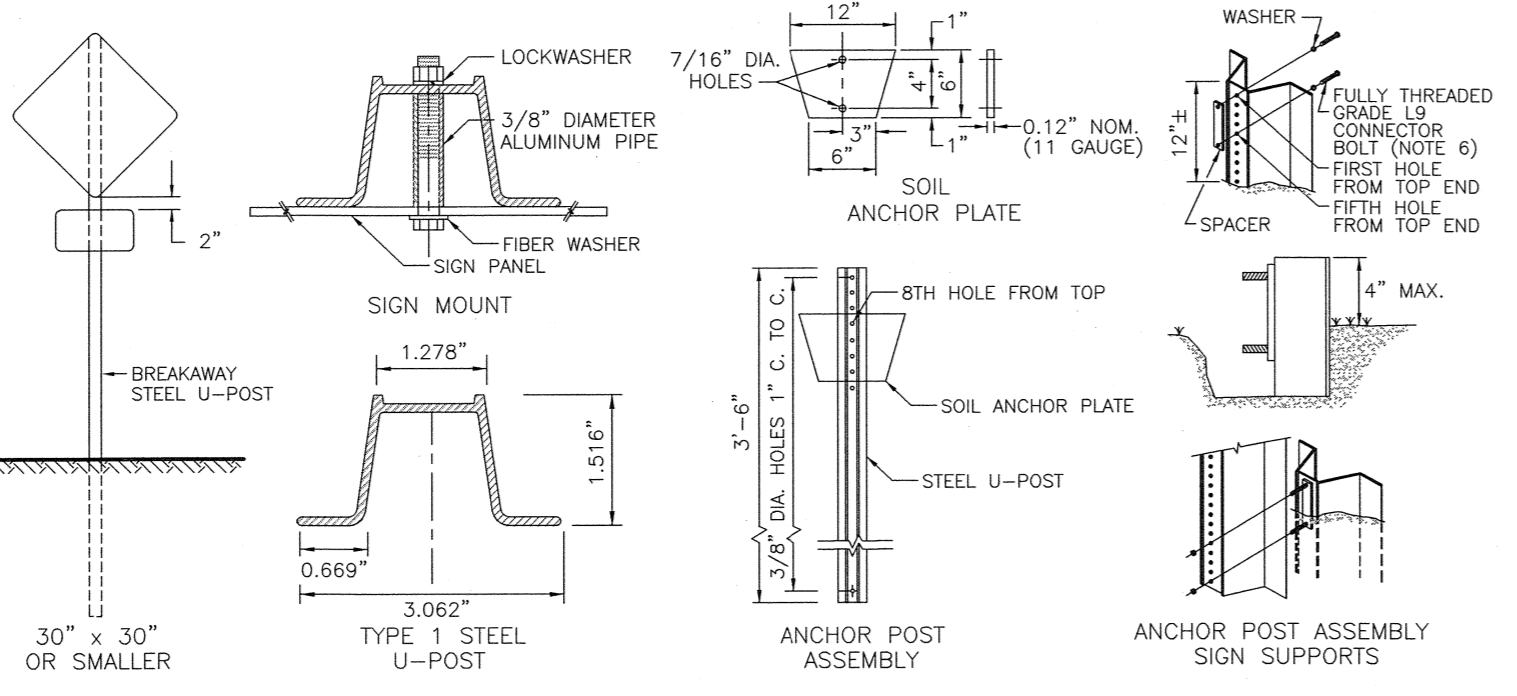
NOTE:  
SIGNS TO BE COVERED WITH TYPE IIIA RETRO-REFLECTIVE SHEETING (NJDOT SECTION 019.03/916.04.2c)



**TRAFFIC SIGN POST DETAIL**  
N.T.S.

**GENERAL NOTES:**

- ALL POSTS SHALL BE OF ADEQUATE LENGTH TO MEET THE REQUIREMENTS FOR ERECTION AS STATED IN THE CURRENT "MANUAL OF UNIFORM TRAFFIC CONTROL DEVICES FOR STREETS AND HIGHWAYS" AND AS INDICATED BELOW.
- ALL SMALL SIGN SUPPORTS SHALL BE OF THE BREAKAWAY TYPE WITH EXCEPTION OF THOSE INSTALLED BEHIND GUIDE RAIL OR OTHER ROADSIDE BARRIER.
- ALL STEEL POSTS AND BRACKETS SHALL BE CUT, BENT, AND HOLES PUNCHED AND DRILLED BEFORE GALVANIZING, GALVANIZING SHALL BE IN CONFORMANCE WITH CURRENT ASTM A123.
- ALL STEEL U-POST SIGN SUPPORTS MUST BE INSTALLED FACING THE PREDOMINANT TRAFFIC FLOW. A MOUNTING BRACKET TRAFFIC FLOW. A MOUNTING BRACKET SHOULD BE USED ON SIDE MOUNTED SIGNS SUCH AS "ONE WAY" SIGNS INSTALLED IN MEDIANS.
- SIGN PANEL SIZES SHALL DETERMINE POST TYPE AND NUMBER AS SHOWN ON THIS DETAIL.
- BOLTS SHALL NOT PROTRUDE MORE THAN 3/4" BEYOND THE NUT WHEN TIGHT, BUT SHALL ENGAGE ALL THREADS IN THE NUT.
- WHEN SIGNS ARE INSTALLED ON SLOPES 10H:1V OR FLATTER, THE MINIMUM VERTICAL CLEARANCE REQUIREMENTS FOR SIGNS ARE: FOR SINGLE POST INSTALLATIONS - THE MINIMUM DISTANCE BETWEEN THE EDGE OF PAVEMENT AND THE BOTTOM OF ANY PANEL MUST BE 7 FEET, AND THE MINIMUM DISTANCE FROM EDGE OF PAVEMENT TO THE TOP OF ANY SIGN PANEL MINIMUM DISTANCE FROM EDGE OF PAVEMENT TO THE TOP OF ANY SIGN PANEL MUST BE 9 FEET.
- FOR MULTI-POST INSTALLATIONS - THE MINIMUM DISTANCE BETWEEN THE EDGE OF PAVEMENT AND THE BOTTOM OF A MAJOR SIGN PANEL MUST BE 7 FEET - SECONDARY SIGN PANELS (INTERSTATE AND FREEWAYS) - THE MINIMUM DISTANCE BETWEEN THE EDGE OF PAVEMENT AND THE BOTTOM OF A SECONDARY SIGN PANEL IS 6 FEET - SECONDARY SIGN PANELS (INTERSTATE AND FREEWAYS) - THE BOTTOM OF THE MAJOR SIGN PANEL IS 6 FEET AND THE SECONDARY SIGN PANEL A MINIMUM OF 5 FEET ABOVE THE EDGE OF PAVEMENT.
- WHERE GRADING OF 10H:1V OR FLATTER CANNOT BE OBTAINED, OR WHERE CURB OR BERM IS GREATER THAN 4 INCHES, THE MINIMUM VERTICAL CLEARANCE WILL BE MEASURED FROM THE GROUND LINE TO THE BOTTOM OF THE SIGN.
- PERMANENT SIGN SUPPORTS SHOULD NOT BE INSTALLED ON SLOPES GREATER THAN 10H:1V, EXCEPT WHERE GRADING OF 10H:1V CANNOT BE OBTAINED OR THE SIGN SUPPORTS WILL BE BEHIND A TRAFFIC BARRIER. THE SLOPE SHALL EXTEND A MINIMUM OF 3 FEET BEYOND THE OUTSIDE EDGE OF SIGN.
- EXTRUDED ALUMINUM SIGN PANELS ARE NOT PERMITTED FOR USE WITH STEEL U-POST SIGN SUPPORTS.
- STEEL U-POST SIGN SUPPORTS SHALL NOT BE PLACED IN FRONT OF GUIDE RAIL AND THE POSTS MUST NOT STRADDLE GUIDE RAIL. TO EXTEND THE HEIGHT OF A SIGN POST, A MAXIMUM OF ONE SPLICE MAY BE MADE AND MUST BE A MINIMUM OF 9 FEET FROM THE GROUNDLINE TO CENTER LINE OF SPLICE.

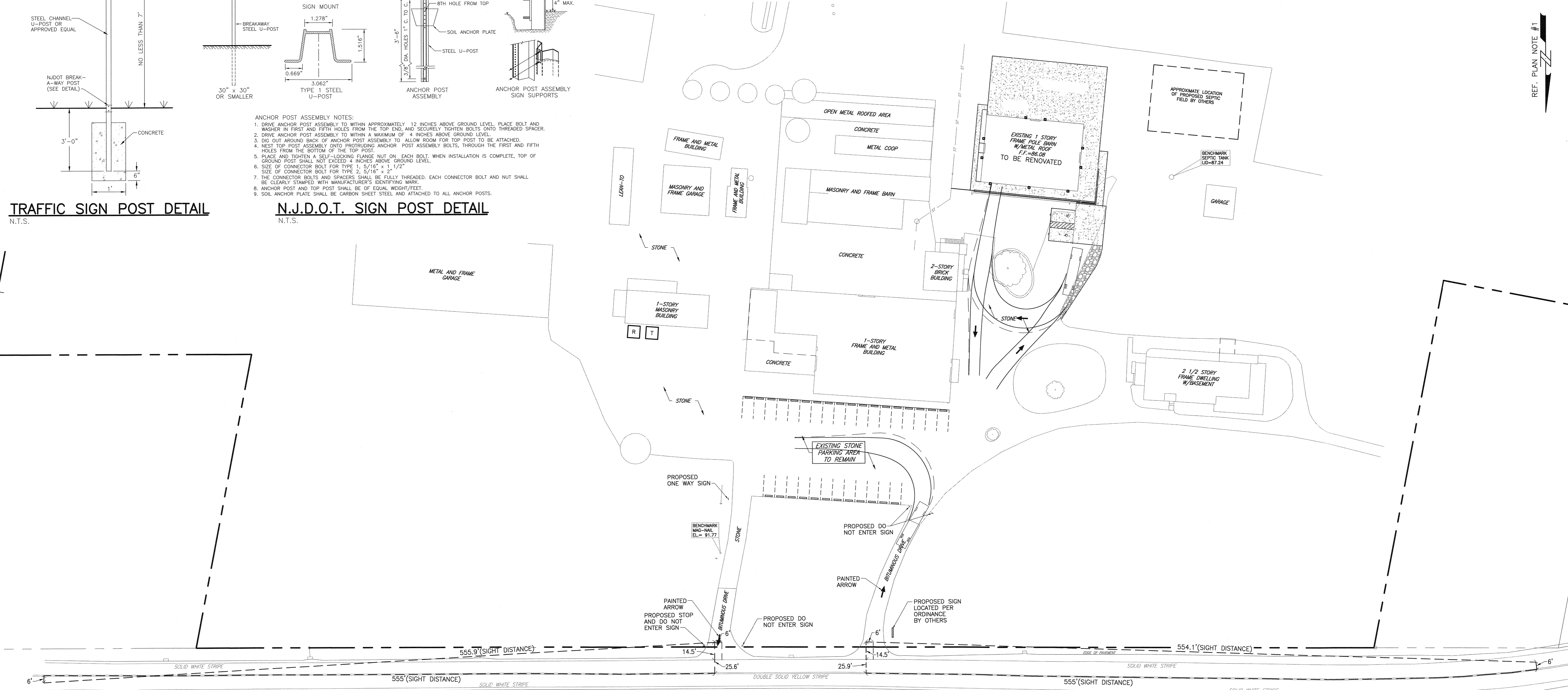
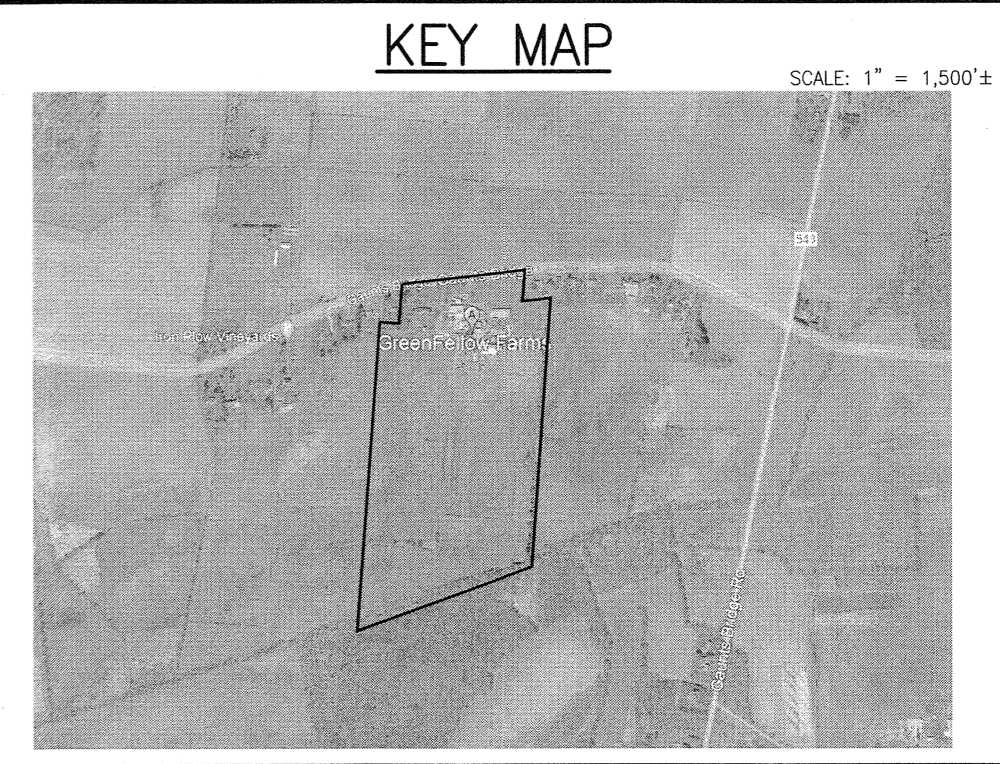
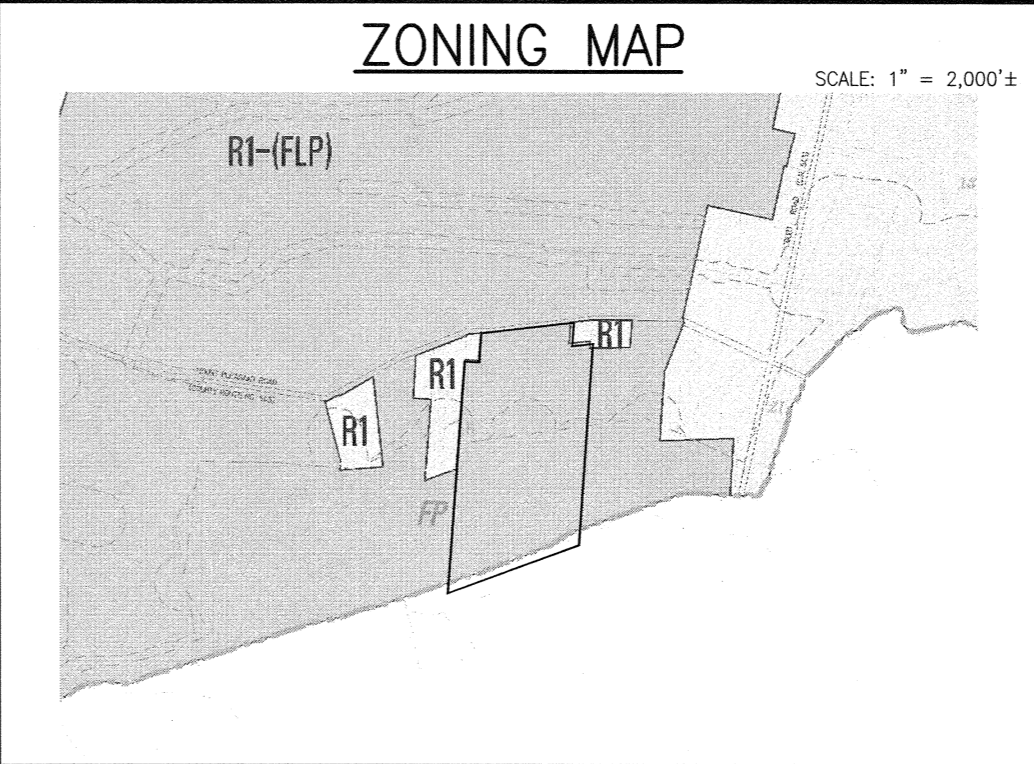


- ANCHOR POST ASSEMBLY NOTES:**
- DRIVE ANCHOR POST ASSEMBLY TO WITHIN APPROXIMATELY 12 INCHES ABOVE GROUND LEVEL. PLACE BOLT AND WASHER IN FIRST AND FIFTH HOLES FROM THE TOP END, AND SECURELY TIGHTEN BOLTS ONTO THREADED SPACER.
  - DRIVE ANCHOR POST ASSEMBLY TO WITHIN A MAXIMUM OF 4 INCHES ABOVE GROUND LEVEL.
  - DO OUT AROUND BACK OF ANCHOR POST ASSEMBLY TO ALLOW ROOM FOR TOP POST TO BE ATTACHED.
  - NEST TOP POST ASSEMBLY ONTO PROTRUDING ANCHOR POST ASSEMBLY BOLTS, THROUGH THE FIRST AND FIFTH HOLES FROM THE BOTTOM OF THE TOP POST.
  - PLACE AND TIGHTEN A SELF-LOCKING FLANGE NUT ON EACH BOLT, WHEN INSTALLATION IS COMPLETE, TOP OF GROUND SHALL NOT EXCEED 4 INCHES ABOVE GROUND LEVEL.
  - SIZE OF CONNECTOR BOLT FOR TYPE 1, 5/16" x 1 1/2"
  - SIZE OF CONNECTOR BOLT FOR TYPE 2, 5/16" x 2 1/2"
  - THE CONNECTOR BOLTS AND SPACERS SHALL BE FULLY THREADED. EACH CONNECTOR BOLT AND NUT SHALL BE CLEARLY STAMPED WITH MANUFACTURER'S IDENTIFYING MARK.
  - ANCHOR POST AND TOP POST SHALL BE OF EQUAL WEIGHT/FEET.
  - SOIL ANCHOR PLATE SHALL BE CARBON SHEET STEEL AND ATTACHED TO ALL ANCHOR POSTS.

**N.J.D.O.T. SIGN POST DETAIL**  
N.T.S.

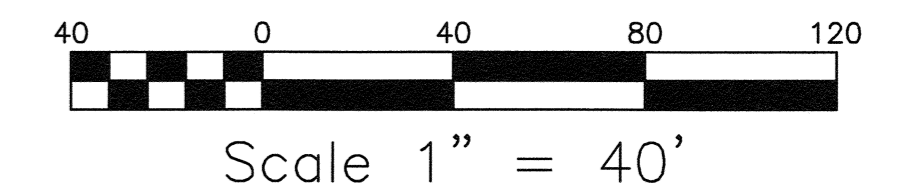
**GENERAL NOTES:**

- OUTBOUNDS SHOWN HEREON TAKEN FROM A PLAN ENTITLED: "BURLINGTON COUNTY FARM PRESERVATION SURVEY OF PROPERTY, CRESCENT FARMS TRACT, BLOCK 22, LOT 4.01, BLOCK 23, LOT 11, MANSFIELD TOWNSHIP, BURLINGTON COUNTY, NEW JERSEY" PREPARED BY TAYLOR-WISEMAN & TAYLOR OF MOUNT LAUREL, NEW JERSEY DATED JUNE 4, 1989.
- EXISTING TOPOGRAPHIC CONDITIONS SHOWN HEREON BASED ON FIELD WORK PERFORMED BY THIS OFFICE ON JUNE 8, 2021, JUNE 9, 2021 AND AUGUST 10, 2021.
- SUBJECT PROPERTY BEING KNOWN AS BLOCK 22, LOT 4.01 CONTAINING AN AREA OF 3,262,883 S.F. OR 74.90549± ACRES.
- HORIZONTAL DATUM IS BASED ON PLAN REFERENCED IN NOTE #1 ABOVE.
- SUBJECT PROPERTY BEING LOCATED WITHIN THE R1-FLP FARMLAND PRESERVATION AREA DISTRICT PER THE ZONING MAP OF THE TOWNSHIP OF MANSFIELD, BURLINGTON COUNTY, NEW JERSEY.
- VERTICAL DATUM SHOWN IS BASED ON NAVD 1988 DATUM ESTABLISHED BY GPS OBSERVATIONS PERFORMED BY THIS OFFICE.
- AREA OF PROPOSED IMPROVEMENTS BEING LOCATED WITHIN ZONE 'X' ON THE CURRENT FEMA MAP #34005C0160F, EFFECTIVE DATE 12/21/2017.
- ANY FIELD DRAINS IMPACTING THE SITE ENCOUNTERED WILL BE RE-ROUTED AS A RESULT OF ANY PROPOSED CONSTRUCTION.



**MOUNT PLEASANT ROAD**  
(BURLINGTON COUNTY ROUTE #543)

CLEAR SIGHT TRIANGLE BASED ON 55 MILE PER HOUR DESIGN SPEED



REF. PLAN NOTE #1

**RANSOM Consulting LLC**  
(CERTIFICATE OF AUTHORIZATION #24GA28173300)  
#209 ROWAN BOULEVARD  
GLASSBORO, NEW JERSEY 08028  
www.ransomny.com  
TELEPHONE (856) 464-0224

Proj. No.:	210.90087	Revisions:	
Date:	3/15/22	Scale:	1" = 40'
Drawn By:	IF	Checked By:	SDB
Date:	4/9/2022		

**SIGHT DISTANCE PLAN**  
FOR  
**#27058 MOUNT PLEASANT ROAD**  
SITUALTE  
PLATE 4, BLOCK 22, LOT 4.01  
TOWNSHIP OF MANSFIELD, BURLINGTON COUNTY, NEW JERSEY

**SCOTT D. BROWN**  
PROFESSIONAL ENGINEER & LAND SURVEYOR  
N.J. LICENSE NO. 245603625000