

Available Office Space

2312 W. Pawnee, Suite 104 Wichita, KS 67213



PROPERTY HIGHLIGHTS

- Located near the NE/corner of Pawnee & Meridian
- Ample Parking
- Easy Access to US-400 (Kellogg Ave), K-42, & I-235
- 14,000+ Vehicles per day

PROPERTY DETAILS

- Formerly a Chiropractic Clinic with X-ray room
- Built in reception counter
- ADA restroom
- Executive office with private restroom
- Three additional rooms
- Large room with kitchenette
- Storage
- Rent Starting at \$1,200.00 per month

DEMOGRAPHICS

	1 Mile	3 Miles	5 Miles
Population	22,917	72,800	91,070
Avg. HH Income	\$45,745	\$48,704	\$56,914
Median Age	35.5	31	33

BUILDERS INCORPORATED
1081 South Glendale
Wichita, Kansas 67218
Buildersinc.com

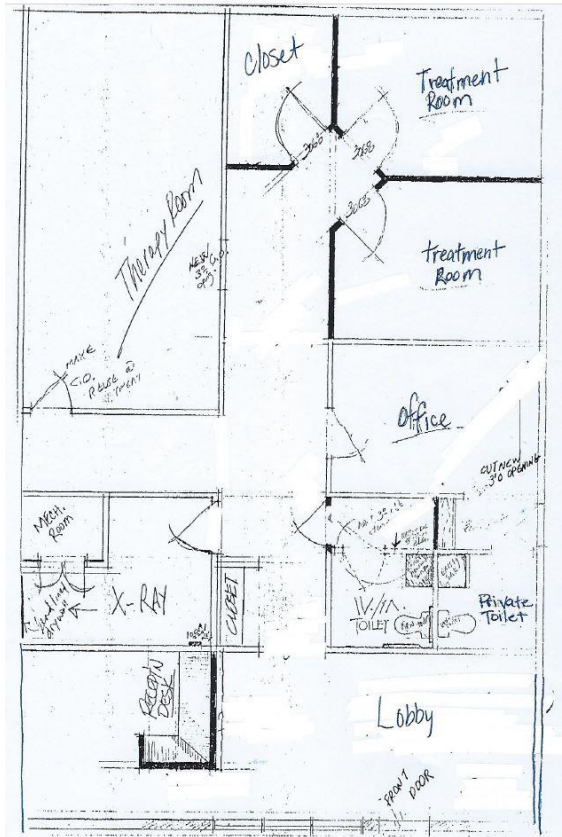
ESTABLISHED 1941

BUILDERS INCORPORATED

Wanda Whitworth 316.684.1400

Available Office Space

2312 W. Pawnee, Suite 104 Wichita, KS 67213



BUILDERS INCORPORATED
1081 South Glendale
Wichita, Kansas 67218
Buildersinc.com

ESTABLISHED 1941
BUILDERS INCORPORATED
Wanda Whitworth 316.684.1400