



**5,234 SF AVAILABLE**

3095 Presidential Drive

Suite 3 | Atlanta, Georgia 30340

**FOR LEASE**



## PROPERTY INFORMATION

<b>Total Size:</b>	5,234 SF
<b>Office:</b>	2,482 SF
<b>Warehouse:</b>	2,752 SF
<b>Loading:</b>	One (1) Dock High Door
<b>Clear Height:</b>	16' - 18'
<b>Available:</b>	June 1 <sup>st</sup> , 2026



For more information, please contact:

**TREY WEGHORST**

Office: (770) 264-9420  
Cell: (404) 276-9314  
tweghorst@apexindustrialre.com

**RECE MOORE**

Office: (404) 574-6311  
Cell: (770) 861-8140  
rmoore@apexindustrialre.com



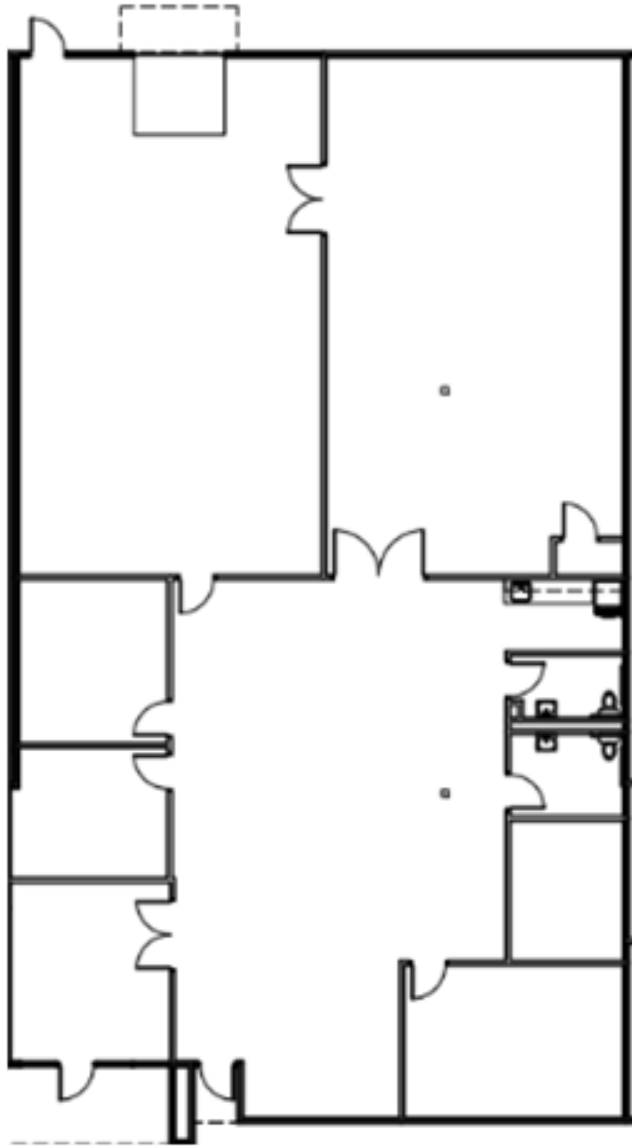
Although the information contained therein was provided from sources believed to be reliable, Apex Industrial makes no representation, expressed or implied, as to its accuracy and said information is subject to errors, omissions or changes.



**5,234 SF AVAILABLE**

3095 Presidential Drive  
Suite 3 | Atlanta, Georgia 30340

# FLOOR PLAN



For more information, please contact:

**TREY WEGHORST**

Office: (770) 264-9420  
Cell: (404) 276-9314  
tweghorst@apexindustrialre.com

**RECE MOORE**

Office: (404) 574-6311  
Cell: (770) 861-8140  
rmoore@apexindustrialre.com



Although the information contained therein was provided from sources believed to be reliable, Apex Industrial makes no representation, expressed or implied, as to its accuracy and said information is subject to errors, omissions or changes.