

**SPORTS FACILITY
PROPERTY FOR
SALE**

JAMESTOWN SPORTS COMPLEX

**5105 N HIGHWAY 67
FLORISSANT, MO 63034**



4400 CHOUTEAU AVE | ST. LOUIS, MO 63110
SALIENTREALTYGROUP.COM

TYLER ALMS

314.451.7897

TALMS@SALIENTREALTYGROUP.COM

SENIOR ASSOCIATE

No expressed or implied warranty or representation is made as to the accuracy of the information contained herein. This property is submitted subject to errors, omissions, change of price, withdrawal without notice, prior lease or sale and any other listing conditions imposed by the principals.

for
sale

5105
n hwy 67
florissant, mo 63034

51,042 sf
clear span
building

13.81
acre lot

45'
clear height

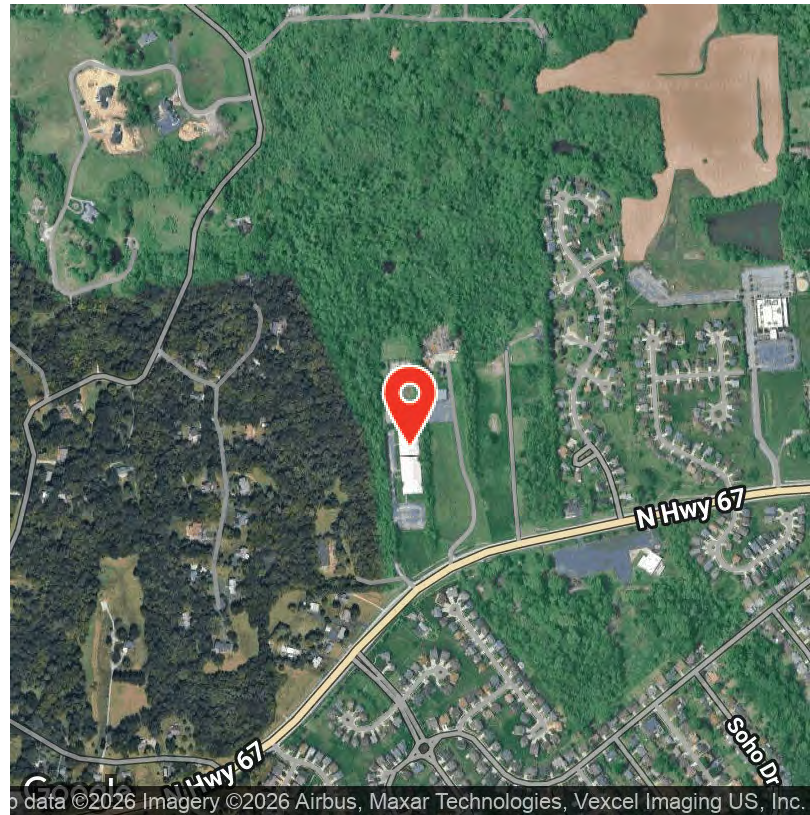


PROPERTY HIGHLIGHTS

- Building Size: ±51,042 SF
- Land Area: ±13.81 Acres
- Two ±24,000 SF Indoor Turf Arenas
- Well Below Replacement Cost
- Clear Span Warehouse Space - Ideal for flexible reconfiguration
- Ceiling Height: Up to 45' Clear
- Roll-Up Doors for loading and access
- Fantastic Highway Accessibility

OFFERING SUMMARY

Sale Price:	\$1,500,000
Lot Size:	13.81 Acres
Building Size:	51,042 SF
Price PSF:	\$29.38/SF
Price Per Acre:	\$108,616.00/AC



4400 CHOUTEAU AVE | ST. LOUIS, MO 63110
SALIENTREALTYGROUP.COM

TYLER ALMS

314.451.7897

TALMS@SALIENTREALTYGROUP.COM
SENIOR ASSOCIATE

Building Name	Jamestown Sports Complex
Property Type	Sports Facility
Property Subtype	Warehouse/Distribution
APN	06G540044
Zoning	NU (Commercial)
Building Size	51,042 SF
Lot Size	13.81 Acres
Building Class	C
Year Built	1974
Number of Buildings	1
Clear Height	45'
2 Turf Arenas	24,000 SF
Drive-in Doors	2
Oversized Drive-In	1

5105 N Highway 67 offers a rare combination of size, access, and versatility—ideal for redevelopment, new construction, or continued use as a sports/training facility. Situated on ±13.81 acres in Florissant, this property features a ±51,042 SF building with two large indoor turf arenas, currently configured for recreational use but adaptable to a variety of applications.

The site offers clear span warehouse space, high ceilings (45' clear), and significant parking capacity, making it well-suited for: Reactivation as Indoor Sports Facility

Training / Tournament Venue

Event or Assembly Space

Redevelopment for Warehouse / Distribution / Manufacturing Use

Build-to-Suit or Ground-Up Construction

The location along a major highway corridor offers both visibility and accessibility—ideal for attracting business traffic, customers, or logistics access.



Location Description:

Strategically located along North Highway 67 (Lindbergh Blvd) in Florissant, MO, this property offers excellent visibility and access in a high-traffic corridor of North St. Louis County. Situated just minutes from I-270 and I-170, the site provides direct connectivity to the greater St. Louis metro, Lambert-St. Louis International Airport, and key industrial and residential areas.

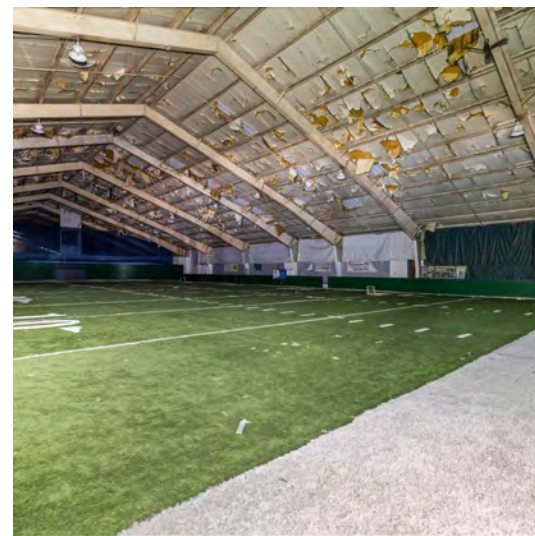
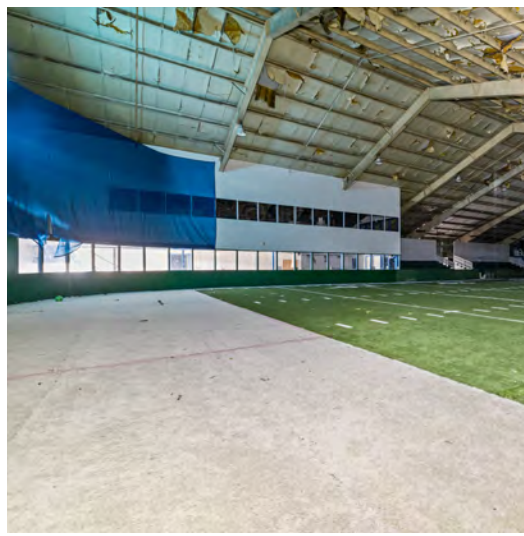


4400 CHOUTEAU AVE | ST. LOUIS, MO 63110
SALIENTREALTYGROUP.COM

TYLER ALMS

314.451.7897

TALMS@SALIENTREALTYGROUP.COM
SENIOR ASSOCIATE



4400 CHOUTEAU AVE | ST. LOUIS, MO 63110
SALIENTREALTYGROUP.COM

TYLER ALMS

314.451.7897

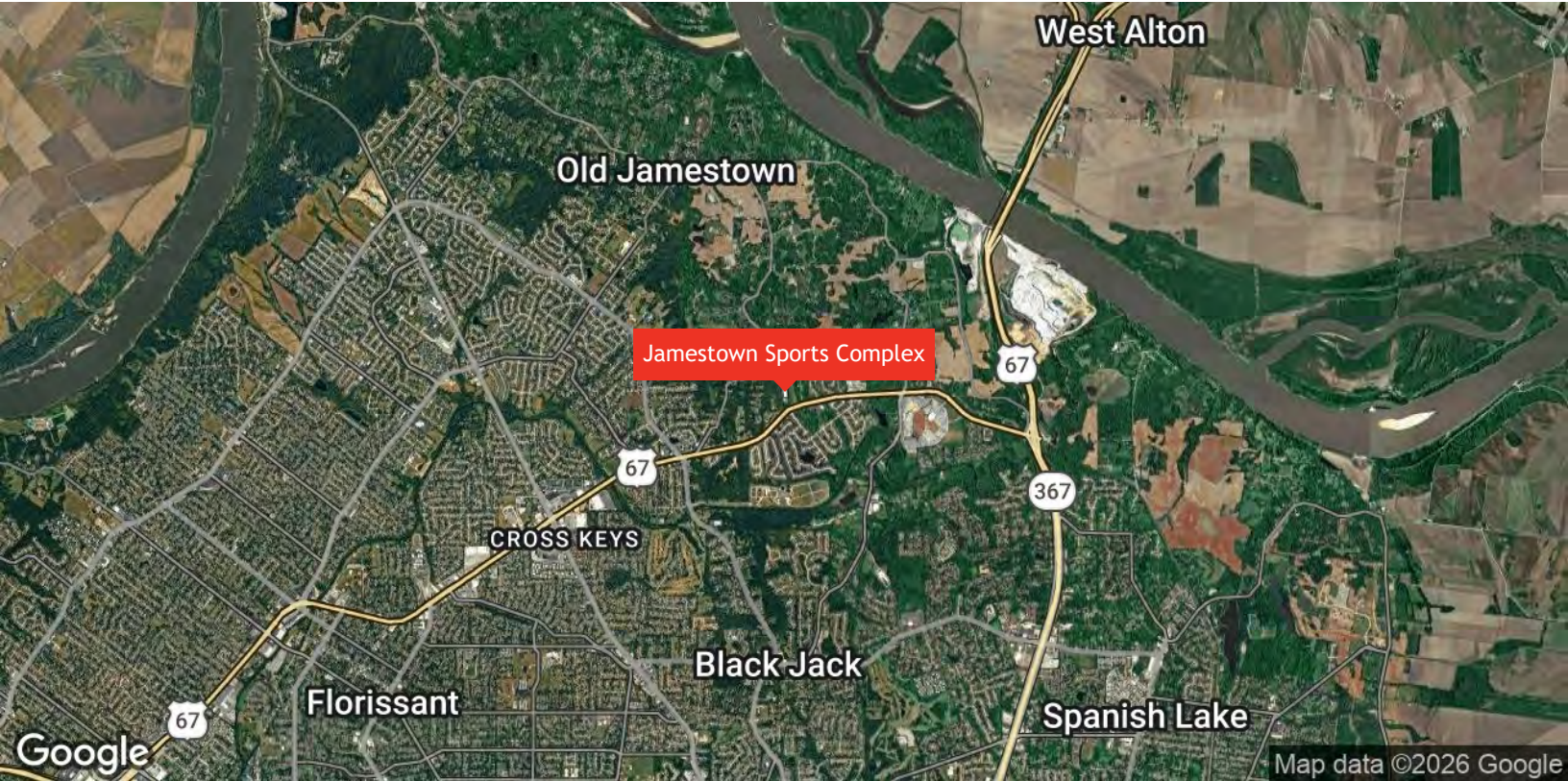
TALMS@SALIENTREALTYGROUP.COM
SENIOR ASSOCIATE

No expressed or implied warranty or representation is made as to the accuracy of the information contained herein. This property is submitted subject to errors, omissions, change of price, withdrawal without notice, prior lease or sale and any other listing conditions imposed by the principals.



Jamestown Sports Complex

Imagery ©2026 Airbus, Maxar Technologies, Vexcel Imaging US, Inc.



Jamestown Sports Complex

Map data ©2026 Google



4400 CHOUTEAU AVE | ST. LOUIS, MO 63110
SALIENTREALTYGROUP.COM

TYLER ALMS

314.451.7897

TALMS@SALIENTREALTYGROUP.COM
SENIOR ASSOCIATE

No expressed or implied warranty or representation is made as to the accuracy of the information contained herein. This property is submitted subject to errors, omissions, change of price, withdrawal without notice, prior lease or sale and any other listing conditions imposed by the principals.