



FOR LEASE | RATE REDUCED

Warehouse & Showroom

495 Highway 99
Eugene OR 97402

DETAILS

- 4,200 square feet
- Warehouse area with two 12'x14' loading doors
- Retail showroom with office and breakroom
- Two restrooms
- Zoned C-2 (Community Commercial)
- \$8.00 PSF annually, triple net (\$1.00 per square foot annual triple nets)

Evans
Elder
Brown &
Seubert

COMMERCIAL REAL ESTATE

Jeff Elder
jeff@eebcre.com

541.345.4860

Licensed in the State of Oregon.

Overview

495 Highway 99 | Eugene OR 97402

Evans
Elder
Brown &
Seubert

COMMERCIAL REAL ESTATE

CONTACT

Jeff
Elder

jeff@eebcre.com

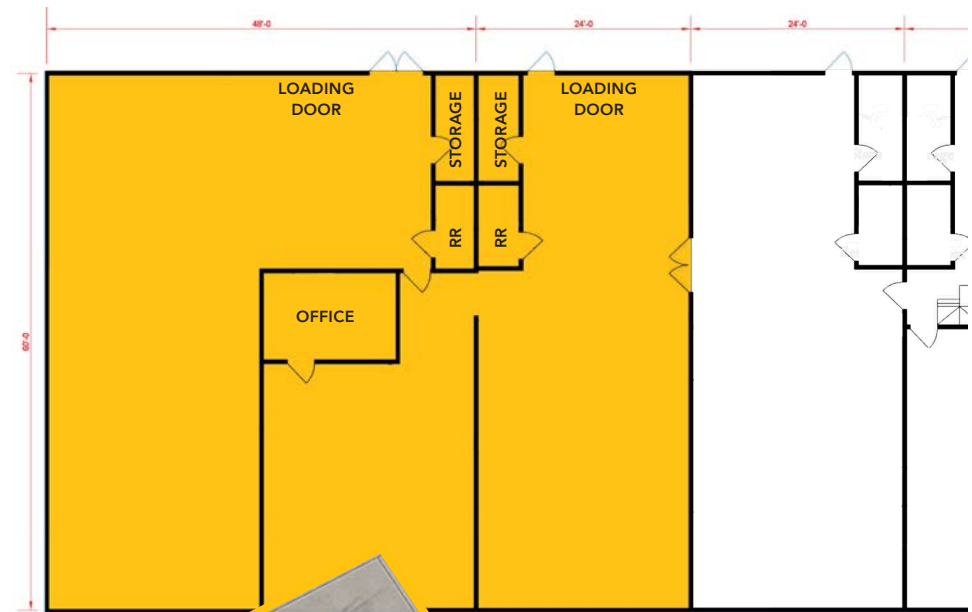
541.345.4860

Licensed in the
State of Oregon.

Description

4,200 SQUARE FEET

- Warehouse area with two 12'x14' loading doors
- Retail showroom with office and breakroom
- Two restrooms
- Zoned C-2 (Community Commercial)
- \$8.00 PSF annually, triple net
(\$1.00 per square foot annual triple nets)



Photographs

495 Highway 99 | Eugene OR 97402

Evans
Elder
Brown &
Seubert

COMMERCIAL REAL ESTATE

CONTACT

Jeff
Elder

jeff@eebcre.com

541.345.4860

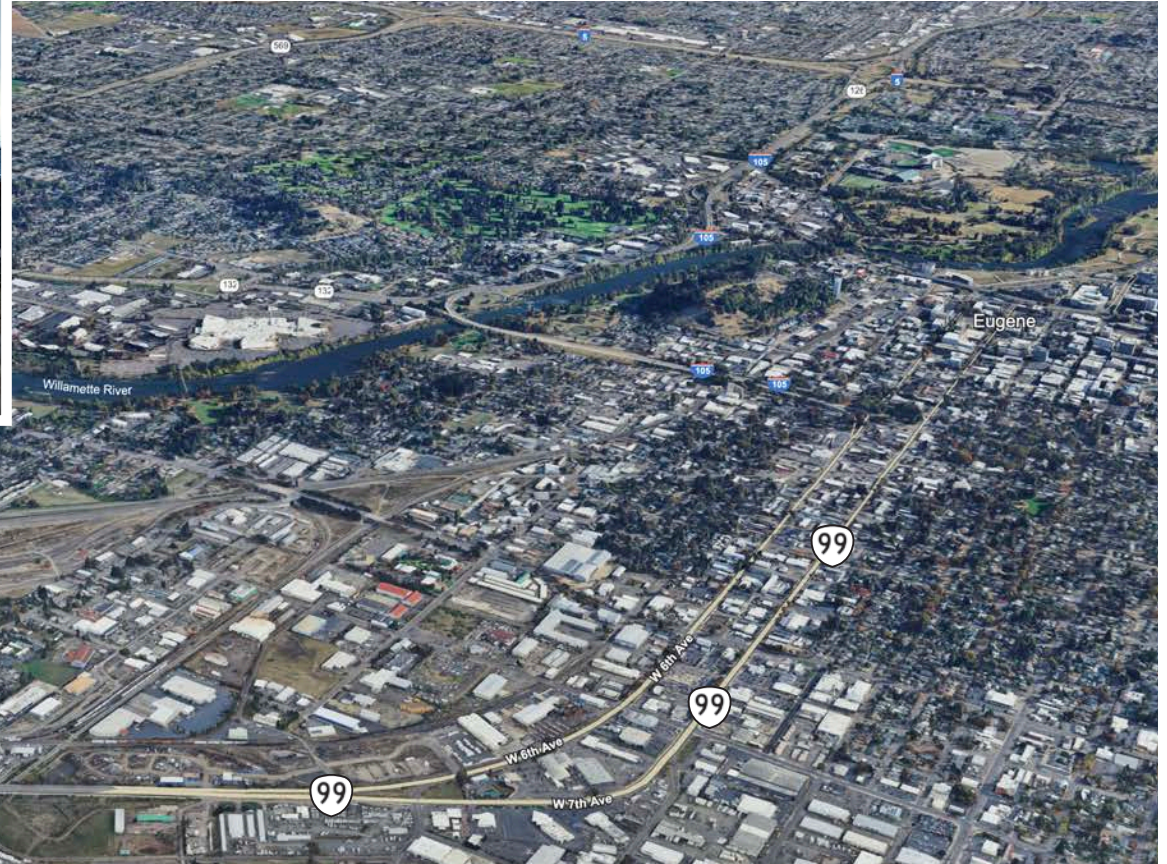
Licensed in the
State of Oregon.



The information in this package was gathered from sources deemed reliable, however Evans Elder Brown & Seubert makes no representation or warranty of the accuracy of the information. Any buyer or tenant considering a purchase or lease of this property should confirm any and all information relied upon in making the decision to purchase or lease prior to finalizing the transaction and bears the risk of all inaccuracies.

Location

495 Highway 99 | Eugene OR 97402



Evans
Elder
Brown &
Seubert

COMMERCIAL REAL ESTATE

CONTACT

541.345.4860

Jeff Elder

jeff@eebcre.com