

BELCARO PLACE

3801 E Florida Ave
Denver, CO 80210

Office For Lease



Leasing Information:

Andrew Piepgras
303.882.6591
apiepgras@lpc.com

Lincoln

2000 S Colorado Blvd
Tower 3, Suite 825
Denver, CO 80222

www.lpc.com

BELCARO PLACE

3801 E Florida Ave | Denver, CO 80210

Office For Lease

784 - 13,035 SF



Property Highlights

- 153,985 SF
- 9-Story
- Typical Floorplate - 17,396 RSF
- 3.00/1,000 SF Parking Ratio
- Conference Facility & Fitness Center
- Convenient access to I-25 via S Colorado Blvd or University Blvd

Availabilities

Size

Lease Rate

Date Available

Suite 500	784 SF	Negotiable	Now
Suite 503	1,538 SF	Negotiable	Now
Suite 507	1,465 SF	Negotiable	Now
Suite 512	2,326 SF	Negotiable	Now
Suite 815	13,035 SF	Negotiable	January 1, 2027
Suite 903	1,176 SF	Negotiable	Now

Andrew Piepgras

303.882.6591
apiepgras@lpc.com

Lincoln

BELCARO PLACE

3801 E Florida Ave | Denver, CO 80210



Andrew Piepgras

303.882.6591
apiepgras@lpc.com

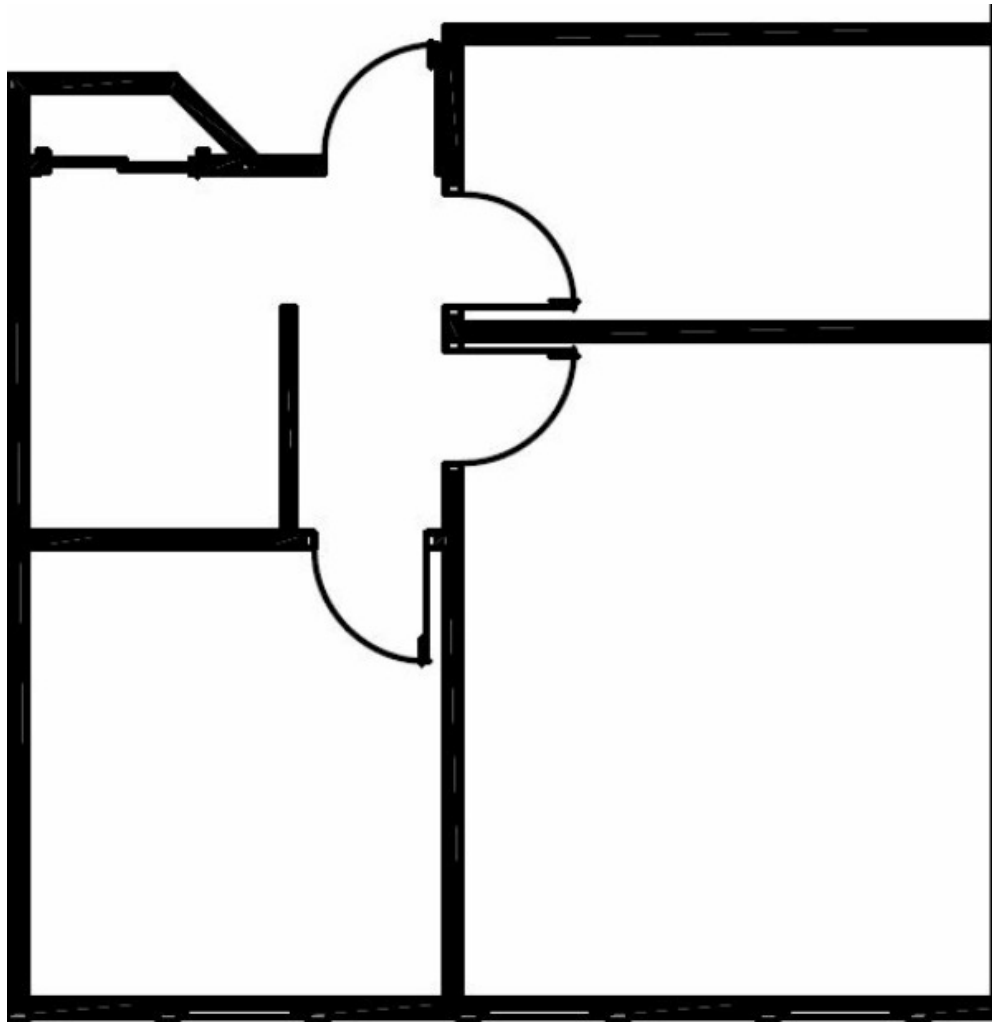
Lincoln

BELCARO PLACE

3801 E Florida Ave | Denver, CO 80210

Suite 500

784 SF



Suite

Suite 500

Size

784 SF

Andrew Piepgras

303.882.6591
apiepgras@lpc.com

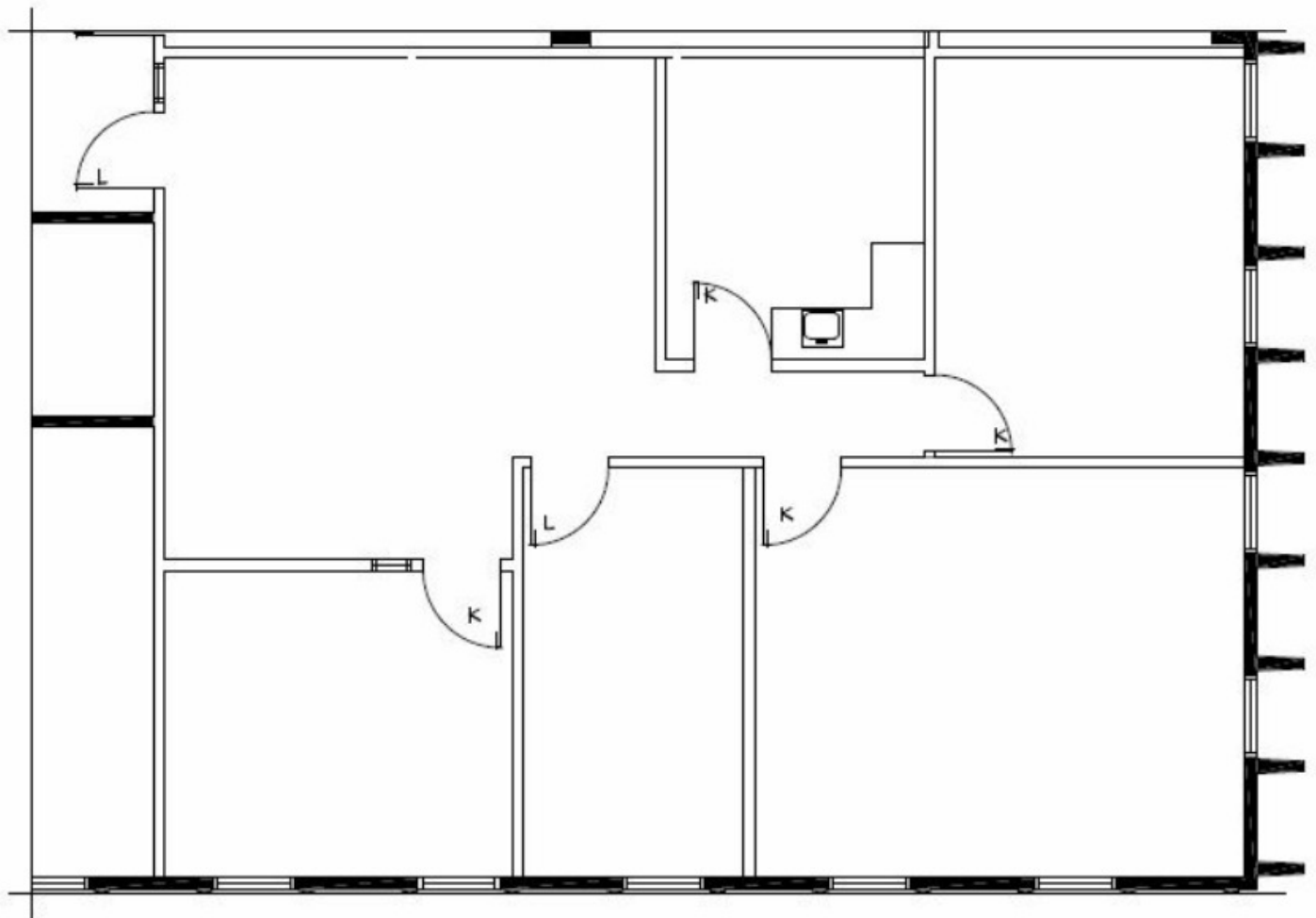
Lincoln

BELCARO PLACE

3801 E Florida Ave | Denver, CO 80210

Suite 503

1,538 SF



Suite

Suite 503

Size

1,538 SF

Andrew Piepgras

303.882.6591
apiepgras@lpc.com

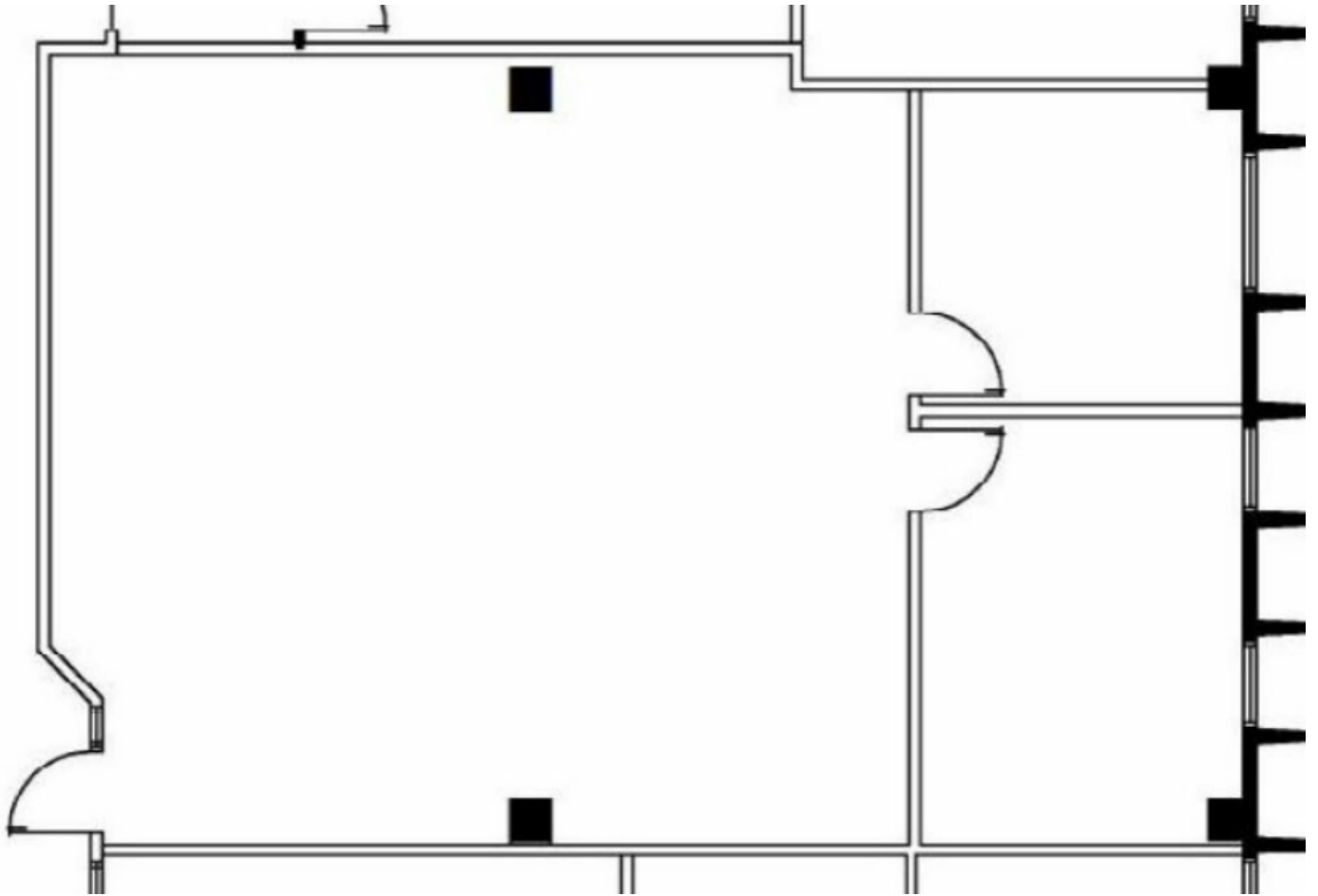
Lincoln

BELCARO PLACE

3801 E Florida Ave | Denver, CO 80210

Suite 507

1,465 SF



Suite

Suite 507

Size

1,465 SF

Andrew Piepgras

303.882.6591
apiepgras@lpc.com

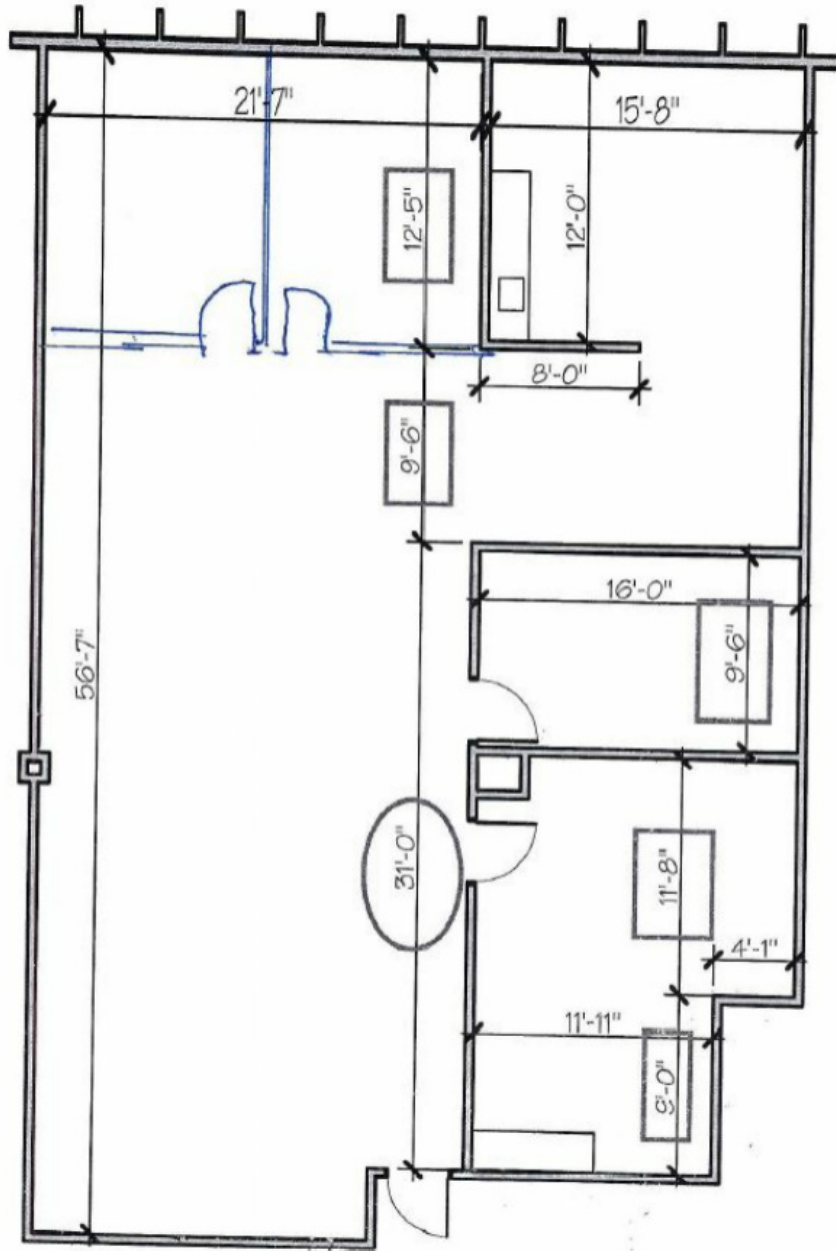
Lincoln

BELCARO PLACE

3801 E Florida Ave | Denver, CO 80210

Suite 512

2,326 SF



Suite

Suite 512

Size

2,326 SF

Andrew Piepgras

303.882.6591
apiepgras@lpc.com

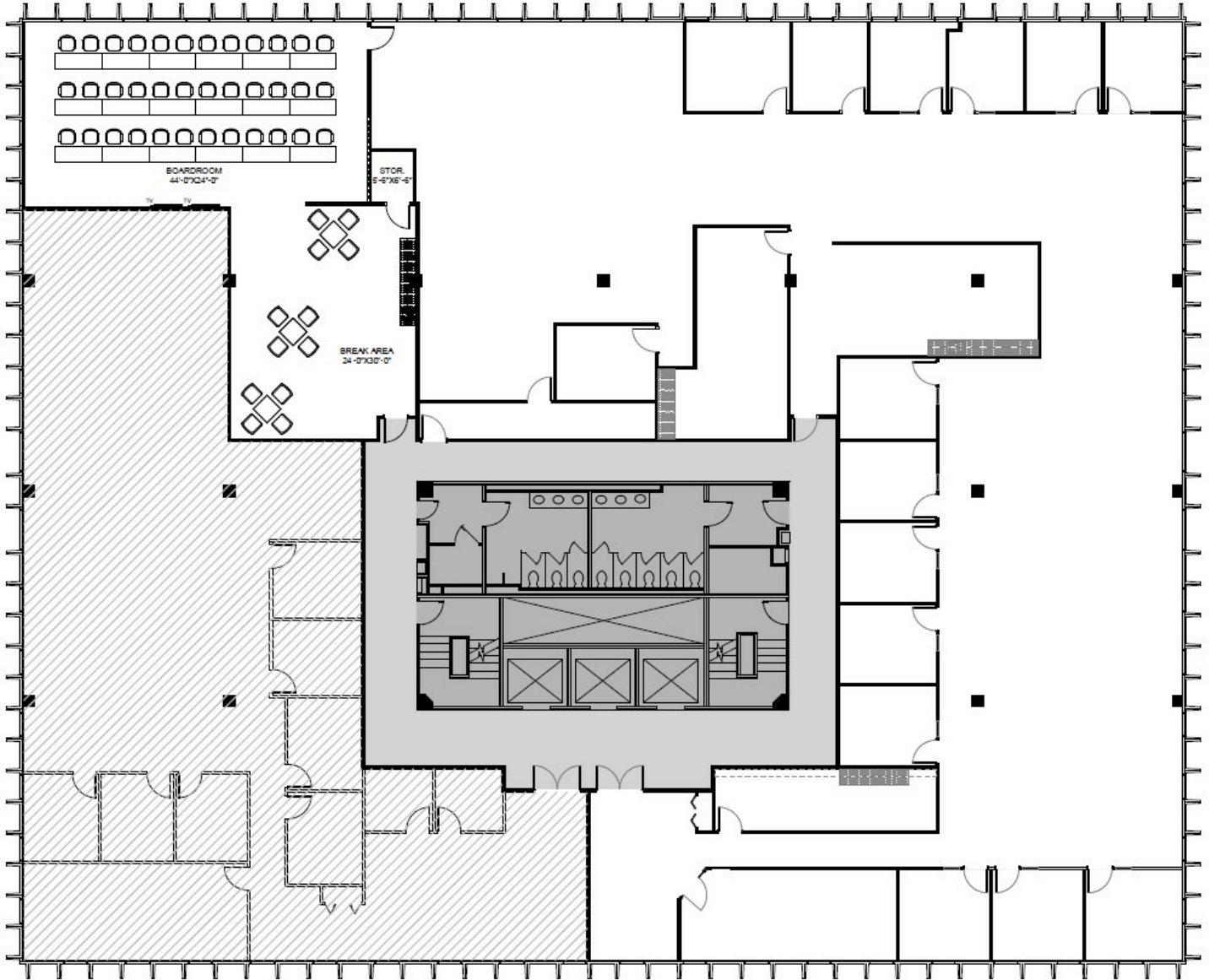
Lincoln

BELCARO PLACE

3801 E Florida Ave | Denver, CO 80210

Suite 815

13,035 SF



Suite

Suite 815

Size

13,035 SF

Andrew Piepgras

303.882.6591
apiepgras@lpc.com

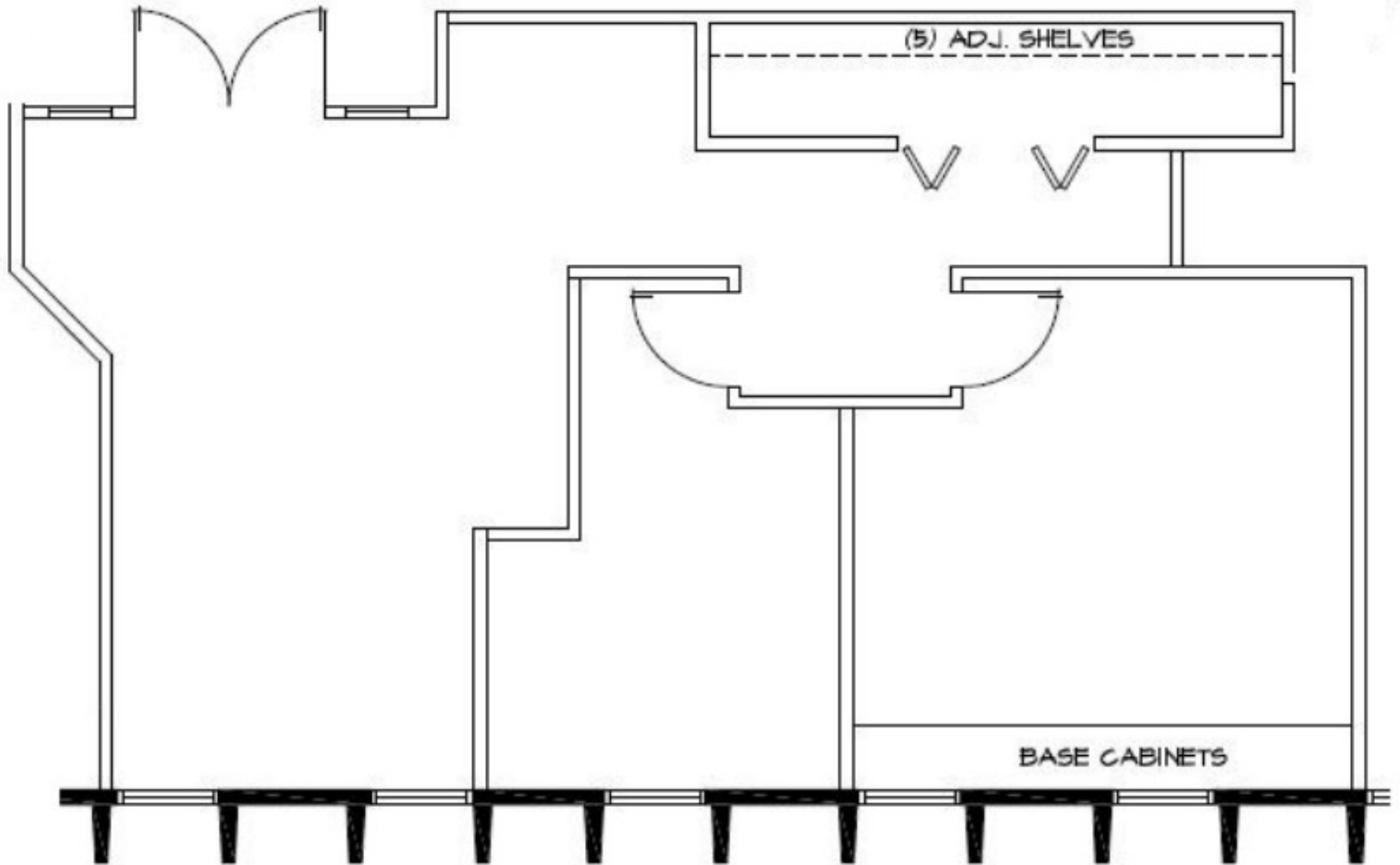
Lincoln

BELCARO PLACE

3801 E Florida Ave | Denver, CO 80210

Suite 903

1,176 SF



Suite

Suite 903

Size

1,176 SF

Andrew Piepgras

303.882.6591
apiepgras@lpc.com

Lincoln



BELCARO PLACE

3801 E Florida Ave
Denver, CO 80210

Leasing Information:

Andrew Piepgras
303.882.6591
apiepgras@lpc.com

Lincoln

2000 S Colorado Blvd
Tower 3, Suite 825
Denver, CO 80222

www.lpc.com