

1831 Scherer Parkway

FOR LEASE

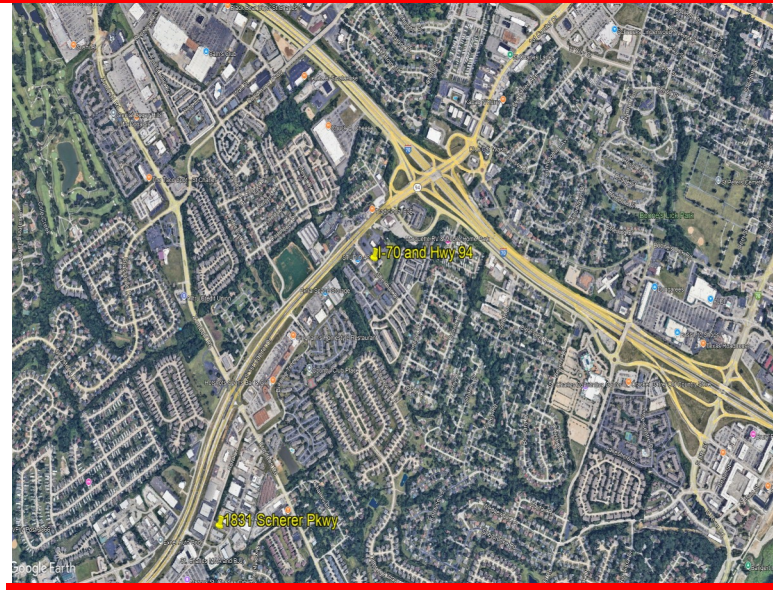
St Charles, MO 63303



OFFICE / WAREHOUSE SPACE

- 2,240 S/F Office/Warehouse space
- 875 S/F Showroom, 35' x 25'
- 837 S/F Warehouse, 31' x 27'
- 200 S/F Private Office, 20' X 10'. The balance of space is bathroom/hallway and mechanical.
- 10' x 10' Dock Door
- Professional glass storefront
- Fully Climate Controlled, New HVAC Aug/2025
- 10' x 10' Dock Door
- Easy/quick access to Highway 70 & Highway 364. Just a mile south of I-70 on Hwy 94
- **Asking Price-\$2,613 Per Month**

(Gross Lease)



Daw Realty Group, LLC
Harry Daw
314.471.2909
dawrealtygroup@gmail.com