



FOR LEASE

VERSATILE CONFIGURATION WITH HEAVY POWER
± 157,500 SF Office, Warehouse, &
Manufacturing Facility

124 Carson Road North, Birmingham, AL 35215

Tripp Alexander, CCIM, SIOR

Partner, Dir. of Industrial Services
+1 205 949 5989
tripp.alexander@colliers.com

Joe Azar, CCIM

Senior Associate
+1 205 949 2692
joe.azar@colliers.com

Miller Conaway

Associate
+1 205 305 4302
miller.conaway@colliers.com

Colliers | Alabama

880 Montclair Road, Suite 250
Birmingham, AL 35213
+1 205 445 0955



Property Overview

124 Carson Road N | Birmingham, AL

Office, Warehouse, & Manufacturing Facility

Address: 124 Carson Road N, Birmingham, AL 35215

Building Size (SF): ± 157,500 SF

Primary Office Size (SF): ± 7,000

Site Area: ± 27.53 Acres

Zoning: I-4, Jefferson County

Loading: Six (6) dock-high with locks, two (2) drive-in and one (1) covered loading platform with leveler

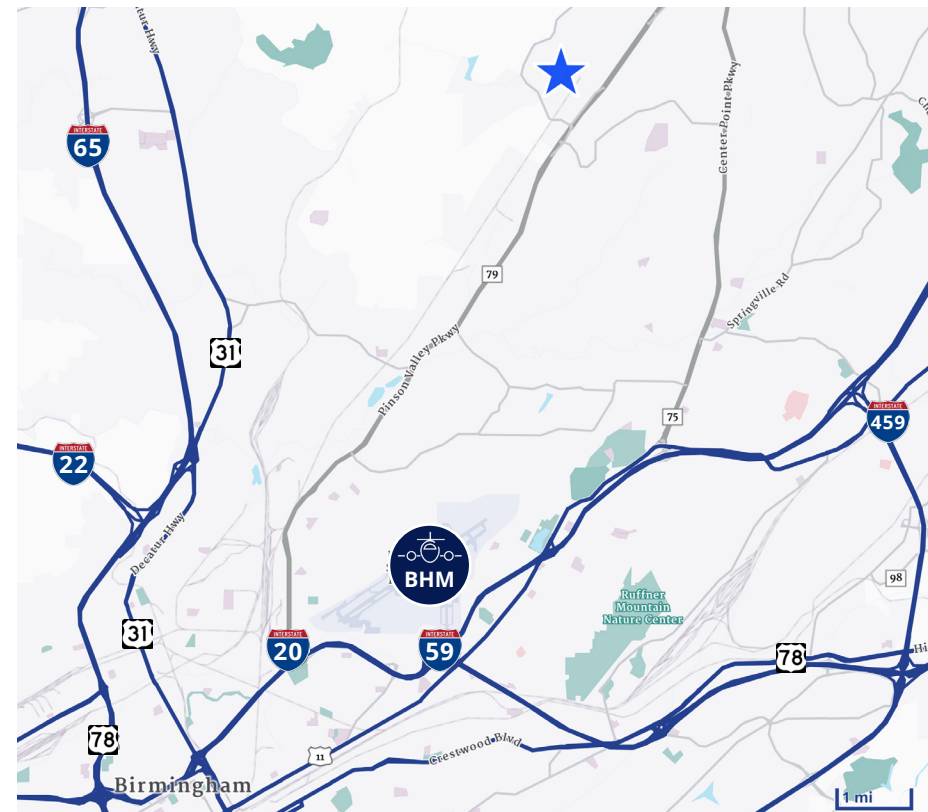
Ceiling Heights: Up to 23'

Cranes: Three (3) cranes: 1/2 ton, 1 ton & 3 ton

Electrical: 3-Phase 2,000a; 277/480v 3,500 KVA; 277/480v 3,750 KVA (two transformers)

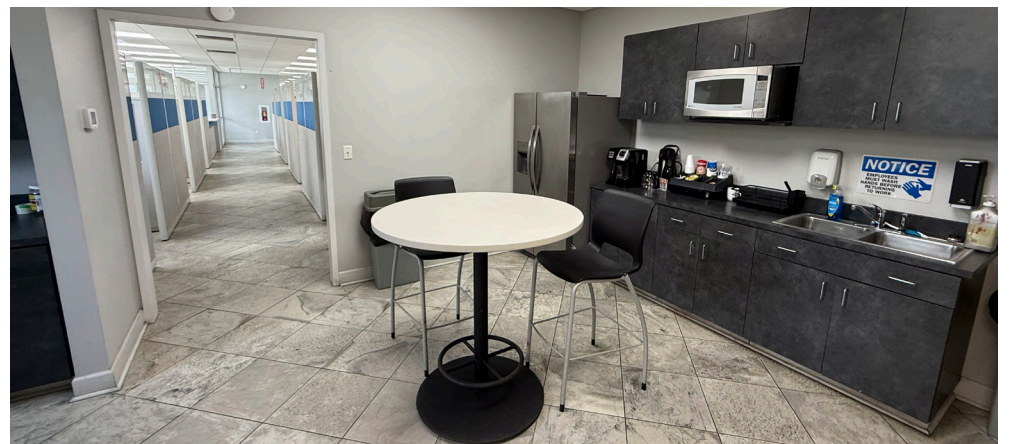
Features:

- Office area includes private offices, conference room, open work area, break room, and restrooms
- Wet sprinkler system
- New roof in 2013 with a 20-year warranty
- Floors: Reinforced concrete with minimum of 10"
- 152 auto parking spaces
- Originally served by two CSX rail spurs. Potential for spurs to be re-installed.
- 14 acres excess unimproved land available
- Multiple areas for potential outside storage



Property Photos

124 Carson Road N | Birmingham, AL





For Pricing:
Contact Brokers

13.9

MILES

Downtown
Birmingham

12

MILES

Birmingham
Shuttlesworth
Airport

14

MILES

I-65

Tripp Alexander, CCIM, SIOR
Partner | Director of Industrial Services
+1 205 949 5989
tripp.alexander@colliers.com

Joe Azar, CCIM
Senior Associate
+1 205 949 2692
joe.azar@colliers.com

Miller Conaway
Associate
+1 205 305 4302
miller.conaway@colliers.com

Colliers Alabama
880 Montclair Road, Suite 250
Birmingham, AL 35213
+1 205 445 0955



Colliers