

605-713 N. COURTHOUSE RD.

RICHMOND, VA 23236

**WINDSOR
EXECUTIVE
CENTER**

**OFFICE SPACE
FOR LEASE**

For information, contact:

Matt Anderson

T 804.267.7248

F 804.320.4839

matt.anderson@cbre.com

Barry Hofheimer

T 804.267.7250

F 804.320.4839

barry.hofheimer@cbre.com

CB Richard Ellis

1801 Bayberry Court, Suite 200

Richmond, Virginia 23226

T 804.320.5500

F 804.320.4839

www.cbre.com/richmond



PROPERTY FEATURES:

- A seven building office park, totaling approximately 49,026 SF
- | | | |
|-----------------------|-------------|--------------------------|
| 605 N. Courthouse Rd. | Suite 202 | 2,500-5,000 SF available |
| 611 N. Courthouse Rd. | Suite 200 | 2,122 SF available |
| 701 N. Courthouse Rd. | Suite A & B | 2,050 SF available |
| 703 N. Courthouse Rd. | | LEASED |
| 707 N. Courthouse Rd. | | LEASED |
| 711 N. Courthouse Rd. | | FOR SALE \$1,170,000 |
| 713 N. Courthouse Rd. | | LEASED |
- Located at the intersection of Southlake Boulevard and Courthouse Road, less than 1 mile from Midlothian Turnpike

©2008, CB Richard Ellis, Inc. We obtained the information above from sources we believe to be reliable. However, we have not verified its accuracy and make no guarantee, warranty or representation about it. It is submitted subject to the possibility of errors, omissions, change of price, rental or other conditions, prior sale, lease or financing, or withdrawal without notice. We include projections, opinions, assumptions or estimates for example only, and they may not represent current or future performance of the property. You and your tax and legal advisors should conduct your own investigation of the property and transaction.

CBRE | Richmond
CB RICHARD ELLIS

605-713 N. COURTHOUSE RD.

RICHMOND, VA 23236

**WINDSOR
EXECUTIVE
CENTER**

**OFFICE SPACE
FOR LEASE**

For information, contact:

Matt Anderson

T 804.267.7248

F 804.320.4839

matt.anderson@cbre.com

Barry Hofheimer

T 804.267.7250

F 804.320.4839

barry.hofheimer@cbre.com

CB Richard Ellis

1801 Bayberry Court, Suite 200

Richmond, Virginia 23226

T 804.320.5500

F 804.320.4839

www.cbre.com/richmond

605 N. Courthouse Road



611 N. Courthouse Road



©2008, CB Richard Ellis, Inc. We obtained the information above from sources we believe to be reliable. However, we have not verified its accuracy and make no guarantee, warranty or representation about it. It is submitted subject to the possibility of errors, omissions, change of price, rental or other conditions, prior sale, lease or financing, or withdrawal without notice. We include projections, opinions, assumptions or estimates for example only, and they may not represent current or future performance of the property. You and your tax and legal advisors should conduct your own investigation of the property and transaction.

CBRE | Richmond
CB RICHARD ELLIS

605-713 N. COURTHOUSE RD.

RICHMOND, VA 23236

**WINDSOR
EXECUTIVE
CENTER**

**OFFICE SPACE
FOR LEASE**

For information, contact:

Matt Anderson

T 804.267.7248

F 804.320.4839

matt.anderson@cbre.com

Barry Hofheimer

T 804.267.7250

F 804.320.4839

barry.hofheimer@cbre.com

CB Richard Ellis

1801 Bayberry Court, Suite 200

Richmond, Virginia 23226

T 804.320.5500

F 804.320.4839

www.cbre.com/richmond

701 N. Courthouse Road



703 N. Courthouse Road



©2008, CB Richard Ellis, Inc. We obtained the information above from sources we believe to be reliable. However, we have not verified its accuracy and make no guarantee, warranty or representation about it. It is submitted subject to the possibility of errors, omissions, change of price, rental or other conditions, prior sale, lease or financing, or withdrawal without notice. We include projections, opinions, assumptions or estimates for example only, and they may not represent current or future performance of the property. You and your tax and legal advisors should conduct your own investigation of the property and transaction.

CBRE | Richmond
CB RICHARD ELLIS

605-713 N. COURTHOUSE RD.

RICHMOND, VA 23236

**WINDSOR
EXECUTIVE
CENTER**

**OFFICE SPACE
FOR LEASE**

For information, contact:

Matt Anderson

T 804.267.7248

F 804.320.4839

matt.anderson@cbre.com

Barry Hofheimer

T 804.267.7250

F 804.320.4839

barry.hofheimer@cbre.com

CB Richard Ellis

1801 Bayberry Court, Suite 200

Richmond, Virginia 23226

T 804.320.5500

F 804.320.4839

www.cbre.com/richmond

707 N. Courthouse Road



711 N. Courthouse Road



©2008, CB Richard Ellis, Inc. We obtained the information above from sources we believe to be reliable. However, we have not verified its accuracy and make no guarantee, warranty or representation about it. It is submitted subject to the possibility of errors, omissions, change of price, rental or other conditions, prior sale, lease or financing, or withdrawal without notice. We include projections, opinions, assumptions or estimates for example only, and they may not represent current or future performance of the property. You and your tax and legal advisors should conduct your own investigation of the property and transaction.

CBRE | Richmond
CB RICHARD ELLIS

605-713 N. COURTHOUSE RD.

RICHMOND, VA 23236

**WINDSOR
EXECUTIVE
CENTER**

**OFFICE SPACE
FOR LEASE**

For information, contact:

Matt Anderson

T 804.267.7248

F 804.320.4839

matt.anderson@cbre.com

Barry Hofheimer

T 804.267.7250

F 804.320.4839

barry.hofheimer@cbre.com

CB Richard Ellis

1801 Bayberry Court, Suite 200

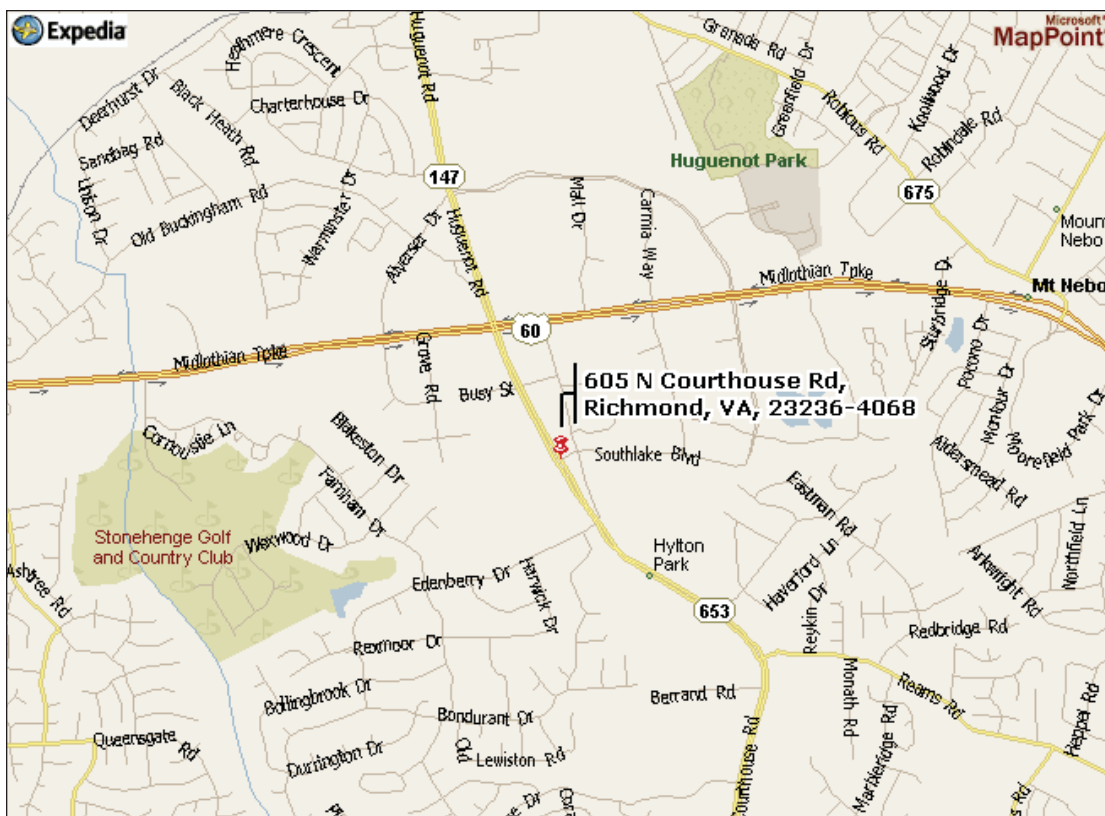
Richmond, Virginia 23226

T 804.320.5500

F 804.320.4839

www.cbre.com/richmond

713 N. Courthouse Road



©2008, CB Richard Ellis, Inc. We obtained the information above from sources we believe to be reliable. However, we have not verified its accuracy and make no guarantee, warranty or representation about it. It is submitted subject to the possibility of errors, omissions, change of price, rental or other conditions, prior sale, lease or financing, or withdrawal without notice. We include projections, opinions, assumptions or estimates for example only, and they may not represent current or future performance of the property. You and your tax and legal advisors should conduct your own investigation of the property and transaction.

CBRE | Richmond
CB RICHARD ELLIS

605-713 N. COURTHOUSE RD.

RICHMOND, VA 23236

WINDSOR
EXECUTIVE
CENTER

OFFICE SPACE
FOR LEASE

For information, contact:

Matt Anderson

T 804.267.7248

F 804.320.4839

matt.anderson@cbre.com

Barry Hofheimer

T 804.267.7250

F 804.320.4839

barry.hofheimer@cbre.com

CB Richard Ellis

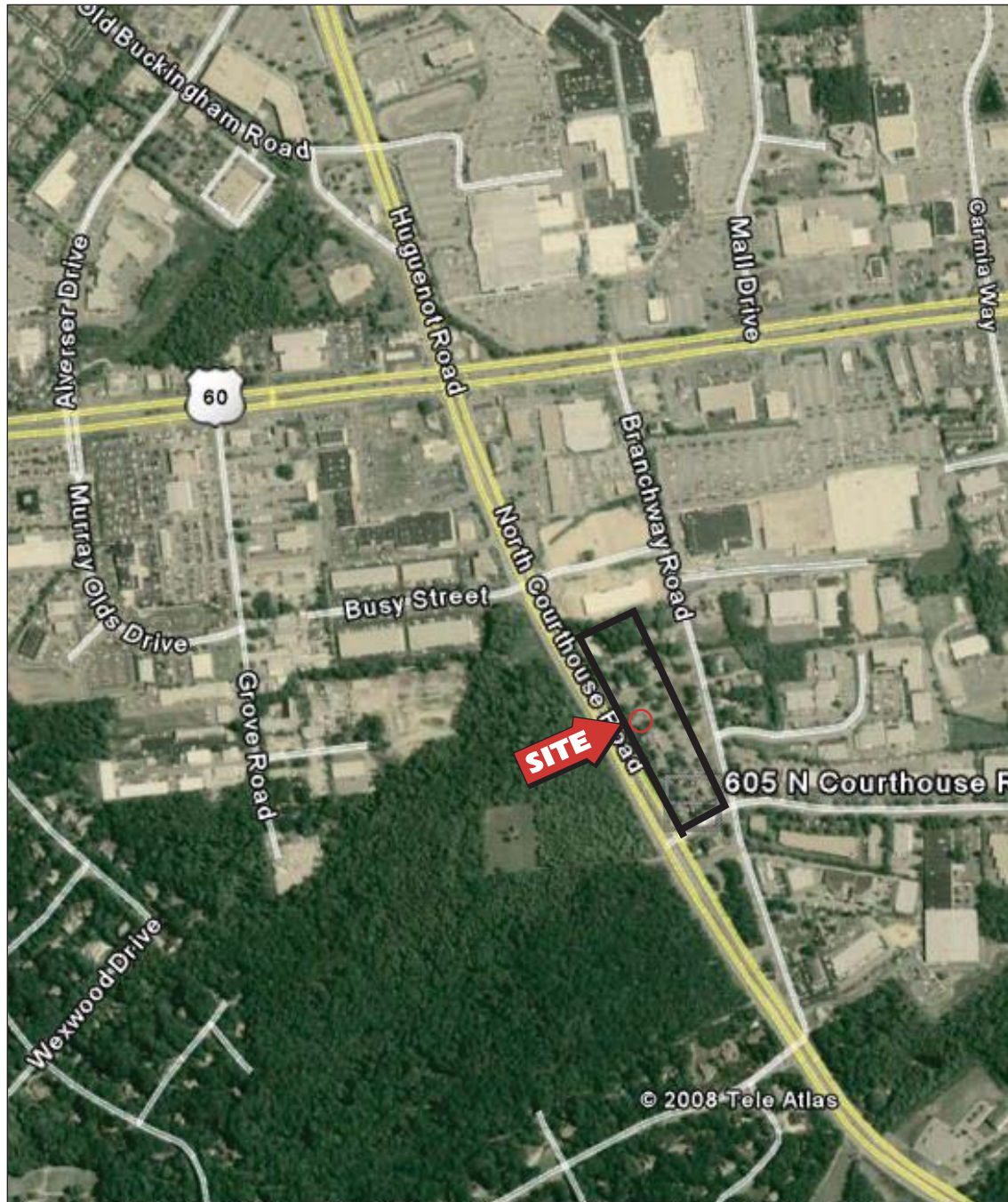
1801 Bayberry Court, Suite 200

Richmond, Virginia 23226

T 804.320.5500

F 804.320.4839

www.cbre.com/richmond



©2008, CB Richard Ellis, Inc. We obtained the information above from sources we believe to be reliable. However, we have not verified its accuracy and make no guarantee, warranty or representation about it. It is submitted subject to the possibility of errors, omissions, change of price, rental or other conditions, prior sale, lease or financing, or withdrawal without notice. We include projections, opinions, assumptions or estimates for example only, and they may not represent current or future performance of the property. You and your tax and legal advisors should conduct your own investigation of the property and transaction.

CBRE | Richmond
CB RICHARD ELLIS