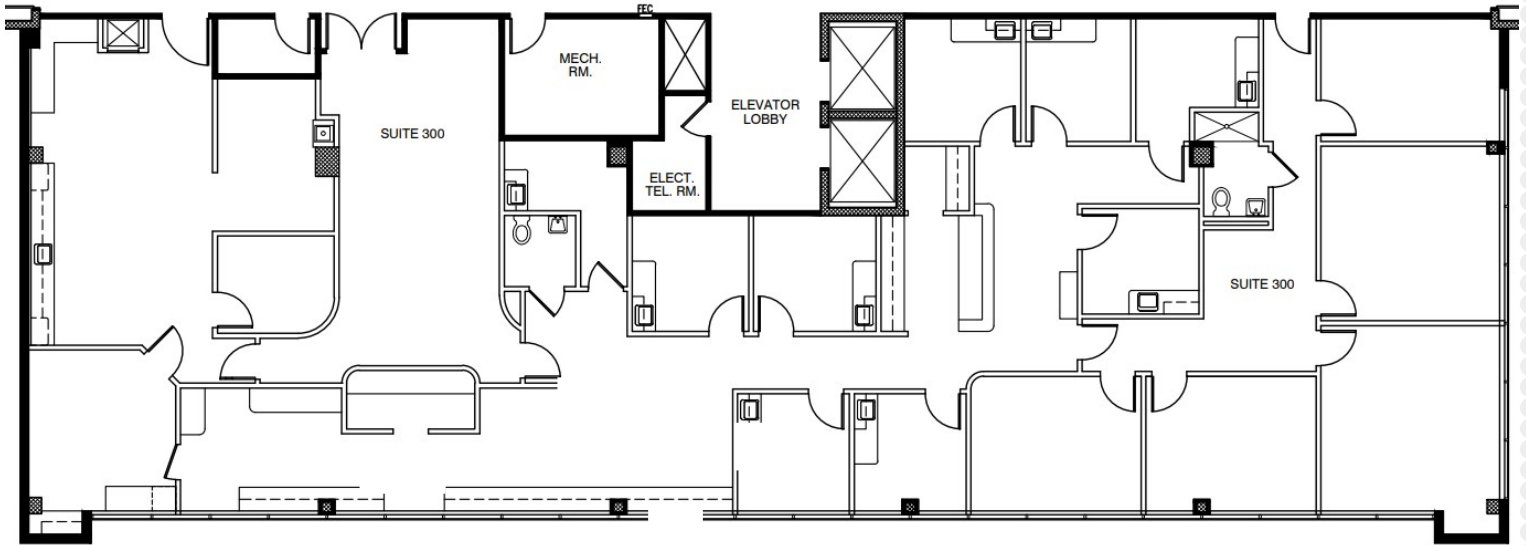


PALMS OF PASADENA MEDICAL OFFICE BUILDING

1615 PASADENA AVENUE SOUTH
ST. PETERSBURG, FL 33707

Suite 300 | 5,544 SF |



Scan for a virtual walk
through of the suite



Click for a virtual walk through



Building owned and managed by
HEALTHCARE REALTY

BRIAN BREEDING, CCIM
Managing Director
+1 813 204 5369
brian.breeding@cushwake.com

WENDY GIFFIN
Executive Director
+1 727 599 3799
wendy.giffin@cushwake.com