



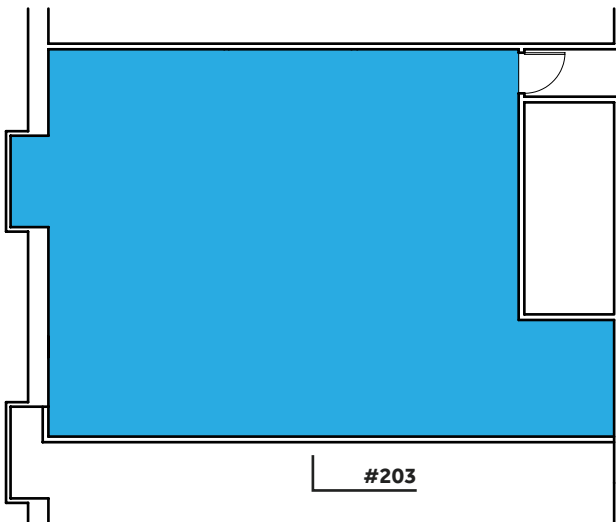
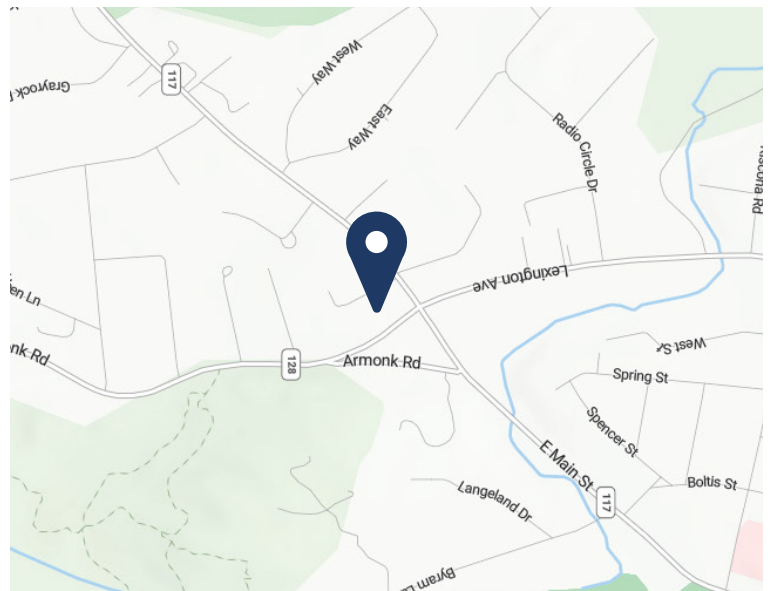
DIAMOND
PROPERTIES

MEDICAL SPACE FOR LEASE

666 LEXINGTON AVE., MT KISCO, NY

SUITE #203 1,515 RSF

- Built out as Medical Space
- 24/7 Card Access
- Close Proximity to Area Amenities and Hospitals
- Ample On-site Parking
- Easy Access to Public Transport and Metro North Train Station
- Close Proximity to I-684, Saw Mill River Parkway, and Downtown Mt. Kisco



CONTACT:

MATT MASTRIANNI 914-688-1396
mmastrianni@dpmgt.com

MARK BLANDFORD 914-773-6242
mark@dpmgt.com

The information contained herein has been obtained through sources deemed reliable but cannot be guaranteed as to its accuracy. Any information of special interest should be obtained through independent verification.