



BILTMORE
TALON CENTER

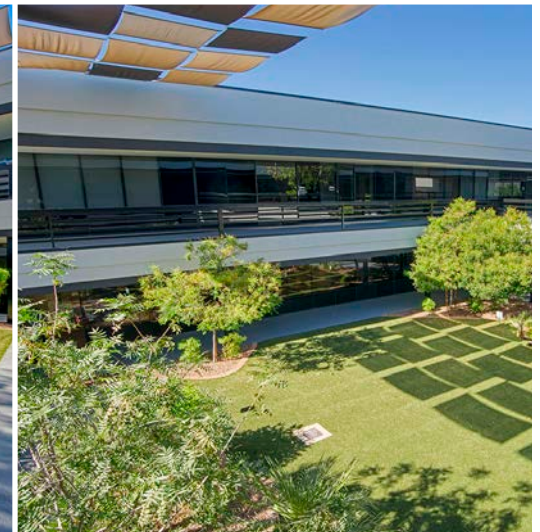


OFFICE / MEDICAL SPACE FOR LEASE
3333 E CAMELBACK RD, PHOENIX, AZ 85018



PROPERTY OVERVIEW

- Parking Ratio: 5/1,000 SF
- Total Project Size: ±96,248 SF
- 24-Hour Access
- Monument Signage
- Abundant Natural Light
- Great Covered Outdoor Seating
- Prestigious Camelback Corridor Location
- Abundant Covered Canopy Parking
- Restaraunt Coming Soon
- We are experiencing on average a 37% increase in business for all new tenants
- 450 parking spaces feet away from your office



LOCATION

BILTMORE FASHION CENTER

BILTMORE PLAZA SHOPPING CENTER

SAFEWAY

★BOBBY-Q★
Great Steaks★Real BBQ!

KEEGAN'S

ZOOKZ

Matt's
BIG
BREAKFAST

Hava Java

Starbucks

Dusht 32

The Collins

CAMELBACK EAST VILLAGE

FIRST WATCH

The TAVERN

Jarbell's
RESTAURANT | WINE BAR | WINE STORE

Tomaso's

ups


BILTMORE
TALON CENTER

- Camelback Road Frontage
- Over 115 Restaurants Within a 2 Mile Radius
- Mountain View
- 13 Min to Phoenix Sky Harbor

CAMELBACK RD

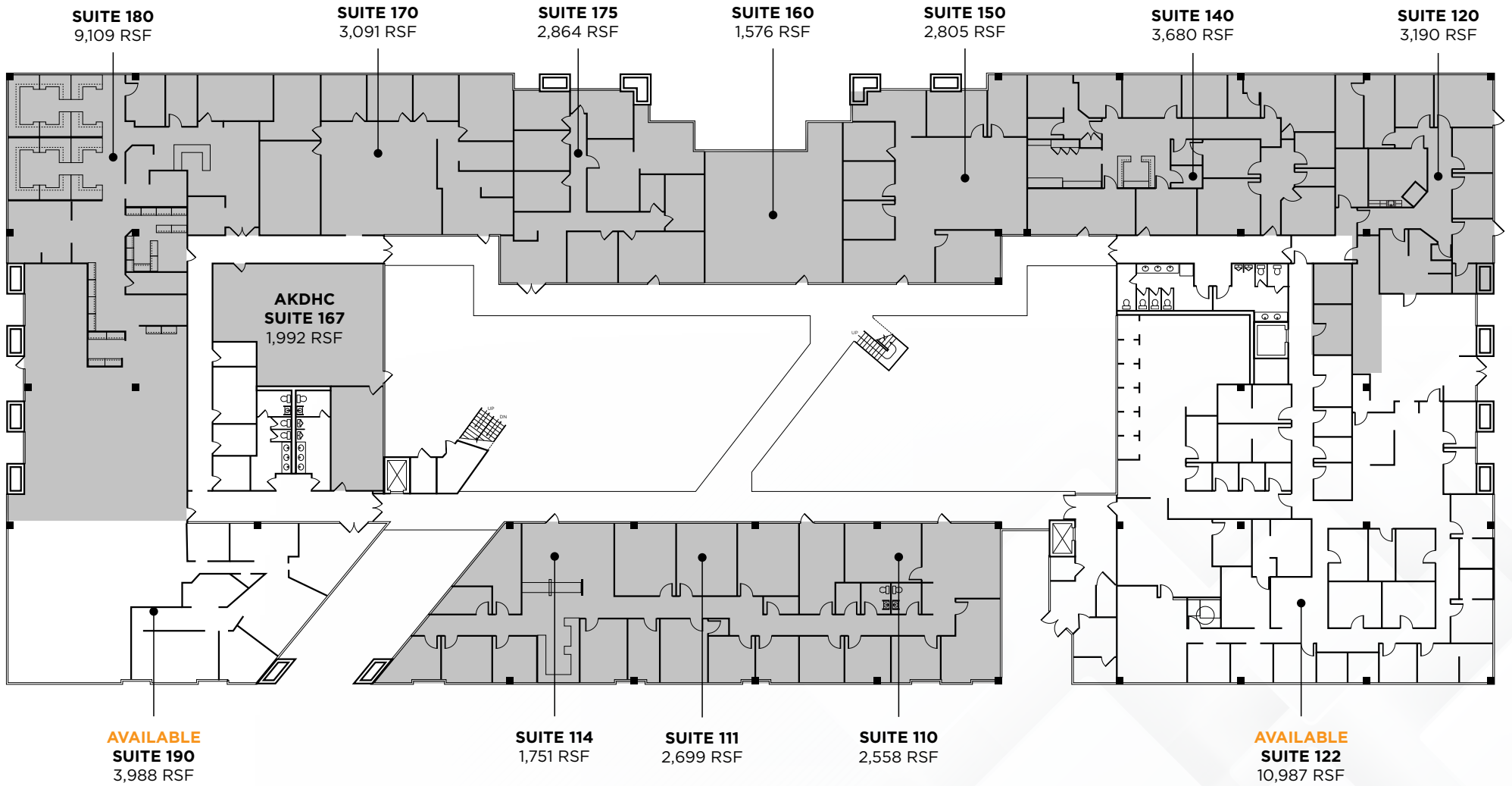


RESTAURANT COMING SOON



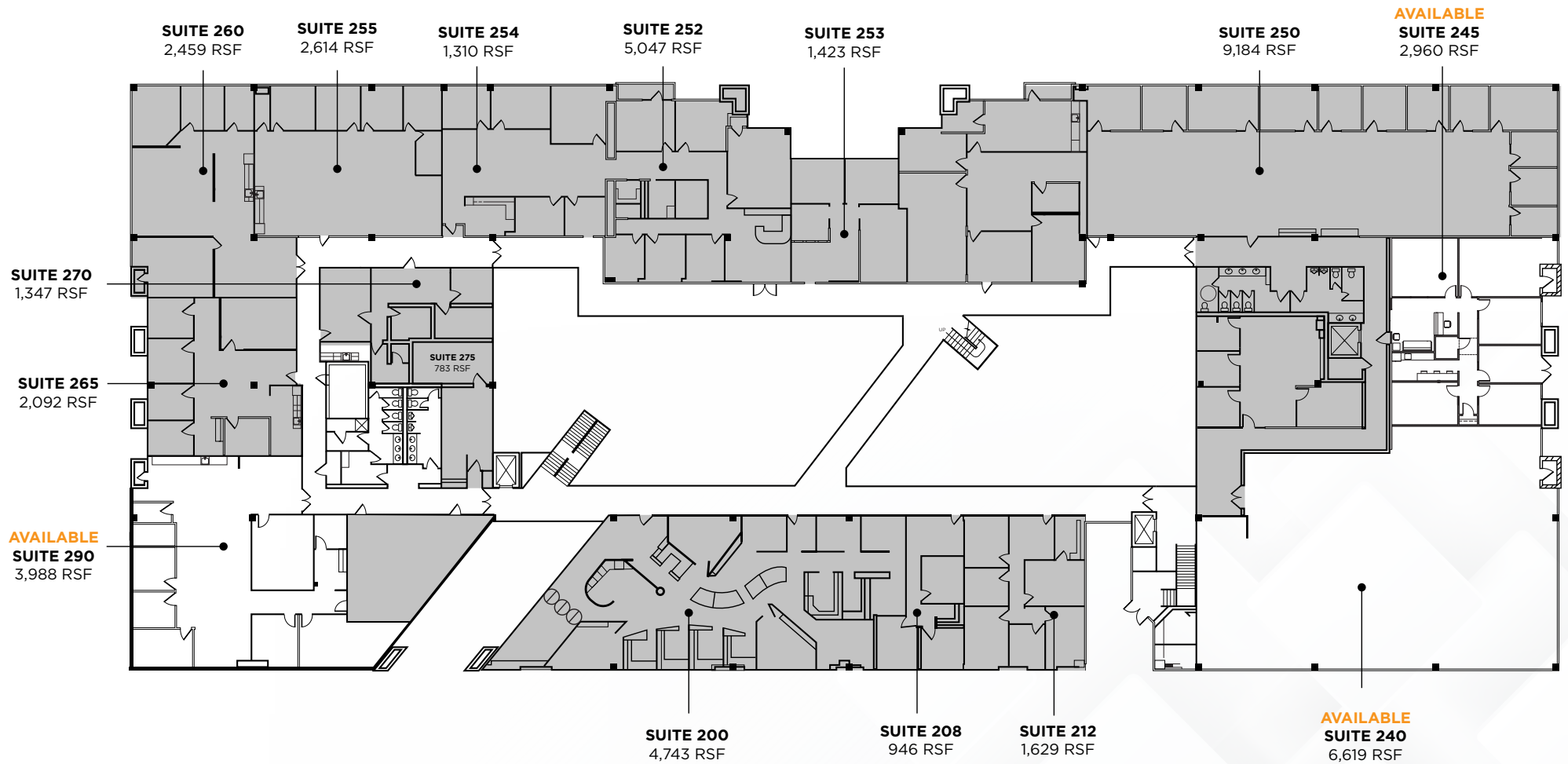


1ST FLOOR

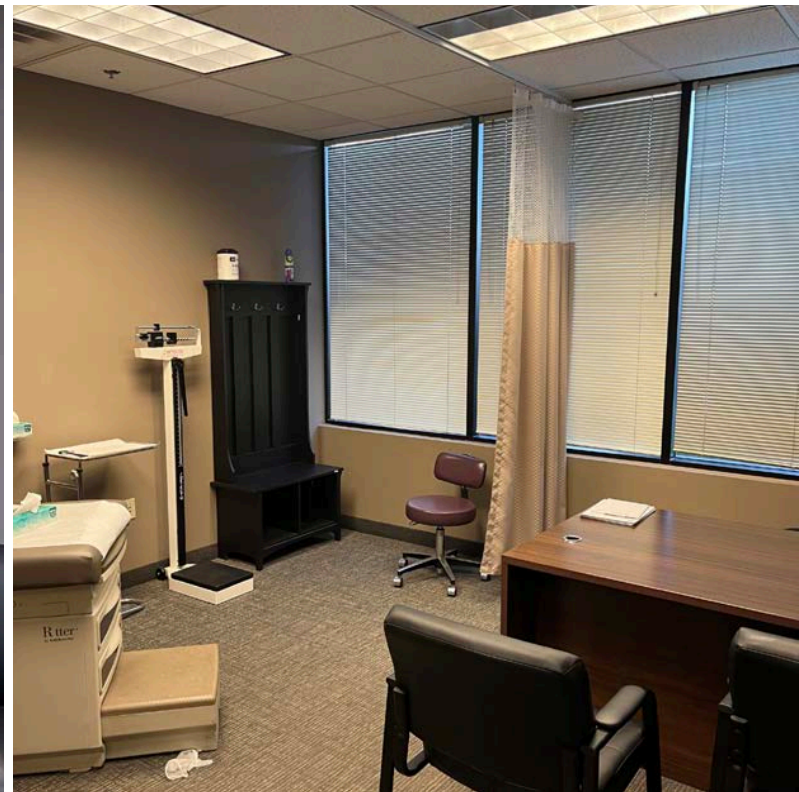




2ND FLOOR



 Suite 122





BILTMORE

TALON CENTER



For more information, please contact:

MICHAEL CRYSTAL

+1 602 229 5857

michael.crystal@cushwake.com

RYAN LAMBETH

+1 602 468 8570

ryan.lambeth@cushwake.com