



Harvey County Land

Burrton, Kansas

Property Highlights

- Zoned for industrial development
- Access to utilities through Harvey County
- US Highway 50 frontage
- 33.8 acres
- \$525,000
- Ideal for manufacturing, warehousing, and other industrial operations

Offering Summary

Sale Price:	\$525,000
Parcel	33.8
Size:	Acres

For More Information

Steven J. Martens, CCIM, SIOR

O: 316 847 4901

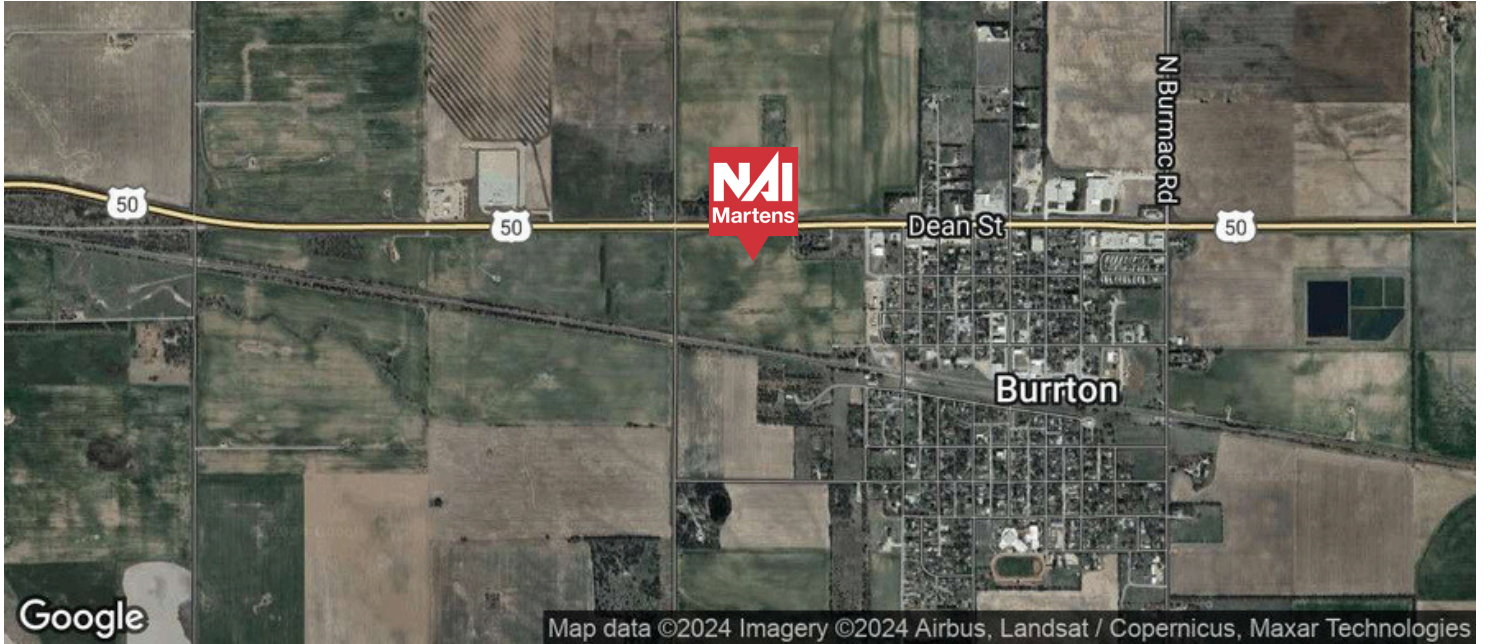
Smartens@naimartens.com

Industrial Land

US Highway 50

For Sale

Burrton, KS



For More Information

Steven J. Martens, CCIM, SIOR

O: 316 847 4901

Smartens@naimartens.com