



Athens

Assisted Living & Memory Care

Athens Assisted Living and Memory Care Community 2022 Price List

Assisted Living Price List

Studio (Shared Bath)	Approx. 301 sq. ft.	\$67 a day
Private Studio Deluxe	Approx. 315 sq. ft.	\$80 a day
Private 1 Bedroom Suite	Approx. 445 sq. ft.	\$107a day
Second person		\$34 a day

Level of Care

Levels of care are determined by an assessment completed by the Wellness Director and Executive Director with the resident/family member. This will determine the level of care rate.

Level of Care 1	\$8 per day
Level of Care 2	\$17 per day

Memory Care Price List

Private Studio	Approx. 200 sq. ft.	\$136 a day all inclusive
Companion Studio	Approx. 200 sq. ft.	\$117 a day all inclusive

Other Prices

Community Fee for Assisted Living	\$750
Community Fee for Memory Care	\$1000
Pet Fee	\$500

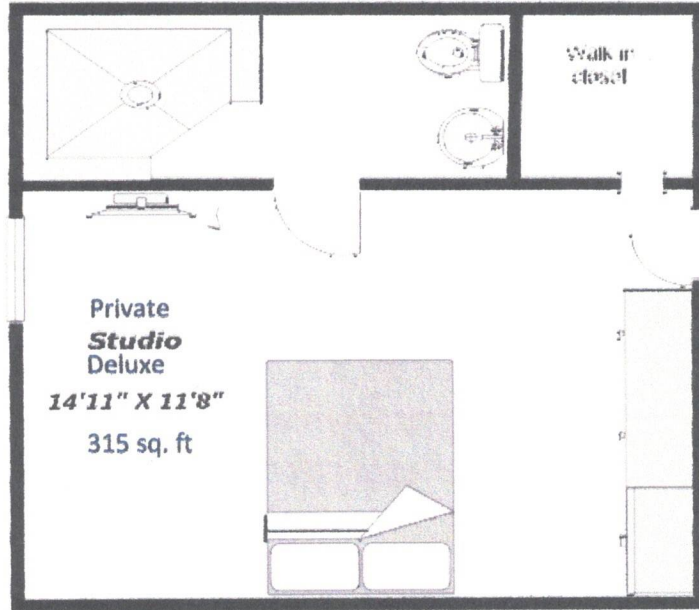
Monthly Rent includes:

Three Restraunt Style Meals Daily
All Utilities
24-Hour Trained Staff
Assistance with bathing, dressing grooming, medications, and other daily tasks
Emergency Call System
Scheduled Transportation
Weekly Housekeeping, Laundry, and Linen Service
Social and Recreation Programs

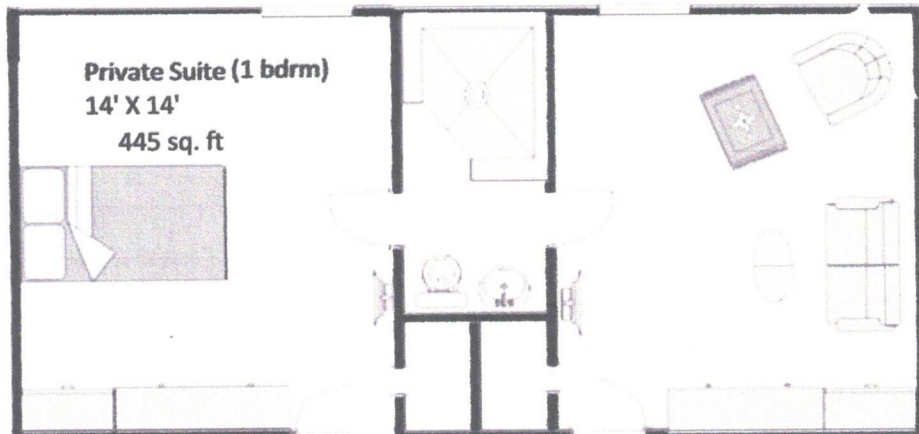
Optional/Concierge Services and Fees

Meal Delivery	\$5.00 per meal delivery
Guest Meals	\$5.00 each
Basic Cable	\$25.00 per month
Phone Service	\$25.00 per month
Transportation outside of 10 miles	\$20.00 per hour-1 hour minimum charge
Pet Fee	\$5.00 per day
(This includes: feeding and taking outside. Does not include clean up or litter box cleaning)	

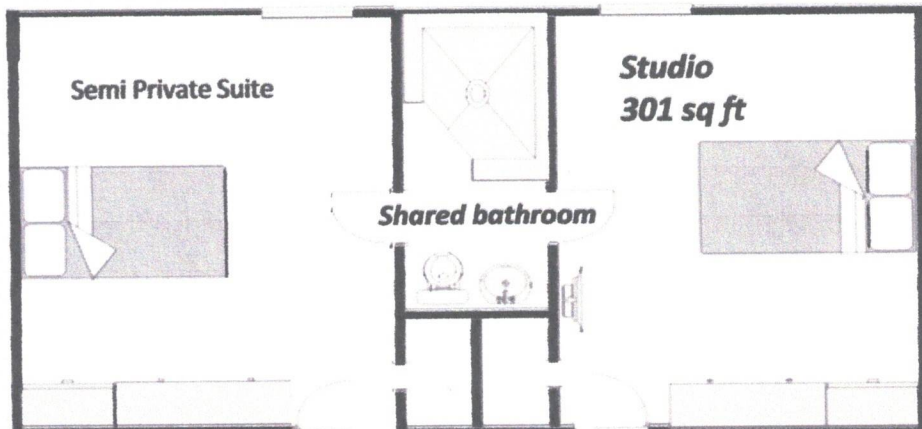
8579 State Highway 31 West
Athens TX, 75751



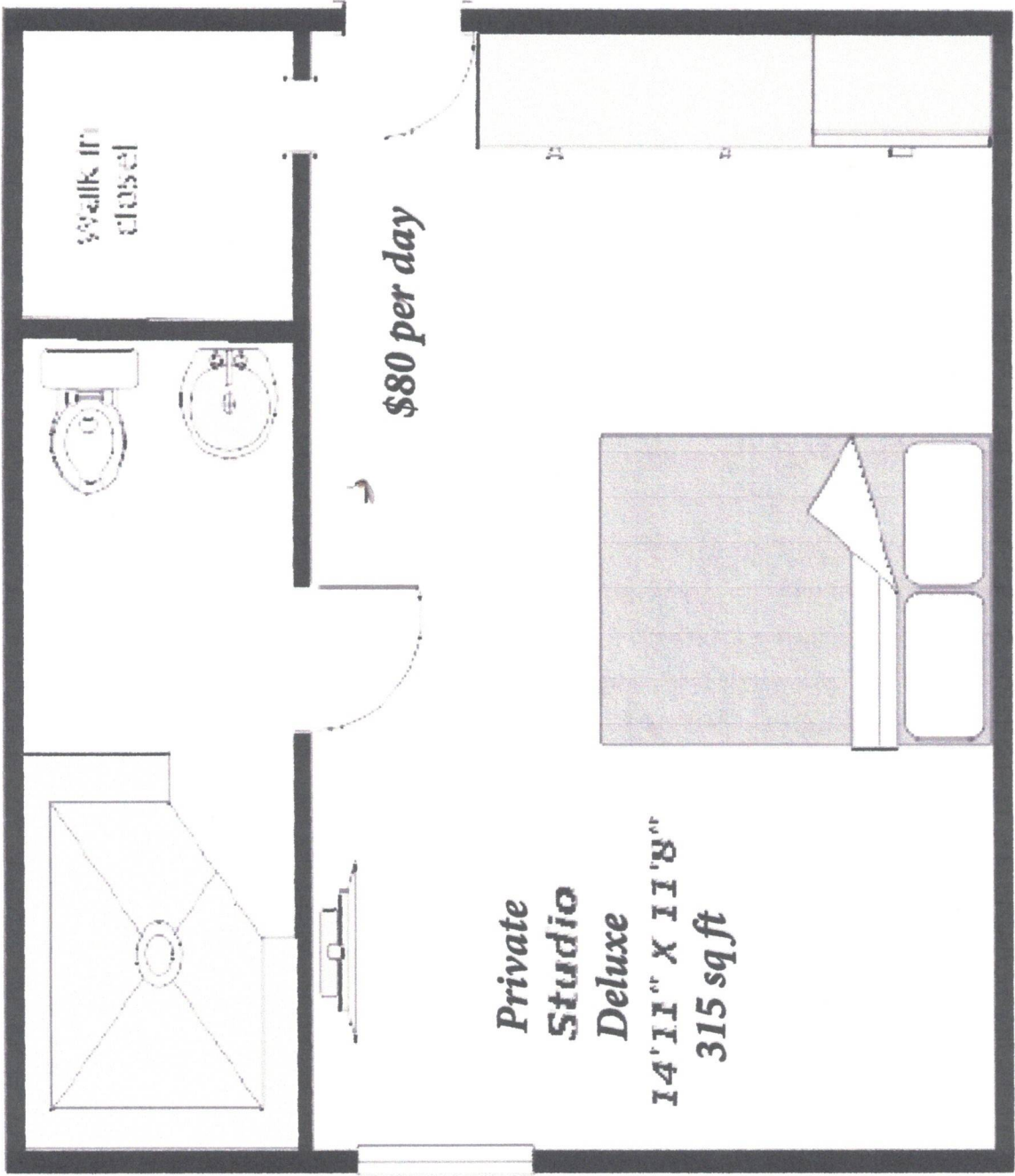
\$80 per day



\$107 per day



\$67 per day each



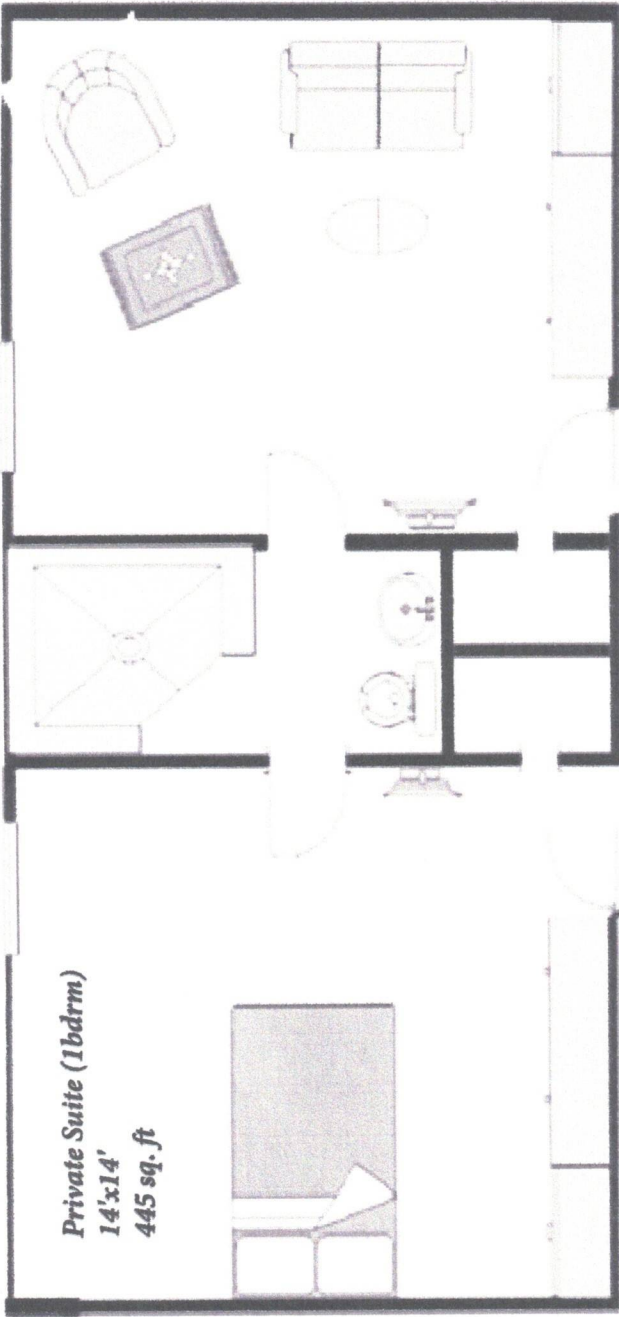
**Private
Studio
Deluxe**

**14'11" X 11'8"
315 sq ft**

\$80 per day

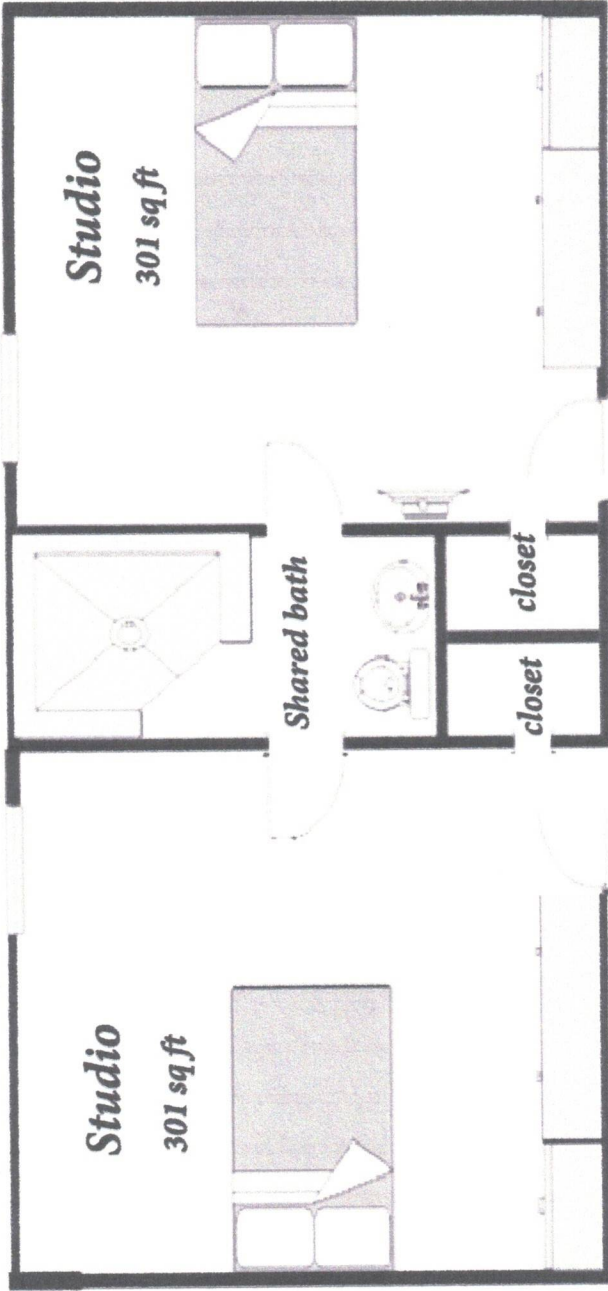
**walk in
closet**

207/208/409/606



Private Suite (1bdrm)
14'x14'
445 sq. ft

\$107 per day



Studio
301 sq ft

Shared bath

closet

closet

Studio
301 sq ft

\$67 per day

\$67 per day