



SUBLEASE OPPORTUNITY
2,967 RSF CREATIVE OFFICE

330 S. Cedros Avenue
Suites 201 & 202
Solana Beach, CA 92075

NEWMARK

330 S. Cedros Avenue Suites 201 & 202

Premium, creative office sublease within an award-winning mixed-use project in Solana Beach's renowned Cedros Avenue Design District. Amenity-rich, walkable location with on-site retail, dining, office, and residential components in a vibrant coastal setting.

Design-forward architecture inspired by surf culture and industrial heritage, complemented by curated murals, delivers a distinctive, high-visibility address.

Monthly Base Rate:

Negotiable

Sublease Term:

Through June 30, 2027

Available:

Immediately





Flexible, creative-professional office: open plan with private offices, conference room(s), and kitchen amenities.



Private balconies overlooking the Cedros Avenue promenade for an indoor-outdoor work experience.



Creative identity and strong visibility within the Cedros Avenue Design District.



Sustainability-forward features: photovoltaic panels, EV charging stations, and modern building efficiencies.



Prime coastal connectivity: two blocks to the beach, walkable to the Solana Beach Coaster, and minutes to I-5.



Amenity-rich walkability to dining, retail, and neighborhood services, including Rare Society next door.

330 S. Cedros Avenue

Suites 201 & 202

Highlights



Turnkey, Open,
Creative Office Space
with Private Balconies



200
AMPS



\$1.43/SF
NNNs



Vaulted Bow
Truss Ceiling

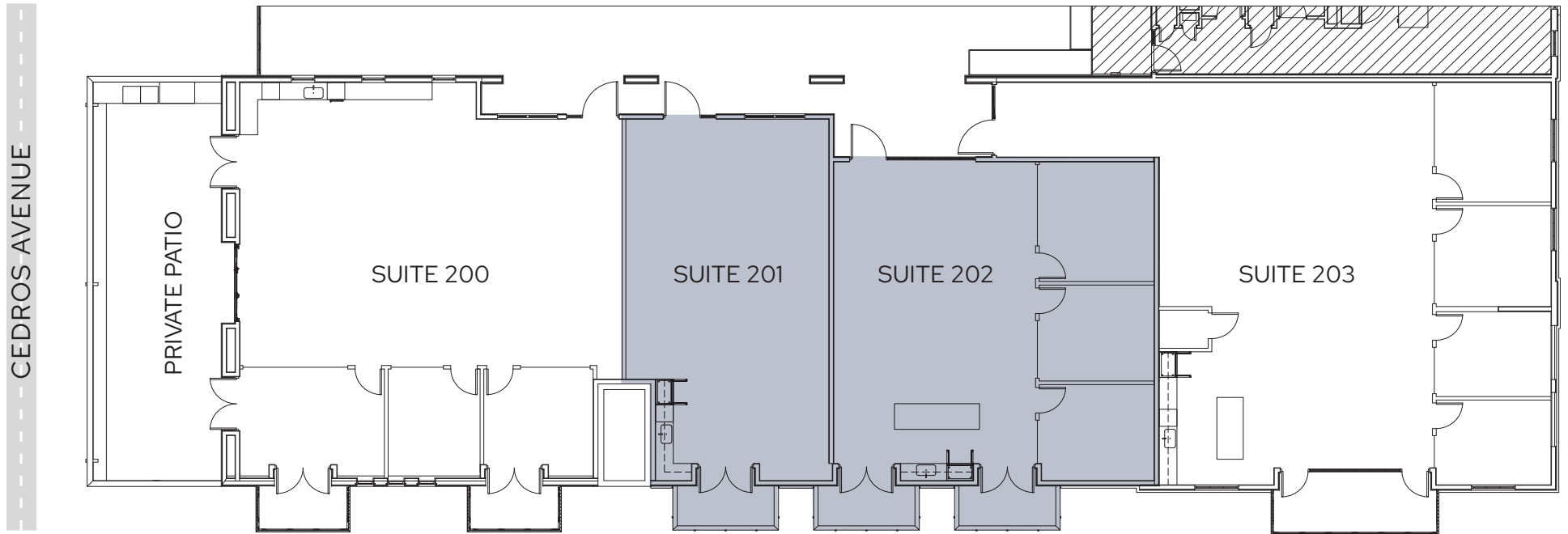


Short Walk from the
Amtrak Station



Food & Beverage
and Fitness on the
1st Floor (F45)

Floor Plan



SUITE	RSF	AVAILABLE	RATE FSG	NOTES
201	1,209	Immediately	Negotiable	Open Office, Kitchenette
202	1,758	Immediately	Negotiable	Open Office, 2 Private Offices, 1 Conference Room, Kitchenette
Total	2,967			



330 S. Cedros Ave.

Lomas Santa Fe Dr.

N. Cedros Ave.

S. Cedros Ave.

Highway 101





JOHN C. HUNDLEY
t 619-325-9110
e john.hundley@nmrk.com
CA RE Lic. #01365206

JON ENGLE
t 858-692-3503
e jon.engle@nmrk.com
CA RE Lic. #0904111



4655 Executive Dr, Suite 800
San Diego, CA 92121
t 858-875-3600
Corporate License #01355491



nmrk.com

NEWMARK

Corporate License #01355491

The information contained herein has been obtained from sources deemed reliable but has not been verified and no guarantee, warranty or representation, either express or implied, is made with respect to such information. Terms of sale or lease and availability are subject to change or withdrawal without notice.

