

Gensler

ARCHITECT
2025 K Street Northwest, Suite 200
Washington, DC 20005
202.771.5200

J&J&B
PROJECT MANAGER
2500 K Street NW, Suite 525
Washington, DC 20007
202.685.9722

WSP
MEP ENGINEER
1300 17th Street North, Suite 1000
Arlington, VA 22209
703.562.2000

SKKA, P.A.
STRUCTURAL ENGINEER
12500 Park Potomac Avenue, Suite 200
Potomac, MD 20854
301.881.1447

SBLD Studio
LIGHTING CONSULTANT
132 West 30th Street
New York, NY 10018
212.391.4237



Date	Description
03/30/18	ISSUE FOR PERMIT

Seal / Signature

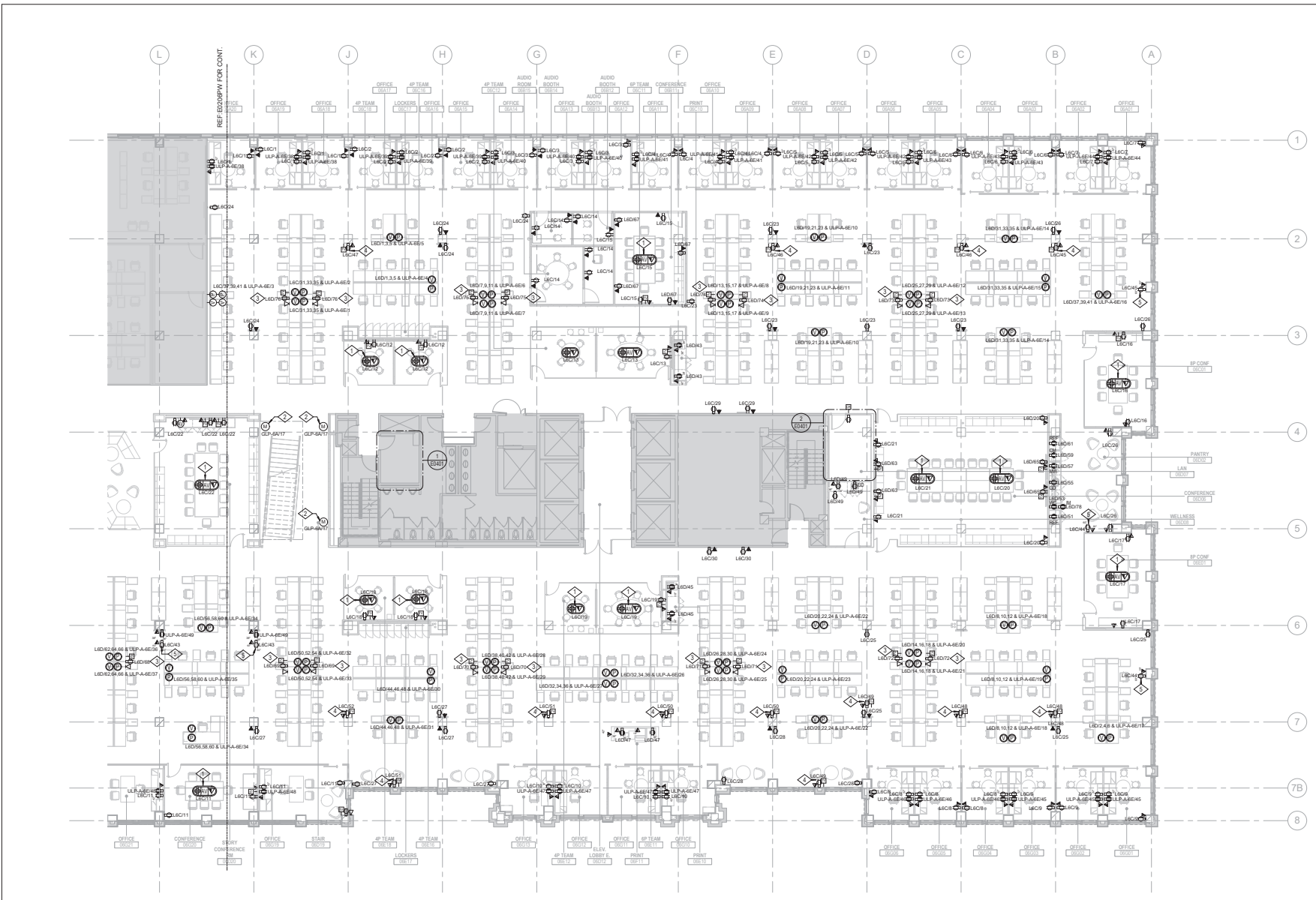
Project Name
The Washington Post

Project Number
057487.000

Scale
As Indicated

Description
ELECTRICAL - 6TH FLOOR EAST

E0206PE



SHEET NOTES

- COORDINATE LOCATION OF STUB-UP WITH FURNITURE AND TERMINATION DEVICE.
- JUNCTION BOX FOR AUTOMATIC FIRE CURTAIN POWER.
- CILING MOUNTED DEVICES, COORDINATE WITH CILING TOLLUM.
- POWER AND DATA DROP ABOVE CEILING PROVIDED FOR FUTURE COLUMN MOUNTED MONITOR.
- POWER AND DATA DROPPED FROM CEILING, TERMINATE AT BY WFT.

GENERAL NOTES

- DEVICE ELEVATION AND LOCATIONS SHOWN ARE FOR REFERENCE ONLY. REFER TO ARCHITECTURAL TYPICAL MOUNTING DIAGRAMS AND NOTES FOR ADDITIONAL INFORMATION.
- PROVIDE CONDUIT, WIRE, OVERCURRENT PROTECTION, ETC FOR A COMPLETE ELECTRICAL INSTALLATION AS DEFINED ON THE ELECTRICAL RISER DIAGRAM AND PLAN.
- COORDINATE BRANCH CIRCUIT AND FEEDER ROUTING IN THE FIELD WITH OTHER TRADES.
- FIRE STOP PENETRATIONS THROUGH FLOOR SLABS AND RATED WALLS, COORDINATE REQUIRED LOCATIONS WITH ARCHITECTURAL DRAWINGS AND NOTES.
- USE EMT CONDUIT IN OPEN CEILING AREAS OR WHERE THE CONDUIT WILL BE VISIBLE FROM THE FLOOR.
- PROVIDE GFI PROTECTION FOR ABOVE COUNTER RECEPTACLES WITH 6" OR 8" SINKS IN COMPLIANCE WITH NEC 210.8.
- PROVIDE LOW VOLTAGE INFRASTRUCTURE INCLUDING BUT NOT LIMITED TO EMPTY CONDUIT WITH PULLSTRINGS, JUNCTION BOXES, AND BACK BOXES. LOW VOLTAGE CABLING PROVIDED BY OTHERS, REFER TO THE TELECOM/ITAV DESIGNER'S DRAWINGS FOR ADDITIONAL INFORMATION.
- GANG DEVICES IN A COMMON WALLPLATE WHERE RECEPTABLES, DATA/AV DEVICES/SWITCHES ARE LOCATED NEXT TO EACH OTHER, REFER TO ARCHITECTURAL DRAWINGS FOR TYPICAL GROUPING.
- CIRCUIT PRIVATE OFFICE DEDICATED (COMPUTER) RECEPTACLE TO UPS POWER INDICATED ON PLAN, REFER TO ARCHITECTURAL DRAWINGS FOR WIRING DEVICE COLOR.
- REFER TO ARCHITECTURAL DRAWINGS FOR ALL RECEPTACLE COLORS.
- MC CABLE IS NOT PERMITTED TO BE USED IN ELECTRICAL OR MECHANICAL ROOMS.
- SHADED REGIONS INDICATE AREAS OUT OF SCOPE.
- CONTRACTOR TO INCLUDE SCOPE TO RELOCATE/RE-MOUNT ANY EXISTING WIRING OR CONDUIT IN OPEN CEILING AREAS.
- EXISTING DATA CONDUITS TO BE REMOUNTED TIGHT TO SLAB WHEREVER POSSIBLE TO AVOID CEILING CONFLICTS.
- ANY MORTARIZED SHAVES SHALL BE CIRCUITED TO THE NEAREST GENERAL CONVENIENCE RECEPTACLE BRANCH CIRCUIT. REFER TO ARCHITECTURAL DRAWINGS FOR LOCATION.
- REFER TO ARCHITECTURAL DRAWINGS FOR DETECTION WITH EXISTING RECEPTABLES AROUND THE CORE.
- PROVIDE A RELAY FOR EACH STARWELL DOOR TO INTERFACE WITH THE SECURITY SYSTEM TO RELEASE LOCKS UPON ALARM FROM THE FIRE ALARM SYSTEM. COORDINATE WITH SECURITY CONTRACTOR FOR FINAL CONFIGURATION.