

FOR SALE

830 SF
Commercial Space



5014 SERENA DRIVE, UNIT #1 Beamsville, ON

Michael Di Berardo, B Mus, CD, Sales Representative
905.741.0732 | michaeldiberardo@royallepage.ca | www.michaeldiberardo.com

Royal LePage® Macro Realty
2247 Rymal Road E #250, Stoney Creek, ON
Independently Owned & Operated

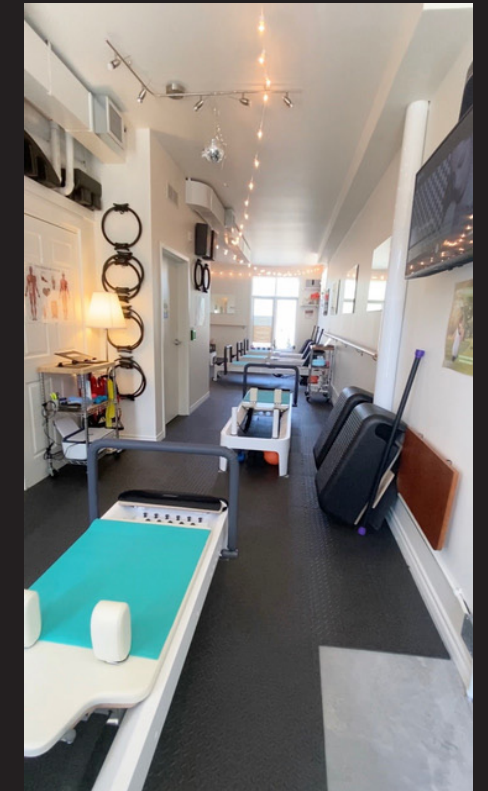
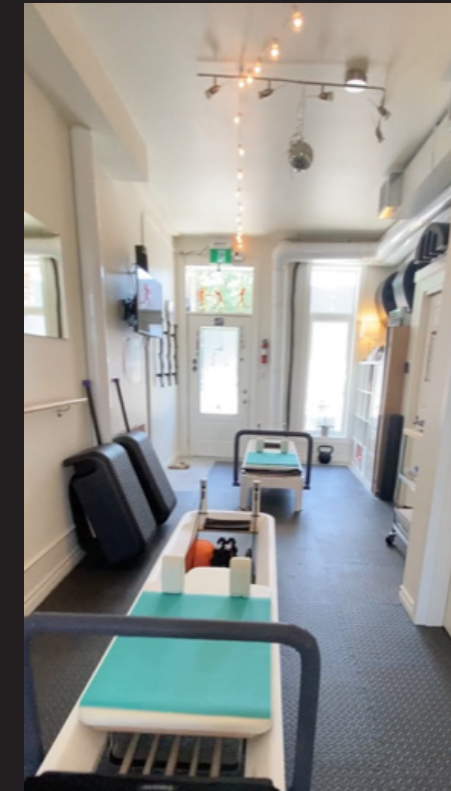
PROPERTY OVERVIEW

\$429,000.00

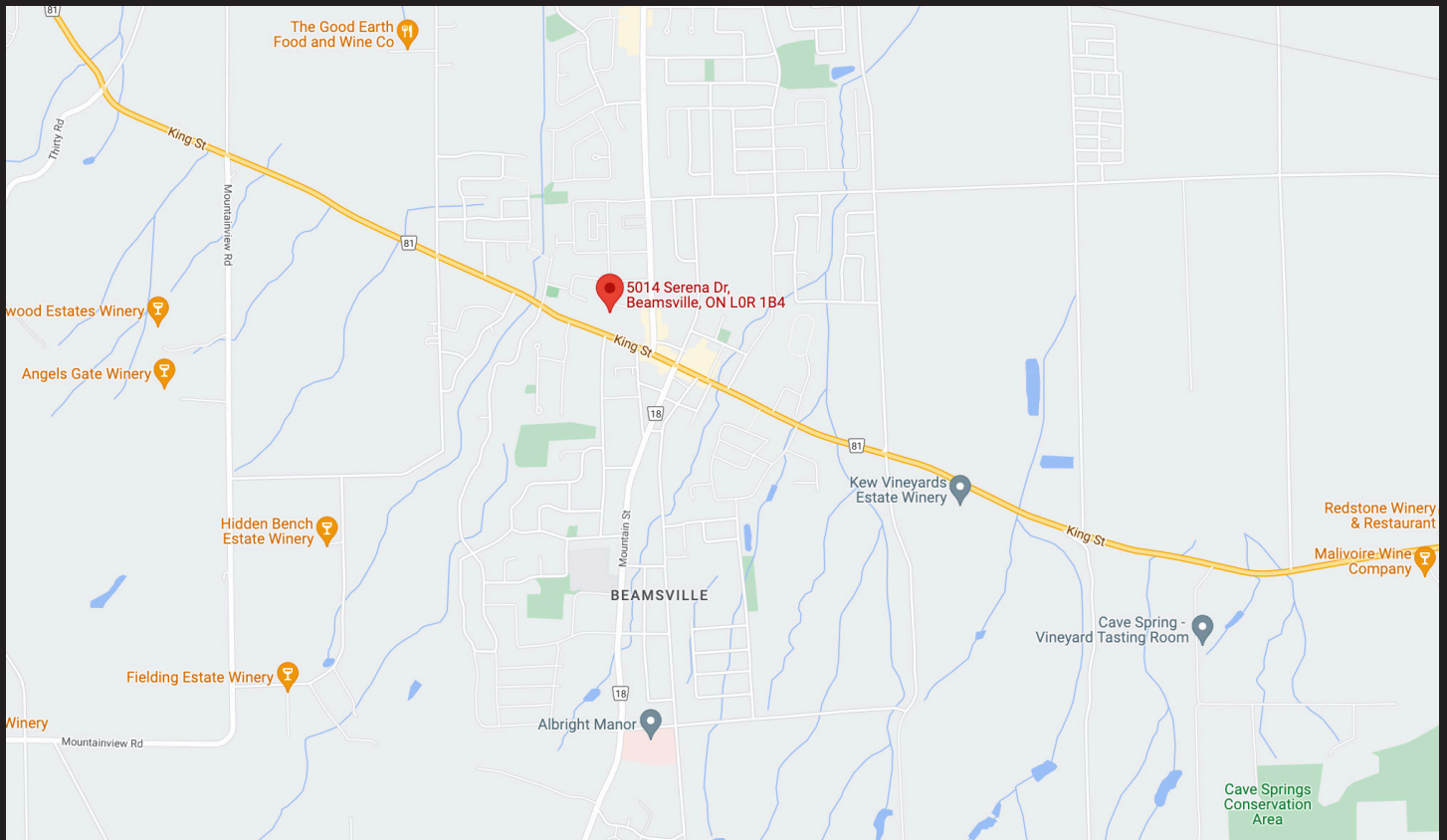
Property Features

- Clean, Bright Commercial Condo Unit
- Two Dedicated Parking Spots
- Constructed in 2020
- Heart of the Town of Lincoln
- Completely Finished, Move-In Ready
- General Commercial Zoning Ideal for Many Uses
- Accessible Washroom
- On Demand Tankless Hot Water Heater
- Flexible Closing

PROPERTY PHOTOS



LOCATION MAP



All offices are independently owned and operated, except those marked as indicated at rlp.ca/disclaimer. Not intended to solicit currently listed properties or buyers under contract. The above information is from sources believed reliable, however, no responsibility is assumed for the accuracy of this information. ©2022 Bridgemarq Real Estate Services Manager Limited. All rights reserved.