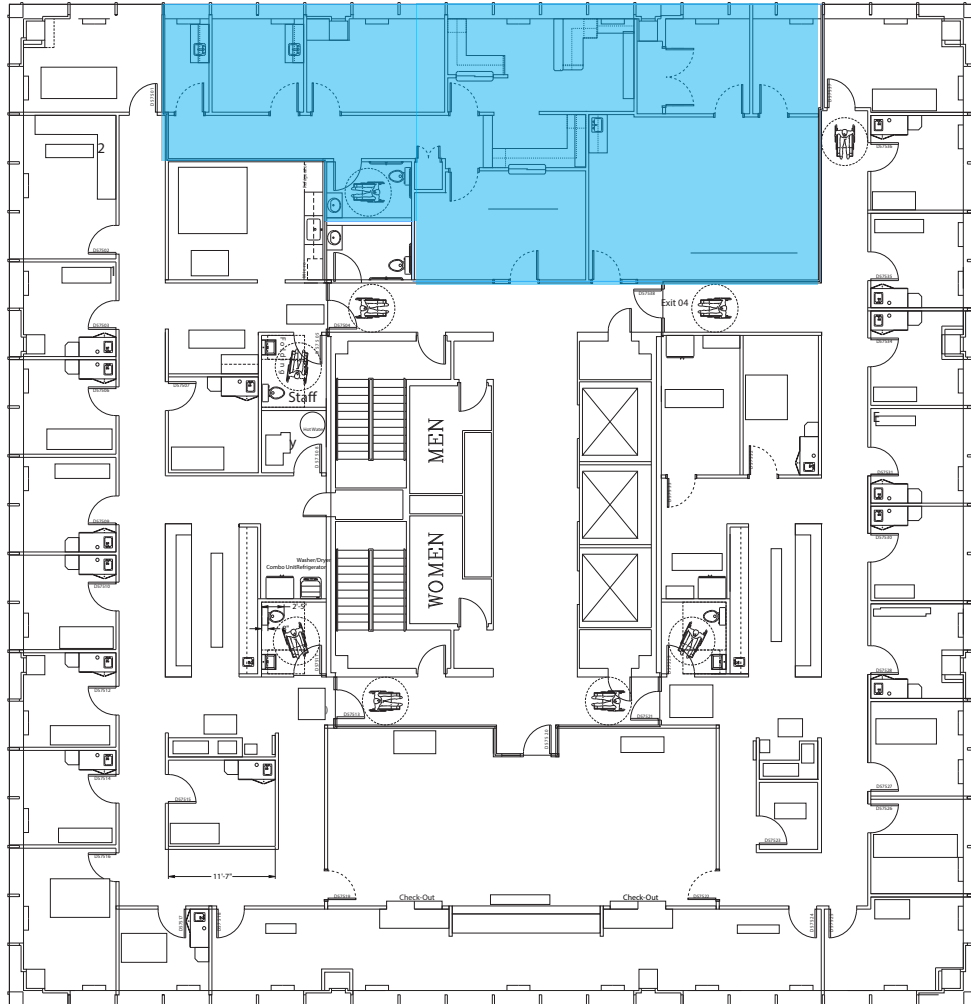


Floor Plan
5100 Brookline

5100 N Brookline Ave, Oklahoma City, OK 73112



Suite 550
2,031 RSF



Call Matt Ralls or Henry Johnston at **405.842.0100**

nbentley@wiggprop.com | wiggprop.com

This material is provided for information purposes only. It is from sources believed to be reliable. However, Wiggin Properties makes no warranties or representations, expressed or implied, as to the accuracy or sufficiency of the information. It is presented subject to errors, omissions, changes or withdrawal without notice. Square footage is provided by the local County Assessor or the Owner. Photos and graphics with copyrights by Costar, Google, Wiggin Properties and independent contractors are used with permission.