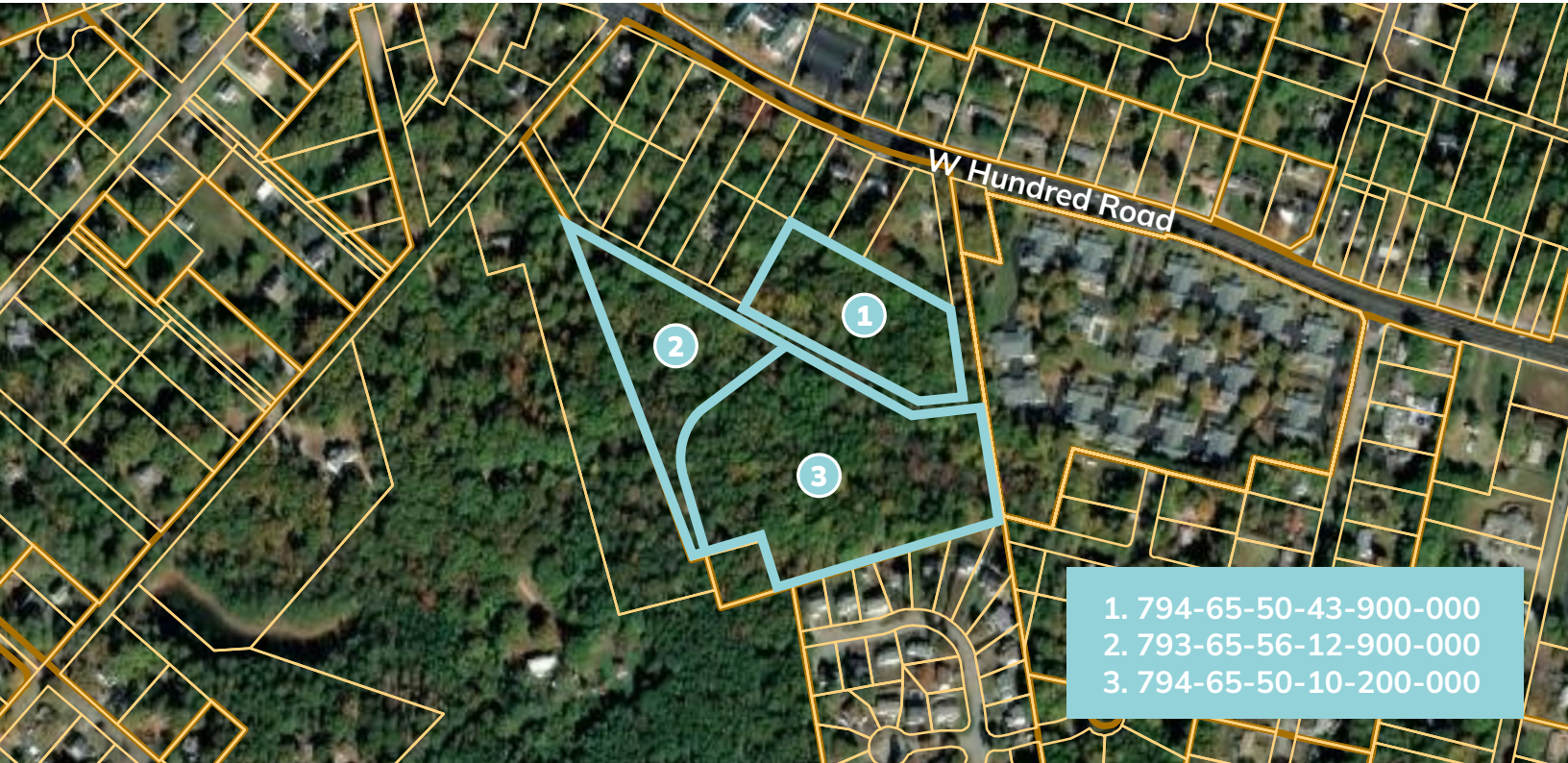




LAND FOR SALE

Residential Development Opportunity



Contact Us

HAMILTON SHAHEEN

VICE PRESIDENT
804.796.0519
hshaheen@rangecommercial.com

DAVID WILKINS, SIOR

EXECUTIVE MANAGING DIRECTOR
804.873.2569
dwilkins@rangecommercial.com

rangecommercial.com
804.796.0500
7200 Glen Forest Drive, Suite 100
Richmond, VA 23226

PROPERTY HIGHLIGHTS

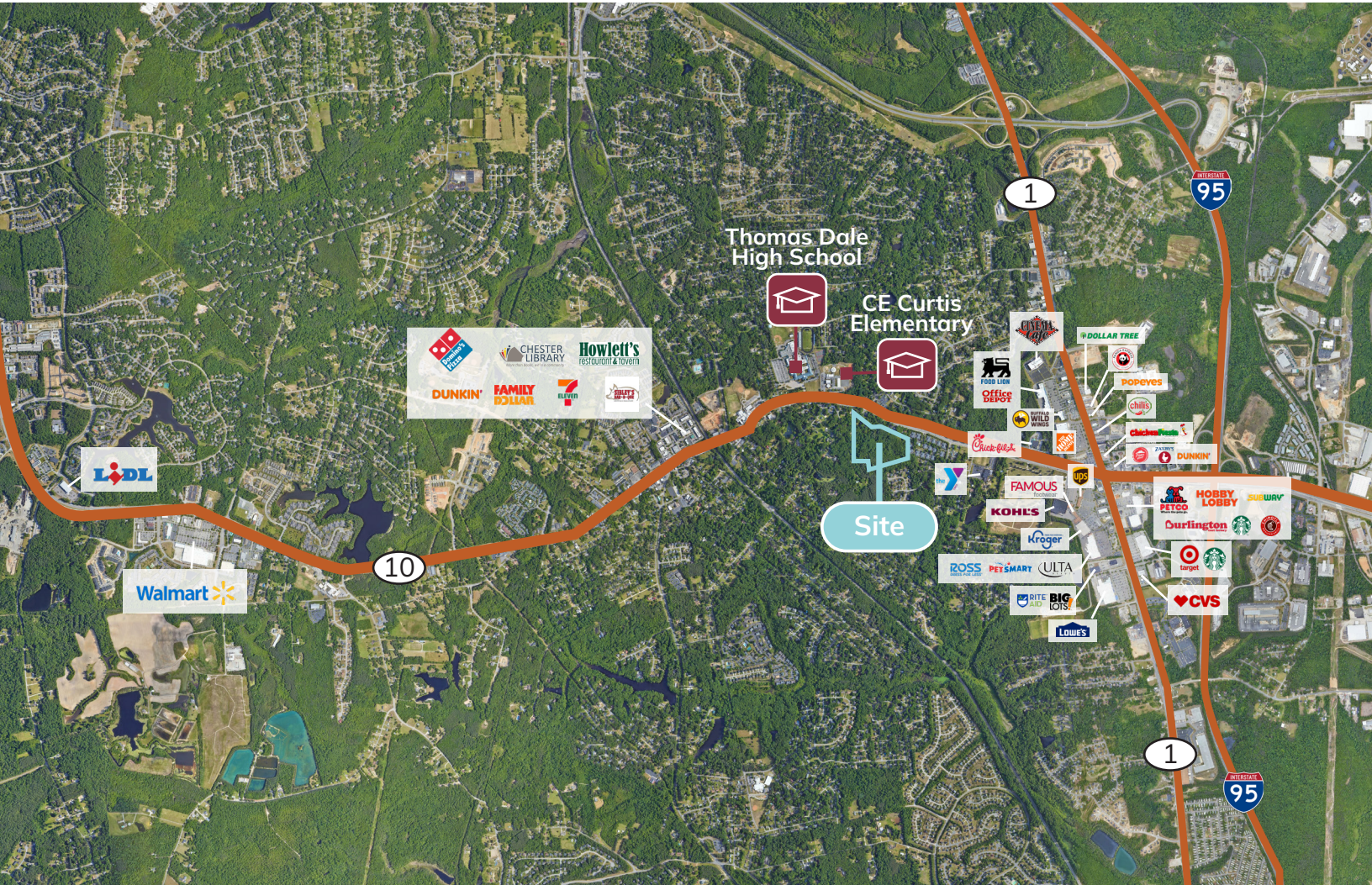
13.2 Acres of Residential Land in Chester, VA

- > Located just off of W Hundred Road with easy access to Route 1
- > Addresses:
3400 Curtis Circle, Chester, VA 23832
3401 Curtis Circle, Chester, VA 23831
3301 Curtis Circle, Chester, VA 23831
- > Zoned R-7
- > Rapidly growing Chesterfield Submarket

Copyright ©2026 Range Commercial Partners. Information herein has been obtained from sources deemed reliable, however its accuracy cannot be guaranteed. The user is required to conduct their own due diligence and verification.

CURTIS CIRCLE, CHESTER, VA | LAND FOR SALE

13.2 Acres in a Great Location



SCHOOLS

Thomas Dale High School - 0.6 miles, 4 min drive
 Elizabeth Davis Middle School - 5 miles, 12 min drive
 CE Curtis Elementary - 0.5 miles, 3 min drive

DEMOGRAPHICS

	1 mile	3 miles	5 miles
Population	6,212	39,290	83,251
Households	2,535	14,957	31,222
Median Home Value	\$271,278	\$275,334	\$275,117
Average Household Income	\$84,108	\$89,876	\$92,205

Contact Us

HAMILTON SHAHEEN

VICE PRESIDENT
 804.796.0519
 hshaheen@rangecommercial.com

DAVID WILKINS, SIOR

EXECUTIVE MANAGING DIRECTOR
 804.873.2569
 dwilkins@rangecommercial.com

