



Industrial Space For Lease

35A Minthorn Blvd, Markham, ON

Get more information

Eva Destunis*

Principal, Executive Vice President
+1 905 968 8006
eva.destunis@avisonyoung.com

Dylan Corson*

Associate
+1 905 474 1155
dylan.corson@avisonyoung.com

Ryan Hood*, SIOR

Principal, Executive Vice President
+1 905 968 8007
ryan.hood@avisonyoung.com



Platinum member

*Sales Representative

Industrial For Lease

35A Minthorn Blvd, Markham, ON



Industrial For Lease

35A Minthorn Blvd, Markham, ON



Building Details

Total Area:	54,385 sf
Office Area:	18%
Clear Height:	24'
Shipping	6 Truck Level Doors 1 Drive-In Door
Net Asking Rate:	\$16.75 psf (Year 1)
T.M.I. (2026):	\$5.20 psf
Zoning:	EMP-BP (O) (EMPLOYMENT - BUSINESS PARK (OFFICE PRIORITY))
Availability:	July 1, 2026

Highlights



Great clear height



LED warehouse lighting



Excellent location



Exterior gated security



EV charging stations



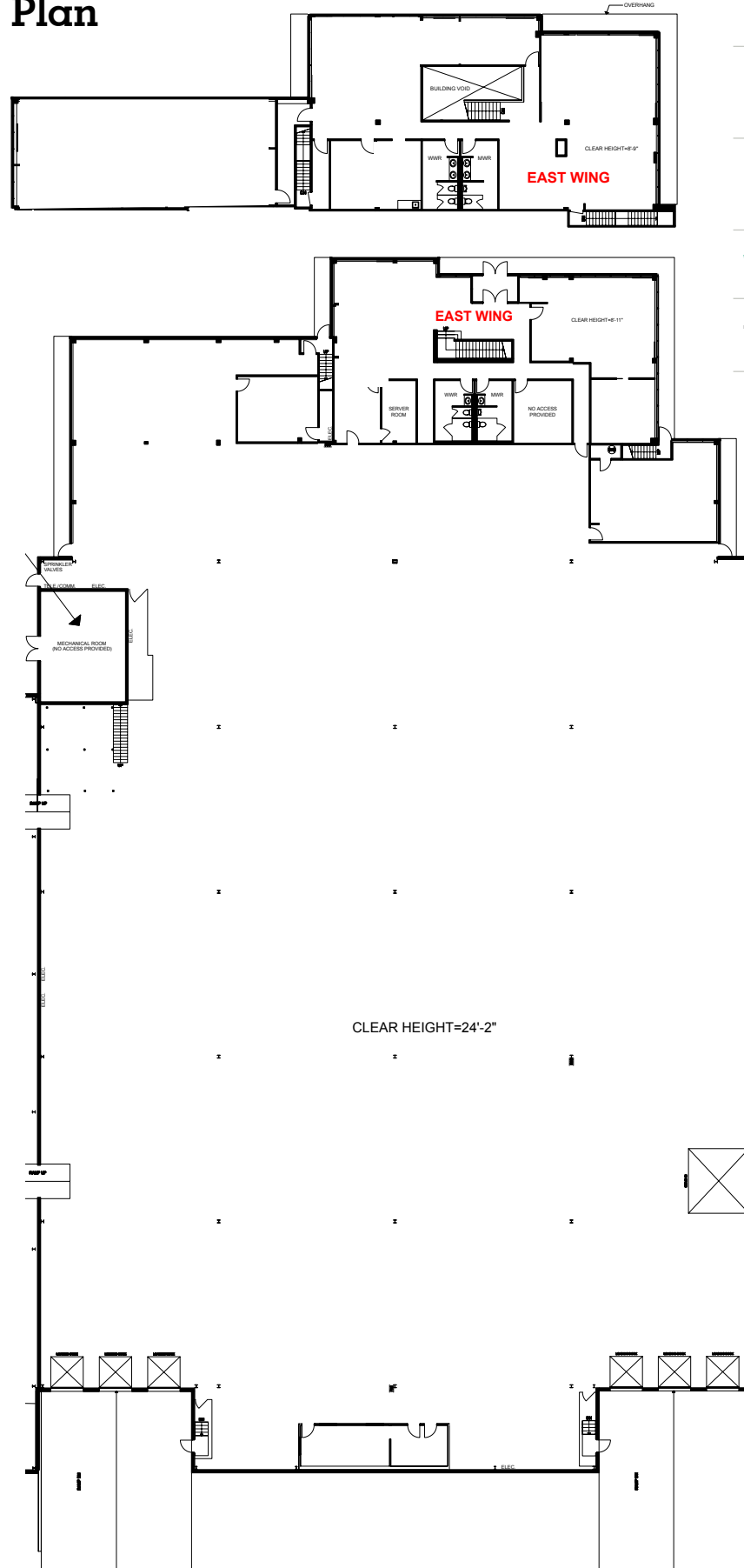
One minute drive to
Highways 7 & 404



Industrial For Lease

35A Minthorn Blvd, Markham, ON

Floor Plan



Ground Floor Office:	4,800 SF
Second Floor Office:	5,140 SF
Warehouse:	44,445 SF
Total Area:	54,385 SF

Industrial For Lease

35A Minthorn Blvd, Markham, ON



Industrial For Lease

35A Minthorn Blvd, Markham, ON

Industrial For Lease

35A Minthorn Blvd, Markham, ON

Aerial Photos

West



East



West



Southwest



Northeast



Southeast



Location



Get more information

Eva Destunis*
Principal, Senior Vice President
+1 905 968 8006
eva.destunis@avisonyoung.com

Dylan Corson*
Associate
+1 905 474 1155
dylan.corson@avisonyoung.com

Ryan Hood*, SIOR
Principal, Senior Vice President
+1 905 968 8007
ryan.hood@avisonyoung.com



*Sales Representative