



FOR SUBLEASE

**4520
ELECTRONICS PLACE
LOS ANGELES, CA**

21,291 SF AVAILABLE

**WELL LOCATED WITH IMMEDIATE (5) FREEWAY ACCESS
HIGH-END OFFICE SPACE
100% HVAC**

REMAINING TERM: 04/30/2027
ASKING RATE: TBD - PLEASE CALL BROKER FOR
MORE INFORMATION

 **CONTACT US:**

PAUL SIMS
Director
+1 213 955 5153
paul.sims@cushwake.com

ERIK LARSON
Executive Managing Director
+1 213 955 5126
erik.larson@cushwake.com



4520
ELECTRONICS PLACE



BUILDING DETAILS AND HIGHLIGHTS

SIZE: ±21,291 SF

OFFICE: APPROX. 4,500 SF

CLEAR HEIGHT: MIN. 15' CLEAR

LOADING: 2 DH/1 GL LOADING POSITION
PIT LEVELERS

POWER: APPROX. 2,400 AMPS, 480/277V, 3 PHASE

PARKING: ±30 STALLS

ZONING: M3

REMAINING SUBLEASE TERM: 04/30/2027



PROPERTY LOCATION



**4520
ELECTRONICS
PLACE**

ELECTRONICS PL

COLORADO BLVD

COLORADO ST FWY EXT

W BROADWAY

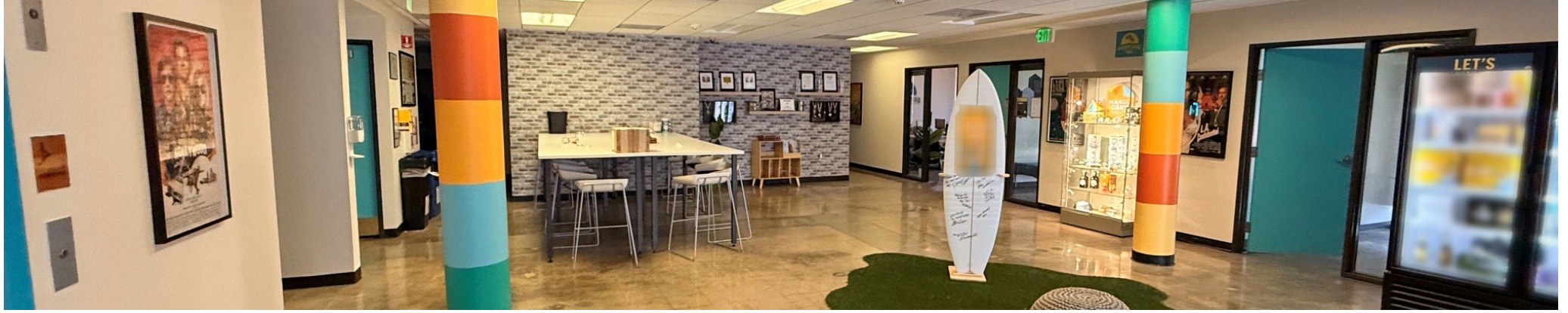
W SAN FERNANDO RD

SAN FERNANDO RD

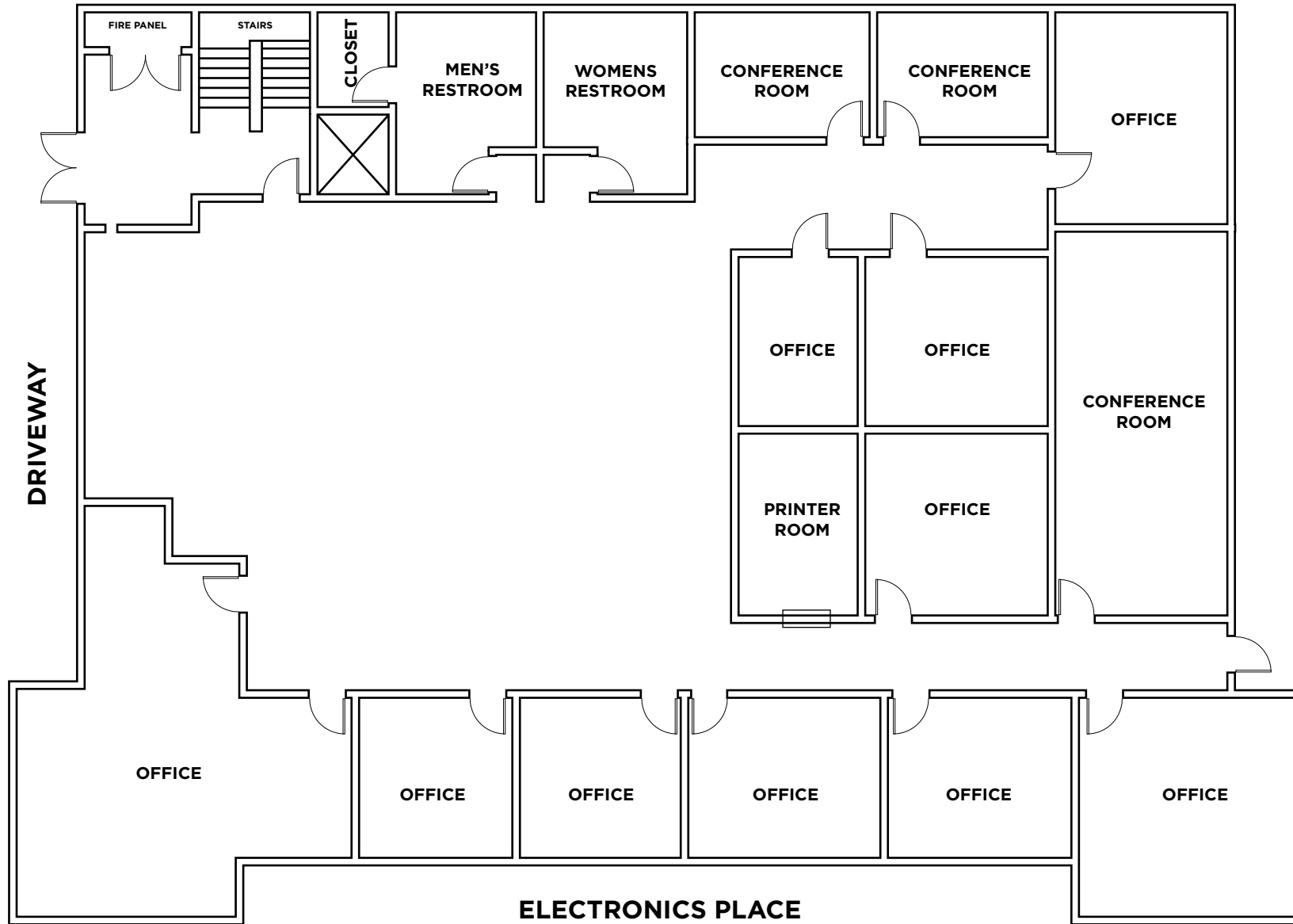
W COLORADO ST

W ELK AVE

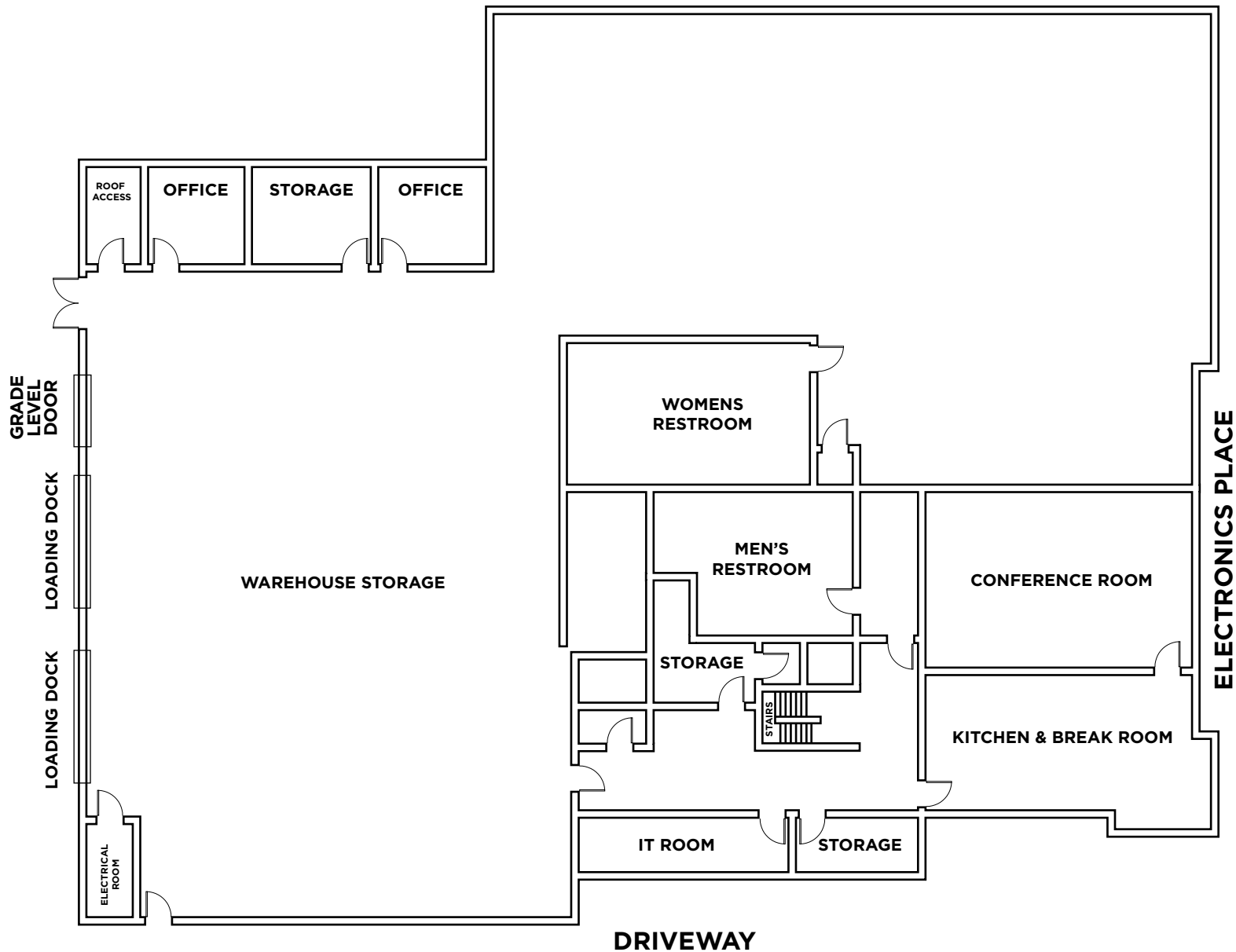
PROPERTY PHOTOS



FLOOR PLAN | 1ST FLOOR



FLOOR PLAN | 2ND FLOOR





CONTACT INFORMATION:

PAUL SIMS

Director

+1 213 955 5153

paul.sims@cushwake.com

ERIK LARSON

Executive Managing Director

+1 213 955 5126

erik.larson@cushwake.com

©2026 Cushman & Wakefield. All rights reserved. The information contained in this communication is strictly confidential. This information has been obtained from sources believed to be reliable but has not been verified. NO WARRANTY OR REPRESENTATION, EXPRESS OR IMPLIED, IS MADE AS TO THE CONDITION OF THE PROPERTY (OR PROPERTIES) REFERENCED HEREIN OR AS TO THE ACCURACY OR COMPLETENESS OF THE INFORMATION CONTAINED HEREIN, AND SAME IS SUBMITTED SUBJECT TO ERRORS, OMISSIONS, CHANGE OF PRICE, RENTAL OR OTHER CONDITIONS, WITHDRAWAL WITHOUT NOTICE, AND TO ANY SPECIAL LISTING CONDITIONS IMPOSED BY THE PROPERTY OWNER(S). ANY PROJECTIONS, OPINIONS OR ESTIMATES ARE SUBJECT TO UNCERTAINTY AND DO NOT SIGNIFY CURRENT OR FUTURE PROPERTY PERFORMANCE. PD-209657-V3