

Office Space | For Lease

43 West Hastings Street

Save on Meats Building
Vancouver, BC

2 Full-Floors of Office Space Available Immediately



Brayden Sangha

Personal Real Estate Corporation
CBRE Limited | Office Leasing & Sales
brayden.sangha@cbre.com
604 329 8882

Proudly owned and operated by

CBRE

Anthem 

The Opportunity

Built in 1901, the Save On Meats building located at 43 West Hastings Street is an iconic landmark in Vancouver's Downtown East Side. The building underwent considerable renovations to consolidate the Save on Meats onto the ground floor retail level and restore the building to its brick and beam frame, creating space for three new office tenants.

Property Details



PREMISES

2nd Floor: 5,262 SF **LEASED**
3rd Floor: 5,328 SF
4th Floor: 5,333 SF



LOWEST GROSS RENT PER SQUARE FOOT

In Downtown Vancouver



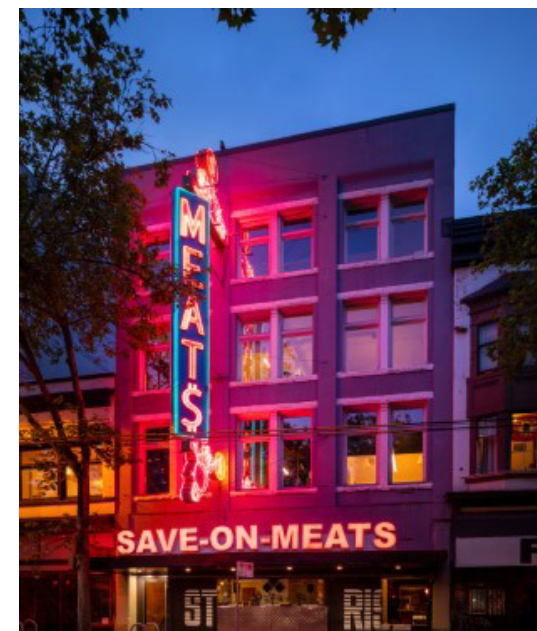
SPACE FEATURES

Stunning exposed brick, refinished hardwood flooring and large windows providing abundant natural light

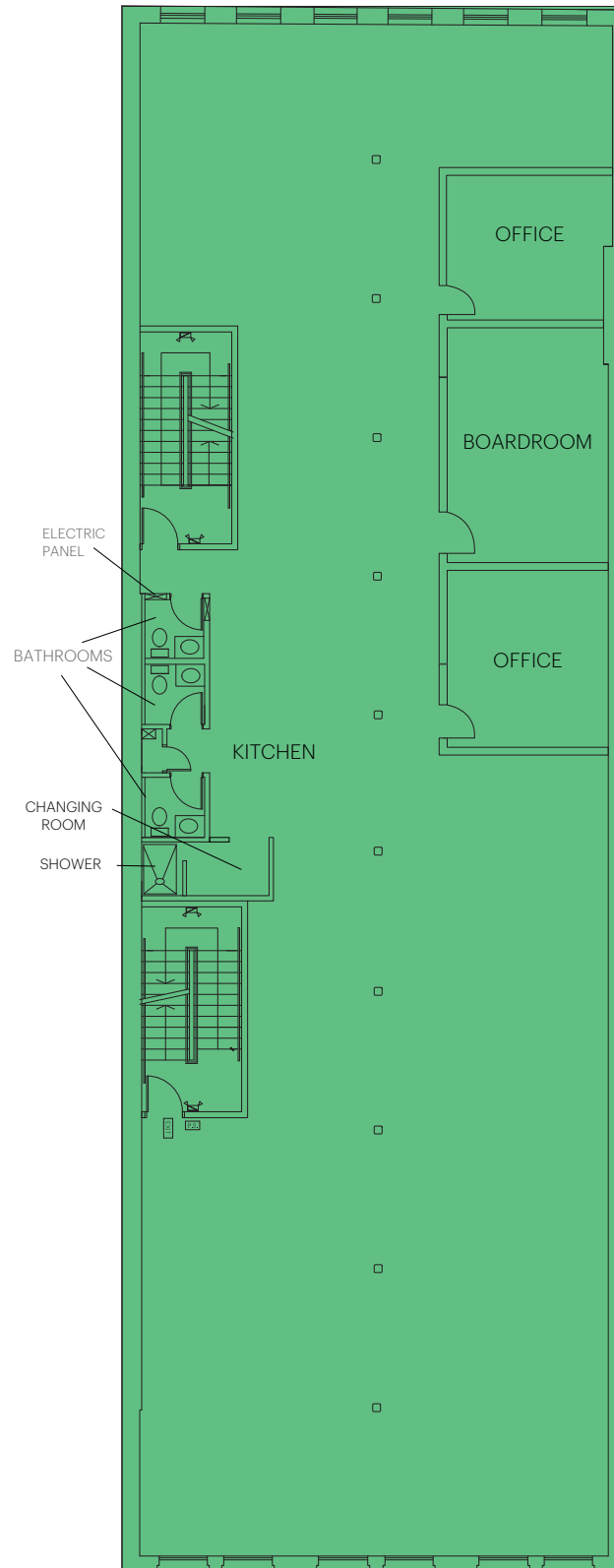


TERM LENGTH

Flexible



Third Floor



Floorplan not to scale

Unit Details

AREA

5,328 sq. ft. total

BASE RENT

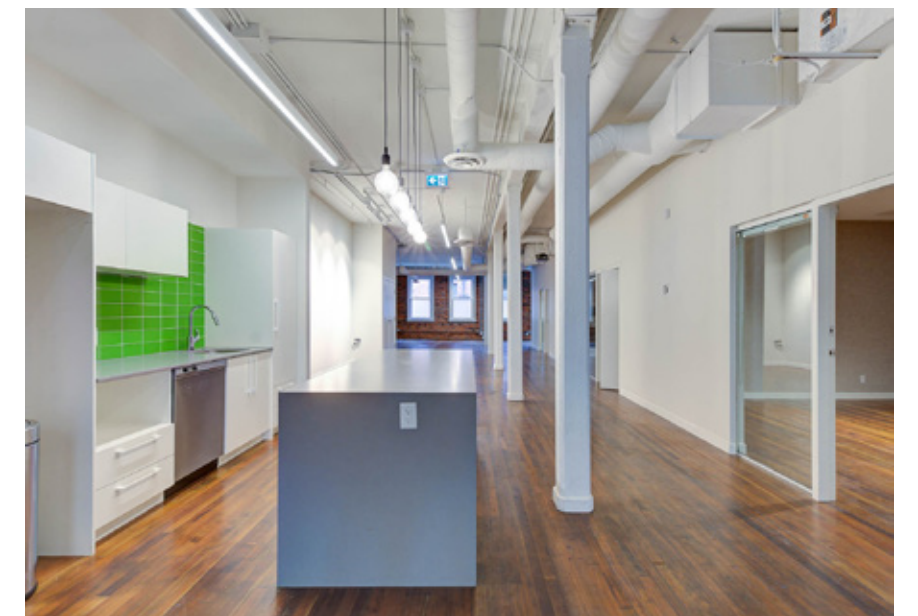
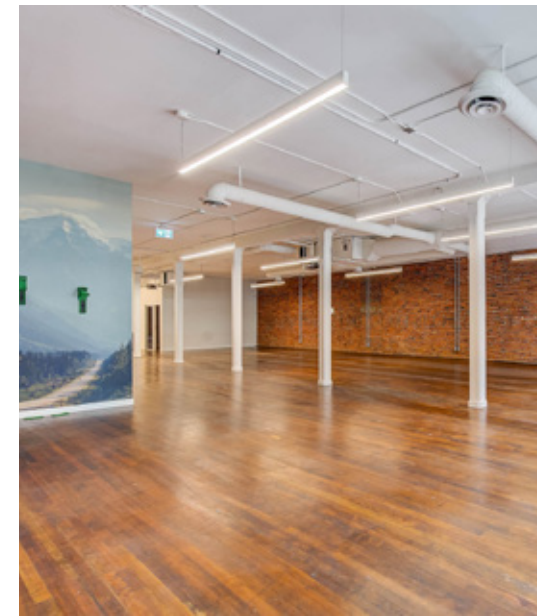
Contact Listing Agent

ADDITIONAL RENT

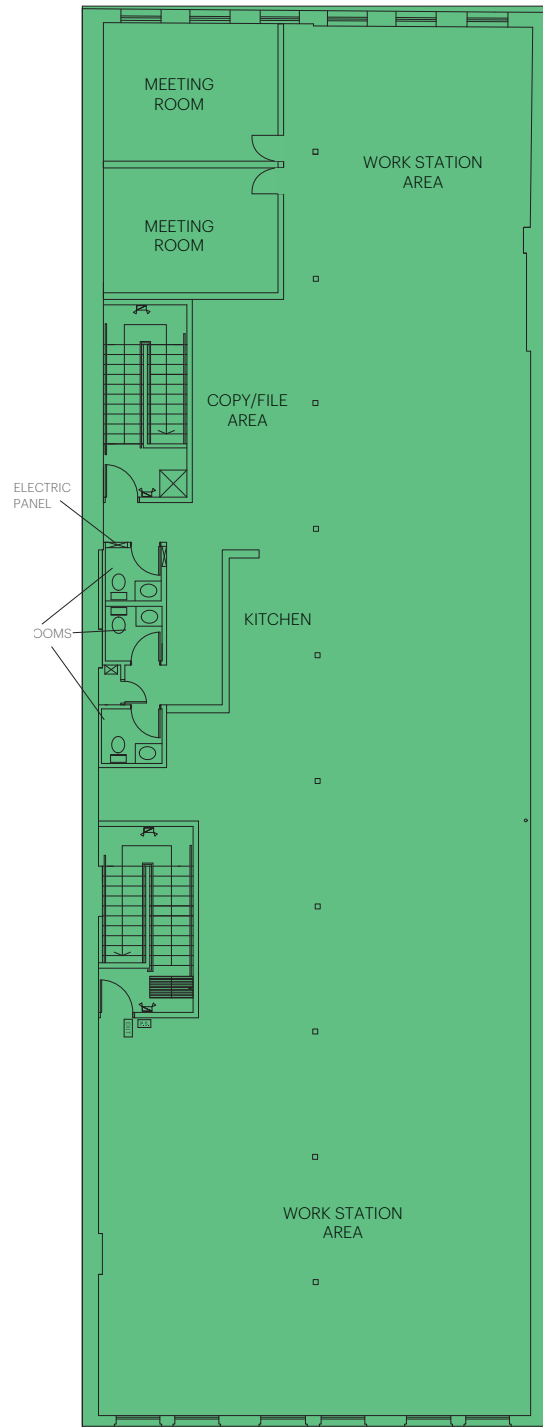
\$10.08 per square foot (2025 est.)

AVAILABLE

Immediately



Fourth Floor



Floorplan not to scale

Unit Details

AREA

5,333 sq. ft. total

BASE RENT

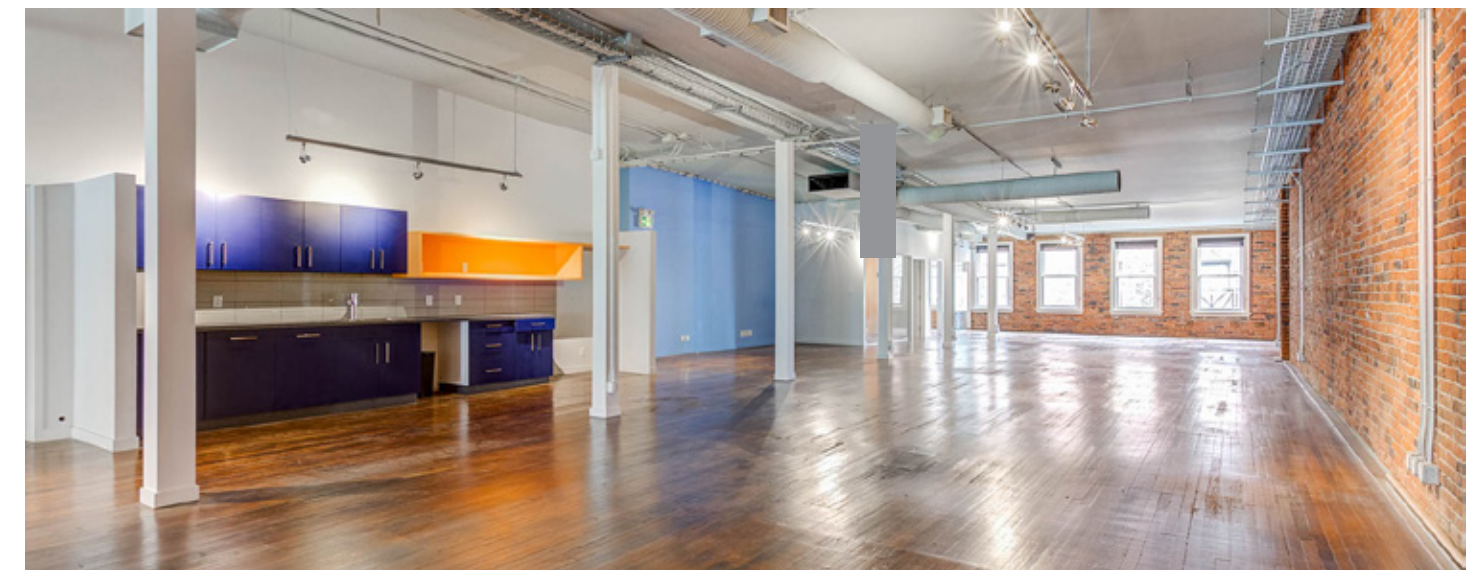
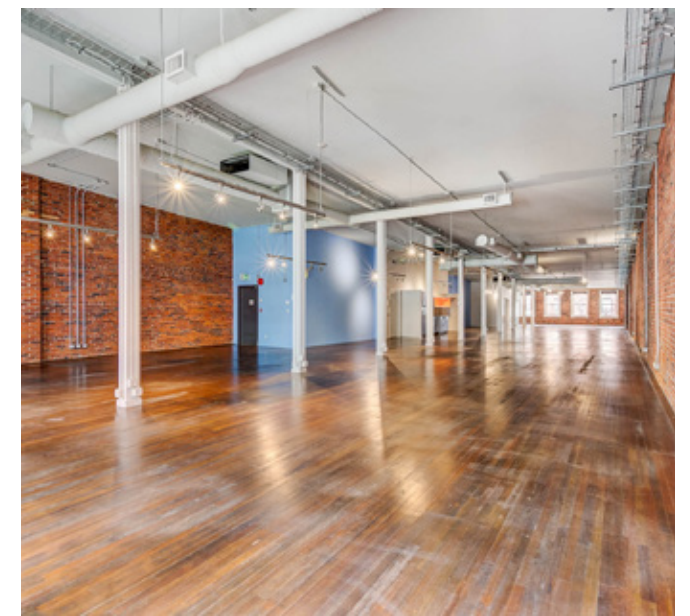
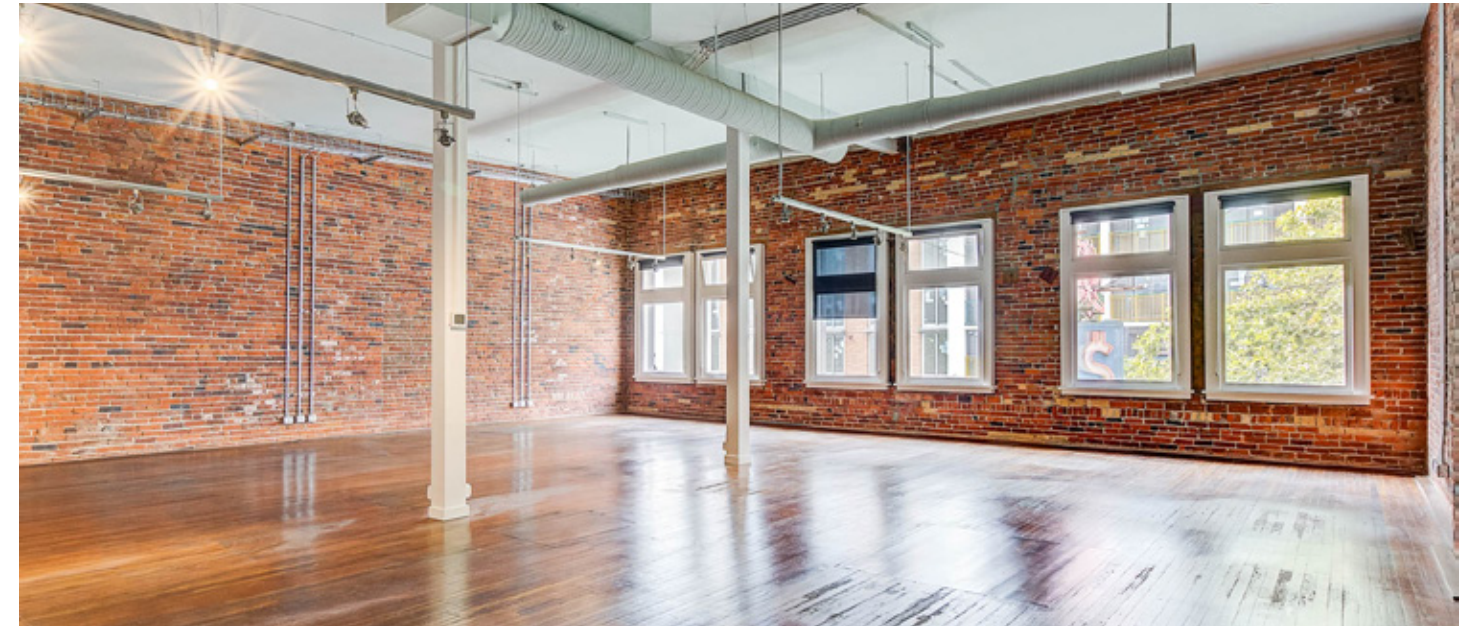
Contact Listing Agent

ADDITIONAL RENT

\$10.08 per square foot (2025 est.)

AVAILABLE

Immediately



43 West Hastings - Save on Meats Building
Vancouver, BC

About Anthem



Office Space | For Lease



Georgetown - Surrey, BC



The Junction - Mission, BC

9M sq ft of Commercial
8,500 acres of land
20,000 homes

Founded in 1991, Anthem is a team of 500 people driven by creativity, passion and direct communication. Anthem has invested in, developed or managed – alone or in partnership – more than 320 residential, commercial and retail projects across western North America.

Our growing residential portfolio includes 20,500 homes that are complete, in design or under construction, from master planned mixed use residential and multifamily, to townhome, rental and single family communities.

We own, co-own, manage or have previously owned over 9 million square feet of retail, industrial, and office space. We have developed more than 60 communities across 8,500 acres of land in Alberta, British Columbia and California.

Anthem is a real estate development, investment and management company that strives, solves and evolves to create better spaces and stronger communities.

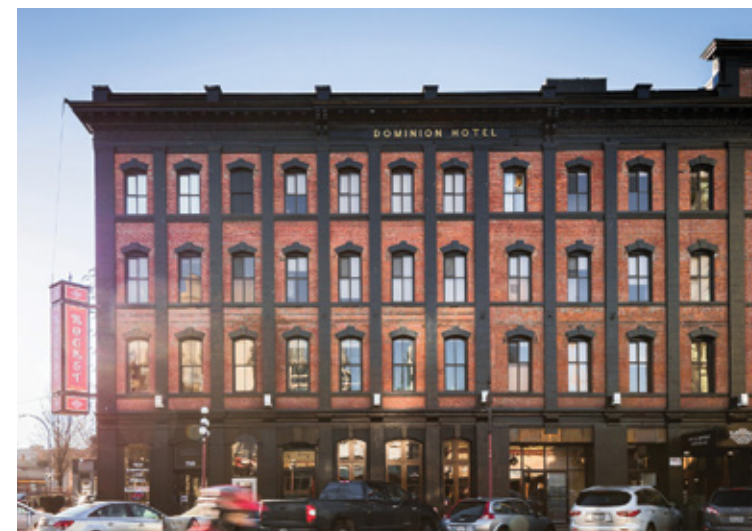
We are Growing Places.



Wynwood Green - Coquitlam, BC



Marine + Fell - North Vancouver, BC



Dominion Rocket - Victoria, BC



Queensborough - New Westminister, BC



Contact Agent

Brayden Sangha
Personal Real Estate Corporation
CBRE Limited | Office Leasing & Sales
brayden.sangha@cbre.com
604 329 8882

Proudly owned and operated by



CBRE Limited
1021 West Hastings Street #2500 | Vancouver, BC
www.cbre.ca

This disclaimer shall apply to CBRE Limited, Real Estate Brokerage, and to all other divisions of the Corporation; to include all employees and independent contractors ("CBRE"). The information set out herein, including, without limitation, any projections, images, opinions, assumptions and estimates obtained from third parties (the "Information") has not been verified by CBRE, and CBRE does not represent, warrant or guarantee the accuracy, correctness and completeness of the Information. CBRE does not accept or assume any responsibility or liability, direct or consequential, for the Information or the recipient's reliance upon the Information. The recipient of the Information should take such steps as the recipient may deem necessary to verify the Information prior to placing any reliance upon the Information. The Information may change and any property described in the Information may be withdrawn from the market at any time without notice or obligation to the recipient from CBRE. CBRE and the CBRE logo are the service marks of CBRE Limited and/or its affiliated or related companies in other countries. All other marks displayed on this document are the property of their respective owners. All Rights Reserved.

Mapping Sources: Canadian Mapping Services canadamapping@cbre.com; DMTI Spatial, Environics Analytics, Microsoft Bing, Google Earth.