

FOR SALE

118 ST MARY'S STREET

RALEIGH, NORTH CAROLINA 27605

BRIAN FARMER, SIOR
Managing Director, Principal
919.730.6584
bfarmer@lee-associates.com

100 Walnut Street | Cary, NC 27511 | 919.576.2500 | lee-associates.com/raleigh

 **LEE & ASSOCIATES**
COMMERCIAL REAL ESTATE SERVICES
RALEIGH • DURHAM • WILMINGTON

All information furnished regarding property for sale, rental or financing is from sources deemed reliable, but no warranty or representation is made to the accuracy thereof and same is submitted to errors, omissions, change of price, rental or other conditions prior to sale, lease or financing or withdrawal without notice. No liability of any kind is to be imposed on the broker herein.



OVERVIEW

Lee & Associates is pleased to present 118 St Mary's Street, a rare opportunity to acquire a well-maintained, freestanding office building in one of Raleigh's most desirable and accessible locations. Originally constructed in 1940 and extensively renovated in 2016, this two-story property offers an ideal environment for professional service firms seeking ownership in the urban core.

Located Inside the Beltline, the property provides convenient access to Downtown Raleigh, the Village District, and is immediately adjacent to the vibrant Glenwood South district, offering exceptional connectivity and nearby amenities.

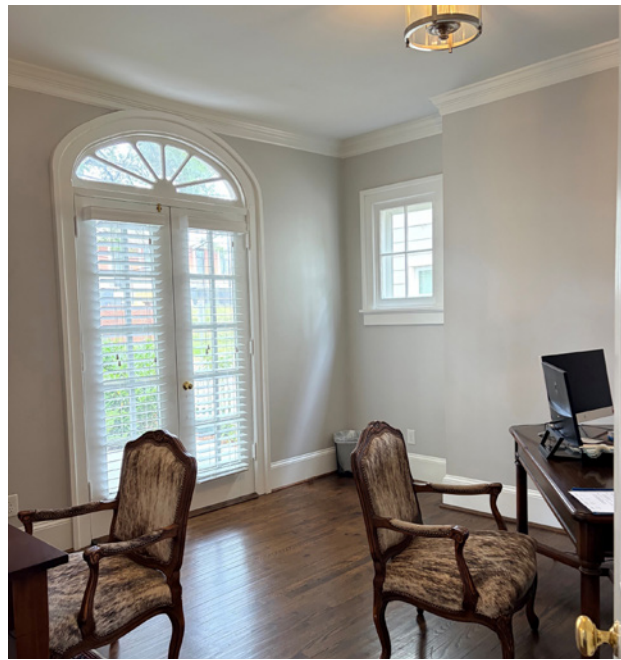
OWNERSHIP OPPORTUNITY

Freestanding office buildings of this size and quality within the Beltline rarely become available. This offering presents an exceptional opportunity for owner-users seeking a long-term office location in one of Raleigh's most sought-after business environments.

PROPERTY HIGHLIGHTS

- » ±3,546 SF on two stories
- » Freestanding, inside-Beltline office building
- » 0.2 acre site
- » Seven parking spaces
- » Prime Glenwood South location
- » Basement storage
- » New roof in 2024
- » Walk score of 70
- » Building to be delivered vacant at closing
- » Seller willing to consider a short-term leaseback arrangement
- » Sale Price: \$2,300,000

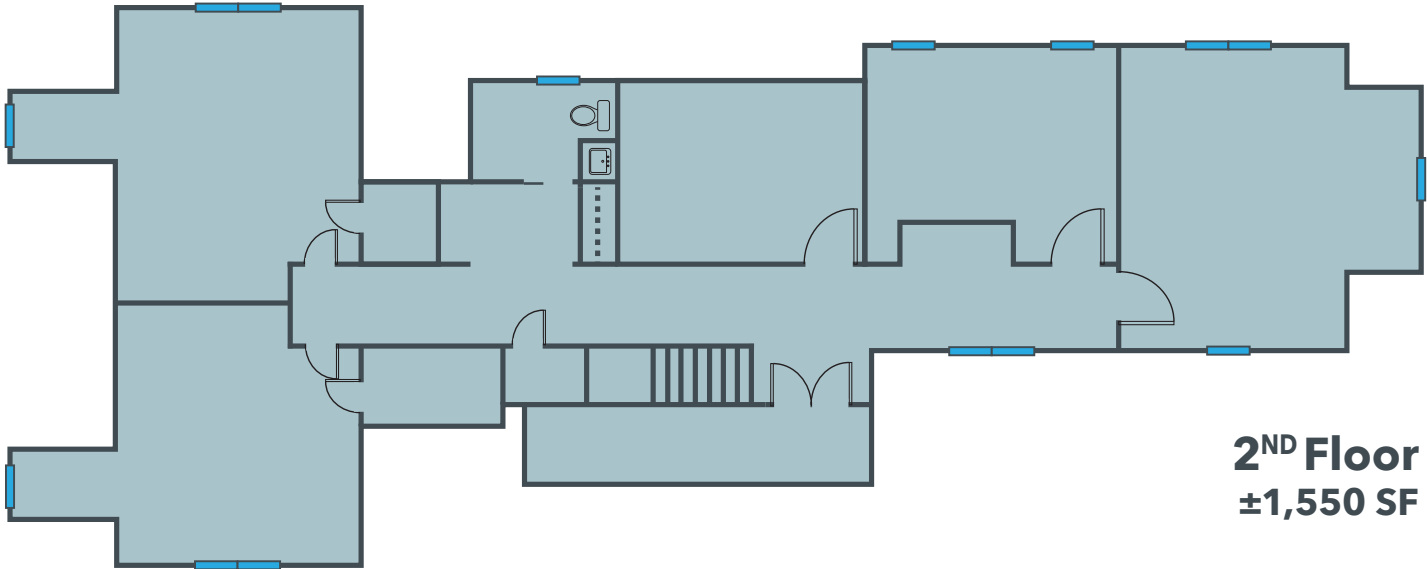
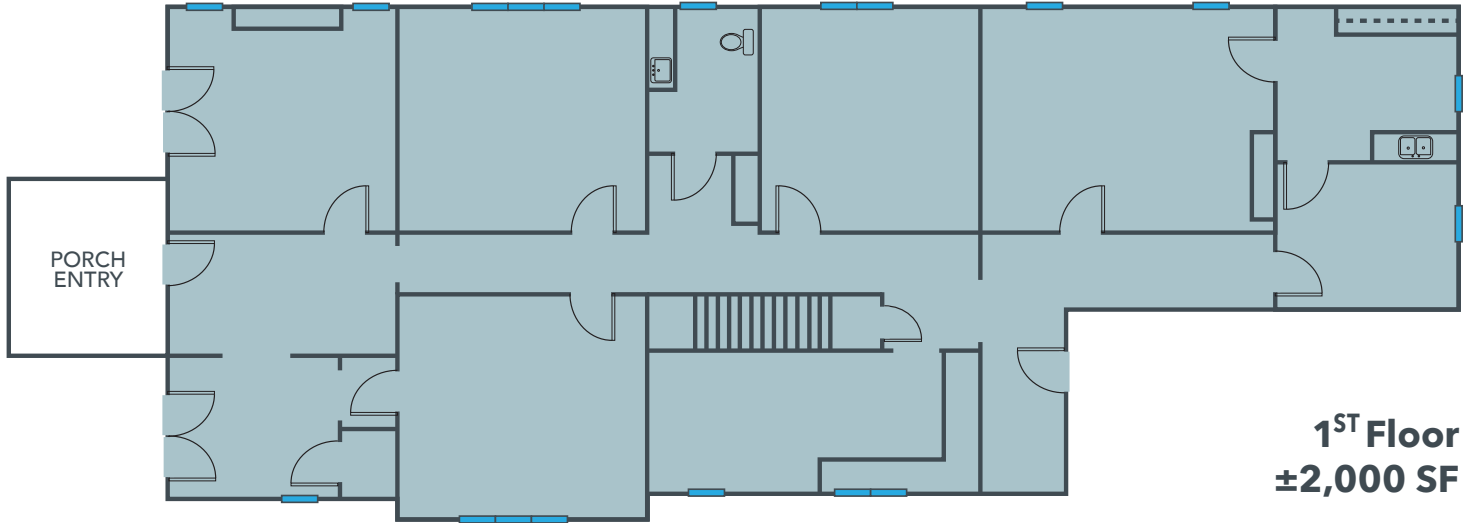
118 ST MARY'S STREET



IDEAL FOR

- » Law Firms
- » Accounting Firms
- » Engineering Companies
- » Financial Services
- » Consulting Groups
- » Other Professional Service Users

FLOOR PLANS



AREA AMENITIES



RALEIGH, NORTH CAROLINA

Raleigh is one of the most highly sought-after cities in the U.S. and on the list of some of the world's biggest businesses and most educated professionals. As North Carolina's capital city, Raleigh is a dynamic economic hub driven by explosive population growth, a diverse talent pipeline, an exceptional quality of life, and a low cost of doing business. Raleigh ranks as a top place for business with recruitment and expansion announcements by corporate headquarters, technology, and life science companies.

Major Employers



Tier-One Research Universities



THE UNIVERSITY
of NORTH CAROLINA
at CHAPEL HILL



DEMOGRAPHICS



	1 Mile	3 Miles	5 Miles
Population (2025)	12,849	91,469	194,048
2030 Projected Population	25,074	117,082	250,322
Daytime Population	61,953	153,964	361,838
Median Age	32.1	31.6	33.0
Avg. Household Income	\$143,597	\$138,956	\$127,064
Median Home Value	\$600,135	\$524,061	\$478,808

20K

RESIDENTS WITHIN 1 MILE OF DOWNTOWN RALEIGH

43.3K

EMPLOYEES WITHIN 1 MILE OF DOWNTOWN RALEIGH

132+

RETAILERS

289+

RESTAURANTS & BARS

21.3M

VISITOR VISITS PER YEAR

492

ACRES OF PARK SPACE WITHIN 1 MILE OF DOWNTOWN RALEIGH



BRIAN FARMER, SIOR
Managing Director, Principal
919.730.6584
bfarmer@lee-associates.com



**LEE &
ASSOCIATES**

COMMERCIAL REAL ESTATE SERVICES
RALEIGH • DURHAM • WILMINGTON

100 Walnut Street | Cary, NC 27511 | 919.576.2500 | lee-associates.com/raleigh

All information furnished regarding property for sale, rental or financing is from sources deemed reliable, but no warranty or representation is made to the accuracy thereof and same is submitted to errors, omissions, change of price, rental or other conditions prior to sale, lease or financing or withdrawal without notice. No liability of any kind is to be imposed on the broker herein.